



KEY LOCK & LANTERN NEWS



Jan/Feb 2013

Issue No.19

Key, Lock & Lantern Convention to be Held on April 20th

The 41st annual Key, Lock & Lantern Convention will be held on April 19 & 20, 2013, at the traditional location of the Albany/Glenmont Comfort Inn, just outside of Albany, New York. As in previous years, a “members only” gathering will be held on Friday evening, along with the KL&L Board of Trustees meeting. On Saturday, all railroad history buffs and collectors are invited to attend the displays, auction, swap meet, and KL&L general meeting, from 10am to 2pm.

Unlike the big hobby shows, the annual KL&L Convention is a smaller gathering of serious railroad historians and railroadians collectors, with the exhibits focused solely on authentic railroad memorabilia. KL&L members typically



Railroadians collectors and history buffs are invited to make the trip to Albany, NY for the KL&L Convention.



Railroad exhibits at the Key, Lock & Lantern Convention include a variety of hardware, timetables & memorabilia.

display unusual artifacts from their collections, and offer a variety of railroadians for sale or trade in the swap meet. The annual railroadians fund raising auction at the convention is always an entertaining event, with all proceeds supporting the activities of Key, Lock & Lantern.

At the 2012 convention, the “Best of Show” award went to John Stewart, for his excellent display of lanterns, hardware, and historical information about the Lake Shore & Michigan

Southern Railway. Other exhibits included a group of New York, Lake Erie & Western lanterns by the Steam Gauge & Lantern Company with different colored globes, a collection of horse car photos and memorabilia, and a large assortment of locomotive builders plates. Similar displays are expected at this year’s event.

In addition to the many museum-quality exhibits, there is always plenty of railroadians available for sale or trade at the swap meet. At the 2012 convention, several members

Continued on Page 10



Registered KL&L members get a head start at the early trading session during the convention set-up hour.

Register Early for KL&L Convention

As I'm putting the finishing touches on this edition of the *Key Lock & Lantern News*, my feet are still sore from last weekend's big railroad show in West Springfield, Ma. (see report on page 9). With exhibitors filling four buildings and covering over eight acres, the Springfield show is the "big event" for railroad hobbyists in the northeast. It always takes me two full days to see the literally hundreds of tables of models, books, and other related products, and still have time to visit with people. For railroadiana collectors, there were between 15 and 20 dealers of authentic memorabilia exhibiting this year.

Another event that includes almost two dozen exhibitors of railroad memorabilia, but is a little easier on the feet, is the annual Key, Lock & Lantern Convention in Albany, NY. All of the display and sales tables are focused solely on authentic railroadiana, conveniently set up in one room. It is easy to see everything and still have time to visit with fellow collectors and railroad enthusiasts. This combination of displays of the "good stuff" and a relaxed atmosphere is what makes the KL&L Convention so enjoyable.

All railroadiana collectors and history buffs are invited to join us for this year's convention, to be held over the weekend of April 20th. Current members may register in advance for a display/sales table, or discounted admission to all activities. Please send in your registration form early. Last year, we were able to add a second exhibit room, but sufficient advance notice is needed in order to reserve it. Don't miss out on getting a table; send your form in today.

As in past years, a railroad slide program will once again be held, following the close of the official activities on Saturday. There are also plenty of good railfanning locations and antique shops in the Albany area, for those who plan to stay for the weekend. The KL&L Convention is always a great event, and I hope to see you there!

Dave Hamilton

KL&L President & Editor

Visit Key, Lock & Lantern Online:
www.klnl.org



For Current News
"Like" KL&L on

facebook

KL&L News is published bi-monthly for the members of Key, Lock & Lantern, a non-profit organization dedicated to the preservation of railroad history & memorabilia.

Recipients may repost or forward this newsletter to other hobbyists, but its content may not otherwise be copied or distributed without the permission of the KL&L Board of Trustees. Copyrights are held by the respective authors and photographers. Excerpts of news items may be published with the credit line "Key, Lock & Lantern News"

E-mail editor Dave Hamilton at transportsim@aol.com

Railroadiana Show & Auction Calendar



- Feb 10 Buena Park, CA** - California Express Railroadiana Show. UFCW Hall 8550.
Info: www.californiaexpress.net.
- Feb 16-17 Buffalo, NY** - Winter Train & Toy Show. Erie County Fairgrounds Event Center.
Info: www.wnyrhs.com.
- Feb 16-17 Clifton Forge, VA** - George Washington Train Show. Clifton Forge Armory.
Info: www.cohs.org.
- Feb 16 Jacksonville, FL** - Jacksonville Rail Fair. Prime Osborn Convention Center.
Info: www.gserr.com.
- Feb 23-24 Allentown, PA** - Spring Thaw Train Show. Allentown Fairgrounds Ag Hall.
Info: www.allentowntrainmeet.com.
- Feb 23 Orange Park, FL** - Railroadiana Auction. Lions Club. Sunshine Auctions.
Info: www.auctionzip.com.
- Mar 2 Phoenixville, PA** - Railroadiana Auction. Maurer Auctions - Ridge Fire Hall.
Info: www.maurerail.com.
- Mar 3 Clark, NJ** - Jersey Central NRHS Train Show. Mother Seton High School.
Info: www.jcrhs.org.
- Mar 9 Stockton, CA** - Winterail 2013. Scottish Rite Masonic Center.
Info: www.winterail.com.
- Mar 10 Taylor, MI** - Railroad Memorabilia & Model Train Show. Taylor Town Trade Center.
Info: www.bluewaternrhs.com.
- Mar 16 Steelton, PA** - Harrisburg Railroad Show & Collectors Market. IW Abel Union Hall.
Info: www.harristower.org.
- Mar 24 Kingston, NY** - Railroad Hobby Show. Murphy Midtown Center.
Info: www.kingstontrainshow.com.
- Mar 30 Joplin, MO** - Joplin Museum Train Show. Joplin Museum Complex.
Info: www.tristatamodelrailroaders.com.

Continued on Page 14

Large and Varied Two-Day Railroadiana Auction

Saturday, April 6th, 10 a.m. and Sunday, April 7th, 10 a.m.

Held inside DSA Gallery located 30 miles east of Kansas City, Mo. on the north side of U.S. Hwy 50 at the western edge of Lone Jack, Mo. Address: 529 W. Lone Jack-Lee's Summit Rd., Lone Jack, Missouri 64070

An exceptional one-owner collection of 19th and 20th Century items including:

- Hardware
- Collectibles
- Advertising
- Silver
- Stoneware
- Lanterns
- Pairs of Switch Lights
- Headlights
- Locomotive Bells
- Whistles
- Step Stools
- Fixtures and Furnishings
- Depot Fixtures and Furniture
- Depot Signs, Schedules and Clocks
- Large Signals, Towers and Crossing Signs
- A Collection of American Flyer and Lionel Post-war Toy Trains and Accessories
- Still More!

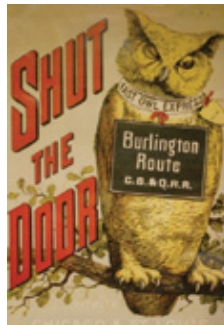


Fancy Eastlake Style Walnut Brochure Cabinet

Everything here is very clean and nice and in very good condition.



One of Six Different



Circa 1880s



Unique Fixtures, Whistles, Etc.



Headlights, some with provenance



Double Marked Brass Top C.M. and StPL



Depot Fixtures, Clocks and Signs



Extra Clean Mint



Good Signs

Visit www.DirkSoulisAuctions.com for more details and a complete online catalog. Or call for an illustrated print catalog. Five ways to bid!

DirkSoulis AUCTIONS
Fine Art and Antiques

816.697.3830 | 1.800.252.1501 | www.DirkSoulisAuctions.com

Online Format Popular With Railroad Memories Bidders

Railroad Memories Auction #85 closed on January 6, 2013, and in what is certainly a sign of the times, most bidders opted to utilize the new online bidding system. Introduced with the previous sale, the new format allows customers to view and update bids in real time, much like other internet auction services. Mail and phone bids are still accepted and



A Camas Prairie Railroad "Special Deputy Sheriff" badge featuring the State of Idaho seal sold for \$550.

executed by Railroad Memories, but the catalog subscription program is set to change this year, due to the popularity of the online bidding system and increases in printing costs.

Once current subscriptions expire, auction catalogs will be available on an individual basis for \$20 each. Customers will have the option of purchasing a catalog for each auction, or simply using the online bidding system. This plan will allow



A bid of \$6500 took home this Virginia & Truckee beehive lantern by William Westlake. Excellent condition and a red etched "V&T RR" globe added to this example's rarity.

other western lines was the star of the show, but eastern collectors also had some big ticket items to bid on. Whether using the mail or the internet, many bidders acquired some nice examples of railroading for their collections. *All photos, descriptions, and prices realized are courtesy of Railroad Memories auction service. Prices do not include buyers premiums or shipping costs.*

Continued on Page 11



A nicely restored Alco Schenectady Works builders plate from Northern Pacific Railroad 2-8-2 steam locomotive Number 1857 brought in a \$550 high bid.

those who prefer the printed catalog to continue to receive it, while eliminating the cost for those who do not want it. A buyers premium (which was formerly waived as part of the subscription service) will now be applied to all purchases.

Auction #85 contained plenty of interesting railroading, much of which attracted high bids. A variety of lots were offered, with hardware, china, and paper from many different railroads. As usual, scarce memorabilia from Colorado and



A less common occupation of "Station Master" on this Delaware & Hudson Railway cap badge by Bastien no doubt contributed to its \$275 sale price.

Railroadiana Auction - **Saturday, April 13, 2013**

Brookline Auction Gallery LLC - Ronald Pelletier, NH License #2177

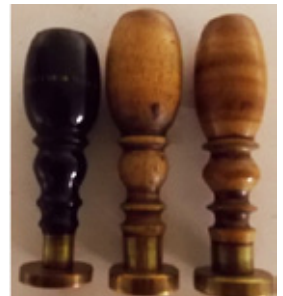
32 Proctor Hill Road - (Route 130) Brookline, NH 03033

Free online catalog in March, 2013 – Gallery of photos: www.tagtown.net

Scott Czaja - Sales Manager (978) 779-2904

an auction by a collector for collectors – no reserves

**Wonderful Presentation Lantern Collection
William Young Collection – 1000s of Timetables
New England – Wax Sealers, Dining Car, more**



We accept absentee bids via: email, mail, phone - Free online catalog
Consignments are welcome for future sales – competitive rates - call Scott or email: sczaja@hotmail.com

KCS Celebrates 125th Anniversary by Ringing the Opening Bell at the New York Stock Exchange

Kansas City Southern celebrated its 125th anniversary of railroad operations on November 27, 2012, by ringing the opening bell at the New York Stock Exchange. The company known today as KCS was founded by Arthur E. Stilwell in 1887. Stilwell envisioned a single-line railroad from the heartland of the United States to the Gulf of Mexico.

Building off of this vision to develop a north-south railroad, KCS extended its network into Mexico in 1997 by joining with Transportación Ferroviaria Mexicana, S.A. de C.V. (TFM) to operate the Northeast Railway, Mexico's premier



Read about Arthur Stilwell's Kansas City, Mexico & Orient Railroad in KL&L News Issue #14

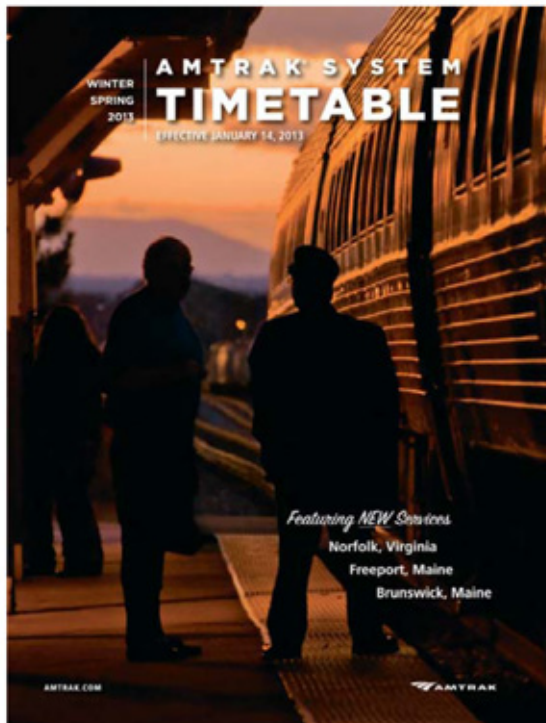
rail line. In 2005, KCS acquired full ownership of TFM and renamed its Mexico operations Kansas City Southern de México, S.A. de C.V. This acquisition resulted in the first and only coordinated rail network between the United States and Mexico.

"The ringing of the opening bell of trading on the New York Stock Exchange is for us a celebration of the contributions of generations of dedicated KCS employees," commented KCS Executive Chairman Michael R. Haverty. "Our founder, Arthur Stilwell, had a unique vision; a vision, if anything, more vibrant today than it was 125 years ago."

Headquartered in Kansas City, MO, Kansas City Southern is now a transportation holding company that has railroad investments in the U.S., Mexico and Panama. Its primary

U.S. holding is The Kansas City Southern Railway Company. Its international holdings include Kansas City Southern de México, S.A. de C.V., and a 50% interest in Panama Canal Railway Company, providing ocean-to-ocean freight and passenger service along the Panama Canal. Kansas City Southern's North American rail holdings and strategic alliances are primary components of a NAFTA Railway system, linking the commercial and industrial centers of the U.S., Mexico and Canada. *(News & Photo Courtesy of Kansas City Southern).*

Amtrak Winter-Spring Timetable Now Available



WASHINGTON – The new winter-spring Amtrak System Timetable, effective with departures beginning Monday, January 14, 2013, is now available and includes schedules on several new service additions.

Major updates include the recently launched services including the Amtrak Virginia Northeast Regional service to Norfolk, Va., the extension of Downeaster service to Freeport and Brunswick, Maine, and the new Amtrak Thruway bus service in Eastern North Carolina. In addition, Amtrak recently announced the addition of a new weekday Acela Express round-trip between New York and Washington, D.C. beginning on January 28th. Most other timetable changes are minor or seasonal in nature.

The winter-spring timetable cover features a conductor greeting passengers boarding a Northeast Regional train at sunrise at the historic Manassas, Va. station. The magazine-style booklet, printed bi-annually, is available in stations and can be ordered and viewed online at Amtrak.com. In addition, passengers can get Amtrak schedule information by calling 800-USA-RAIL or on the Amtrak iPhone and Android apps. *(News & Photo Courtesy of Amtrak).*

**SUNSHINE AUCTIONS PRESENTS
A VERY SPECIAL
RAILROAD MEMORABILIA AUCTION**

SATURDAY FEBRUARY 23, 2013

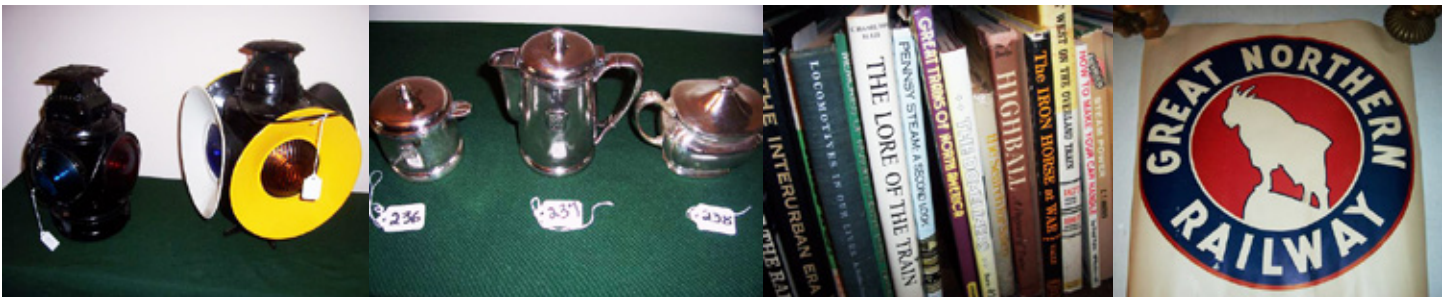
PREVIEW: 10:00 AM, AUCTION STARTS AT 2:00 PM SHARP

ORANGE PARK LIONS CLUB

423 MCINTOSH AVE, ORANGE PARK, FLORIDA 32073



THIS AUCTION WILL CONTAIN THE ENTIRE CONTENTS OF A FIFTY YEAR PRIVATE COLLECTION. OVER 600 LOTS OF VERY RARE PIECES. MORE THAN 100 LANTERNS, BRASS ITEMS, SWITCH LOCKS, RARE KEYS, PAPER ITEMS, TIMETABLES, CALENDERS, BOOKS & MANUALS, ADVERTISING, SIGNS, CHINA, SILVER PLATE, GLASSWARE, OIL AND WATER CANS AND MUCH, MUCH MORE. RESERVED SEATS ARE HIGHLY RECOMMENDED FOR THIS SALE. FOR SEATS TEXT 904-868-6774 WITH NUMBER OF SEATS AND LAST NAME.



**SEE OVER 300 PICTURES & INVENTORY AT AUCTIONZIP.COM
AUCTIONEER ID# 26277**

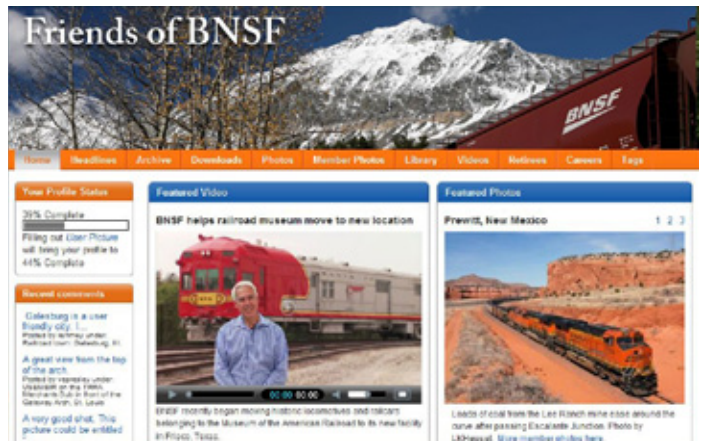


TERMS & CONDITIONS: CASH, VISA, M/C, DISCOVER, NO CHECKS. 7% FL SALES TAX OR CURRENT RESALE CERT. 10% BUYERS PREMIUM. ALL ITEMS MUST BE PICKED UP DAY OF SALE. ALL ITEMS SOLD AS IS WHERE IS. NO WARRANTIES OF ANY KIND. CONDUCTED BY SUNSHINE AUCTIONS AU2736 AB 2790 PHONE: (904) 868-6774

Friends of BNSF

Over the last several years, many railroads have begun to recognize the significance of their heritage, with the introduction of classic locomotive paint schemes, traveling display cars, and celebrations of milestones in their history. Most corporate web sites now include sections that are geared toward railroad enthusiasts and historians, or at least provide a background of the company's history. In the last issue of the *KL&L News*, we reviewed the digital book and web site that was recently created by the Union Pacific in celebration of its 150th Anniversary.

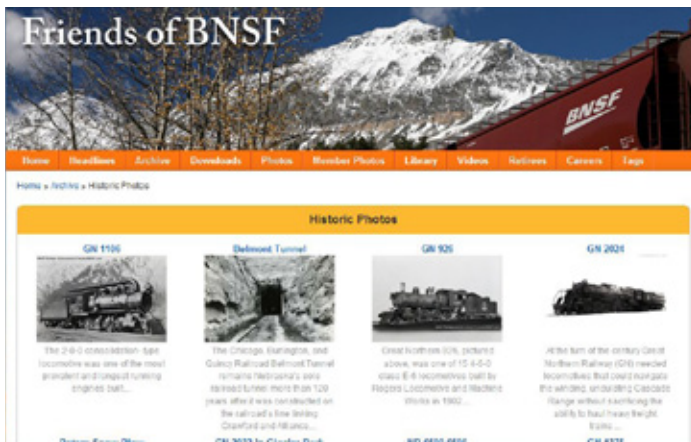
Not needing to wait for a special occasion, the Burlington Northern Santa Fe recently launched a web site dedicated to railroad fans who have an interest in the company. The "Friends of BNSF" internet site contains current and



The Burlington Northern Santa Fe has launched a "Friends of BNSF" web site for railroad enthusiasts and historians.

a map of the railroad. Hopefully, additional material will be added to this section in the near future. One item that will be of interest to railroad historians and collectors is an electronic version of *Leaders Count*, a corporate history commissioned by the railroad. The book is being posted on the site in PDF format, one chapter at a time. Having access to this book is alone worth joining the site, for anyone conducting railroad research.

Current issues of the railroad's company newsletter are also posted, along with a variety of feature articles about modern railroad operations. This type of content often only appears on "employee only" web sites, so it is a nice change of pace to be able to view it. It is also nice to see information about



The "Friends of BNSF" web site contains several galleries of modern and historical photos of the railroad.

historical photos of the railroad's operations, a members photo gallery, feature articles about the line, and a small library of material to download. It also provides information about jobs at BNSF, and resources for BNSF retirees.

Access to the site requires the user to register a screen name and password, and provide a small amount of information. While it seems unusual to have to "join" a web site of this nature, the BNSF probably requires it in order to prevent the posting of spam in the photo galleries and comment sections. With dozens of pictures provided by members (including many older views), registration is only a minor inconvenience, that is worthwhile in order to enjoy these features.

The BNSF has also included an "official" photo gallery, with a variety of modern and historical images. There are also videos on the site, including some from a number of years ago. While there isn't a particularly large quantity of material, there is a nice selection of images of locomotives and views from along the line.

The collection in the "BNSF Library" primarily consists of a few marketing and information brochures, fact sheets, and



The "BNSF Library" section of the web site offers brochures and a digital book about the history of the BNSF railroad.

jobs included on a web site for railroad enthusiasts. Perhaps that is a sign that railroads (at least the BNSF, anyway) are getting over their reluctance to hire railfans.

Overall, the "Friends of BNSF" internet site is an excellent resource, that will hopefully continue to grow in the future. Anyone with an interest in either railroad history or modern operations will find it to be worthwhile to set up a free user account. In a few minutes, you'll have a virtual library of BNSF photos and material at your fingertips.

Another Record Year for Amherst Railway Society Show

The weather in New England is typically cold in January, but visitors to this year's Amherst Railway Society Railroad Hobby Show probably felt like they were walking across the arctic tundra instead of the Eastern States Expo grounds. Despite frigid weather, over 25,000 people made the trip to West Springfield, Ma to attend the annual "big event" for eastern railroad hobbyists.

Held over the weekend of January 26th & 27th, additional space was added in the fourth building this year, increasing the size of the show to slightly over eight acres of exhibitors. From national model manufacturers to local railroadians



Museums and tourist lines, such as the Berkshire Scenic Railway Museum, promoted their projects at the show.

collectors, there is always a little of everything at this event. While the show has always been geared toward model railroading, there have been more dealers of memorabilia attending in recent years. A variety of railroad museums and tourist lines also exhibit at the show, promoting their projects and recruiting new volunteers.

Overall, there was an excellent mix of dealers and exhibitors this year, representing every segment of the railroad hobby. Folk music from "The Electric Trains" filled one building, while a former Ringling Brothers clown entertained younger visitors in another. There were plenty of activities for kids,



A visitor to the Penn Central Historical Society's booth checks out some of the books and memorabilia for sale.

from a hands-on model train section to rides on the "Roaming Railroad." Introducing the excitement of the hobby to new participants has always been an important goal of the event sponsors, and the Springfield show certainly succeeds at it.

The Amherst Railway Society is a non-profit organization with about 450 members who share an interest in the many aspects of the railroad hobby. Proceeds from the show not only support the activities of the organization, but are also donated to other railroad preservation projects. The Fall



Several new dealers of railroadians have set up tables at the Amherst Railway Society show in recent years.

River & Old Colony Railroad Museum, the Boston & Maine Historical Society, and the Flying Yankee train restoration are among the many projects that have received funding.

Next year's show is scheduled for January 25 & 26, 2014, at the same location. With such a successful event this year, we can expect an even bigger and better show in 2014!

KEY LOCK & LANTERN

Can Help Promote Your Auction, Show or Event

Contact Dave Hamilton at transportsim@aol.com



For Additional Photos, Visit the KL&L Page on Facebook. Use the link at www.klnl.org.

brought spare globes and parts, while others offered dining car china, keys, and timetables. In addition to the swap meet, the convention provides educational and networking opportunities for collectors, with plenty of time available for participants to discuss recent finds and historical research.

Following the official convention activities, a railroad slide and movie program is once again planned for Saturday afternoon and evening. Last year, presentations ranged from original movies shot by George Cook in the 1960's, to a "last days of Kodachrome" slide show by William Sternitzke.



There is plenty of time for collectors to share new finds and discuss railroad history at the annual KL&L Convention.

Those who stayed late were treated to some excellent slides of the Erie Lackawanna taken by Lyman Gray, and Bill Moll's presentation about the New York, Susquehanna & Western Railway.

For fans of modern railroads, the Albany-Rensselaer Amtrak station, the Port of Albany, and CSX Selkirk Yard are all located within a ten minute drive from the hotel. There are many other popular railfanning and antique hunting



Experienced collectors are always willing to share their knowledge at the Key, Lock & Lantern Convention.



A good selection of railroadiana for sale or trade is always offered at the KL&L Convention Swap Meet on Saturday.

locations in the area, making the convention well suited for a weekend trip. The Sunday schedule is open to allow convention participants to explore the area on their own.

Convention registration forms have been mailed to current Key, Lock & Lantern members, or they may be downloaded at www.klnl.org. A tentative schedule has also been posted on the KL&L web site, and will be updated as the convention date approaches. All collectors and railroad enthusiasts are invited to attend the events on Saturday, with a \$7 registration fee at the door. Current year (2012-2013) KL&L members can choose from several advance registration options for discounted admission and exhibit table space. Early registration is highly recommended, as all tables were sold out last year.

The Key, Lock & Lantern Convention has been a tradition in the railroadiana collecting hobby for over forty years. Make plans today to join your fellow collectors and railroad historians for what promises to be an enjoyable weekend!

KL&L Membership Meeting Scheduled

The annual membership meeting of Key, Lock & Lantern will be held on Saturday, April 20, 2013, in conjunction with the KL&L convention. In accordance with the bylaws, nominations for the "Trustee at Large" position must be submitted sixty days prior to the meeting, and nominations for any officer position must be submitted at least 30 days prior to the meeting.

Please send nominations directly to KL&L president David Hamilton by e-mail at transportsim@aol.com, and they will be submitted to the secretary for inclusion on the ballot. Any new business for the consideration of the KL&L Board of Trustees should also be submitted in writing to David Hamilton, and will be presented at the board meeting on April 19, 2013. Copies of the KL&L bylaws and various reports are available to current KL&L members upon request.



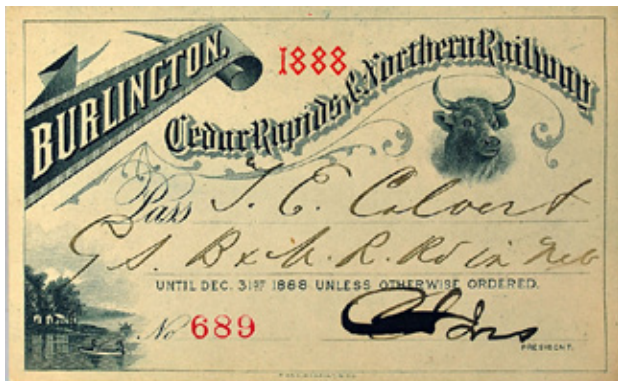
Although in less than perfect condition, this American Railway Express call sign was not a bad deal at \$120.



Although this New York, Ontario & Western Railway Adlake Reliable lantern had a few condition issues, a green cast NYO&W 6" globe made it worth \$1700 to the high bidder.



A high bid of \$275 took home this mint condition 1937 Pullman Indian Tree demitasse set by Syracuse China.



One of several passes in the sale, this 1888 example from the Burlington, Cedar Rapids & Northern sold for \$230.



Delaware & Hudson collectors had several lots to bid on, with this six lever lock bringing a high bid of \$325

Continued on Page 12



A Western Electric scissors phone complete with desk mount and headset sold for a high bid of \$250.



Made by Onondaga Pottery Company of Syracuse, this Atchison Topeka & Santa Fe Railroad Mimbreno pattern sugar bowl in near mint condition sold for a bid of \$1800.



Some of the dozens of keys sold in the auction: Chicago Milwaukee & Puget sound RR, \$375; Rio Grande Southern Railroad, \$7500; Saint Louis Alton & Terre Haute RR, \$400.



A high bid of \$2100 was no surprise, given the rarity of this Rio Grande Southern Railroad "Conductor" cap badge, made by the Denver Novelty Works & Manufacturing Co.



A few more of the scarce keys sold: Colorado & Southern Railway, \$550; New York, Chicago & St. Louis Railroad (Nickel Plate), \$150; Illinois Central Railroad, \$220.



A bid of \$500 was needed to acquire this cast iron journal box cover marked "1878" by the Central Pacific Railroad

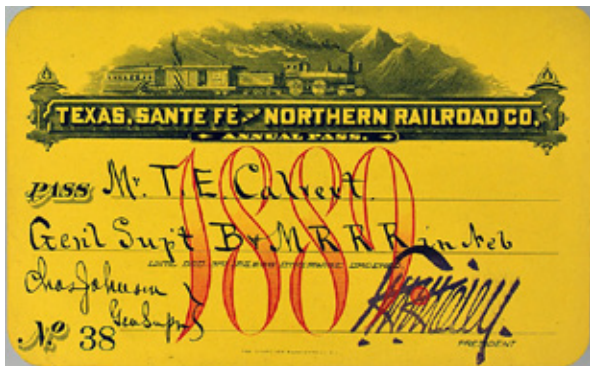
Continued on Page 13



A silver coffee pot by Rogers Brothers marked for the Duluth & Iron Range Railway brought a high bid of \$800.



A bid of \$700 was needed to take home this 14x20 inch porcelain United States Express Company sign.



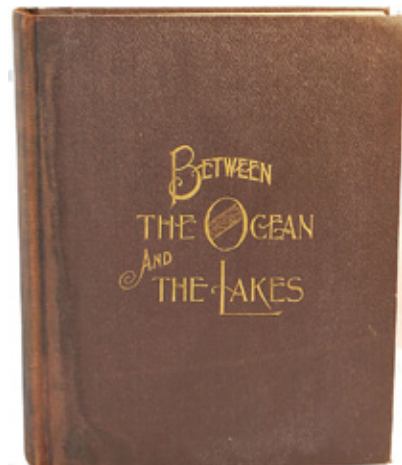
This Texas, Santa Fe & Northern RR pass with an ornate vignette attracted some interest, selling for \$3000.



A New York, New Haven & Hartford Railroad car lock and key set went to a new home for a high bid of \$90.



A \$325 bid took home this Milwaukee Road police badge, in its original leather ID wallet, used by CMSTP&P Railroad special agent Harlan Lucas in Harlowton, Montana.



Despite the recent proliferation of e-books, collectible print editions are still popular. This leather bound first edition of *Between the Ocean and the Lakes* by Mott brought \$150.

Railroadiana Show & Auction Calendar

Continued from Page 2

- Apr 6 -7 Lone Jack, MO** - Railroadiana Auction. Dirk Soulis Auction Gallery.
Info: www.dirksoulisauctions.com.
- Apr 6 Pine Bluff, AR** - Arkansas Railroad Museum Railroadiana Show & Sale.
Info: www.arkansasrailroadmuseum.org.
- Apr 7 Batavia, NY** - Great Batavia Train Show. Batavia Downs Casino & Racetrack.
Info: www.gsme.org.
- Apr 13 Brookline, NH** - Railroadiana Consignment Auction. Brookline Auction Gallery.
Info: www.tagtown.net.
- Apr 13 DeLand, FL** - Florida Rail Fair. Volusia County Fairgrounds.
Info: www.gserr.com.
- Apr 19-20 Albany, NY** - 41st Annual Key Lock & Lantern Convention. Glenmont Comfort Inn.
Info: www.klnl.org.
- Apr 20-21 Calgary, AB** - Super Train Railroad Show. Subway Soccer Center.
Info: www.supertrain.ca.
- Apr 20 Columbus, OH** - Buckeye Railroadiana Show. Ohio Expo Center.
Info: www.gserr.com.
- Apr 20-21 Randolph, MN** - Railroad Days. Randolph School, Rail Yard & Museum.
Info: RandolphMNHHistory@yahoo.com.
- Apr 27-28 San Bernardino, CA** - Railroad Days Train Show. Old Santa Fe Depot.
Info: www.sbdepotmuseum.com.
- May 4-5 Ottawa, ON** - Ottawa Train Expo. Carleton University Fieldhouse.
Info: www.ottawatrainingexpo.com.
- May 11-12 New York, NY** - Parade of Trains & Railroad Show. Grand Central Terminal.
Info: www.mta.info/gct/.
- May 17-19 Durand, MI** - Durand Railroad Days. Various locations around town.
Info: www.durandrailroaddays.com.
- May 18 Albuquerque, NM** - Albuquerque Rail Fair. New Mexico State Fairgrounds.
Info: www.gserr.com.
- May 18 Chester, MA** - Chester On Track Festival Train Show. Chester Railway Museum
Info: <http://chesterrailwaystation.net>.
- Jun 9 St. Charles, IL** - Kane County Railroadiana Show. Kane County Fairgrounds.
Info: www.kanecountyrrshow.com.
- Jun 22 Charlotte, NC** - North Carolina Railroad Show. Metrolina Expo Trade Center.
Info: www.gserr.com.
- Jul 13 DeLand, FL** - Florida Rail Fair. Volusia County Fairgrounds.
Info: www.gserr.com.
- Jul 19-20 Lancaster, PA** - Lancaster Lock Show. Host Resort & Convention Center.
Info: www.lancasterlockshow.com.
- Aug 10 Atlanta, GA** - Atlanta Railroad Show. North Atlanta Trade Center. Norcross, GA.
Info: www.gserr.com.
- Aug 10 Lynchburg, VA** - Lynchburg Rail Day. Boonsboro Ruritan Club.
Info: www.blueridgenrhs.org.
- Aug 18 Niles, OH** - Northeastern Ohio Railroad Show. McMenemy's Banquet Center.
Info: www.gserr.com.
- Sep 7-8 Buffalo, NY** - Central Terminal Train Show. Buffalo Central Terminal.
Info: www.buffalocentralterminal.org.
- Sep 20-21 Cumberland, MD** - National Association of Timetable Collectors Convention.
Info: www.naotc.org.
- Oct 5 DeLand, FL** - Florida Rail Fair. Volusia County Fairgrounds.
Info: www.gserr.com.
- Oct 27 Indianapolis, IN** - Railroadiana Show. Ramada Inn East.
Info: www.indyrrshow.com.

Send show listings to: transportsim@aol.com
There is no charge for calendar listings. Train shows must include dealers of authentic railroad memorabilia, and auctions must include at least 20 lots of railroadiana to be included in the calendar. Events are listed space permitting, at the editor's discretion. Listings are subject to error or change. Please check show web sites before traveling.
Visit www.klnl.org For Updates

The New York-Pennsylvania

COLLECTOR

Living with Antiques, Art & Americana

A Monthly Publication Featuring News & Articles About Antique Collecting & History



Auction & Show Listings
Club Meetings & Events
Identification & Fakes
Antique Restoration Tips
Museums & Historic Sites
Dealer & Flea Market Ads

Subscription & Advertising Information:
1-800-518-0875 www.nypa-collector.com

WANT ADS & ANNOUNCEMENTS

Want Ads are FREE to Key Lock & Lantern members on a space available basis, in the KL&L Magazine and the KL&L News. E-mail to j944wb@aol.com or mail to: John & Marie Brainard, 35 Nordhoff Place, Englewood, NJ 07631

For Sale

For Sale: *Railroadiana II: The Official Price Guide for the Year 2011 and Beyond*. Softcover, \$65 + shipping. Railroad Memories. 303-759-1290. www.railroadmemories.com.

For Sale: Railroad Artifacts & Memorabilia: Everything from keys, locks & hardware to china, paper, and more. Jane Silvernail. Website: <http://timestreasures.rubylane.com> or contact by e-mail at timestreasures@sohotechnical.com.

For Sale: Switch Lamps, Markers & Parts. Website: JerrysRRStuff.com. Phone: 206-778-0386. E-mail: jerry@JerrysRRStuff.com.

For Sale: CB&Q RR Special Police badge and CB&Q RR Special Watchman badge. Will consider trade for other RR police badges. Dan Pottebaum. windsor5207@yahoo.com or call 712-274-8847.

For Sale: Keys, Locks, Lanterns, Ephemera, etc. Mostly NE including ME narrow gauge. Jerry Devos, PO Box 376, Towaco, NJ 07082. 862-222-5264. jdevos99@aol.com.

For Sale: Original steam, electric & diesel locomotive builders plates. Currently wide range of N&W diesel plates in stock. E-mail for current list: rjmuldowney@comcast.net or call Ron Muldowney at 609-397-0293.

For Sale: Old (1850's-1890's) New England railroad paper items. Lots of old name railroads, also Rutland, Central Vermont, Housatonic, Fitchburg, etc. Most in good to excellent condition. Contact Chuck Hall at 315-824-1674.

Wanted

Wanted: Vesta style globes marked "USRA", any color. John Stewart, 86 Bonnie Brae Ave, Rochester, NY, 14618-1802. (585) 704-8885. E-mail: rgvrr@s363.com.

Wanted: Tokens from North American electric & street railways, interurbans, elevated lines, trolleys lines, etc. One or a collection. Josh Linenbroker, 98 E. Market St #F9, Hyde Park, NY 12538.

Wanted: Switch keys from the L&HR, WVRR, SRR, NY&ERR. Stock Certificates: Wawayanda RR, Mine Hill RR, Pequest & Walkill RR, and Southfield Branch RR. Phil Simms, 8 Still Waters Drive, Campbell Hall, NY, 10916. Call 845-427-5051.

Wanted: Looking for small hardware items from the Northampton & Bath RR such as keys, badges, brass time/tool checks or any other significant small item. Have some interesting items to trade from US Steel roads. Contact Jeff Wolfe at lobowolf@aol.com.

Wanted: Memorabilia from the New York & Greenwood Lake Railway. Jerry Devos, PO Box 376, Towaco, NJ 07082. 862-222-5264. jdevos99@aol.com.

Wanted: Factory marked inspector lamps. Must be complete and in reasonably good condition. Marked globe a plus. Need RDG C&O B&O GCT SOURY (or S RY) Erie Acme model plus others I may not be aware of - Larry Davis, 5110 Hollywood Ave; Shreveport, LA 71109. 318-469-7825.

Wanted: Diesel builders plates, especially EL and other northeastern US railroads. Have plates to trade. E-mail: RBombel@aol.com.

Wanted: PRR Macbeth #220 pearl glass globes with straight letters 3/4" in height, "PRR" in rectangle. Need clear and red globes. Have traders or cash. Joel Shaw, 31 Sandle Drive, Fairport, NY 14450. Phone: 585-385-3776.

Wanted

Wanted: Keys, locks, lanterns, fly fishing leader boxes, passes, buttons & other from the Denver, South Park & Pacific Ry - Denver, Leadville & Gunnison Ry - Union Pacific Denver & Gulf - Colorado & Southern Ry. Leonard Walmsley, 11044 Claire Circle, Northglenn, CO, 80234. 303-429-8674.

Wanted: Photo of NY State Railways Syracuse Lines car #1024. Also any photos of Syracuse trolleys on Irving Ave and around Syracuse University. Also, globe for an SG&L Lake & River lantern, large 6x6 "government" style. Dave Hamilton. transportsim@aol.com. 518-439-8392.

Wanted: Switch key for the PCRY (Pacific Coast Railway), not PCRR (Penn Central), probably made by Fraim. Contact Steve Mott at 805-544-5339 or by e-mail at sjmott2359@sbcglobal.net.

Wanted: Brass burner for a Dressel double wire tall globe railroad lantern & twist off font with burner for a Dietz 39 Vulcan wire frame. Also buying Western Maryland locks, keys, lanterns & globes, and C&PRR items. Joseph G. Hauger, 401 2nd St., Terra Alta, WV, 26764. E-mail address: whiteoak4@verizon.net or phone 304-789-2229.

Wanted: Hardware items from Gary Railways, EJ&E and CLS&E, NYCL oiler keys, NYC Subdivision tags and livery and dray badges. Contact Jeff Wolfe at lobowolf@aol.com.

Wanted: Lanterns, globes, locks, keys, hat badges, RR PD or RR Fire Dept items, Long Island RR & Staten Island Rapid Transit. Bob Myers, 36 Pine Hollow Lane, Greenlawn, NY 11740. 631-757-9540. robertrail@yahoo.com.

Wanted: Items from the Surry, Sussex & Southampton Ry. Jerry Rakes, PO Box 384, Tappahannock, Va 22560.

Wanted: B&O Yale signal locks, cast B&O or Y&T Butler, Charleston, Delphos, Ohio River & Shenandoah divisions. David W. Robinson. dwrbo@aol.com. 540-820-8998.

Wanted: Factory marked ICRR tall lanterns by Defiance, Universal Spinning & Stamping, Prier Brass Co. Globe not important. Good condition & complete. Larry Davis, 5110 Hollywood Ave, Shreveport, LA 71109. 318-469-7825.

Wanted: Railroadiana from Huntington & Broad Top Mountain RR (and Coal Co.). PA shortline 1850's-1950's. John Houpp - call 610-745-2923 or e-mail jdhoup@hotmail.com.

Wanted: DL&W keys & locks. Bill Roberts. 8812 Mourning Dove Court, Gaithersburg, MD 20874. E-mail: whadydrob@aol.com or call 301-977-3025.

Wanted: LV, D&H, CV switch, signal, mechanical, motive power dept. lock sets. Uniform cap badges. Anything northeast. Chuck Hall. 315-824-1674. E-mail: mollymussonhall@yahoo.com.

Wanted: Cast brass fancy back railroad switch locks. Instant cash paid for any lock not already in my collection. I also have a list of approximately 125 rare cast switch locks for sale or trade. Contact Warren at 239-996-0253 or warrennyergesjr@hotmail.com.

For Trade

For Trade: Switch key marked SRRR (Sandy River RR?) and LC&N Co Casey lantern. I collect southern lower Michigan and also want 6" colored globes. Walter at walter-sulowski@msn.com.

KEY LOCK & LANTERN

Index on Computer CD

Index of all KL&L Magazines from Issue #1 through Issue #151 in searchable Acrobat (PDF) format. \$7.95 postpaid. Contact:

Marie Brainard
35 Nordhoff Place
Englewood, NJ 07631-4810

Membership Brochures

Are Available in PDF Format for Printing & Distribution at Railroadiana Shows, Historical Museums, Railroad Club Meetings & Other Events

Download the Current Version at
www.klnl.org

Back Issues

See our website at www.klnl.org
for back issue sales.



All submissions for the KL&L magazine, news items for the digital KL&L News & general inquiries should be sent to:

KL&L President & Editor
David Hamilton
244 Elm Ave
Delmar, NY 12054
E-mail: transportsim@aol.com

Send membership applications, dues payments, address changes & want ads to:

KL&L Chairman John Brainard &
VP-Membership Marie Brainard
35 Nordhoff Place
Englewood, NJ 07631
E-mail: j944wb@aol.com

KL&L Membership Form (July 2012 - June 2013 Membership Year)

Please make check or money order payable to Key, Lock & Lantern, Inc. and forward to:
Marie Brainard, KL&L Membership, 35 Nordhoff Place, Englewood, NJ 07631-4810

Name _____

Representing (business or museum, if applicable) _____

Address _____

City _____ State/Prov _____ Zip/Mail Code _____

Phone _____ E-mail _____

Basic membership at \$30 per year (1st Class mailing in USA) or \$40 per year (non-USA).....\$ _____

Contributing membership at \$35 per year, to help support KL&L(1st Class mailing in USA)..... \$ _____

Additional family members at \$4 per person (only one magazine is sent per family).....\$ _____

Additional Donation.....\$ _____

Enclosed is my check / money order payable to Key Lock & Lantern, Inc. for.....\$ _____

Membership in KL&L includes 4 issues of the magazine, and the annual membership period begins in July of each year. New members joining before April will receive all previously published magazines for the year, and will be due for renewal in July. New members joining in April, May or June will have their dues applied to the next membership period, beginning with the Jul/Aug/Sep issue, unless otherwise requested.