



KEY LOCK & LANTERN NEWS



Mar/Apr 2016

Issue No.38

The Bi-Monthly Digital Supplement to Key Lock & Lantern Magazine



Key Lock & Lantern
Convention Registration

Railroad Museum &
Preservation News

January Brookline
Railroadiana Auction



KEY LOCK & LANTERN NEWS



The Bi-Monthly Digital Supplement to Key Lock & Lantern Magazine
WWW.KLNL.ORG

Mar/Apr 2016

Issue #38

From the President's Desk	3
Railroad Event Calendar.....	3
Key, Lock & Lantern Convention Registration.....	4
January Brookline Railroadiana Auction.....	6
Adirondack Scenic Railroad Excursion.....	8
Norfolk & Western 611 Excursion Schedule.....	10
New York Central 6721 Takes One for the Team.....	12
KL&L Convention Opens to Outside Vendors.....	15
KL&L Membership Renewals Due.....	20
California State Railroad Museum Excursions.....	21
Want Ads & Announcements.....	23
Membership Application	24
KL&L News Editor.....David Hamilton	
Production Facilities.....NY-PA Collector Magazine	

The Key, Lock & Lantern News is published bi-monthly as a digital supplement to the quarterly Key, Lock & Lantern magazine. Recipients may repost or forward complete and unmodified copies of this newsletter to other hobbyists and websites, but its content may not otherwise be copied or distributed without the permission of the KL&L Board of Trustees. Copyrights are held by the respective authors and photographers. Excerpts of news items may be published with the credit line "Key, Lock & Lantern News"

Annual membership dues for Key, Lock & Lantern are \$30 for residents of the USA, and \$40 for outside of the USA (by money order or electronic payment in US funds). Members receive four issues of the quarterly KL&L magazine, delivered via first class mail. Memberships for additional family members are \$5 each (only one magazine is sent per family). Applications for membership & address changes should be forwarded to the VP-Membership at the e-mail address listed at right. Online membership forms and dues payment via Paypal are available at www.klnl.org.

Contributions of articles, photos, and news may be forwarded to the editor at the e-mail address listed at right. Hard copy articles should be written on 8 1/2 x 11" paper, and typed or neatly printed. Photos should be sent with a caption card attached which includes the contributor's name, phone number, and description. Photocopies of advertising and supply catalogs are acceptable. The submission of material in digital format is preferred, with text files in DOC, TXT, or PDF format, and images in JPG, TIF, BMP or GIF format. Digital files may be sent by e-mail or on a computer CD or flash drive. Please contact the editor regarding optimum file sizes and formats.

By submitting material to Key, Lock & Lantern, the contributor grants permission for use in any edition of the KL&L magazine, digital newsletter, websites, and other publications. All material will be retained by KL&L for future use, unless the contributor specifically requests that it be returned, and includes a suitable, self-addressed, stamped envelope. Current deadlines are listed in the Key, Lock & Lantern Advertising Guide, which is available on the KL&L website at www.klnl.org, or by contacting the editor.

Key, Lock & Lantern

A non-profit membership corporation dedicated to the preservation of transportation history and railroad memorabilia

The mission of Key, Lock & Lantern is to gather and publish information on the history of the transportation industry, and to support the preservation of railroad artifacts. KL&L members have an interest in all aspects of railroad & transportation history, from research and preservation projects to the conservation and restoration of all types of historical memorabilia. Originally formed in 1966, Key, Lock & Lantern, Inc. was officially incorporated in 1988 as a non-profit, educational, membership corporation in the State of New Jersey, under the provisions of Section 501(c)(3) of the United States Internal Revenue Code. Membership is open to anyone with an interest in transportation history and in achieving the goals of the organization.

Officers & Trustees

Chairman of the Board

John Brainard
j944wb@aol.com

President & Editor

David Hamilton
transportsim@aol.com

VP- Membership / Treasurer

Marie Brainard
j944wb@aol.com

Secretary

Marie Brainard (Acting)

Chaplain

Vacant

Counsel

Jeremy Tuke

Historian

Peter Gores

Trustees at Large

Cal Bulman, Lyman Gray, Patti Gray, Sam Lombardi, Joel Shaw, Sam Ferrara, Mike Sullivan, Phil Simms, George Shammass, Leonard Gordy, Bob Lipman, Randy Bushart

www.klnl.org



For Current News
"Like" KL&L on

facebook

It's Lobster Month at Key, Lock & Lantern

I always chuckle a little bit when I see television ads that proclaim "It's Lobster Month at Red Lobster restaurants." Well, no kidding; isn't every month "lobster month" at a restaurant called "Red Lobster?" In reality, the restaurant serves a variety of seafood, so it isn't very surprising that it has different promotions each month, including one for the product that is prominently featured in its name. In fact, the company once had a more general title for its restaurants, but changed it to the catchy "Red Lobster" name that has widespread brand recognition today. We pretty much know that they serve more than just lobster, though.

What does this have to do with Key, Lock & Lantern? Often, KL&L comes up in conversations with other railroad history buffs and collectors, and many tell me that they aren't really interested in keys, locks or lanterns, but they collect badges, timetables, china, or books, or are simply interested in railroad history or photography. This is their reason for not getting involved with the organization. But just like the popular seafood restaurant, there is more to our organization than the name might imply.

Key, Lock & Lantern was originally formed by Paul Pietrak in 1966, as a newsletter for collectors of railroad hardware. However, as the magazine expanded during the 1970's, it began to include articles not only about all types of railroad memorabilia, but general railroad history, as well. When the group was formally organized in the 1980's, its bylaws gave KL&L a more broad mission, that covers many aspects of the preservation of transportation history.

Every successful organization has a niche, and KL&L still has Paul's first newsletter at its core. The magazine covers topics related to railroad artifacts that won't be found anywhere else, and we do pay a little extra attention to the study of railroad hardware (our "lobster," if you will). But we also devote space to timetables, tickets, photos, and other relics from the history of the transportation industry. In my view, the term "memorabilia" also includes the stories from railroaders that give life to the history that we work so hard to preserve, and those have a place in the magazine, too.

To get a better idea of the diverse interests of the members of Key, Lock & Lantern, make plans to attend our annual convention in Utica, NY on June 3rd through 5th. At the Railroad History Exposition, you will find displays of china, lanterns, builders plates, postcards, and everything else that is related to railroad history. The topics of conversation in the pub in the evening range from canal boats to modern railroad operations. It is truly a gathering of all types of transportation historians and collectors.

We could change the name of the organization to something like "the society for the preservation of transportation history and artifacts," but "Key, Lock & Lantern" has been around for 50 years now, and has a nice ring to it. Just don't overlook the fact that, like Red Lobster, there is more to our organization than is simply found in our name.

Dave Hamilton, KL&L President & Editor

Railroad Event Calendar



Upcoming historical society conventions, special events, railroadiana shows & auctions. Listings subject to change. Check show web sites before traveling and visit www.klnl.org for updates. See submission guidelines at the end of the calendar.

- Apr 2** **Pine Bluff, AR** - Arkansas Railroad Museum Railroadiana Show & Sale.
Info: www.arkansasrailroadmuseum.org.
- Apr 3** **Griffith, IN** - Blackhawk Chapter NRHS Swap Meet Railroadiana Show.
Info: www.blackhawknrhs.org.
- Apr 9** **Clarks Mills, PA** - Railroadiana Estate Auction Simonetta Auctions. www.auctionzip.com/PA-Auctioneers/414312.html
- Apr 9** **DeLand, FL** - Florida Rail Fair. Volusia County Fairgrounds
Info: www.gserr.com.
- Apr 9-10** **Randolph, MN** - Randolph Railroad Days. Info: www.facebook.com/RandolphAreaHistoricalSociety.
- Apr 9** **St. Cloud, MN** - Granite City Railroad Show. National Guard Armory.
Info: www.granitecitytrainshow.com.
- Apr 10** **Amsterdam, NY** - Alco Historical Society Rails Along the Mohawk Train Show.
Info: www.ahts.org.
- Apr 10** **Batavia, NY** - Spring Great Batavia Train Show. Clarion Hotel.
Info: www.gsme.org.
- Apr 11** **Lone Jack, MO** - Bidding closes in online railroadiana auction. Dirk Soulis Auctions.
Info: www.dirksoulisauctions.com.
- Apr 14-16** **Golden, CO** - ATRRM Spring Conference. Colorado Railroad Museum
Info: www.atrrm.org.

Continued on Page 22

On the Front Cover:

An Adirondack Scenic Railroad train departs from Thendara, NY enroute to Utica via the former New York Central RR Adirondack Division. Dave Hamilton photo.

Key Lock & Lantern Convention in Utica, NY to Feature Railroad History Exposition & Excursion



Key, Lock & Lantern would like to invite all railroad history buffs and collectors of railroadiana to join us in Utica, NY for the 44th Annual Key, Lock & Lantern Convention, to be held over the weekend of June 3-5, 2016. Events include the traditional Railroad History Exposition, with railroad history displays, a railroad collectors market, and railroadiana fundraiser auction, which will be held on Saturday, June 4th, in the historic Hotel Utica. A banquet will be held following the show, at the Trackside Restaurant in Utica Union Station,

Key, Lock & Lantern members arrive at Utica Union Station on Amtrak train #281 for the 2015 KL&L Convention, as an eastbound CSX freight passes the station and Mohawk Adirondack & Northern RR and Adirondack Scenic RR crews work in the yard. All photos by Dave Hamilton.

featuring a buffet dinner and railroad history presentations by Key, Lock & Lantern members. On Sunday, June 5th, a specially chartered excursion train will operate over the Adirondack Scenic Railroad from Utica to Big Moose, NY. There will be numerous photo opportunities on the trip, and several seating & lunch options are available.

The annual Key, Lock & Lantern Convention is different from the big railroad hobby shows, as it is a smaller gathering of serious railroad historians and collectors, where the sharing of knowledge is just as important as finding a “good deal” on railroadiana. Convention attendees include current and retired railroaders, railroadiana dealers & collectors, authors, researchers, and representatives of historical societies and museums. More than just a railroadiana show, it is a forum for those who have a sincere interest in historical preservation to share ideas and show off the results of their research and conservation efforts.

Informal convention activities begin on Friday, June 3rd. The Madison-Bouckville antique dealers, located south of Utica along Route 20 (about a 30 minute drive from the city),

Continued on Page 5



The Key, Lock & Lantern Convention is a gathering of railroad historians and collectors of railroadiana.

will hold their spring antique show from 8am to 5pm. Over 150 dealers, in addition to the regular shops, are expected to set up tables in several of the show fields that host the big antique show later in the summer. There is also plenty of modern railroad action to view in the Utica area, with the former New York Central mainline, now operated by CSX, passing through downtown, and regional railroads Mohawk Adirondack & Northern and the New York, Susquehanna & Western providing service on adjoining branch lines.

Key, Lock & Lantern members will be able to check in at a KL&L table in the Hotel Utica lobby, starting at 3:00pm on Friday afternoon, in order to facilitate “room hopping” and early trading of railroadiana. There are several dinner options available in the neighborhood around the hotel, with a variety of choices ranging from fast food to fine dining on nearby Genesee Street. The evening schedule is open for socializing in members’ rooms and the hotel pub. The KL&L Board of Trustees meeting will be held at 8:00pm in the Saranac Room.

The Railroad History Exposition, to be held in the Saranac Room and Mezzanine of the Hotel Utica from 10:00AM to 2:00PM on Saturday, June 4th, features displays of railroad artifacts, photos, and related memorabilia, along with



Historic equipment on the Adirondack Scenic Railroad lays over at the Thendara, NY station. Photo by Dave Hamilton.

Exhibits will close at 2:00PM, in order to allow exhibitors to pack up in time for dinner. In the past, a popular part of the convention was the Saturday evening banquet, and this event returns this year. A buffet dinner will be held at the Trackside Restaurant in Utica Union Station, with a cocktail hour at 5:00PM and dinner served at 6:00PM. Following the meal, railroad history programs will be presented by KL&L members, with slides, movies, and digital programs. Members are encouraged to prepare a short presentation of 15 to 20 minutes, to be shown at the banquet. Contact Dave Hamilton at transportsim@aol.com to make arrangements.

A new activity at the convention in recent years has been excursions on historic railroads. During the 2014 convention, KL&L members rode the Adirondack Scenic Railroad wine tasting train, and in 2015 KL&L chartered the Adirondack Scenic train for a Saturday night run to Boonville, and the nearby Cooperstown & Charlotte Valley Railroad train for



The Railroad History Exposition features displays of railroad artifacts and dozens of railroadiana dealers.

exhibits by railroad museums and historical societies. Most exhibitors will also offer railroadiana for sale or trade in a Railroadiana Collectors Market, held in conjunction with the displays. Convention attendees are invited to bring railroad memorabilia that they are interested in selling, and a table at the show will be set aside to make it easier to conduct “parking lot deals.”

The annual membership meeting of Key, Lock & Lantern will be held in the Saranac Room at 11:00am, followed by the annual railroadiana fundraiser auction. This entertaining event features the sale of donated railroad memorabilia, with all proceeds going to support the activities of KL&L. There are usually some good deals to be found, along with more than a few laughs. Following the auction, a light lunch and refreshments will be served for exhibitors, sponsored by the New York-Pennsylvania Collector Magazine.

Continued on Page 14



The Medina Railroad Museum was one of several historical groups that exhibited at the 2015 convention.

With a Non-Stop Stream of Consignments Brookline Adds January Auction to Lineup

With several large collections in the process of being sold, and a non-stop stream of consignments, the Brookline Auction Gallery of Brookline, NH added a January auction to its usual spring & fall lineup. Artifacts from a large Pennsylvania RR collection have been joined by a variety of railroadiana collected by Jim Middleton, along with groups of switch keys, dater dies, and baggage tags. Smaller consignments of china, books, and paper have rounded out recent sales, with plenty of scarce and interesting memorabilia slated for future auctions. If the results of the January, 2016 auction are an indicator, the upcoming April 23rd and October 1st sales will be events that shouldn't be missed. *All photos, prices, and descriptions courtesy of Scott Czaja - Brookline Auction Gallery. Prices do not include buyers premiums or shipping.*



Buffalo, Rochester & Pittsburgh Dietz No.39 lanterns are relatively common, but this nice example with matching clear cast globe still commanded a \$170 high bid.



A high bid of \$220 was needed to purchase this unusual New York Central System Operator uniform cap badge.



A nice brass lock and key set from the Delaware Lackawanna & Western RR sold for a high bid of \$150.



A \$190 bid was needed to take home this Maine Central Kennebec pattern butter pat by Onondaga Pottery.

Continued on Page 16

Railroadiana Auction – April 23, 2016 – Brookline, NH

Auction information including photos - www.tagtown.net

Scott Czaja - Sales Manager (978) 779-2904

an auction by a collector for collectors

Quality Lanterns & Lamps, Switch Keys, Photos & Slides, Bells, Narrow Gauge, Whistle Collection, Badges, Baggage Tags, Dater Dies, Rutland Silver, Books



Now on LiveAuctioneers.com - We also accept absentee bids via: email & mail
Quality consignments are welcome for future sales - call Scott or email: sczaja@hotmail.com

Adirondack RR Excursion to Big Moose to Feature First Class Seating & Photo Stops

All aboard for Big Moose, on the Key, Lock & Lantern Adirondack Express! Passengers on the June 5th Key, Lock & Lantern excursion train on the Adirondack Scenic RR from Utica to Big Moose, NY will enjoy a special trip that is tailored specifically to railroad fans. While the regular tourist trains on the former New York Central Adirondack Division are an enjoyable activity for railroad buffs, they are geared toward the general public, with layover time planned for shopping and visiting Old Forge. Instead of a local sightseeing stop in the schedule, the KL&L trip will include several photo opportunities and more time to enjoy the “railroading” aspect of the excursion. All railfans are invited to join the members of Key, Lock & Lantern for this special excursion.



Historic equipment is part of the unforgettable experience of a trip on an Adirondack Scenic Railroad excursion train.



Some of the remote Adirondack scenery near Big Moose that is only accessible by the Adirondack Scenic train.

train to arrive back in Utica at approximately 5:30PM, with additional photo opportunities during the switching moves at the end of the run.

Three different coach seating options are available for the excursion: A basic coach ticket, with no meal included, is \$38 for KL&L members, and \$45 for non-members. Snacks will be available on the train. A coach ticket that includes a box lunch served on the train at Big Moose is \$50 for KL&L members and \$57 for non-members. A limited number of coach tickets that include the buffet lunch at the Big Moose Station restaurant are available to KL&L members at \$53 each. After April 10th, any remaining buffet tickets will go on sale to non-members at \$60 each.

Continued on Page 9

Boarding is scheduled to begin at 9:15AM on Sunday, June 5th, with departure from Utica Union Station planned for 9:45 AM. The train will consist of several historic former Canadian National intercity coaches, a snack bar car, and an open baggage car that will allow passengers to enjoy the cool Adirondack breeze as the train rolls through the wilderness.

The train will arrive at Big Moose, the highest point on the line, at lunchtime. Box lunches will be distributed on the train to those who have ordered them, while passengers who have purchased a buffet ticket will enjoy the classic railroad lunch room experience in the Big Moose Station restaurant. There will be several photo opportunities at Big Moose, during the short layover and runaround.

On the return trip, several photo stops and/or runbys are planned, including one at the historic Thendara station. Other equipment is expected to be available for inspection at this stop, as well. Other photo stops are currently being arranged, and will be announced in the near future. It is planned for the



Coach passengers on the Adirondack Scenic RR ride in comfort on former Canadian intercity equipment.

Adirondack Scenic Excursion

Continued from Page 8

This year, KL&L is pleased to offer First Class tickets in the private cars *Nehasane* and *Silver Spring*. Passengers will travel in style, just as the railroad barons did, in cars that were once used on inspection trips by railroad officials. Each car includes private staterooms, a dining room & kitchen, a rear observation lounge and open rear platform. One car will operate on the rear of the train on the northbound leg of the trip, and the other on the southbound leg.

Onboard the cars, First Class passengers will enjoy the comfortable seating of the lounge area, while “Pullman” car attendants serve snacks and beverages. The open platform will be available for an unobstructed view of the Adirondack Scenery, as the rails disappear behind the train around each bend. Upon arrival at Big Moose, a buffet lunch will be served in the restaurant at the station, while the train crew repositions the cars for the return trip. Of course, First Class



*First Class tickets in the *Nehasane* & *Silver Spring* private cars are available on this year's KL&L charter train.*



Key, Lock & Lantern members enjoy the open baggage car on the 2015 KL&L Boonville Dinner Express train ride.

passengers will be able to participate in all photo stops on the trip, as well. First Class tickets are currently on sale to KL&L members for \$149 each. After April 10th, any remaining tickets will go on sale to the public for \$159 each. Ticket sales will be limited to 10 seats in each car, in order to maintain a luxury atmosphere.

Tickets are available for purchase on the KL&L website at www.klnl.org, and a printable order form is included in this issue of the *KL&L News*. Key, Lock & Lantern members should use the online registration page, or the KL&L member registration form, in order to receive the discounted rates. Members of other railroad historical societies and organizations are invited to arrange an outing to ride the train, and will receive a \$5 discount per ticket for groups of 20 people or more. Contact KL&L president Dave Hamilton at transportsim@aol.com to make arrangements.

Railroad fans who have never ridden on the Adirondack Scenic Railroad will discover that it is not a typical tourist train that chugs along at slow speeds for a handful of miles. Trains on the Adirondack Scenic operate over portions of the

New York Central's St. Lawrence and Adirondack divisions, that were once the route of overnight Pullman trains to the remote camps, timber lands, and Montreal. Trains operate over the regional Mohawk, Adirondack & Northern Railroad to Remsen, where they diverge to home rails extending to the summit at Big Moose. Much of the line has been restored to permit 40MPH operation, allowing for a trip much like in the days of the New York Central. It is truly a journey that must be experienced.

Remember, tickets that include the buffet lunch at Big Moose and First Class tickets are only available in limited quantities, so reservations should be made early. These tickets will go on sale to the public on April 10th (or join KL&L today and register for the convention at member rates), and regular coach & box lunch tickets are on sale now. All aboard for the Adirondacks!



*First Class tickets include lounge seating (the *Silver Spring* is shown here), snacks, beverages, and a buffet lunch.*

Schedule Announced for 2016 Norfolk & Western 611 Steam Excursion Season

The Virginia Museum of Transportation has announced an extensive 2016 excursion schedule for their former Norfolk & Western J-class steam locomotive No.611. Trips will begin on April 9th, with “The Virginian” making a round trip from Spencer, NC to Lynchburg, VA. On April 10th, the “Blue Ridge Special” will run from Spencer to Asheville, NC and return.

The 611 then heads to Greensboro, NC for two round trips to Roanoke, VA, on the April 23rd & 24th “Roanoker” train. During the layover, passengers will have time to eat lunch and visit the Virginia Museum of Transportation and the O. Winston Link Museum.

Railroad enthusiasts in Roanoke will have the chance to ride behind the famous steam engine on May 7th & 8th, when the “Powhatan Arrow” makes round trips to Lynchburg, VA on two half-day excursions. This trip will pass through the Blue Ridge Mountains and cross the high bridge over the Big Otter River. The second half-day runs on those two dates will be to Walton, VA, on the “Pelican.” This run will pass through the Montgomery Tunnel and follow the Roanoke River.

The railroad town of Manassas, VA is the next destination for the 611, when it pulls the “American” to Front Royal, VA on June 4th & 5th. This trip will operate over former



Southern Railway tracks on a 102-mile round trip. The locomotive will also be on display at the Manassas Heritage Railway Festival on June 4th, after it returns from hauling the excursion train.

During the month of June, the 611 will be on display at the Virginia Museum of Transportation in Roanoke, and will visit the North Carolina Transportation Museum in Spencer during the month of July. It is tentatively planned for the locomotive to return to Roanoke during August, and then head back to Spencer for maintenance in September. Over the weekend of September 24th & 25th, the 611 will appear at the Danville, VA Rail Heritage Days.

A variety of ticket options are available on different trips, including standard coach seats, deluxe coaches with reclining seats, First Class lounge seating, dome cars, and “Chairman’s Class” with food service at your seat. Prices vary, depending on seating option and length of trip. For information on the various excursions and ticket sales, visit www.fireup611.org. *Photo courtesy of Norfolk Southern.*

KEY LOCK & LANTERN

**Can Help Promote Your
Auction, Show or Event**

**With Advertising in KL&L Publications
850+ Facebook Members
1200 Monthly Web Visitors
750+ Newsletter Readers**

Contact KL&L Editor Dave Hamilton at
transportsim@aol.com

Railroad Museums

Send in news & photos to

KEY LOCK & LANTERN

E-mail: transportsim@aol.com

Online Only
Internet Auction of Railroad Collectibles

Open for Bidding Now through April 11

There will be no live auction. All items will be available for inspection any time by appointment or Saturday, April 2nd from 12 noon to 4 pm.



Two combined collections! Visit DirkSoulisAuctions.com for more details.



DIRK SOULIS AUCTIONS

Fine Art and Antiques Worldwide

529 West Lone Jack Lee's Summit Road, Lone Jack, Missouri 64070
816.697.3830 | www.DirkSoulisAuctions.com

Railroad Preservation & Museum News

New York Central 6721 Takes One for the Team

The afternoon of July 21, 2015 was a typical one at Union Station in Utica, NY. As the working day ended at 5 o'clock, workers from the county offices in the renovated station began strolling out to their cars in the parking lot along the tracks on the east end of the building. On the way, they passed Amtrak passengers who were beginning to gather for the arrival of train No. 283. It was a nice day, so many people were waiting outside of the station, in a small courtyard on the east side of the walkway to the platforms. Immediately opposite the outdoor benches, on the west side of the walkway, the Utica & Mohawk Valley NRHS chapter's New York Central steam locomotive No. 6721 sat on display, its black paint glistening in the light of the setting sun.

No one at the station knew that they were playing a part in a scene that could have been taken right from the script of a disaster movie. Several miles south of downtown, a covered hopper car loaded with over 100 tons of plastic pellets sat on a storage track, awaiting delivery to a customer of the

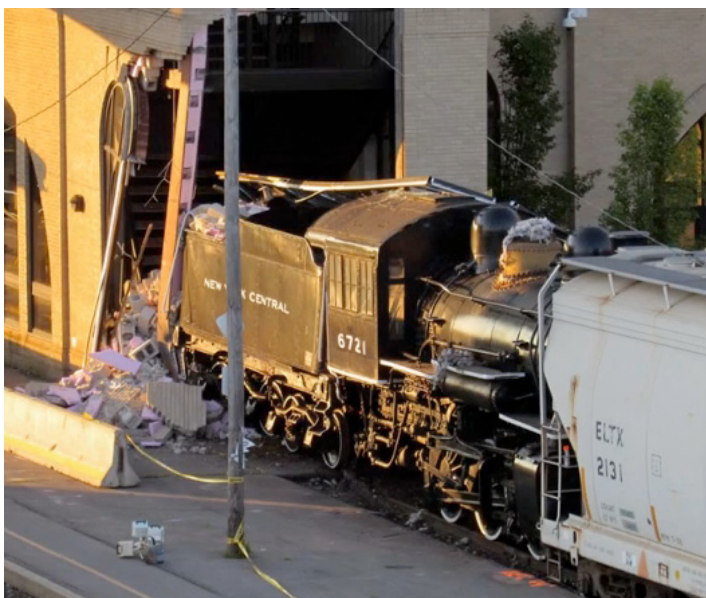


New York Central steam locomotive No. 6721, on display at Utica Union Station during the 2015 KL&L Convention.

and down the hill into Utica. Picking up speed, it clipped an automobile on the stretch of street running trackage on Schuyler Street, injuring the driver, before rolling across the busy Oriskany Boulevard crossing as motorists watched in disbelief.

Rounding the bend to the east, the runaway hopper car entered the NYS&W yard that parallels the CSX mainline. By chance, the switches were lined for a clear track, so the car passed through the yard unhindered. The east end yard lead extends to the station track that was once used by DL&W passenger trains to access Union Station, with

Continued on Page 13



New York Central steam locomotive No. 6721, after stopping a runaway covered hopper from destroying the Utica Union Station walkway and entering a courtyard filled with passengers. Photo by John Koslosky from the Railroading Rambler Facebook & YouTube websites.

regional New York, Susquehanna & Western Railway. A teenage boy came wandering by, and decided to climb up on the end of the car. Whether he had previously seen trainmen operating handbrakes or if it was just by chance is unknown, but without knowing the consequences, he pulled the lever releasing the car's brakes.

The former Lackawanna branch that makes up the NYS&W mainline is on a descending grade from Paris Hill all the way into downtown Utica. As soon as the handbrake on the car was released, it began rolling northward out of the siding



The roof walkway on the runaway covered hopper hangs over the headlight on the No. 6721, after it stopped the car in its tracks. Photo by John Koslosky from the Railroading Rambler Facebook & YouTube websites.

New York Central No. 6721

Continued from Page 12

the active track ending at a bumping block just west of the station. The New York Central No. 6721 sits on display on a short segment of rail between the bumper and the station walkway.

Rocketing down the stub track, the loaded covered hopper smashed through the bumping block as if it were made of tin foil. Directly ahead was the stairwell and supporting columns for the overhead walkway across the CSX mainline, and beyond that was the courtyard filled with Amtrak passengers and departing office workers. All that stood in its way was the New York Central No. 6721.

Slamming into the historic locomotive, the hopper car shoved its tender back into the walkway structure, causing the west side wall to crumble. As the ground shook and clouds of dust enveloped the courtyard, passengers began to scatter, but there was not enough time to escape if the runaway car penetrated the east side of the building.

However, the old steam locomotive stopped the covered hopper dead in its tracks, just short of causing the walkway to collapse on the waiting passengers and the adjacent mainline. Miraculously, no one in the station was injured. After many long years of retirement, the old 6721 had performed service for the railroad one more time.

During the following week, the runaway car was removed, and work began to extract the No. 6721 from the crumbled wall of the overhead walkway. Several supporting beams had been damaged, and it was necessary to stabilize the structure



New York Central No. 6721 sits along the platform at the west end of Utica Union Station, awaiting repairs to the damage from the collision. Photo by John Koslosky from the Railroading Rambler Facebook & YouTube websites.

before the locomotive could be pulled out. Once the engine was clear of the wall, repairs began on the walkway, but it was many months before it was returned to full service.

The 6721 suffered extensive damage to its front end, with the pilot, coupler, steps, and number plate destroyed. The headlight, cylinders, and smoke box door also received impact damage. When the collision occurred, the tender was pinned between the steel beams of the station wall and the locomotive, bending its frame. When the wall collapsed, most of the debris landed on the tender and the locomotive cab, causing additional damage.

The New York Central No. 6721 had been cosmetically restored through thousands of hours of hard work by the members of the Utica & Mohawk Valley Chapter of the National Railway Historical Society. It was a popular attraction at the station, with visiting railfans and Amtrak passengers alike enjoying this link to the past. It has been reported that an arrangement has been made between the insurance carriers of the railroad and the chapter to cover the repairs to the locomotive, and work is expected to begin this summer. In the meantime, the Utica & Mohawk Valley NRHS is accepting donations in support of the project.

When the work is complete, the 6721 will no doubt still bear a few scars from the day when it prevented a major disaster from taking place. While it may have lacked the drama of incidents such as the Washington Union Station GG-1 runaway, hopefully there will be at least a short mention in future railroad history books of the day that No. 6721 “took one for the team.”



A view showing the potential for disaster if the 6721 had not been in place to stop the runaway car from penetrating the station walkway. Photo by John Koslosky from the Railroading Rambler Facebook & YouTube websites.



Visit the KL&L YouTube Channel for links to surveillance camera video footage of the runaway and videos of the aftermath from the Railroading Rambler Channel

www.youtube.com/user/KeyLockLantern

2016 KL&L Convention

Continued from Page 4

a Sunday railfan photographer's special. Many members who enjoyed these trips have indicated that they would like to have the opportunity to ride over the entire Adirondack Scenic Railroad line from Utica to Big Moose, NY. For the 2016 convention, KL&L has again chartered the Adirondack Scenic train, this time for a day-long round trip to Big Moose on Sunday, June 5th.

Boarding will begin at 9:15AM, with departure scheduled for 9:45AM. The train will travel over the former New York Central Saint Lawrence Division (which we covered during last year's trip) before diverging onto the old Adirondack Division north of Remsen. We will proceed through the scenic Adirondack wilderness to the remote community of Big Moose, the highest point on the line. After a lunch stop and runaround move, the train will return to Utica, making several photo stops along the way. Arrival is scheduled for around 5:30PM. For more details, see the related article on Page 8 of this issue.



This display of a variety of rare and early lanterns was one of the many excellent exhibits at the 2015 KL&L Convention Railroad History Exposition. Dave Hamilton photo.



Compared to the big hobby shows, the smaller size of the Key, Lock & Lantern convention allows for more time to network with other railroad historians and collectors.

The Hotel Utica is once again offering a special rate for KL&L Convention attendees of \$83 per night + tax. Please call the hotel directly at 315-724-7829, and mention the "Key Lock & Lantern Railroad Collectors Convention" to get the special rate. The hotel is located at 102 Lafayette St., just off Genesee Street in downtown Utica, and is within walking distance (1/4 mile) of Union Station. The nearby Best Western Gateway Adirondack Inn, at 175 N. Genesee Street, is also offering a special rate of \$95 per night + tax. Call 315-732-4121 and ask for the "Key Lock & Lantern" rate when making reservations.

Online registration for the various convention events is now open on the Key, Lock & Lantern website at www.klnl.org. Printable member registration forms, non-member vendor table forms, and non-member train ticket sales forms are all included with this issue, along with a convention flyer. Space

is limited for some events, so it is highly recommended that registration forms and hotel reservations be completed early. Certain train tickets will be reserved for purchase by KL&L members until April 10th, at which time they will go on sale to non-members.

Hopefully, the 44th annual Key, Lock & Lantern Convention has already been on your calendar since we first announced the dates last fall. It is now time to register for table space, banquet seats, and train tickets! Send in your registration form or register online today for what promises to be yet another enjoyable event with our fellow railroad historians and railroadians collectors.



Exhibits at the Key, Lock & Lantern include a variety of railroad hardware, ephemera, and photos, usually involving one specific theme. Dave Hamilton photo.



For Additional Photos, Visit the KL&L Page on Facebook. Use the link at www.klnl.org.

Exhibitors & Presenters Invited to KL&L Railroad History Expo & Evening Program

Since the Key, Lock & Lantern Convention began over four decades ago, the “main event” has always been the railroadians swap meet and exhibits of railroad memorabilia. In the past, registration for display & sales table space was restricted to KL&L members, due to space limitations in the exhibit hall. With our move to the Hotel Utica, the opportunity to expand our Railroad History Exposition became available, and exhibit space in the mezzanine was added to handle last-minute registrants in 2015. With the additional space, KL&L members who expressed an interest were able to invite non-member friends to share a table.

This new feature of the convention was a huge success, with several excellent displays from new participants (including the “Best in Show” winner), and several new dealers of railroadians. As a result, KL&L has again reserved the Hotel Utica mezzanine, in addition to the Saranac Room, and table space will be available this year to non-member exhibitors and vendors. Tables measuring 3x7 feet are \$30 each, and may be reserved through the KL&L website or by sending in the Vendor Registration Form included with this newsletter.



The members of Key, Lock & Lantern arrange a variety of excellent displays, and we are pleased to invite other collectors and history buffs to join us in exhibiting in 2016.



The original railroad artifacts offered for sale and trade at the KL&L convention are always “top shelf” material.

To preserve the unique atmosphere of the convention, the guidelines for member displays also apply to non-member exhibitors and vendors. Sales are limited to original artifacts, parts, collecting supplies, new & used books, historical videos, and other products directly related to the history of railroads & transportation. Exhibits must feature railroad, transportation or industrial history, and may consist of displays of artifacts, photos, and visual materials; or may promote the activities of a historical group or museum. Models and toy trains are not permitted, except when an integral part of a railroad history display. Reproductions must be clearly marked, and fakes produced with the intent to deceive are prohibited.

Everyone who attends the Railroad History Exposition is also invited to join the members of KL&L for a dinner and railroad history program at the Trackside Restaurant on Saturday evening. Located in the historic Utica Union Station, the restaurant is reminiscent of the station dining rooms of the golden age of railroading. Instead of a single keynote speaker, the program will consist of presentations by KL&L members and other transportation history buffs. Anyone who would like to present should contact KL&L president Dave Hamilton at transportsim@aol.com.

Presentations should be from 10-20 minutes in duration, and may consist of movies, slides, or digital media. While the presentation is not required to be on a researched topic, it should be on one general theme related to transportation or railroad history. Since many of us are getting older, even slides that we shot fifteen or twenty years ago would be considered “historical.” Current material about preservation projects or industrial archaeology is also welcome.

Tickets for the banquet and program are \$25 per person, and are available online at www.klnl.org. They may also be ordered using the member registration form or the vendor registration form included with this newsletter.

Key, Lock & Lantern is excited to invite all transportation history buffs and collectors to participate as exhibitors and vendors at the 2016 convention. Attendees who do not have enough material to fill a table are invited to bring what they have to the Railroad History Exposition. An empty table will be available to facilitate the “parking lot deals” that have been a convention tradition. The KL&L convention is not a typical train show - it is a gathering of serious transportation history buffs and collectors. Make plans to join us today!



A \$240 bid took home this unusual Boston & Albany RR Police Deputy Chief badge, with Massachusetts seal.



Move over west coast big spending collectors! This New York, Lake Erie & Western brasstop bellbottom lantern by Steam Gauge & Lantern sold for a high bid of \$1100.



A scarce 6" Maine Central Railroad Bangor pattern dish by ML China in excellent condition sold for a high bid of \$500



A \$140 bid was needed to buy this interesting Adirondack & Saint Lawrence Railway baggage tag from Herkimer, NY.



Some of the switch keys in the sale: Detroit Grand Rapids & Western Ry (\$400), New York Ontario & Western RR (\$200), Saint Louis Southwestern Railroad (\$220).

Continued on Page 17



Some of the scarce early lanterns in the sale: Taylor Manufacturing "Yankee" model with cut Eastern RR globe (\$550), brass fixed globe with ornate cut "J Roach" globe (\$1100), electrified but cast Atlantic & St. Lawrence by NE Glass (\$350).



This Maine Central RR 5 1/2" bread plate by Onondaga Pottery (Syracuse) in the Kennebec pattern is somewhat scarce, so it still brought \$275 despite condition issues.

A \$130 bid took home this Pittsburgh & Lake Erie Railroad nickel plated & enameled police badge number "7".

Continued on Page 18



A \$190 bid was needed to purchase this nice Seaboard Air Line "Detective" badge with the "Heart of the South" logo.



Thompson lanterns are still popular with New England collectors, with this example from the New Haven with a cracked cast globe selling for a high bid of \$750.



A ticket validator die from the Maine Central Railroad station at Lewiston, Maine sold for a high bid of \$170.



A baggage tag made by Robbins for the Adirondack narrow gauge Chateaugay Railroad sold for a \$210 high bid.



More of the unusual switch keys in the sale: Monongahela Railway Company (\$230), Wabash Railroad (WRR) by MM Buck (\$220), and Fall Brook Coal Company (\$90).

Continued on Page 19



A Brakeman cap badge from the "Big Four" of the New York Central Lines went to a new home for a \$100 high bid.



A triple marked Fitchburg brasstop bellbottom by Steam Gauge & Lantern sold for a reasonable \$600.



An unusual baggage tag from Blue Mountain Lake in the Adirondacks, on the route of Theodore Roosevelt's midnight ride to North Creek, NY sold for \$170.



Rutland Railroad memorabilia is always popular, with this dater die from Bangor, NY on the Ogdensburg & Lake Champlain division of the line selling for a \$350 bid.



A \$170 bid was needed to purchase this pre-1878 Erie Railway baggage tag from Canaseraga, NY, without hallmark but of the style of John Robbins of Boston, MA.

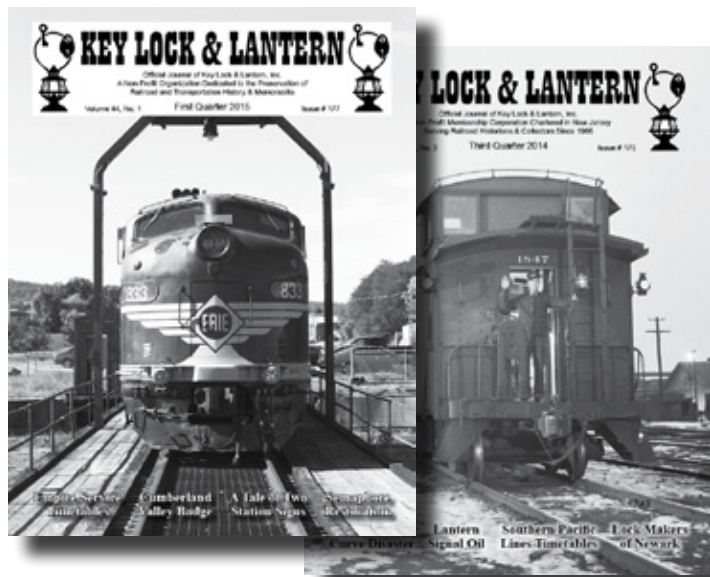
Key, Lock & Lantern Membership Renewal Forms Going Out in Magazine Issue #178

Return Dues Promptly or Renew Online for Access to Upcoming Members-Only Content on KL&L Website

Issue #178 of the *Key, Lock & Lantern* magazine is in the final stages of production, and will soon be mailed to KL&L members. This is the last issue for the 2014-2015 membership year, and dues for the 2015-2016 year are now due. Please note that if you joined as a new member within the last month or two (or if you renewed in advance), your dues may have already been applied to the current year. The mailing label on your magazine envelope shows the last issue that you are scheduled to receive. If it shows #178, you are due to renew; if it shows #182, then you do not need to renew. If you threw out the envelope and dumped rags with brass polish on top of it already, contact Marie Brainard at j944wb@aol.com for your current status.

Don't forget that anyone who wants to receive member rates for Key, Lock & Lantern Convention registration must renew their membership (or join) by June 1st. Convenient online payment via Paypal is available at www.klnl.org, and a printable membership form is also included at the end of this newsletter. There is no need to wait until you receive the form with your magazine. A membership renewal button is included on the online convention registration page, as well.

Another reason to renew early is that new "members-only" content will soon be added to the KL&L website. The first online resource that will be available to KL&L members will be digital copies of recent magazines. Initially, the past five years of the *Key, Lock & Lantern* magazine will be archived on the website in PDF format, for online viewing



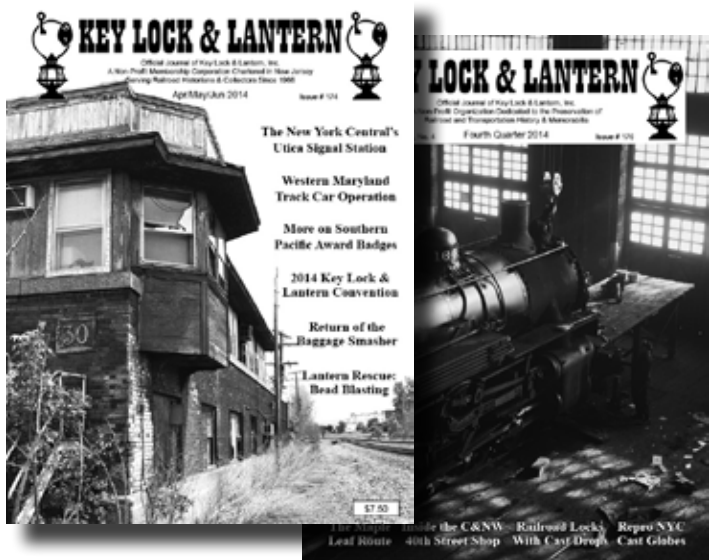
Renew your KL&L Membership early for access to digital copies of recent KL&L magazines, starting on May 15th.

or downloading. Current year issues will be added at the end of each membership year. Over time, older issues will be scanned, converted to PDF format, and uploaded to the website. Other digital resources are also slated for a future online library that will be accessible to KL&L members.

It is planned for the members-only content to go "live" on May 15th. On that date, members who have submitted their dues renewals for the 2015-2016 year will receive sign-in information and passwords to access the restricted areas of the website. After that, the database will be updated and passwords sent out every three weeks (we would like to be able to handle new passwords as membership renewals are received, but as a volunteer organization, we have limited resources). If you would like access on May 15th, please be certain to send in your membership form or renew online prior to that date.

Key, Lock & Lantern is excited to make recent issues of the magazine available for members to download, and to begin developing a digital archive of past issues. Many members have requested electronic copies of our publications in recent months, and we are pleased to start this project. Of course, the printed version of the magazine will continue to be sent to current members via mail, as it always has.

So why wait? Go online and renew your membership (or join, if you are not a current member), or print and mail in your membership form today. Get onboard for another year!



Past issues of the Key, Lock & Lantern magazine will soon be available to current members on the KL&L website.

California State Railroad Museum 2016 Excursion Season Opens in Sacramento

Interested in riding the rails along the Sacramento River? Or maybe exploring the alluring underground is more your style. Either way, Old Sacramento State Historic Park has just the ticket with history-rich weekend excursion train rides and crowd-favorite Old Sacramento Underground Tours resuming on April 2 & 3, 2016.

California State Parks and the California State Railroad Museum are proud to announce the opening of the 33rd consecutive season of weekend excursion trains on the Sacramento Southern Railroad on April 2nd & 3rd and continuing through September of 2016. Each weekend, excursion train ride guests can enjoy train rides pulled by either vintage steam locomotive Granite Rock 10 (that returned to service in 2015 after a major restoration effort) or historic diesel locomotives on periodic weekends.

Diesel or steam, excursion train ride guests delight in the sights, smells and sounds of an authentic, historic locomotive as it rolls along the levees of the Sacramento River for a



six-mile, 45-minute roundtrip excursion. Appealing to all ages, the experience offers guests the chance to enjoy train travel from an earlier era. The train features a combination of vintage closed coaches with comfortable seats, open-air “gondolas” with bench style seating or VIP train ride experiences onboard one of three of the California State Railroad Museum’s first class cars (depending on the weekend): the El Dorado lounge observation car, the Audubon dining car or the French Quarter lounge car from the 1950s that served the famed Southern Pacific “Sunset Limited” service.

In addition, as an expansion of the well-established weekday train ride program for local school groups, California State Parks and the California State Railroad Museum are once again offering excursion train rides to the general public on

certain Tuesdays in Spring 2016. Tuesday Train Rides are available on the following dates: April 5, 12, 19 & 26 and May 3 & 10. Two train ride times will be available at 11 a.m. and 1 p.m. on the scheduled Tuesdays when the trains are running.

Excursion train ride tickets are available to book online in advance at www.csrmf.org or can be purchased in-person starting at 10:30 a.m. the day of the train ride (based on availability) at the Central Pacific Railroad Depot ticket office located on Front Street between J and K Streets. Excursion trains depart from the Central Pacific Railroad Freight Depot on-the-hour from 11 a.m. to 4 p.m. on the weekends the trains are running. *News & photos courtesy of the California State Railroad Museum.*

Railroad Museums & Historical Societies

Send in news & photos to

KEY LOCK & LANTERN

Reach 750+ readers with news about

**your special events, programs,
conventions and new exhibits**

E-mail: transportsim@aol.com

Railroad Event Calendar

Continued from Page 2

- Apr 16-17** **Calgary, AB** - Super Train Railroad Show. Genesis Centre.
Info: www.supertrain.ca.
- Apr 16** **Columbus, OH** - Buckeye Railroadiana Show. Ohio Expo Center.
Info: www.gserr.com.
- Apr 21-26** **St. Louis, MO** - Katy Railroad Historical Society Convention.
Info: www.katyrailroad.org.
- Apr 23** **Brookline, NH** - Railroadiana Consignment Auction. Brookline Auction Gallery.
Info: www.tagtown.net.
- Apr 23** **Clarks Mills, PA** - Railroadiana Estate Auction Simonetta Auctions. www.auctionzip.com/PA-Auctioneers/414312.html
- Apr 24** **Catalog Auction** - Bidding closes for Golden Spike catalog auction.
Info: www.gserr.com.
- Apr 30** **Chatham, NY** - Rutland Railroad Historical Society Convention.
Info: www.rutlandrr.org.
- May** **Catalog Auction** - Railroad Memories online & catalog auction. Closing date TBA.
Info: www.railroadmemories.com.
- May 12-15** **Durand, MI** - Durand Railroad Days. Various locations around town.
Info: www.durandrailroaddays.com.
- May 13-15** **Itasca, IL** - New York Central Historical Society Convention.
Info: <http://nycshs.org>.
- May 19-21** **Camp Hill, PA** - Pennsylvania Railroad Tech & Historical Society Meeting.
Info: www.prrths.com.
- May 19-22** **Pikeville, KY** - Norfolk & Western Historical Society Annual Convention.
Info: www.nwhs.org.
- May 21** **Albuquerque, NM** - Albuquerque Rail Fair. New Mexico State Fairgrounds.
Info: www.gserr.com.
- May 21** **Chester, MA** - Chester On Track Festival. Chester Railway Museum.
Info: www.chesterrailwaystation.net.
- May 25-29** **Moscow, ID** - Railway & Locomotive Historical Society Convention.
Info: www.rlhs.org.
- May 27-29** **Parsons, KS** - Katy Days Celebration with activities including railroad vendors.
Info: <http://www.katydays.com>.
- Jun 3-5** **Utica, NY** - Key, Lock & Lantern Convention. Railroad History Expo & Meeting
Info: www.klnl.org.
- Jun 4-5** **Tampa, FL** - Railroad Show. Florida State Fairgrounds.
Info: www.gserr.com.
- Jun 12** **St. Charles, IL** - Kane County Railroadiana Show. Kane County Fairgrounds.
Info: www.rrshows.com.
- Jun 18-19** **Waupaca, WI** - Annual Strawberry Fest Railroad Show & other events.
Info: www.wamrltd.com.

Send listings to: transportsim@aol.com

There is no charge for calendar listings. Train shows must include dealers of authentic railroad memorabilia or related material, and auctions must include at least 20 lots of railroadiana. Other events must be directly related to railroad history (special exhibitions, lecture programs, conventions, limited excursions, etc.). Regular monthly group meetings, model train meets & scheduled tourist train trips are not eligible, unless related to a special event. Events are listed space permitting, at the editor's discretion. Listings are subject to error or change. Always check show web sites before traveling.

Visit www.klnl.org for Updates

KEY LOCK & LANTERN

Can Help Promote Your

Auction, Show or Event

With Advertising in KL&L Publications

850+ Facebook Members

1200 Monthly Web Visitors

750+ Newsletter Readers

Contact KL&L Editor Dave Hamilton at
transportsim@aol.com

The New York-Pennsylvania COLLECTOR

Living with Antiques, Art & Americana

A Monthly Publication Featuring News & Articles About Antique Collecting & History



Auction & Show Listings
Club Meetings & Events
Identification & Fakes
Antique Restoration Tips
Museums & Historic Sites
Dealer & Flea Market Ads

Subscription & Advertising Information:
1-800-518-0875 www.nypa-collector.com

WANT ADS & ANNOUNCEMENTS

Want Ads are FREE to Key Lock & Lantern members on a space available basis, in the KL&L Magazine and the KL&L News. E-mail to j944wb@aol.com or mail to: John & Marie Brainard, 35 Nordhoff Place, Englewood, NJ 07631

For Sale

For Sale: Railroad Artifacts & Memorabilia: Everything from keys, locks & hardware to china, paper, and more. Jane Silvernail. Website: <http://timestreasures.rubylane.com> or contact by e-mail at timestreasures@sohotechical.com.

For Sale: Switch Lamps, Markers & Parts. Website: JerrysRRStuff.com. Phone: 206-778-0386. E-mail: jerry@JerrysRRStuff.com.

For Sale: CB&Q RR Special Police badge and CB&Q RR Special Watchman badge. Will consider trade for other RR police badges. Dan Pottebaum. windsor5207@yahoo.com or call 712-274-8847.

For Sale: Keys, Locks, Lanterns, Ephemera, etc. Mostly NE including ME narrow gauge. Jerry Devos, PO Box 376, Towaco, NJ 07082. 862-222-5264. jdevos99@aol.com.

For Sale: Original steam, electric & diesel locomotive builders plates. Currently wide range of N&W diesel plates in stock. E-mail for current list: rjmuldowney@comcast.net or call Ron Muldowney at 609-397-0293.

For Sale: Old (1850's-1890's) New England railroad paper items. Lots of old name railroads, also Rutland, Central Vermont, Housatonic, Fitchburg, etc. Good to excellent condition. Contact Chuck Hall at 315-824-1674.

For Sale: *Railroadiana II: The Official Price Guide for the Year 2011 and Beyond*. Softcover, \$65 + shipping. Railroad Memories. 303-759-1290. www.railroadmemories.com.

For Sale: Dressel switch lamp, complete, excellent condition, no RR markings, \$250 + shipping. Also have 6-chime Central Vermont whistle & Maine Central counter-top ticket case. Richard Gibbons, 1050 East Brigham Rd, Unit 59, Saint George, UT 84790. gibbons@infowest.com. (435)-634-8205.

For Sale: Disposing of late husband's collection of over 250 railroad lanterns. For a complete list with prices, e-mail: lotusbuzz@gmail.com.

For Sale: Railroad locks, keys and more for sale. For more information, visit website at www.angelfire.com/biz/toysoldierhq/Railroad.html. Kent Sprecher back in the hobby!

Wanted

Wanted: Oil type cab lamp with shade. Contact Aubrey Keller at akeller@utm.edu or call 731-587-4723.

Wanted: New York Westchester & Boston Ry Signal lock and other hard to find signal locks such as Long Island and any I do not have. Contact Jeff Irvin 2524 Big Bear Ln. Indianapolis, IN 46217 - j.irvin@sbc.global.net or 317-882-2336

Wanted: Switch keys from the L&HR, WVRR, SRR, NY&ERR. Stock Certificates: Wawayanda RR, Mine Hill RR, Pequest & Walkill RR, and Southfield Branch RR. Phil Simms, 8 Still Waters Drive, Campbell Hall, NY, 10916. Call 845-427-5051.

Wanted: Looking for small hardware items from the Northhampton & Bath RR such as keys, badges, brass time/tool checks or any other significant small item. Have some interesting items to trade from US Steel roads. Contact Jeff Wolfe at lobowolf@aol.com.

Wanted: Memorabilia from the NY & Greenwood Lake Ry. Jerry Devos, PO Box 376, Towaco, NJ 07082. 862-222-5264. jdevos99@aol.com.

Wanted: Factory marked inspector lamps. Must be complete and in reasonably good condition. Marked globe a plus. Need RDG C&O B&O GCT SOURY (or S RY) Erie Aeme model plus others I may not be aware of - Contact Larry Davis, 5110 Hollywood Ave; Shreveport, LA 71109. Phone: 318-469-7825.

Wanted: Pennsylvania RR Macbeth #220 pearl glass globes with straight letters 3/4" in height, "PRR" in rectangle. Need clear and red globes. Have traders or cash. Joel Shaw, 31 Sandle Drive, Fairport, NY 14450. Phone: 585-385-3776.

Wanted: Delaware Lackawanna & Western keys & locks. Contact Bill Roberts. 8812 Mourning Dove Court, Gaithersburg, MD 20874. E-mail: whadynrob@aol.com or call 301-977-3025.

Wanted: Keys, locks, lanterns, China, builder plates from Oliver Iron Mining and Duluth area railroads. Email: thornton454@hotmail.com

Wanted: Keys, locks, lanterns, fly fishing leader boxes, passes, buttons & other from the Denver, South Park & Pacific Ry - Denver, Leadville & Gunnison Ry - Union Pacific Denver & Gulf - Colorado & Southern Ry. Leonard Walmsley, 11044 Claire Circle, Northglenn, CO, 80234 or call 303-429-8674.

Wanted: Switch key for the PCRY (Pacific Coast Railway), not PCRR (Penn Central), probably made by Fraim. Contact Steve Mott at 805-544-5339 or by e-mail at sjmott2359@sbcglobal.net.

Wanted: Brass burner for a Dressel double wire tall globe railroad lantern & twist off font with burner for a Dietz 39 Vulcan wire frame. Also buying Western Maryland locks, keys, lanterns & globes, and C&PRR items. Joseph G. Hauger, 401 2nd St., Terra Alta, WV, 26764. E-mail address: whiteoak4@frontier.com or phone 304-789-2229.

Wanted

Wanted: Lanterns, globes, locks, keys, hat badges, RR PD or RR Fire Dept items, Long Island RR & Staten Island Rapid Transit. Bob Myers, 36 Pine Hollow Lane, Greenlawn, NY 11740. 631-757-9540. robertrail@yahoo.com.

Wanted: Items from the Surry, Sussex & Southampton Ry. Jerry Rakes, PO Box 384, Tappahannock, Va 22560.

Wanted: B&O Yale signal locks, cast B&O or Y&T Butler, Charleston, Delphos, Ohio River & Shenandoah divisions. David W. Robinson. dwrbo@aol.com. 540-820-8998.

Wanted: Factory marked ICRR tall lanterns by Defiance, Universal Spinning & Stamping, Prier Brass Co. Globe not important. Good condition & complete. Larry Davis, 5110 Hollywood Ave, Shreveport, LA 71109. 318-469-7825.

Wanted: Railroadiana from Huntington & Broad Top Mountain RR (and Coal Co.). PA shortline 1850's-1950's. John Houpp - call 484-268-6698 or e-mail jdhoup@hotmail.com.

Wanted: Cast brass fancy back railroad switch locks. Instant cash paid for any lock not already in my collection. I also have a list of approximately 125 rare cast switch locks for sale or trade. Contact Warren at 239-440-4254 (new number) or warrennyergesjr@hotmail.com.

Wanted: Lanterns, locks, timetables & passes of all types from Southern Ry, Richmond & Danville, East Tennessee Virginia & Georgia Ry, Washington & Old Dominion, Washington Ohio & Western, Washington & Ohio, Alexandria Loudoun & Hampshire. Contact Andrew Ramsay at aramsay@ieee.org.

Wanted: Diesel locomotive builders plates from the following: Canadian National / Northern Alberta Ry London built or Pointe St. Charles rebuilt GMD-1; Canadian Pacific Montreal Locomotive Works RS-18; former Pacific Great Eastern / British Columbia / BC Rail locomotives; former Northern Alberta Ry / Canadian National GP-9; any EMD NW-5 plate. Contact Corey Panchyshyn at bcr_766@hotmail.com.

Wanted: Diesel builders plates, especially EL and other northeastern US railroads. Have plates to trade. E-mail: RBombel@aol.com.

Wanted: Railroad Horse Car Bells. Will buy one or an entire collection, or have bells to trade. Contact Roger Plaquet at rplaquet@ciaccess.com or call 519-354-4538.

Wanted: Canadian switch keys. Looking for keys from Canadian roads for my collection and display in a small museum. Will purchase or have some U.S. keys for trade. Contact Brad at alco1310@sympatico.ca

Wanted: LV, D&H, CV switch, signal, mechanical, motive power dept. lock sets. Uniform cap badges. Anything northeast. Chuck Hall. 315-824-1674. E-mail: mollymussonhall@yahoo.com.

Wanted: Amber (yellow) glass 6.5" diameter lens for a Atlantic City RR (Phila. & Reading) Semaphore used about 1890. This is slightly convex un-fluted that fit in the moving three color frame of a semaphore signal. Also need design of fish tail wood blade to replace my mistaken pointed wood blade. W. G. Cook PRR6986@Yahoo.com. 518-784-2137 May be interested in finding a proper home for entire signal including CNJ light unit to power it.

Wanted: Switch keys from The LH&R, NYS&W, M&E, L&NE, NY&GL, Wharton & Northern, Mine Hill RR and other NJ short lines. Premium price paid for NYS&W "fancy back" cast heart shaped lock. Chip Greiner, P.O. Box 125, Bogota, NJ 07603 email rbbadges@aol.com.

Wanted: Railroad Police Badges and Railroad Police artifacts such as police office signs, old police department photos, early uniforms and patches, etc. Need NYO&W RY Police "Lieutenant" rank badge and will pay premium price or trade. Chip Greiner, P.O. Box 125, Bogota, NJ 07693. Email rbbadges@aol.com.

Wanted: Coat button from West Penn Railways (W.P. Ry), southwest Pennsylvania trolley system. Will pay good or trade other trolley line buttons. Also, early PRR buttons with fancy letters. Jim Chew, 900 N. 4th Street, Jeannette, PA 15644, (724) 523-6889.

Wanted: Photo of NY State Railways Syracuse Lines car #1024. Also any photos of Syracuse trolleys on Irving Ave and around Syracuse University. Also, globe for an SG&L Lake & River lantern, large 6x6 "government" style or "No.7" style. Dave Hamilton. transportsim@aol.com. 518-439-8392.

For Trade

For Trade: LC&N Co Casey lantern, 6" Penna Co globe, D&RGRR cast lock by Dayton, SRRR, GF&ARY, C&A Ry tapered keys, T&OC dessert knife by R&B. I collect southern lower Michigan and also want 6" colored globes. Walter Sulowski at walter-sulowski@msn.com or 313-295-7306.

Want Your Message to Get More Attention?
Upgrade to a Display Ad for as little as \$15
Contact Dave Hamilton: transportsim@aol.com

KEY LOCK & LANTERN

Index on Computer CD

Index of all KL&L Magazines from Issue #1 through Issue #151 in searchable Acrobat (PDF) format. \$7.95 postpaid. Contact:

Marie Brainard
35 Nordhoff Place
Englewood, NJ 07631-4810

Membership Brochures

Are Available in PDF Format for Printing & Distribution at Railroadiana Shows, Historical Museums, Railroad Club Meetings & Other Events

Download the Current Version at www.klnl.org



All submissions for the KL&L magazine, news items for the digital KL&L News & general inquiries should be sent to:

KL&L President & Editor
David Hamilton
244 Elm Ave
Delmar, NY 12054
E-mail: transportsim@aol.com

Send membership applications, dues payments, address changes & want ads to:

KL&L Chairman John Brainard & VP-Membership Marie Brainard
35 Nordhoff Place
Englewood, NJ 07631
E-mail: j944wb@aol.com

Join or Renew Your
KEY LOCK & LANTERN
Membership Online at
www.klnl.org

KL&L Membership Form (July 2015 - June 2016 Membership Year)

Please make check or money order payable to Key, Lock & Lantern, Inc. and forward to: Marie Brainard, KL&L Membership, 35 Nordhoff Place, Englewood, NJ 07631-4810

Name _____

Representing (business or museum, if applicable) _____

Address _____

City _____ State/Prov _____ Zip/Mail Code _____

Phone _____ E-mail _____

Basic membership at \$30 per year (1st Class mailing in USA) or \$40 per year (non-USA).....\$ _____

Contributing membership at \$35 per year, to help support KL&L(1st Class mailing in USA)..... \$ _____

Additional family members at \$4 per person (only one magazine is sent per family).....\$ _____

Additional Donation.....\$ _____

Enclosed is my check / money order payable to Key Lock & Lantern, Inc. for.....\$ _____

Membership in KL&L includes 4 issues of the magazine, and the annual membership period begins in July of each year. New members joining before April will receive all previously published magazines for the year, and will be due for renewal in July. New members joining in April, May or June will have their dues applied to the next membership period, beginning with the Jul/Aug/Sep issue, unless otherwise requested.

KEY LOCK & LANTERN 44th ANNUAL CONVENTION

**2016 RAILROAD
HISTORY EXPOSITION**

**Railroad History Exhibits - Banquet
Collectors Market - Programs - Excursion**

June 4-5, 2016

**Hotel Utica
and
Union Station
Utica, NY**



**Railroad History Exposition &
Railroadiana Show & Sale
Hotel Utica 10am-2pm June 4th
Banquet & Railroad Programs
Trackside Restaurant - Utica
Union Station 5PM June 4th
Adirondack Scenic Excursion
Utica to Big Moose June 5th**

***All Railroad History Buffs & Collectors are Invited to Attend.
More Details, Ticket Sales, Hotel & Vendor Info are Available
on the Key Lock & Lantern Website at www.klnl.org.***

**Visit the Key, Lock & Lantern Website at
www.klnl.org and on Facebook**

44TH ANNUAL KEY LOCK & LANTERN CONVENTION

June 3-5, 2016, Utica, NY

KL&L Member Registration Form

Please Note - You Must be Current on Your Dues for 2015-2016 to Register as a KL&L Member

Convention events will take place at the historic Hotel Utica & Utica Union Station, located about 1/4 mile apart in downtown Utica, NY. Activities begin with check-in at the Hotel Utica on Friday at 4:00PM. There will be a KL&L registration table where members can check in for evening room hopping & early trading. Set-up for the Railroad History Exposition in the Hotel Utica Saranac Room & Mezzanine begins at 8:00AM on Saturday, and doors open to non-members at 10:00AM. The KL&L membership meeting will be held at 11:00AM, followed by the fundraiser auction. The show closes at 2:00PM. At 5:00PM, a banquet and railroad history programs will be held at the Trackside Restaurant in Utica Union Station. On Sunday, boarding begins at 9:15AM for an excursion on the Adirondack Scenic Railroad from Utica Union Station to Big Moose, returning at 5:30PM. Several lunch options and photo opportunities will be available, along with plenty of time to visit with fellow railroad buffs. The Hotel Utica room rate for the weekend will be \$83.00 + tax per night (mention the convention when you call for reservations so you are sure to get the special rate). Please make your reservations early. The Hotel Utica is located at 102 Lafayette Street, Utica, NY, 13502, Phone # 315-724-7829. Directions are as follows: From New York State Thruway: Take Exit 31, after toll booth continue straight towards downtown Utica, right onto Genesee Street south for approximately 1.5 miles, right on Lafayette Street, one block on right. The Best Western Gateway Adirondack Inn, located nearby at 175 North Genesee Street, is also offering a special rate of \$95.00 + tax per night. Call the hotel at 315-732-4121 and ask for the Key, Lock & Lantern rate. You may register for the various convention events online at www.klnl.org, or use the attached form. Visit the KL&L website for more details.

Name: _____

Wife/Family Member: _____

Address: _____

Phone: _____

E-mail: _____

Admission-Only Advance Registration Ticket (may also be used for guests)....._____ x \$5 each = _____

Exhibit/Sales Tables (includes 1 member & 1 family member admission)....._____ x \$20 each = _____

Saturday Night Banquet Ticket - Trackside Restaurant Buffet....._____ x \$25 each = _____

Coach Train Ticket Only (snacks available on train)....._____ x \$38 each = _____

Coach Train Ticket w/box lunch served on train....._____ x \$50 each = _____

Coach Train Ticket w/buffet lunch at Big Moose Station....._____ x \$53 each = _____

First Class Train Ticket w/onboard snacks & buffet lunch....._____ x \$149 each = _____

*** Please Note: First Class & Buffet Lunch Train Ticket Seating is Very Limited - Please call Dave Hamilton at 518-439-8392 to confirm availability before sending payment, or register online.*****

Please make checks or money orders payable to **Key, Lock & Lantern, Inc.** and mail to: **John Brainard, 35 Nordhoff Place, Englewood, NJ 07631-4810.** If you have any questions, email John Brainard at j944wb@aol.com or call 201-569-9758 between 7 and 9 pm DST any evening, or Dave Hamilton at transportsim@aol.com or 518-439-8392.

44TH ANNUAL KEY LOCK & LANTERN CONVENTION RAILROAD HISTORY EXPOSITION

Saturday, June 4, 2016, Utica, NY

Vendor Registration Form

The Key, Lock & Lantern Convention is one of the oldest and most well-respected events geared specifically to railroad historians and collectors of railroad memorabilia. The Railroad History Exposition, while open to the public, is not a typical "train show," but a gathering of avid railroad historians and collectors. While it is a small event, with an average attendance of around 100 people and 60 exhibit booths, KL&L Convention attendees are among the most serious buyers of authentic railroad memorabilia, books, and other products related to railroad history. If you are a dealer of railroadiana or history-related books & products, this show is for you! The big train shows may attract several thousand visitors, but how many of them are families who are simply there to look at the model train displays? The people that you make sales to at the train shows are the serious railroad buffs who will be attending the KL&L Convention.

In the past, membership in Key, Lock & Lantern was required in order to set up a table at the convention. This year, we are opening the Railroad History Exposition to all vendors of railroadiana, books, historical videos, collecting supplies, and related products. Also, railroad historical societies, tourist railroads, and museums are invited to exhibit. As a smaller show, the KL&L Convention also provides an excellent opportunity for networking with fellow railroad history buffs and collectors. Everyone is also invited to join the members of KL&L for a Saturday evening banquet at the Tracksides Restaurant in Utica Union Station.

The KL&L Railroad History Exposition will be held at the historic Hotel Utica at 102 Lafayette Street in downtown Utica, NY. The show will take place in the Saranac Room and Mezzanine, on Saturday, June 4th, with setup beginning at 8:00AM and the doors opening to non-members at 10:00AM. Exhibits close at 2:00PM, and the banquet at Utica Union Station begins at 5:00PM. As part of the convention activities, a railfan excursion on the Adirondack Scenic RR will depart from Union Station at 9:45AM on Sunday, for a round trip to Big Moose. More information is available at www.klnl.org.

Exhibit/Sales tables are 3x7 feet, and cost \$30 each. Vendors are entitled to one admission badge for each table. To maintain the traditional spirit and atmosphere of the show, sales are limited to authentic railroadiana, parts, collecting supplies, new & used books, photos & videos, and other products directly related to railroad history. Exhibits must be related to railroad history, with displays of railroadiana, or may promote the activities of historical societies, museums, or historic railroad operations. Model trains or toys are not permitted, except when an integral part of a railroad history display. Reproductions of railroad artifacts are discouraged, and must be identified in some way, and fakes produced with an intent to deceive are prohibited. To reserve a table, visit the Key, Lock & Lantern website at www.klnl.org, or complete the attached form & mail by May 15, 2016.

Name _____

Company _____

Address _____

Phone _____

E-mail _____

of Tables: _____ x \$30 each = _____ Banquet Tickets _____ x \$25 each = _____ Total _____

Please make checks or money orders payable to **Key, Lock & Lantern, Inc.** and mail to: **John Brainard, 35 Nordhoff Place, Englewood, NJ 07631-4810**. If you have any questions, email John Brainard at j944wb@aol.com or call 201-569-9758 between 7 and 9 pm DST any evening, or Dave Hamilton at transportsim@aol.com or 518-439-8392.

KEY LOCK & LANTERN 44th ANNUAL CONVENTION Adirondack Scenic RR Railfan Charter Trip Utica to Big Moose, NY

June 5, 2016

Boarding at Utica 9:15AM

Lunch at Big Moose 12:15PM

Arrival Back at Utica 5:30PM

Photo Stops / Runbys
Coach & First Class Seats
Visit www.klnl.org For
More Information



This special railfan charter will operate through remote and scenic areas of the Adirondack wilderness, using historic passenger equipment & locomotives. Several photo opportunities are planned during the trip, and a box lunch will be available at Big Moose. Regular coach tickets are available on the KL&L Website at www.klnl.org and at the KL&L Railroad History Expo, June 4, 10AM-2PM at the Hotel Utica or use the order form below. First Class tickets in private lounge cars and buffet lunch tickets at Big Moose Station may be purchased online.

Name: _____

Address: _____

Phone: _____

E-mail: _____

Coach Train Ticket Only (snacks available on train)..... x \$45 each = _____

Coach Train Ticket w/box lunch served on train..... x \$57 each = _____

Please make check or money order payable to **Key, Lock & Lantern, Inc.** and mail to: **John Brainard, 35 Nordhoff Place, Englewood, NJ 07631-4810.** For credit card or Paypal payment, order online at www.klnl.org. If you have any questions, email Dave Hamilton at transportsim@aol.com or call 518-439-8392. Tickets will be available for pickup at the KL&L Convention on June 4th or at the Adirondack Scenic Ticket office at 9AM on June 5th.