



# KEY LOCK & LANTERN NEWS



Sep/Oct 2010

Issue No.4

## Union Pacific RR Museum Sponsors Excursion

It is the type of event that most railroad historical society members only dream of: a mainline steam train excursion sponsored by their museum. With many Class I railroads (and even regional lines) discouraging special moves, the “good old days” of mainline steam that we enjoyed in years past are largely over. Fortunately, the Union Pacific Railroad recognizes the importance of its history, and not only supports the Union Pacific Railroad Museum in Council Bluffs, Iowa, but it is cooperating with the organization in the operation of a public excursion this coming November.

Following a tour of Missouri during the month of October, Union Pacific locomotive 844, the last steam engine built for the railroad, is scheduled to head to Iowa for the museum’s 50th Anniversary Excursion. Departing from Council Bluffs on November 13th, the train will operate to North Platte, NE,



*Built in 1944, and semi-retired to excursion service in 1960, No. 844 is scheduled to pull its “50th Anniversary Excursion” for the Union Pacific Museum. UP photos.*



*Luxury travel aboard Union Pacific’s “Legacy” fleet is available to the public on the 50th Anniversary Excursion, although tickets cost up to \$1000. Union Pacific photo.*

Union Pacific Railroad Corporation. As a cooperative effort between the city, the railroad, and a strong volunteer organization, the museum preserves memorabilia from the railroad that opened the American west.

The museum is open from 10am to 4pm, except Sundays and Mondays. Tickets for the 50th Anniversary Excursion are currently sold out, but there is a waiting list for additional openings. For more information, visit the Union Pacific Railroad Museum website at [www.uprrmuseum.org](http://www.uprrmuseum.org). Additional details about the Union Pacific steam program, including updates on the movements of its locomotives, are available on the UP website at [www.up.com](http://www.up.com).

and into Bailey Yard. Diesels will haul the train back, for a total trip of 15 hours. Accommodations range from seats in 1950’s coaches to the luxury Dome/Lounge/Observation car from the City of San Francisco. All tickets include lunch and dinner. Prices range from \$200 for coach seats to \$1000 for the dome lounge, with several different options in between.

The Union Pacific Railroad Museum enjoys this friendly relationship with the railroad through its status as caretaker of the UP’s vast historical archives. Located in the former Carnegie Library in Council Bluffs, the museum is the repository for documents, photos, and artifacts from the



## KL&L: More Than Just A Magazine

When Key, Lock & Lantern was started by Paul Pietrak in 1966, it was simply a four page, photocopied newsletter, with information and want ads for collectors of railroadiana. It didn't take long for the newsletter to grow into a complete magazine, with high quality photos and in-depth articles. KL&L soon evolved into an organization for collectors of railroad memorabilia, with the magazine still serving as the primary means for sharing information. Almost forty-five years later, KL&L is still going strong, even in this age of instant digital communication.

While exchanging information (and trading memorabilia) over the internet has certainly become an important part of the hobby, there is something about being involved with an organization such as KL&L that never goes out of style. At the most recent KL&L and NAOTC conventions, I was able to meet several fellow collectors with whom I had previously only communicated with by e-mail. It was enjoyable to visit with those people in person, and that was made possible by membership in these two groups.

While the Key, Lock & Lantern magazine remains the most tangible benefit of membership in KL&L, it is perhaps the other less visible aspects that have made our organization a success. I would like to invite all of our members to enjoy these other benefits, and become more involved with KL&L. Make plans to participate in the convention next year. Stop by and visit with other KL&L members at Gaithersburg. Send in some magazine contributions, or simply drop us an e-mail to let us know your ideas for the organization. Key, Lock & Lantern is more than just a magazine subscription, so let's all get on board.

*Dave Hamilton*

KL&L President & Editor

Visit Key, Lock & Lantern Online:  
[www.klnl.org](http://www.klnl.org)



Help Promote KL&L  
Become a fan on

facebook

KL&L News is published bi-monthly for the members of Key, Lock & Lantern, a non-profit organization of railroadiana collectors.

KL&L members may forward this newsletter to other interested collectors, but it may not otherwise be copied or redistributed without the permission of the KL&L Board of Trustees.

Send news items to Dave Hamilton at:  
[transportsim@aol.com](mailto:transportsim@aol.com)

## Railrodiana Show & Auction Calendar



- Sep 25** **Phoenixville, PA** – Railroadiana Auction. Ted Maurer, Auctioneer. 10am. Ridge Fire Hall. Info: [www.maurerail.com](http://www.maurerail.com).
- Sep 26** **Allentown, PA** – Lehigh Valley Chapter Train Show. Dieruff High School. 10am-4pm. Info: e-mail [trolleys@ptd.net](mailto:trolleys@ptd.net).
- Oct 2-3** **Lone Jack, MO** - Railroadiana Auction. Sat 10am, Sun 11am. Dirk Soulis Auctions. Info: [www.dirksoulisauctions.com](http://www.dirksoulisauctions.com).
- Oct 2-3** **DeLand, FL** - 31st Annual Florida Rail Fair. Sat 9am-5pm, Sun 10am-3pm. Volusia County Fairgrounds. Info: [www.gserr.com](http://www.gserr.com).
- Oct 9** **Walnut Creek, CA** – San Francisco Bay Area Railroadiana, Mining & Western Artifacts Show & Sale. 9am-3pm. Walnut Creek Elk's Lodge. Info: [bj620@aol.com](mailto:bj620@aol.com).
- Oct 16** **Brookline, NH** - Railroadiana Consignment Auction. 10:30am. Brookline Auction Gallery. Info: [www.tagtown.net](http://www.tagtown.net).
- Oct 17** **St. Charles, IL** - 19th Annual Chicagoland Railroadiana Show & Sale. 10am-3pm. Kane County Fairgrounds. Info: [www.rrshows.com](http://www.rrshows.com).
- Oct 22-24** **Bakersfield, CA** - Golden Empire Train Show. Kern County Fairgrounds. Info: [www.ggshows.com](http://www.ggshows.com).
- Oct 23** **New Palestine, IN** - 30th Annual Crossroads of America Railroadiana Show. 9am-2pm. Ramada Inn. Info: [www.indyrrshow.com](http://www.indyrrshow.com).
- Oct 24** **Rochester, NH** - Railroadiana Auction. 10am. JW Auction Company, Rochester, NH. Info: [www.jwauctionco.com](http://www.jwauctionco.com)
- Nov 7** **Gaithersburg, MD** - 33rd Annual Railroadiana & Transportation Artifacts Show & Sale. Montgomery County Fairgrounds. 9am-4pm. Info: [www.gserr.com](http://www.gserr.com). Stop by and visit KL&L at the show.

*Continued on Page 7*

# Large Railroadiana Collections To Be Auctioned

After a relatively slow summer, several extensive collections of railroad memorabilia will be placed on the auction block during the next few weeks. From rare New England lanterns to unusual china from the Santa Fe, collectors of every type of railroadiana will no doubt find something of interest in the upcoming sales.

Following the successful auction of the Stich collection this past May, Dirk Soulis Auctions of Lone Jack, Mo will be selling railroadiana from the estate of Marvin D. Robertson. This collection has an emphasis on memorabilia from the Santa Fe, and includes hundreds of pieces of silver, china, and other dining car items.



*Santa Fe Conductor Hat & Badge from the Marvin D. Robertson Collection. Dirk Soulis Auctions Photo.*

Hardware, signs, fixtures, and Fred Harvey memorabilia round out the collection of this former railroad employee. The auction will be held on October 2nd & 3rd, at the Great Plains Gallery in Lone Jack, Mo. For more information, see the advertisement on page 4.



*Santa Fe Mimbreno China from the Marvin D. Robertson Collection. Dirk Soulis Auctions Photo.*

Additional items from the Alling and McFarlane collections are the highlights of another railroadiana consignment auction, managed by Scott Czaja, in Brookline, NH. Once again, a number of interesting lanterns will be sold, along with a variety of rare china patterns. Locks, keys, timetables,



*Santa Fe Railroad Handcar from the Marvin D. Robertson Collection. Dirk Soulis Auctions Photo.*

and some unusual items are also included in the sale. The previous sale, held this past spring, saw some high prices realized for certain rare items, and some bargains on others. This auction will be held on October 16th at the Brookline Auction Gallery, in Brookline, NH.



*Bangor & Aroostook Pass in the upcoming Brookline Railroadiana Auction. Photo Courtesy of Scott Czaja.*

Ted Maurer of Pottstown, Pa, who has primarily been holding toy train auctions in recent months, has a railroadiana auction on his schedule for September 25th. As usual, there will be a variety of hardware, paper, and books, mostly from railroads of the northeast. The Ridge Fire Hall, near Phoenixville, Pa is the location of Ted Maurer's auctions. JW Auctions, of Rochester, NH, also has an auction lined up for October 24th, with an online catalog expected to be available soon.



*CV Conductor Badge in the upcoming Brookline Railroadiana Auction. Photo Courtesy of Scott Czaja.*

*Continued on Page 6*

# Important Estate Auction The Marvin D. Robertson Collection

*Saturday, October 2nd at 10 a.m.*

*Sunday, October 3rd at 11 a.m.*

*Preview: Friday, noon to 7 p.m.*

*A single-owner estate auction filled with treasures from the Santa Fe and other lines.*

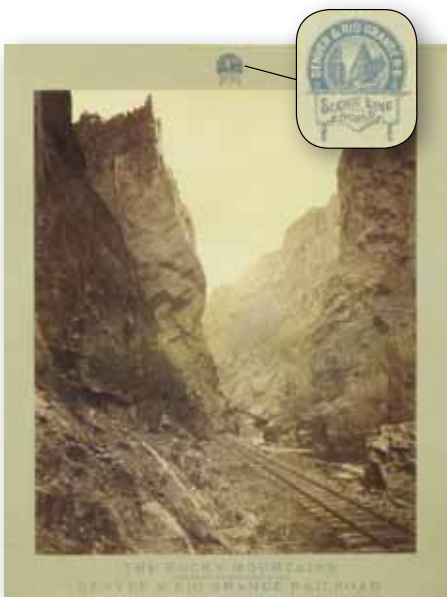
An exceptional collection of Railroad China that includes 100s of pieces in the Mimbreno Pattern, rare examples of Bleeding Blue along with Griffon and California Poppy patterns, plus early AT&SF Banner Glassware, unusual Dining Car Silver and more



There will also be choice Fred Harvey pieces, Great Signs, Passenger Car Furniture, Chico The Indian Boy items, Baggage and Coffin Carts, a Handcar marked Santa Fe, Badges, Uniforms, Cap Badges, Locomotive Bells, Depot Furniture and Fixtures, Lanterns, Passenger Car Lighting, Brass Shelving, rare Wax Seals dating back to Indian Territory period, Archives, Ephemera, and much more. This is a fine collection – don't miss it!



*The Marvin Robertson Collection of Lawrence, Kan.*



Note: Marvin D. Robertson is listed in the April, 1945 edition (page 34) of *THE SANTA FE MAGAZINE* as a Santa Fe employee serving in the Defense Forces of the United States.



*For more information on this auction, please contact:*

**DirkSoulis AUCTIONS**  
EXPECT GREAT THINGS.

529 West Lone Jack-Lee's Summit Road  
Lone Jack, MO 64070  
1.800.252.1501 or 816.697.3830  
E-mail: DirkSoulis@gmail.com  
www.DirkSoulisAuctions.com

# Key, Lock & Lantern Issue #159 Sent to Members

By the time this newsletter is distributed, Key, Lock & Lantern Issue #159 should be in the hands of all current members. This edition includes articles covering several different aspects of railroad history and collecting. A feature story on the Hoosac Tunnel describes the construction of this monumental work of civil engineering and explores some of the ghost stories that are associated with it. Of course, examples of railroadiana from the railroads that operated in and around the area are included in the article, along with a brief history of those lines.

Other features include our popular "Questions & Answers" column, with several answers to outstanding questions. The "General Stores Department" column returns in this issue, with another article on switch lamps from turn of the century

## The General Stores Department

### The Care of Switch Lamps by W.M. Camp

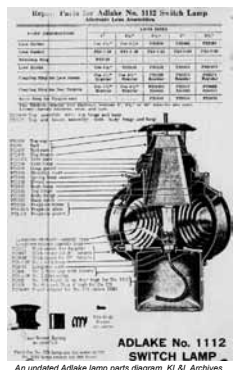
Reprinted from a chapter on switches and related appliances in the book *Noise on Track* Contractor & Maintenance, self-published by W.M. Camp in Chicago, Ill. in 1903.

All dirt, oil, and soot should be wiped from the lenses and other portions of the lamp daily, and the font should be emptied and rinsed as often as the oil in it becomes greasy or dirty. The wick should be trimmed by scraping off the burnt portion with the fingers or with a match stick, and not by cutting. While the lamp is not lighted, the wick should be turned down so that its top is within the tube to prevent overflowing of oil. The wick should be long enough to reach the bottom of the font and the latter should not be filled higher than a half inch below the top. The air vents of the burners should be kept open, and when the wick becomes clogged with refuse matter a new wick should be substituted. Trouble from clogging of the wicks is usually caused by dirty oil or oil of poor quality, the impurities in which are separated



An undated photo of a lamp maintainer, Contributor Larry Davis surmises that he may be on the Adirondack Road by the sootage process in the wick. After lighting a lamp it should be allowed to burn for a time and heat up the burner before the wick is finally adjusted. As the burner warms up the flame naturally increases in size, and the lamp should not be left until the wick is properly adjusted, otherwise the lamp may smoke, after a few minutes. In foggy weather it is customary to light switch lamps earlier than usual and permit them to burn later before taking down in the morning. Where switch lamps are numerous within carrying distance it is a good plan to take them all to some central point for cleaning, filling, and lighting before they are distributed in the evening. Light hand cars are much used for carrying switch lamps.

A convenient arrangement for carrying switch lamps by hand is to hang them on a pole and carry a pole-load in each hand. In order to load the poles to a balance at the middle, notches may be cut or nails driven into the top side of the pole to indicate regular spacing intervals. By means of a stout leather strap buckled to the poles and passed over one's shoulders a heavy load of lamps may be easily carried. If however, the switches are widely scattered, it is a waste of time to carry the lamps back and forth, and the best plan is to have a box under lock at each isolated switch and at each point where a few switches are grouped within convenient distance, so which the lamps may be taken to be cleaned and filled and sheltered during the daytime. If lard oil is used which tends to thicken in cold weather, it will save trouble to carry a can of warm oil from box to box and fill the lamps just before lighting them in the evening. The most trouble in this respect usually comes from the practice of filling the lamps in the morning, so that the oil remains in the cold lamps all day. If the oil is of fair quality and thin when the lamp is lighted the heat of the burner will usually prevent it from thickening. In putting up or taking down switch lamps, the track-walker or lamp tender should keep his greasy hands off the targets. To enable lamp tenders to clean lamps properly and keep them in neat condition they should be supplied with clean waste.



ADLAKE No. 1112 SWITCH LAMP.  
An undated Adlake lamp parts diagram. KL&L Archives.

KL&L Issue #159 Page 6 (3/35)

author W.M. Camp. Picking up where Issue #151 left off, an article on modern switch keys examines additional examples of currently produced brass keys. Switch key markings on the Pennsylvania Railroad are the subject of another story. KL&L members are invited to provide updates and additions to both of these articles.

Despite the name of our organization, many Key, Lock & Lantern members are interested in more than just railroad hardware. Readers who collect timetables and other paper memorabilia will find our ongoing series on the conservation and restoration of paper railroadiana to be of interest.

If you are reading the KL&L News because it was forwarded to you by a fellow collector, please consider membership in Key, Lock & Lantern. The KL&L magazine is only sent to paid members, and is not available online. KL&L covers all types of railroad memorabilia, with articles about



Official Journal of Key Lock & Lantern, Inc.  
A Non-Profit Membership Corporation Chartered in New Jersey  
Serving Railroadiana Collectors Since 1966  
Volume 39, No. 3 Summer 2010 Issue # 159



**GHOSTS OF THE HOOSAC TUNNEL**



**In This Issue:**

Railroads of the Hoosac Tunnel	The Care of Switch Lamps	\$5.75
Modern Brass Switch Keys	Questions & Answers Column	Single Copy Price
Cleaning Methods for Paper Railroadiana	PRR Switch Key Markings	

a wide variety of subjects. Upcoming articles include the continuation of our series on the history of the Dietz Vesta lantern, some interesting display and restoration tips, and more "Photos from Along the Line," and "Know Your Collector" profiles.

The Key, Lock & Lantern magazine is an excellent reference source for serious collectors of railroadiana. Don't wait until printed copies of this issue are no longer available. Make certain that your Key, Lock & Lantern membership is up to date, or join today!

## From the KL&L Archives

### Pennsylvania Railroad Switch Key Markings by Paul Vaverchak

In this column, we will occasionally dig into the extensive Key, Lock & Lantern archives for articles and photos that provide answers to current Q&A questions, and that are related to recent articles. Updates and additional information are always appreciated. The following text was originally published in Issue #54.

All Pennsylvania Railroad switch keys should be marked with two letters and a number designation as follows:

**Prefix Letter** - E, C, W, or Z indicates the region or zone.  
**Number** - the number of the individual key.  
**Suffix Letter** - Indicates the division in the respective region or zone.

The following tables show the various letters used in each region:

<b>C - Central Region</b>	<b>E - Eastern Region</b>	<b>W - Western Region</b>
A - Pittsburgh Division	A - Atlantic Division	C - Chicago Terminal
B - Conemaugh Div.	D - Delmarva Division	F - Fort Wayne Div.
C - Monongahela Div.	J - Middle Division	G - Grand Rapids Div.
D - Eastern Division	M - Maryland Division	P - Indianapolis Div.
E - Panhandle Division	P - Philadelphia Div.	L - Logansport Div.
H - Buffalo Division	S - Wilkes-Barre Div.	M - Columbus Division
J - Kenow Division	W - Williamsport Div.	N - Cincinnati Division
K - Cleveland Division	X - Philadelphia Term.	S - St. Louis Division
L - E&A Division	<b>Z - New York Zone</b>	T - Toledo Division
	Y - New York Division	
	L - Long Island RR	



Most PRR "knobby" keys appear to predate the regional and divisional switch key marking scheme. Editors Note: There are a number of Pennsylvania Railroad keys that do not have markings in the above lettering scheme. Most "knobby" keys appear to predate this divisional identification system, although some of these keys have letter markings other than the standard "S" for switch keys.

Also, there are markings that evidently utilize this lettering system that do not appear in Paul Vaverchak's tables (such as the keys pictured to the right). This seems to indicate that there are additional PRR divisional markings that have not yet been identified. There is also the possibility that some of these keys may have been produced for the Penn Central.



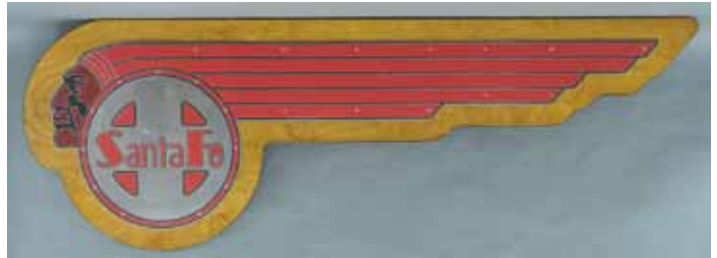
Key Lock & Lantern members are invited to provide updates to the above lists, with additional division or region markings (or other markings). Also, information regarding the dates that this system was in use would be appreciated, along with any examples of it being continued by Pennsylvania RR successor Penn Central.

This PRR cut was carried over to the Penn Central. Are there any examples of the division markings on PC keys?  
KL&L Issue #159 Page 8 (3/35)

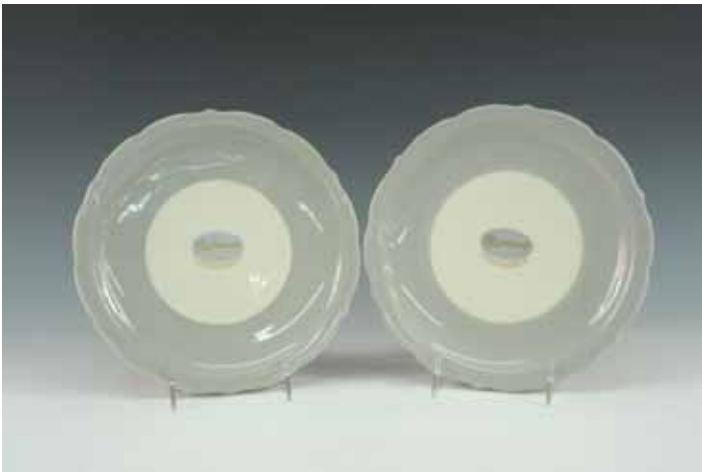
# Railroadiana Auctions

*Continued from Page 3*

With the regular fall shows also scheduled, our calendars will no doubt be full during the next few months. It will be interesting to see what prices the rarer items bring at auction, and there will be no shortage of "new stock" at the shows. For more information on any of these auctions, check out our Railroadiana Show & Auction Calendar on page 2.



*Santa Fe Locomotive Herald from the Marvin D. Robertson Collection. Dirk Soulis Auctions Photo.*



*Fred Harvey China from the Marvin D. Robertson Collection. Dirk Soulis Auctions Photo.*



*Northern Pacific Lock & Key in the upcoming Brookline Railroadiana Auction. Photo/Scott Czaja.*



*NE Glass Fitchburg RR Lantern in the upcoming Brookline Railroadiana Auction. Photo/Scott Czaja.*

The New York-Pennsylvania  
**COLLECTOR**  
 Living with Antiques, Art & Americana

A Monthly Publication Featuring News & Articles About Antique Collecting & History



*Auction & Show Listings  
 Club Meetings & Events  
 Identification & Fakes  
 Antique Restoration Tips  
 Museums & Historic Sites  
 Dealer & Flea Market Ads*

Subscription & Advertising Information:  
 1-800-518-0875 [www.nypa-collector.com](http://www.nypa-collector.com)

# Gaithersburg: The Supermarket of Railroadiana

For any collector of railroad memorabilia, walking into the railroadiana show at Gaithersburg, MD for the first time is a jaw-dropping experience. Most of us are accustomed to attending smaller shows or searching for a few tables of railroadiana at model train shows. At Gaithersburg, there are hundreds of tables of railroad artifacts, seemingly stretching as far as the eye can see, and filling five different rooms. If there was such a thing as a supermarket of railroadiana, it would most certainly look like this.

The Gaithersburg show offers something for everyone, from rare lanterns to \$1 timetables, and everything in between. From exhibitors offering replacement parts and globes, to



a constant parade of trains on the former B&O Metropolitan Subdivision, adjacent to the show. A model train show is held at the same time, in an adjoining building, and is included in the price of admission to the railroadiana show.

This year's 33rd Annual Gaithersburg Railroadiana & Transportation Artifacts Show & Sale is scheduled for November 7th, with dealer set-up and early admission on November 5th & 6th. The show is to be held at the Montgomery County Fairgrounds in Gaithersburg, MD. For more information, visit the website of show sponsor Golden Spike Enterprises at [www.gserr.com](http://www.gserr.com).



dealers of scarce and out of print books, almost every type of railroad memorabilia is available at the show. While it is possible to see most of the tables during the regular hours on Sunday, an all-weekend "early admission" ticket is a must for serious collectors. Spending more than one day at the show allows for a more leisurely pace, and leaves time to visit with fellow collectors. Adding to the railroad atmosphere, there is



**KEY LOCK & LANTERN**  
Can Help Promote Your  
**Auction, Show or Event**  
Contact Dave Hamilton at  
[transportsim@aol.com](mailto:transportsim@aol.com)

# Mixed Train to Operate on Former NYC RR Falls Road

Railroad history buffs will have the opportunity to relive the days of mixed train service on November 5, 2010, with a special trip from Lockport to Brockport, NY on the Falls Road RR. When the local freight departs on that day, two coaches will be attached to the train, allowing riders to take a rambling trip over this former New York Central line. While the Medina Railroad Museum often sponsors short excursions on the Falls Road, this run will be a true mixed train, with the crew performing switching enroute.

This rare chance to ride on a working mixed train is made possible through the cooperation of Genesee Valley Transportation, operator of the Falls Road, and the Western New York Railway Historical Society, owner of the coaches. The trip is being operated for the benefit of fellow railroader (and railroad enthusiast) Matt Wronski. Most Key, Lock & Lantern members from western New York probably know Matt, who suffered from a stroke earlier this year. All of the proceeds from this event will go to the Wronski family.

Seats on this unique excursion are available for a \$100 donation, which includes lunch enroute. The train will board at 8:00AM at the Lockport yard office, and will cross the high bridge over the Erie Canal before traveling through the rural countryside. Passengers will be able to view freight switching operations, and photo stops are tentatively planned.

Ticket requests may be sent to Chris Henrici, General Manager - Falls Road Railroad, 263 Ross St., Batavia, NY 14020. For more information, leave your name and a brief message at 716-684-6219.

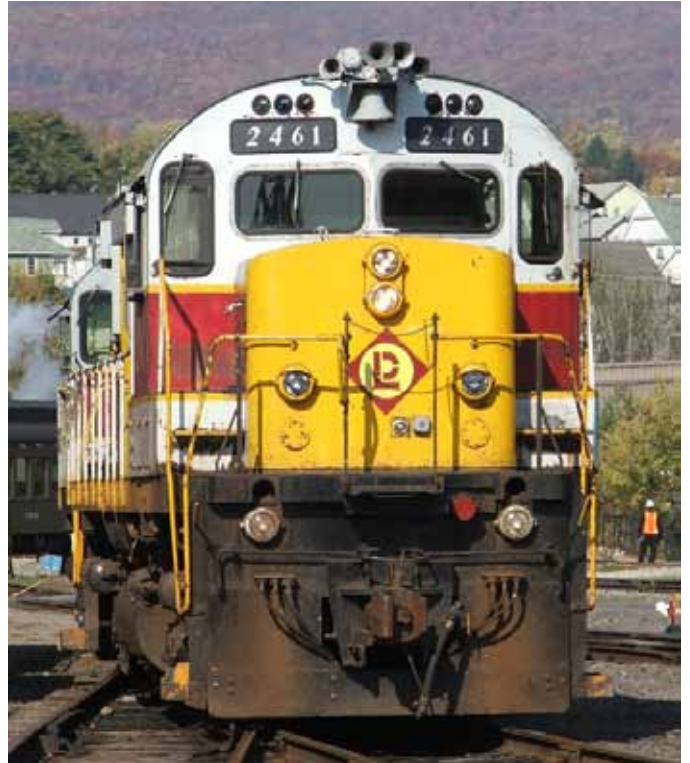


## Railroad Museums & Historical Groups

Send in photos of your museum's displays for publication in

**KEY LOCK & LANTERN**

For more information on how KL&L can help promote your museum, contact Dave Hamilton at [transportsim@aol.com](mailto:transportsim@aol.com)



*Genesee Valley Transportation, owner of the Falls Road Railroad, operates a fleet of historic Alco locomotives.*

## Railrodiana Show & Auction Calendar

*Continued from Page 2*

- Nov 20 Harrisburg, PA** - Conrail Historical Society Train & Railroadiana Show. Pennsylvania Farm Show & Expo Center. Info: [www.thecrhs.org](http://www.thecrhs.org).
- Nov 27 Charlotte, MI** - Railroadiana Auction. Extensive collection of Glen Van Winkle. Stanton's Auctioneers & Realtors. Info: [www.stantons-auctions.com](http://www.stantons-auctions.com).
- Dec 5 Albany, NY** - Great Train Extravaganza. 10am-4pm. Empire State Plaza Convention Center. Info: [www.gtealbany.com](http://www.gtealbany.com). Visit the KL&L booth at the show.
- Dec 11 Columbus, OH** - 48th Annual Buckeye Railroadiana Show & Sale. 9am-4pm. Ohio Expo Center. Info: [www.gserr.com](http://www.gserr.com).
- Dec 18-19 Tampa, FL** - 6th Annual Tampa Model Train & Railroadiana Show. Sat 9am-5pm. Sun 10am-4pm. Florida State Fairgrounds. Info: [www.gserr.com](http://www.gserr.com).
- Jan 29-30 Springfield, MA** - Railroad Hobby Show. 9am-5pm. Eastern States Expo. Info: [www.railroadhobbyshow.com](http://www.railroadhobbyshow.com).

Send Show & Auction Listings to: [transportsim@aol.com](mailto:transportsim@aol.com)



# WANT ADS & ANNOUNCEMENTS

Want Ad insertion is FREE to all current Key Lock & Lantern members on a space available basis, in both the KL&L Magazine and the KL&L News (digital edition). Ads may be e-mailed to [j944wb@aol.com](mailto:j944wb@aol.com) or may be sent by regular mail to: John & Marie Brainard, 35 Nordhoff Place, Englewood, NJ 07631

## For Sale

**For Sale:** D&H Schenevus station sign - 13 3/4" x 74" steel with cast iron letters. In very good condition, ready for display. \$500.00. Ralph Gasner, 86 Chappell Dr., Milford, NH 03055. Call 603-673-6125.

**For Sale:** Brass conductor's lantern - CT Ham Mfg Co #39. Page 137, Item 13.5 in the Encyclopedia of Railroad Lighting, Vol 1. \$400.00. Paul Pietrak at [marypaulp@aol.com](mailto:marypaulp@aol.com) or 716-662-4193.

**Wanted:** Buyer for Star Headlight presentation lantern, nickel plated, green over clear globe w/ old english lettering "Bates" with scrollwork and wreaths. Rare maker, super display. Pictured on cover of KL&L Issue 158. E-mail for more info/photos: [tmstrsurs@logical.net](mailto:tmstrsurs@logical.net). Asking \$1000.00 + shipping. Jane Silvermail.

**For Sale:** *Lanterns of the Western Maryland*. By Mike Yetter. A spiral-bound, 50-page book containing a detailed history and color photos of lanterns and globes used by the Western Maryland and its predecessors. \$20 + \$4 postage. Send cashiers check or money order to: Mike Yetter, 1423 Kensington Drive, Apt. 204, Hagerstown, MD 21742. E-mail: [myetter@myactv.net](mailto:myetter@myactv.net).

**For Sale:** Switch Lamps, Marker Lights & Parts. Website: [JerrysRRStuff.com](http://JerrysRRStuff.com). Phone: 206-778-0386. E-mail: [jerry@JerrysRRStuff.com](mailto:jerry@JerrysRRStuff.com)

## Wanted

**Wanted:** Switch keys from the L&HR, WVRR, SRR, NY&ERR. Stock Certificates: Wawayanda RR, Mine Hill RR, Pequest & Walkill RR, and Southfield Branch RR. Phil Simms, 8 Still Waters Drive, Campbell Hall, NY, 10916. Call 845-427-5051.

**Wanted:** Brass burner for a Dressel double wire tall globe railroad lantern & twist off font with burner for a Dietz 39 Vulcan wire frame. Also buying Western Maryland locks, keys, lanterns & globes, and C&PRR items. Joseph G. Hauger, 401 2nd St., Terra Alta, WV, 26764. E-mail address: [whiteoak4@verizon.net](mailto:whiteoak4@verizon.net) or phone 304-789-2229.

**Wanted:** Looking for small hardware items from the Northhampton & Bath RR such as keys, badges, brass time/tool checks or any other significant small item. Have some interesting items to trade from US Steel roads. Contact Jeff Wolfe at [lobowolf@aol.com](mailto:lobowolf@aol.com).

## Wanted

**Wanted:** Hardware items from the Gary Railways, EJ&E and CLS&E, NYCL oiler keys, NYC Subdivision tags and livery and dray badges. Contact Jeff Wolfe at [lobowolf@aol.com](mailto:lobowolf@aol.com).

**Wanted:** Switch key from the Fort Eustis Military RR. Also photo of USAX engine #7291. This was an army engine that I worked on but never got a photo of. Contact Charles McQueen at 29705 Robert Dr, Livonia, MI 48150.

**Wanted:** PRR Macbeth #220 pearl glass globes with straight letters 3/4" in height, "PRR" in rectangle. Need clear and red globes. Have traders or cash. Joel Shaw, 31 Sandle Drive, Fairport, NY 14450. Phone: 585-385-3776.

**Wanted:** Keys, locks, lanterns, fly fishing leader boxes, passes, buttons & other from the Denver, South Park & Pacific Ry - Denver, Leadville & Gunnison Ry - Union Pacific Denver & Gulf - Colorado & Southern Ry. Leonard Walmsley, 11044 Claire Circle, Northglenn, CO, 80234. 303-429-8674.

**Wanted:** Photo of NY State Railways Syracuse Lines car #1024. Also any photos of Syracuse trolleys on Irving Ave and around Syracuse University. Contact Dave Hamilton at [transportsim@aol.com](mailto:transportsim@aol.com) or by phone at 518-439-8392.

**Wanted:** Switch key for the PCRY (Pacific Coast Railway), not PCRR (Penn Central), probably made by Fraim. Contact Steve Mott at 805-544-5339 or by e-mail at [sjmott2359@sbcglobal.net](mailto:sjmott2359@sbcglobal.net).

**Wanted:** Diesel builders plates, especially EL and other northeastern US railroads. Have plates to trade. E-mail: [RBombel@aol.com](mailto:RBombel@aol.com).

## For Trade

**For Trade:** W&ARRCo brass top wire bottom 1878 model A&W. Also, switch type key marked SRRR, possibly Sandy River RR. Contact Walter Sulowski at [walter-sulowski@msn.com](mailto:walter-sulowski@msn.com).

Visit Key, Lock & Lantern Online:  
[www.klnl.org](http://www.klnl.org)

# KEY LOCK & LANTERN

## Index on Computer CD

Index of all KL&L Magazines from Issue #1 through Issue #151 in searchable Acrobat (PDF) format. \$7.95 postpaid. Send orders to:

Marie Brainard  
35 Nordhoff Place  
Englewood, NJ 07631-4810

## Membership Brochures

Are Available in PDF Format for Printing & Distribution at Railroadiana Shows, Historical Museums, Railroad Club Meetings & Other Events

Contact Dave Hamilton at [transportsim@aol.com](mailto:transportsim@aol.com) to receive the file by e-mail

## Back Issues

The Sale of Back Issues has been temporarily suspended.



All submissions for the KL&L magazine, news items for the digital KL&L News & general inquiries should be sent to:

KL&L President & Editor  
David Hamilton  
244 Elm Ave  
Delmar, NY 12054  
E-mail: [transportsim@aol.com](mailto:transportsim@aol.com)

Send membership applications, dues payments, address changes & want ads to:

KL&L Chairman John Brainard & VP-Membership Marie Brainard  
35 Nordhoff Place  
Englewood, NJ 07631  
E-mail: [j944wb@aol.com](mailto:j944wb@aol.com)

### Key Lock & Lantern Membership Form

Please make check or money order payable to Key, Lock & Lantern, Inc. and forward to: Marie Brainard, KL&L Membership, 35 Nordhoff Place, Englewood, NJ 07631-4810

Name \_\_\_\_\_

Representing (business or museum, if applicable) \_\_\_\_\_

Address \_\_\_\_\_

City \_\_\_\_\_ State/Prov \_\_\_\_\_ Zip/Mail Code \_\_\_\_\_

Phone \_\_\_\_\_ E-mail \_\_\_\_\_

Enter my membership at \$25 per year (1st Class mailing in USA) or \$30 per year (non-USA) \$ \_\_\_\_\_

Additional family members at \$4 per person (only one magazine is sent per family).....\$ \_\_\_\_\_

Additional Donation.....\$ \_\_\_\_\_

Enclosed is my check / money order payable to Key Lock & Lantern, Inc. for.....\$ \_\_\_\_\_