



KEY LOCK & LANTERN NEWS



Nov/Dec 2019

Issue No.56

The Bi-Monthly Digital Supplement to Key Lock & Lantern Magazine



**Railroad Preservation
& Museum News**

**Penn Central Society
Annual Convention**

**Railroad Memories
Railroadiana Auction**



KEY LOCK & LANTERN NEWS



The Bi-Monthly Digital Supplement to Key Lock & Lantern Magazine
WWW.KLNL.ORG

Key, Lock & Lantern

A non-profit membership corporation dedicated to the preservation of transportation history and railroad memorabilia

The mission of Key, Lock & Lantern is to gather and publish information on the history of the transportation industry, and to support the preservation of railroad artifacts. KL&L members have an interest in all aspects of railroad & transportation history, from research and preservation projects to the conservation and restoration of all types of historical memorabilia. Originally formed in 1966, Key, Lock & Lantern, Inc. was officially incorporated in 1988 as a non-profit, educational, membership corporation in the State of New Jersey, under the provisions of Section 501(c)(3) of the United States Internal Revenue Code. Membership is open to anyone with an interest in transportation history and in achieving the goals of the organization.

Officers & Trustees

Chairman of the Board

John Brainard
j944wb@aol.com

President & Editor

David Hamilton
transportsim@aol.com

VP- Membership / Treasurer

Marie Brainard
j944wb@aol.com

Secretary

(Rotates Among Trustees)

Chaplain / Sgt at Arms

Chip Greiner

Counsel

Jeremy Tuke

Historian

Peter Gores

Trustees at Large

Lyman Gray, Sam Lombardi, Joel Shaw, Sam Ferrara, Phil Simms, Leonard Gordy, Bob Lipman, Randy Bushart, William Sternitzke, Bill Roberts, Bob Myers & Joey Senese

www.klnl.org



For Current News
"Like" KL&L on

facebook

November/December 2019 Issue #56

From the President's Desk	3
Railroad Event Calendar.....	3
Penn Central 20th Anniversary Convention.....	4
Railroad Memories Auction.....	6
NRHS Announces Grants.....	8
Key Lock & Lantern Magazine #181.....	10
KL&L Convention Planned.....	11
Adirondack Railroad Abandonment.....	12
Want Ads & Announcements.....	21
Membership Application	22
KL&L News Editor.....David Hamilton	
Production Facilities.....NY-PA Collector Magazine	
Send News Items for Publication to the Editor at:	
Transportsim@aol.com	

The Key, Lock & Lantern News is published bi-monthly as a digital supplement to the quarterly Key, Lock & Lantern magazine. Recipients may repost or forward complete and unmodified copies of this newsletter to other hobbyists and websites, but its content may not otherwise be copied or distributed without the permission of the KL&L Board of Trustees. Copyrights are held by the respective authors and photographers. Excerpts of news items may be published with the credit line "Key, Lock & Lantern News"

Annual membership dues for Key, Lock & Lantern are \$30 for residents of the USA, and \$40 for outside of the USA (by money order or electronic payment in US funds). Members receive four issues of the quarterly KL&L magazine, delivered via first class mail. Memberships for additional family members are \$5 each (only one magazine is sent per family). Applications for membership & address changes should be forwarded to the VP-Membership at the e-mail address listed at right. Online membership forms and dues payment via Paypal are available at www.klnl.org.

Contributions of articles, photos, and news may be forwarded to the editor at the e-mail address listed at right. Hard copy articles should be written on 8 1/2 x 11" paper, and typed or neatly printed. Photos should be sent with a caption card attached which includes the contributor's name, phone number, and description. Photocopies of advertising and supply catalogs are acceptable. The submission of material in digital format is preferred, with text files in DOC, TXT, or PDF format, and images in JPG, TIF, BMP or GIF format. Digital files may be sent by e-mail or on a computer CD or flash drive. Please contact the editor regarding optimum file sizes and formats.

By submitting material to Key, Lock & Lantern, the contributor grants permission for use in any edition of the KL&L magazine, digital newsletter, websites, and other publications. All material will be retained by KL&L for future use, unless the contributor specifically requests that it be returned, and includes a suitable, self-addressed, stamped envelope. Current deadlines are listed in the Key, Lock & Lantern Advertising Guide, which is available on the KL&L website at www.klnl.org, or by contacting the editor.

Key Lock & Lantern Update

For the second year in a row, I was unable to attend the big railroadiana show in Gaithersburg, due to schedule constraints with my new job. KL&L members who exhibited there reported good sales and plenty of high quality artifacts to add to their collections. I always enjoy visiting with fellow collectors, so it was disappointing that I couldn't make it to this year's event.

Since I usually man a table at the show and provide the latest news about KL&L, I thought that I would give a brief summary of what is going on with the organization. First, the wait is almost over for the next issue of the printed KL&L magazine! Production is complete and we are currently making arrangements for printing; I'll send out an e-mail message when it has been mailed and the digital version is available in the members-only section of the web site.

The most common question that people ask at the show is: what is the plan for next year's KL&L Convention? Usually, I have a flyer to hand out at Gaithersburg with a preliminary program and hotel information. This year, we have run into some scheduling issues with the Radisson Lackawanna Station Hotel in Scranton, PA, which has been the home of the convention for the last several years. We are currently looking into alternative dates and facilities, and we expect to have something arranged within the next few weeks. Watch the KL&L website and Facebook page for an announcement.

With an expanded convention program that now includes lecture programs, tours, and excursions, we have a greater need for members to serve on the convention committee or to simply assist during the event. We need people to man the registration table, help with setup, and serve as coordinators for specific activities. When registration forms are sent out this year, we'll be looking for volunteers to help out with various jobs.

We are also looking for members who are interested in serving on the KL&L Board of Trustees or in one of the officer positions. Several of our officers and trustees are planning to retire from their positions in the near future, and we are looking for some new faces to become involved. The annual meeting announcement will be made when convention registration forms are sent out, and nominations for officer positions will be accepted at that time. Please consider volunteering your time and talent.

Also, several members have inquired about renewal of dues for the coming year. Our membership year generally begins in July, as opposed to the calendar year, and includes four issues of the printed magazine. Renewal notices will be sent out once everyone has received four issues of the magazine, so there is no need to send any dues payment yet.

As always, thanks to everyone for your ongoing support of Key Lock & Lantern, and for your patience while waiting for the magazine to be completed. If all goes well, I'll be going to the Springfield show in January, and I hope to see some KL&L members there.

Dave Hamilton

KL&L President & Editor

Railroad Event Calendar



Upcoming historical society conventions, special events, railroadiana shows & auctions. Listings subject to change. Check show web sites before traveling and visit www.klnl.org for updates. See submission guidelines at the end of the calendar.

- Dec 1 Albany, NY** - Great Train Extravaganza. "The Egg" at the Empire State Plaza.
Info: www.gtealbany.com.
- Dec 7 Columbus, OH** - Buckeye Railroadiana Show. Ohio Expo Center.
Info: www.gserr.com.
- Dec 7-8 Marlborough, MA** - New England Model Train Expo. Best Western Royal Plaza.
Info: www.hubdiv.org.
- Dec 14 Lone Jack, MO** - Railroadiana Auction by Soulis Auctions.
Info: www.soulisauctions.com.
- Dec 14-15 Rochester, NY** - RIT Tiger Tracks Train Show RIT Gordon Field House.
Info: <http://ritmrc.org>.
- Dec 21-22 Tampa, FL** - Railroad Show. Florida State Fairgrounds.
Info: www.gserr.com.
- Dec 28-29 Grayslake, IL** - Grayslake Train Show. Lake County Fairground.
Info: <http://trainshow.com/grayslake>.
- Jan - TBA Georgetown, CO** - Railroadiana Consignment Auction. Railroad Memories.
Info: www.rrmemories.com
- Jan 6 Allentown, PA** - Lehigh Valley Train Meet Merchants Square.
Info: www.valleygoto.com.
- Jan 11-12 Colorado Springs, CO** - Train Expo. Chapel Hills Mall Event Center.
Info: www.tecoshow.org.
- Continued on Page 20*

On the Front Cover:

An Amtrak Empire Service locomotive is readied for its next run in the Rensselaer, NY shop. The facility was a stop on the 2019 PCRRHS convention tour program.

Penn Central Railroad Historical Society Holds 20th Annual Convention in Albany

When a small group of railroad history buffs met in Altoona twenty years ago, they almost felt as if they were part of an underground movement. Their common area of interest was the Penn Central, a company which had become symbolic of the poor state of railroading in the northeastern United States during the late 1960's and early 70's. Career railroaders and railfans alike had very few fond memories of the huge railroad that deteriorated before their eyes during its prolonged bankruptcy.

However, the story of the Penn Central is an important part of railroad history, and many in the preservation community obviously believed that it was worth sharing. From that small handful of people who met in Altoona, the Penn Central Railroad Historical Society has grown to 600 members, and recently held its 20th annual convention in Albany, NY over the weekend of September 19th through 21st.



PCRRHS convention tour participants visited the CSX Selkirk Hump tower, opened by Penn Central in 1968.



Key Lock & Lantern member Matthew Bushart's exhibit was one of several on display at the PCRRHS convention.



Amtrak's Rensselaer Maintenance Facility was one of the stops on the PCRRHS tour of the Albany, NY area.

Each evening included presentations about the history of the Penn Central, along with vendor tables and displays of PC memorabilia. The Saturday evening banquet featured a program by Bruce Becker of the Rail Passenger Association, highlighting the organization's activities, and his personal experiences growing up in a railroad family in Utica, NY.

Convention attendees enjoyed tours of society member Bill Emerson's model railroad layout, the Port of Albany, Amtrak Rensselaer shop, and former Penn Central Selkirk Yard, now operated by CSX. Through the generous cooperation of the various railroads and the port authority, tour participants were allowed access to facilities that are not accessible to the general public. From the railcar loading docks inside the port sheds and the Albany Port Railroad engine house, to the Amtrak shop floor and the CSX Selkirk hump tower, those who took the tours were treated to a first hand look at modern operations on former Penn Central properties.

The 2020 convention is tentatively planned for the Detroit area, with details and dates to be announced. This year's event will be hard to top, though, and it was certainly a great way to celebrate the 20th anniversary of the organization. For more information about the Penn Central Railroad Historical Society, visit www.pcrrhs.org.

Photos Continued on Page 13

The McHugh Collection of
**HISTORICALLY SIGNIFICANT
RAILROADIANA**

Relics from The Golden Era of Rail Travel 1865 to 1950
Saturday, December 14th, at 10:00 am Central



Builder's plate from
The Exodus 1947 née President Warfield

Rare builder's
plate, number
board,
aluminum
oval logo and
headlight
from New
York Central
locomotive
number 5449

Held inside 529 Gallery
529 W Lone Jack Lee's Summit Rd, Lone Jack MO 64070
816.697.3830 | SoulisAuctions.com



Railroad Memories Auction 105 Includes a Large Selection of Scarce Memorabilia

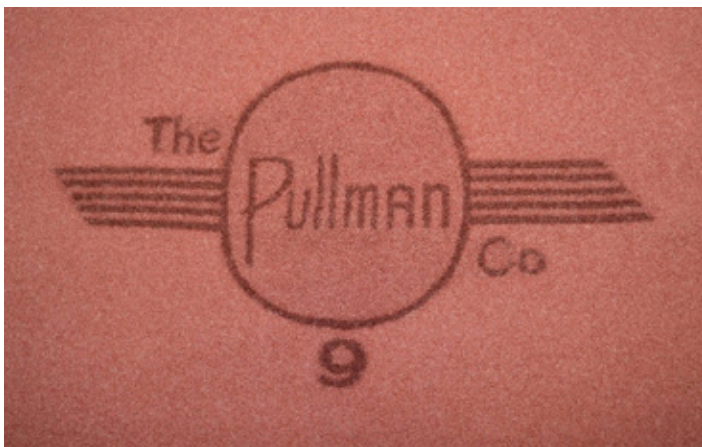
The latest Railroad Memories catalog and online auction featured a variety of rare artifacts from several different collections. As always, there was a nice selection of material from Colorado and western lines, along with additional memorabilia from the east that had been part of the Neil Shankweiler collection. A few exceptionally rare artifacts were offered, and brought strong results, showing that the “good stuff” always attracts interest. The sale of these collections will continue in Auction 106, which is planned to close in January. *All photos, prices, and descriptions courtesy of Railroad Memories Auctions. Prices do not include any applicable buyer's premium or shipping.*



A Union Pacific Denver & Gulf lantern by Railroad Signal Lamp & Lantern Company (a rare variation) with clear cast UPD&C extended base globe sold for a high bid of \$15250.



A \$320 bid was needed to take home this Chicago & Northwestern Railroad Sergeant of Police badge with a Meyer & Wenthe of Chicago, Illinois hallmark.



The auction also included some more affordable memorabilia, including this 1944 Pullman wool blanket which went to a new owner for a \$75 high bid.



A 1911 Argentine Central Railway annual pass with a nice vignette, issued to S.S. Jenkins, Treasurer of the Erie & Michigan Railway brought a high bid of \$320.

Continued on Page 14

Railroad Memories



**Proudly announces Auction 106
Scheduled for December 2019, closing early January 2020**

I am excited to be able to showcase some amazing relics from several collections including China & Silver from the estate of Warren Scholl, as well as a wonderful collection of pieces from the estate of Todd Kettwig. Along with remaining items from Neil Shankweiler's collection. My next several auctions will be showcasing some of the rarest pieces ever offered publicly. Some highlights of the upcoming sale include:



Cap & police badges as well as uniforms including this beautiful Santa Fe Drum Major uniform & SP Locomotive Fireman Badge, Santa Fe Red Cap Badge and many more



More builders plates including this Tonopah & Tidewater front end number plate as well as PRR Keystone, NP Heisler, and more



Depot & train relics like this beautiful long drop Santa Fe clock and scarce Santa Fe Golden Gate lighted Drumhead



Dining car treasures like this rare SP Mission Service plate as well as Mimbreno, Griffon, California Poppy, Turquoise Room and more



96 keys including this rare Eureka & Palisades, D&RGRW, F&CC, CMRY, & more



Over 50 passes including this silver Rio Grande Southern filigree pass issued to Timothy B. Blackstone, President of the Chicago & Alton Railroad.



Lanterns Including: F&CC, CMRY, OSL, D&RG, Brass Top SPCO & more



Locks including this rare UPD&G, C&S Keen Kutter, D&RG Train Box, F&CC, MP Men's Toilet and more

Additionally there will be silver, glassware, whistles, signs, timetables, brochures & menu's, with over 600 lots this time as I have a lot to offer. In the future I will be showcasing a one of kind Santa Fe Glorietta plate, a D&RGRW harp switch stand rescued from the Silverton Northern Line, more rare cap badges, hats, uniforms, locks, keys, and of course more scarce and beautiful lanterns, the list is really exciting. So if you are not a registered member on my website I urge you to complete that today! My auctions will be epic in 2020!! Please feel free to contact me should you have questions.

P.O. Box 415
Georgetown, CO 80444
303-569-5185
email: railroadmemories@gmail.com www.railroadmemories.com

NRHS Announces Recipients of 2019 Railroad Heritage Grants

The National Railway Historical Society (NRHS) has announced nine recipients of its annual Heritage Grants Program. The 2019 heritage grant awards total \$48,000. The recipients are not for profit organizations, including historical societies, museums, and a NRHS Chapter.

This year's grants were awarded to the following recipients:

\$8,000 to the Oregon Rail Heritage Foundation in Portland, Oregon towards the refurbishment and installation at its Rail Heritage Center of a 102' continuous turntable, the last remaining historic element of the former Southern Pacific Brooklyn roundhouse. It will be one of only a handful of powered operating turntables accessible to the public in the West.

\$8,000 to the Roanoke Chapter, NRHS in Roanoke, VA to replace window gaskets and related parts of former Norfolk & Western Railway "Jim Crow" coach #512, built in 1949 by Pullman Standard Company, that was originally part of the consist of the railroad's classic streamliner named the Powhatan Arrow.

\$3,500 to the North Carolina Railway Museum (NCRM) in New Hall, NC towards the rehabilitation of the Goldston Depot, a small town freight depot constructed around 1884 by the Cape Fear & Yadkin Railway, and later operated by the Southern Railway. The Depot has been relocated to the grounds of the NCRM and will be available for Museum visitors to view the original interior and a display of historic artifacts stored by the Museum.

\$8,000 to the Pacific Railroad Preservation Society in Portland, Oregon for work relating to the 15 year FRA boiler inspection and rebuild of former Seattle, Portland & Spokane steam locomotive #700, originally built by Baldwin Locomotive Works in 1938. The locomotive is the railroad's last surviving Northern E-1 class. The NRHS grant is specifically for the rebuild of two air pumps used in the locomotive braking system.

\$2,000 to the New England Steam Corporation in Winterport ME toward the replacement of the tender cistern and coal bunker of Maine Central passenger steam locomotive Pacific class #470, built by the American Locomotive Company in 1924. The locomotive was the last steam locomotive to operate on the Maine Central. The locomotive tender restoration is part of the overall project to restore #470 to operating condition.

\$5,000 to the Lake Superior Railroad Museum in Duluth, MN for the cosmetic restoration of Erie Mining Company S-12 switcher No. 403 (later renumbered 7243) the last diesel to leave the Baldwin Locomotive Works factory in Eddystone, PA in 1956 when the factory closed. The locomotive worked at the Erie Mining plant in Hoyt Lakes, MN from 1956 to 1992 when it was donated to the Museum.



A \$2000 grant for the restoration of the tender on Maine Central locomotive #470 was one of a total of \$48,000 in grants awarded by the NRHS for preservation projects.

\$8,000 to the Nashville Steam Preservation Society in Nashville TN towards the rebuild of the Worthington SA Hot Water Pump (the Pump), a part of the feedwater system of Nashville, Chattanooga, & St. Louis steam locomotive No 576, a 4-8-4 J-3 class engine built by the American Locomotive Company in 1942. The restoration of the Pump is part of the restoration of the locomotive to operating condition.

\$2,500 to the Nevada County Narrow Gauge Railroad Museum in Nevada City, CA to restore gondola car #233, built in 1917 and used by the Southern Pacific narrow gauge line ("SP narrow gauge") until 1955. It is the only remaining SP narrow gauge gondola car that has all mechanical parts preserved and can be fully restored.

\$3,000 to the Placerville & Sacramento Valley Railroad in Folsom, CA for brake equipment parts for Southern Pacific "suburban" coach # 2110 built by the Pullman Company in 1924 and used in regular commuter service between San Francisco and San Jose, CA. It is a passenger car design that dominated northern California commuter trains for decades. The NRHS grant will enable the car to return to operating condition after cosmetic repairs. *(News courtesy of the National Railway Historical Society)*

**Railroad Museums &
Historical Societies**

Send in news & photos to

KEY LOCK & LANTERN

E-mail: transportsim@aol.com

Railroadiana Auctions - Spring & Fall - Brookline, NH

Railroadiana Consignment Auctions Held Each Spring & Fall

Brookline Auction Gallery LLC - 32 Proctor Hill Rd, Brookline, NH 03033

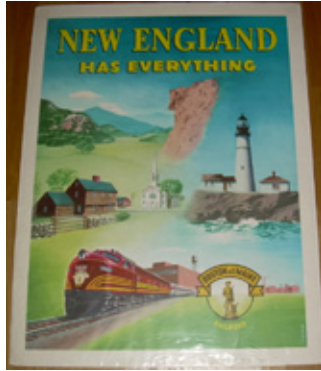
Auction information including photos: www.tagtown.net

Scott Czaja - Sales Manager (978) 779-2904

Highlights of Recent Sales



Concord RR Thompson Lantern: \$1700,
Triple Marked Boston & Albany New
England Glass Lantern: \$1750



Boston & Maine Railroad New
England Travel Poster with
Minuteman Logo: \$410



Grand Central Station Lantern with Green
Cast Globe: \$3100, New York New Haven &
Hartford - Hartford Division Thompson: \$2500



Cast Iron Railroad Crossing Stop,
Look & Listen Sign: \$400



Nickel Plate Road Berkshire #774
Number Board: \$2200



St. Albans Street Railway Dock
Master Hat Badge: \$625

Next Auction: April 3rd & 4th, 2020



Lehigh Valley RR brass top marker lamp: \$700
New England RR Fancy Cast Lock: \$1100



Boston & Maine RR Silver
Casserole Dish: \$800



Grand Trunk Railway Brass Lock: \$1800
Pennsylvania RR cast fixed globe: \$2900



Pennsylvania Railroad Gate Sign: \$400



New Haven RR Winsted, CT
Wax Sealer: \$1100



Central Vermont Railway Ticket Office &
Pullman Reservations Sign: \$675

Now on LiveAuctioneers.com - We also accept absentee bids via: e-mail & mail
Quality consignments are welcome for future sales - call Scott or email: sczaja@hotmail.com

Key Lock & Lantern Magazine Issue #181 Ready to Go to Press

The wait is almost over! *Key Lock & Lantern* Issue #181 is complete and ready to go to press. This edition contains in-depth articles on a variety of subjects involving all aspects of railroad history and collecting.

Phil Simms is always on the lookout for scarce and unusual railroad hardware, and in this issue he shares with us his insights on the Belknap Hardware switch lock. Collectors of locks, lanterns, timetables, and tickets will enjoy the second part of our article on Catskill Mountain railroads, featuring memorabilia from Joey Senese and several other members.

The story of the Northern Pacific Great Big Baked Potato concludes in this issue, with many illustrations of advertising and promotional items depicting the giant spud. Traction buffs (and anyone else, for that matter) will find Phil O'Keefe's examination of streetcar fare registers to be a fascinating topic.

Our previous features that included photos depicting railroaders using the "tools of the trade" that we now collect were popular with members, so we have featured a few more from the Library of Congress collection. KL&L members who have attended the annual convention are no doubt familiar with the fine lantern restoration work of Andy Swoyer, and he takes us through a project involving a rare fixed globe lantern in this issue.

Announcements will be made on the KL&L website & Facebook when Issue #181 is in the mail and posted for download.



The Story of Northern Pacific's Great Big Baked Potato

Life During Wartime... and into the Streamliner Era

By David Hamilton

Timeline on Northern Pacific's progress from 1918 to 1942... (text continues)

Streetcar Fare Registers

The Unusual Belknap Lock

The Faces of Railroad

OSP Fixed Globe Lantern

Memorabilia from Catskill Mountain Railroads Part 2

The Faces of Railroad

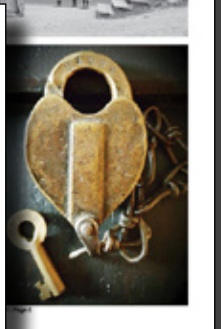
Images from the Library of Congress Collection

Collecting Streetcar Fare Registers

By Phil O'Keefe

STERLING REGISTERS

STERLING-MAKER COMPANY



The Faces of Railroad

The completed project with the original and polished glass globe lantern... (text continues)

KL&L Convention Schedule to be Announced by Committee

The schedule and registration information for the annual Key Lock & Lantern Convention is typically announced at the Gaithersburg railroadiana show in November each year. However, collectors and railroad history buffs who attended the 2019 show probably noticed that the flyer for the upcoming KL&L Convention was not yet available. Scheduling issues with the Radisson Lackawanna Station Hotel in Scranton, PA, where the convention has been held for the past few years, have caused a delay in finalizing plans.

The convention committee is currently working on making updated arrangements for the 2020 convention schedule and details will be announced soon. The program will of course include the “main event” of the weekend - the transportation and industrial memorabilia show & sale, and the annual dinner and history presentations. The tours and excursions that have been part of the convention in recent years will also return for next year’s event.

Once final arrangements are made, the committee will make an announcement on the KL&L website and the organization’s Facebook page. Another great convention is in the works for next year, so keep an eye out for updates over the next couple of weeks!



A photo runby on the 2019 KL&L chartered excursion over the Electric City Trolley Museum’s Laurel Line route.



The railroad, transportation & industrial memorabilia show & sale is the “main event” of the KL&L Convention.

Public Comment Period is Now Open for Adirondack Rail Line Abandonment Plan

Regular readers of the *KL&L News* are no doubt familiar with this publication's ongoing coverage of the situation involving the railroad line through the heart of upstate New York's Adirondack Mountains. Stretching from a connection with the national rail network north of Utica to the Olympic village of Lake Placid, the line was slated for abandonment by bankrupt Penn Central in the early 1970's.

Recognizing the route's value as an important transportation corridor, New York State purchased the line to provide train service to the 1980 Winter Olympics. The private Adirondack Railway received the contract to operate the railroad, but the financial burden of rehabilitating the deteriorated line was too great, and trains stopped running shortly after the games ended. For the next decade, the railroad remained dormant.



An Adirondack Scenic Railroad train in the High Peaks region on a section of the line slated for abandonment.



Under a New York State plan to abandon the line, trains will no longer stop at the Saranac Lake Union Station.

In 1992, a group of local railroad enthusiasts began limited tourist train service on a small segment of the line near Old Forge, in celebration of the 100th anniversary of the opening of the line. This ride proved to be extremely popular with visitors to the area, and the Adirondack Scenic Railroad was formed to expand the operation.

In 1996, New York State developed a plan for the complete rehabilitation of the line from Remsen to Lake Placid, and the Adirondack Scenic Railroad was awarded a contract to operate trains over it. Service gradually expanded to include runs from Utica to Big Moose and Lake Placid to Saranac Lake, with a large gap in the middle of the line awaiting state funding to put it back in service.

However, instead of continuing its efforts to restore train service between Utica and Lake Placid, the State of New York has changed direction and modified its management plan to include the abandonment of the railroad between Lake Placid and Tupper Lake. This plan is consistent with

the goals of local winter recreation lobbying groups to turn the entire line into a snowmobile trail.

The Adirondack Scenic Railroad's parent organization, the Adirondack Railway Preservation Society, has led the fight against the abandonment of the railroad, including taking New York State to court over procedural flaws regarding the proposed plan. After a court ruling found that the removal of the railroad was contrary to the regulations which established it, the Adirondack Park Agency simply changed the law to allow for the plan to move forward.

As a result, a new formal review period regarding the abandonment plan has been opened, and written public comments are being accepted until January 8, 2020. Full details of the state's proposed changes to the Remsen - Lake Placid Transportation Corridor Unit Management Plan are available for review on the New York State Department of Environmental Conservation's website at <https://www.dec.ny.gov>. Comments may be sent to John Schmid, NYSDEC, 625 Broadway, Albany, NY 12233-4254 or via e-mail to adirondackpark@dec.ny.gov.





PCRRHS convention attendees observed operations in CSX Selkirk Yard from the Hump Yardmaster's tower.



The Albany Port Railroad opened its doors for PCRRHS members to climb aboard and inspect its equipment.



The CSX Selkirk Hump Yardmaster directs operations from his vantage point high above the yard.



The PCRRHS tour participants visited the Albany Port sheds where railcars are loaded with paper pulp.



PCRRHS members had a front row seat for the humping operation at the CSX Selkirk Classification Yard.



Amtrak Rensselaer Shop foremen show PCRRHS members the overhaul work on diesel engines.



A Central New Jersey Sandy Hook pattern creamer by Lamberton sold for a high bid of \$1000.



A \$3500 bid was needed to take home this Pennsylvania Railroad keystone number plate from 2-10-4 J-1 #6481



A \$300 bid purchased this two-sided porcelain enameled Western Union Telegraph and Cable Office sign.



A Colorado & Southern Fort Worth pattern 5 3/4" hot food cover with no maker's mark sold for a \$480 bid.



A Fairbanks Co. brass heart lock and matching key from the Texas & Pacific Railway sold for a \$750 bid.



A high bid of \$380 bought this 1899 annual pass from the Colorado & Southern Railway Company.

Photos Continued on Page 15



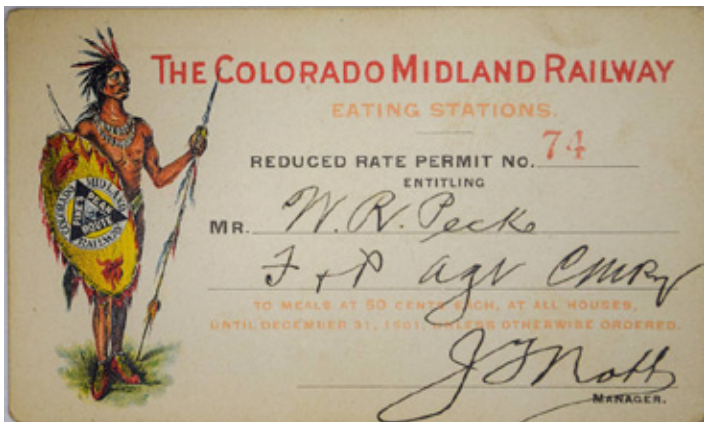
The Lima Locomotive Works plate from Chesapeake & Ohio 2-8-4 K-4 engine #2754 sold for \$2900.



A Colorado Midland Manitou cream shell by Onondaga Pottery of Syracuse went to a new home for \$550.



Switch Keys: Columbus Chicago & Indianapolis Central Railroad with no maker (\$775), San Pedro Los Angeles & Salt Lake Railroad by Adams & Westlake (\$170), Wells Fargo & Company by JHW Climax (\$240)



A \$725 bid was needed to purchase this 1901 Colorado Midland Railway Reduced Rate Permit for lunch rooms.



A \$55 bid purchased this Denver & Rio Grande Western illustrated luncheon menu for the "Pacific Coast Tour President of the United States Franklin Delano Roosevelt & Party Tuesday July 12, 1938."

Photos Continued on Page 16



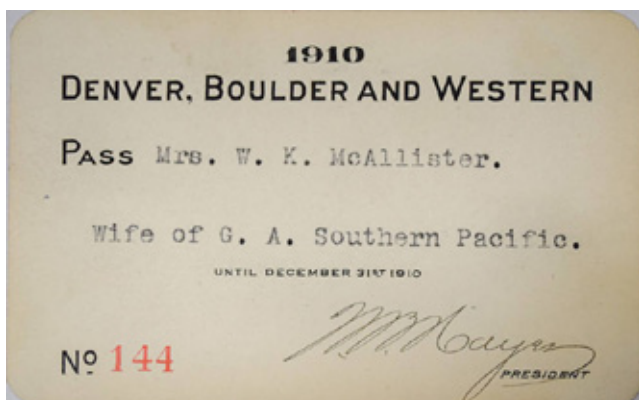
A San Pedro Los Angeles & Salt Lake Harriman Blue water pitcher with Salt Lake Route logo sold for a \$1700 bid.



A Crerar Adams & Co. brass top lantern from the Chicago & North Western with red cut globe sold for \$1700.



A \$3600 bid was needed to buy the 1893 number plate from Great Northern 2-6-0 #10 by Brooks Locomotive.



A very plain 1910 Denver Boulder & Western pass garnered some interest, selling for \$1300.



A high bid of \$1500 took home this nicely restored and repainted Union Pacific step box by Morton.

Photos Continued on Page 17



A Kansas City Southern Railway brass top wire bottom lantern with clear cast globe sold for a \$2800 bid.



A circa 1950 Santa Fe advertising poster for "Sun Spots in the Southwest" went to a new owner for a \$975 bid.



This Silverton Railroad Otto Mears sterling silver pass issued to Frank A. Moore brought a \$6250 high bid.



A \$340 bid took home this Great Northern Railway Agent cap from Marshal Field & Company of Chicago.

Photos Continued on Page 18



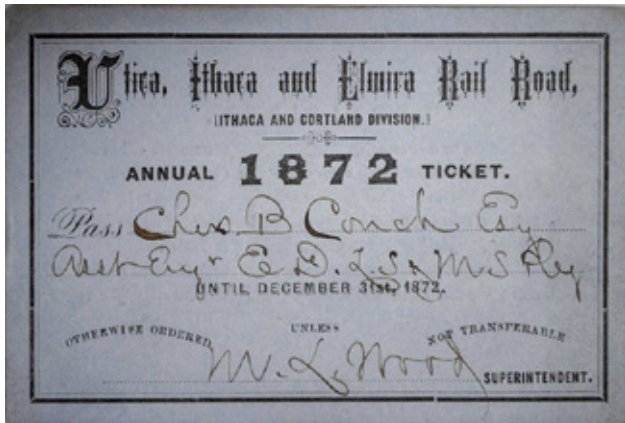
A \$1150 bid purchased this Northern Pacific U.S. Railroad Administration Bridge & Tunnel Guard badge #37.



A Gulf Colorado & Santa Fe Adlake Reliable with clear cast GC&SFRY globe sold for a high bid of \$1000.



This Central New Jersey Sandy Hook pattern 10 1/2" dinner plate by Lamberton sold for a \$625 high bid.



A \$1000 bid was needed to purchase this 1872 Utica Ithaca & Elmira to a Lake Shore & Michigan Southern official.



A \$440 bid took home this Oregon Short Line Railroad brass signal lock with working UPRR key.

Photos Continued on Page 19



A Denver & Rio Grande A&W with clear cast D&RG globe (\$4800), Denver North Western & Pacific Adams & Westlake with red unmarked globe (\$6000) and St. Louis Chicago & St. Paul Railway by Star with green etched globe (\$1050)



A Denver & Rio Grande Scenic Line of the World logo glass water carafe went to a new home for a \$1400 bid.



A scarce Oregon Short Line Railroad "US Mail Car" key went to a new home for a high bid of \$1050.

KEY LOCK & LANTERN

Can Help Promote Your
Auction, Show or Event
With Advertising in KL&L Publications

Contact KL&L Editor Dave Hamilton at
transportsim@aol.com

Railroad Event Calendar

Continued from Page 2

- Jan 11-12 DeLand, FL** - Florida Rail Fair. Volusia County Fairgrounds
Info: www.gserr.com.
- Jan 18 Atlanta, GA** - Atlanta Railroad Show. Infinite Energy Center.
Info: www.gserr.com.
- Jan 19 Utica, NY** - TTCS Annual Train Show. Utica Union Station. <https://www.facebook.com/TTCSUticaTrainShow>.
- Jan 25-26 Springfield, MA** - Railroad Hobby Show. Eastern States Expo.
Info: www.railroadhobbyshow.com.
- Feb 8 Jacksonville, FL** - Rail Fair at the Prime Osborn Convention Center.
Info: www.gserr.com.
- Feb 8 Sharpsburg, MD** - Hagerstown Model RR Museum Train Show
Info: www.antietamstation.com.
- Feb 9 Buena Park, CA** - California Express Railroadians Show.
Info: www.californiaexpress.net.
- Feb 15-16 Buffalo, NY** - Western NY Train Show. Erie County Fairgrounds Event Center.
Info: www.wnyrhs.org.
- Feb 15 Houston, TX** - Greater Houston Train Show. Stafford Center.
Info: <http://sanjacmodeltrains.org>.
- Feb 22-23 Allentown, PA** - Spring Thaw Train Show. Allentown Fairgrounds Ag Hall
Info: www.allentowntrainmeet.com.
- Feb 22 Vancouver, WA** - SP&S Railway Historical Society Swap Meet..
Info: www.spsrhs.org.
- Feb 28-29 Fletcher, NC** - Asheville Train Show. WNC Agricultural Center.
Info: www.asheville-trainshow.com.
- Mar 7-8 Denver, CO** - Rocky Mountain Train Show at the Denver Mart.
Info: <http://rockymountaintrainshow.com>
- Mar 7 Ft Wayne, IN** - Maumee Valley Railroad Club Model Railroad Show & Swap Meet..
Info: <http://maumeevalleyrailroad.com>.
- Mar 8 Clark, NJ** - Jersey Central NRHS Train Show. Mother Seton High School.
Info: www.jcrhs.org.
- Mar 8 Old Greenwich, CT** - Southern Connecticut Model Train Show.
Info: www.southerncttrainshow.com.

Send listings to: transportsim@aol.com

There is no charge for calendar listings. Train shows must include dealers of authentic railroad memorabilia or related material, and auctions must include at least 20 lots of railroadians. Other events must be directly related to railroad history (special exhibitions, lecture programs, conventions, limited excursions, etc.). Regular monthly group meetings, model train meets & scheduled tourist train trips are not eligible, unless related to a special event. Events are listed space permitting, at the editor's discretion. Listings are subject to error or change. Always check show web sites before traveling.

Visit www.klnl.org for Updates



KEY LOCK & LANTERN

Can Help Promote Your
Auction, Show or Event

With Advertising in KL&L Publications

1600+ Facebook Followers

1200+ Monthly Web Visitors

750+ Newsletter Readers

Contact KL&L Editor Dave Hamilton at
transportsim@aol.com

The New York-Pennsylvania COLLECTOR

Living with Antiques, Art & Americana

A Monthly Publication Featuring News &
Articles About Antique Collecting & History



Auction & Show Listings
Club Meetings & Events
Identification & Fakes
Antique Restoration Tips
Museums & Historic Sites
Dealer & Flea Market Ads

Subscription & Advertising Information:
1-800-518-0875 www.nypa-collector.com

WANT ADS & ANNOUNCEMENTS

Want Ads are FREE to Key Lock & Lantern members on a space available basis, in the KL&L Magazine and the KL&L News. E-mail to j944wb@aol.com or mail to: John & Marie Brainard, 35 Nordhoff Place, Englewood, NJ 07631

For Sale

For Sale: Railroad Artifacts & Memorabilia: Everything from keys, locks & hardware to china, paper, and more. Jane Silvernail. Website: <http://timestreasures.rubylane.com> or contact by e-mail at timestreasures@outlook.com.

For Sale: Switch Lamps, Markers & Parts. Website: JerrysRRStuff.com. Phone: 206-778-0386. E-mail: jerry@JerrysRRStuff.com.

For Sale: CB&Q RR Special Police badge and CB&Q RR Special Watchman badge. Will consider trade for other RR police badges. Dan Pottebaum. windsor5207@yahoo.com or call 712-274-8847.

For Sale: Keys, Locks, Lanterns, Ephemera, etc. Mostly NE including ME narrow gauge. Jerry Devos, PO Box 376, Towaco, NJ 07082. 862-222-5264. jdevos99@aol.com.

For Sale: Original steam, electric & diesel locomotive builders plates. Currently wide range of N&W diesel plates in stock. E-mail for current list: rjmuldowney@comcast.net or call Ron Muldowney at 609-397-0293.

For Sale: Old (1850's-1890's) New England railroad paper items. Lots of old name railroads, also Rutland, Central Vermont, Housatonic, Fitchburg, etc. Good to excellent condition. Contact Chuck Hall at 315-824-1674.

For Sale: *Railroadiana II: The Official Price Guide for the Year 2011 and Beyond*. Softcover, \$65 + shipping. Railroad Memories. 303-759-1290. www.railroadmemories.com.

For Sale: Dressel switch lamp, complete, excellent condition, no RR markings, \$250 + shipping. Also have 6-chime Central Vermont whistle & Maine Central counter-top ticket case. Richard Gibbons, 1050 East Brigham Rd, Unit 59, Saint George, UT 84790. gibbons@infowest.com. (435)-634-8205.

For Sale: Railroad locks, keys and more for sale. For more information, visit website at www.angelfire.com/biz/toysoldierhq/Railroad.html. Kent Sprecher back in the hobby!

For Sale: New York State Railroad, Canal and State Engineers reports. Will also trade for editions that I need. Contact Dave Hamilton at transportsim@aol.com to swap lists.

Wanted

Wanted: Oil type cab lamp with shade. Contact Aubrey Keller at akeller@utm.edu or call 731-587-4723.

Wanted: New York Westchester & Boston Ry Signal lock and other hard to find signal locks such as Long Island and any I do not have. Contact Jeff Irvin 2524 Big Bear Ln. Indianapolis, IN 46217 - j.irvin@sbc.global.net or 317-882-2336

Wanted: Switch keys from the L&HR, WVRR, SRR, NY&ERR. Stock Certificates: Wawayanda RR, Mine Hill RR, Pequest & Walkill RR, and Southfield Branch RR. Phil Simms, 8 Still Waters Drive, Campbell Hall, NY, 10916. Call 845-427-5051.

Wanted: Looking for small hardware items from the Northampton & Bath RR such as keys, badges, brass time/tool checks or any other significant small item. Have some interesting items to trade from US Steel roads. Contact Jeff Wolfe at lobowolf@aol.com.

Wanted: Factory marked inspector lamps. Must be complete and in reasonably good condition. Marked globe a plus. Need RDG C&O B&O GCT SOURY (or S RY) Erie Acme model plus others I may not be aware of - Contact Larry Davis, 5110 Hollywood Ave; Shreveport, LA 71109. Phone: 318-469-7825.

Wanted: Pennsylvania RR Macbeth #220 pearl glass globes with straight letters 3/4" in height, "PRR" in rectangle. Need clear and red globes. Have traders or cash. Joel Shaw, 31 Sandle Drive, Fairport, NY 14450. Phone: 585-385-3776.

Wanted: Delaware Lackawanna & Western keys & locks. Contact Bill Roberts. 8812 Mourning Dove Court, Gaithersburg, MD 20874. E-mail: whadynrob@gmail.com or call 301-977-3025.

Wanted: Keys, locks, lanterns, China, builder plates from Oliver Iron Mining and Duluth area railroads. Email: thornton454@hotmail.com

Wanted: Keys, locks, lanterns, fly fishing leader boxes, passes, buttons & other from the Denver, South Park & Pacific Ry - Denver, Leadville & Gunnison Ry - Union Pacific Denver & Gulf - Colorado & Southern Ry. Leonard Walmsley, 11044 Claire Circle, Northglenn, CO, 80234 or call 303-429-8674.

Wanted: Switch key for the PCRY (Pacific Coast Railway), not PCRR (Penn Central), probably made by Fraim. Contact Steve Mott at 805-544-5339 or by e-mail at sjmott2359@sbcglobal.net.

Wanted: Brass burner for a Dressel double wire tall globe railroad lantern & twist off font with burner for a Dietz 39 Vulcan wire frame. Also buying Western Maryland locks, keys, lanterns & globes, and C&PRR items. Joseph G. Hauger, 401 2nd St., Terra Alta, WV, 26764. E-mail address: whiteoak4@frontier.com or phone 304-789-2229.

Wanted: Postcards - Pre-1930 views of US railroad & trolley depots, also related tracks & structures. Tom Hassenmayer, PO Box 3916, Woodbridge, CT, call 203-387-2877, or e-mail rrtdepotman@yahoo.com.

Wanted

Wanted: Lanterns, globes, locks, keys, hat badges, RR PD or RR Fire Dept items, Long Island RR & Staten Island Rapid Transit. Bob Myers, 36 Pine Hollow Lane, Greenlawn, NY 11740. 631-757-9540. robertrail@yahoo.com.

Wanted: Items from the Surry, Sussex & Southampton Ry. Jerry Rakes, PO Box 384, Tappahannock, Va 22560.

Wanted: B&O Yale signal locks, cast B&O or Y&T Butler, Charleston, Delphos, Ohio River & Shenandoah divisions. David W. Robinson. dwrbo@aol.com. 540-820-8998.

Wanted: Factory marked ICRR tall lanterns by Defiance, Universal Spinning & Stamping, Prier Brass Co. Globe not important. Good condition & complete. Larry Davis, 5110 Hollywood Ave, Shreveport, LA 71109. 318-469-7825.

Wanted: Railroadiana from Huntington & Broad Top Mountain Ry (and Coal Co.). PA shortline 1850's-1950's. John Houpp - call 484-268-6698 or e-mail jdhoup@hotmail.com.

Wanted: Cast brass fancy back railroad switch locks. Instant cash paid for any lock not already in my collection. I also have a list of approximately 125 rare cast switch locks for sale or trade. Contact Warren at 239-440-4254 (new number) or warrennyergesjr@hotmail.com.

Wanted: Lanterns, locks, timetables & passes of all types from Southern Ry, Richmond & Danville, East Tennessee Virginia & Georgia Ry, Washington & Old Dominion, Washington Ohio & Western, Washington & Ohio, Alexandria Loudoun & Hampshire. Contact Andrew Ramsay at aramsay@ieee.org.

Wanted: Diesel locomotive builders plates from the following: Canadian National / Northern Alberta Ry London built or Pointe St. Charles rebuilt GMD-1; Canadian Pacific Montreal Locomotive Works RS-18; former Pacific Great Eastern / British Columbia / BC Rail locomotives; former Northern Alberta Ry / Canadian National GP-9; any EMD NW-5 plate. Contact Corey Panchyshyn at bcr_766@hotmail.com.

Wanted: Diesel builders plates, especially EL and other northeastern US railroads. Have plates to trade. E-mail: RBombel@aol.com.

Wanted: Railroad Horse Car Bells. Will buy one or an entire collection, or have bells to trade. Contact Roger Plaquet at rplaquet@ciaccess.com or call 519-354-4538.

Wanted: Canadian switch keys. Looking for keys from Canadian roads for my collection and display in a small museum. Will purchase or have some U.S. keys for trade. Contact Brad at alco1310@sympatico.ca

Wanted: LV, D&H, CV switch, signal, mechanical, motive power dept. lock sets. Uniform cap badges. Anything northeast. Chuck Hall. 315-824-1674. E-mail: mollymussonhall@yahoo.com.

Wanted: Amber (yellow) glass 6.5" diameter lens for a Atlantic City RR (Phila. & Reading) Semaphore used about 1890. This is slightly convex un-fluted that fit in the moving three color frame of a semaphore signal. Also need design of fish tail wood blade to replace my mistaken pointed wood blade. W. G. Cook PRR6986@Yahoo.com. 518-784-2137 May be interested in finding a proper home for entire signal including CNJ light unit to power it.

Wanted: Switch keys from The L&HR, NYS&W, M&E, L&NE, NY&GL, Wharton & Northern, Mine Hill RR and other NJ short lines. Premium price paid for NYS&W "fancy back" cast heart shaped lock. Chip Greiner, P.O. Box 125, Bogota, NJ 07603 email rrbadges@aol.com.

Wanted: Railroad Police Badges and Railroad Police artifacts such as police office signs, old police department photos, early uniforms and patches, etc. Need NYO&W RY Police "Lieutenant" rank badge and will pay premium price or trade. Chip Greiner, P.O. Box 125, Bogota, NJ 07693. Email rrbadges@aol.com.

Wanted: Coat button from West Penn Railways (W.P. Ry), southwest Pennsylvania trolley system. Will pay good or trade other trolley line buttons. Also, early PRR buttons with fancy letters. Jim Chew, 900 N. 4th Street, Jeannette, PA 15644, (724) 523-6889.

Wanted: Photo of NY State Railways Syracuse Lines car #1024. Also any photos of Syracuse trolleys on Irving Ave and around Syracuse University. Also, globe for an SG&L Lake & River lantern, large 6x6 "government" style. Always looking for PRR Buffalo Division material. Dave Hamilton. transportsim@aol.com. 518-439-8392.

Wanted: Raritan & Delaware Bay Railroad and New Jersey Southern Railroad hardware & paper, especially locks & keys. Dan Allen, 147 Atsion Rd, Medford, NJ 08055. E-mail: njsr@at.aol.com.

For Trade

For Trade: LC&N Co Casey lantern, 6" Penna Co globe, D&RGRR cast lock by Dayton, SRRR, GF&ARY, C&A Ry tapered keys, T&OC dessert knife by R&B. I collect southern lower Michigan and also want 6" colored globes. Walter Sulowski at walter-sulowski@msn.com or 313-295-7306.

Want Your Message to Get More Attention?
Upgrade to a Display Ad for as little as \$15
Contact Dave Hamilton: transportsim@aol.com

KEY LOCK & LANTERN

Index on Computer CD

Index of all KL&L Magazines from Issue #1 through Issue #151 in searchable Acrobat (PDF) format. \$7.95 postpaid. Contact:

Marie Brainard
35 Nordhoff Place
Englewood, NJ 07631-4810

Membership Brochures

Are Available in PDF Format for Printing & Distribution at Railroadiana Shows, Historical Museums, Railroad Club Meetings & Other Events

Download the Current Version at
www.klnl.org



All submissions for the KL&L magazine, news items for the digital KL&L News & general inquiries should be sent to:

KL&L President & Editor
David Hamilton
244 Elm Ave
Delmar, NY 12054
E-mail: transportsim@aol.com

Send membership applications, dues payments, and address changes to:

KL&L Chairman John Brainard &
VP-Membership Marie Brainard
35 Nordhoff Place
Englewood, NJ 07631
E-mail: j944wb@aol.com

Join or Renew Your
KEY LOCK & LANTERN
Membership Online at
www.klnl.org

KL&L Membership Form (2019-2020 Membership Year)

Please make check or money order payable to Key, Lock & Lantern, Inc. and forward to: Marie Brainard, KL&L Membership, 35 Nordhoff Place, Englewood, NJ 07631-4810

Name _____

Representing (business or museum, if applicable) _____

Address _____

City _____ State/Prov _____ Zip/Mail Code _____

Phone _____ E-mail _____

Basic membership at \$30 per year (1st Class mailing in USA) or \$40 per year (non-USA).....\$ _____

Contributing membership at \$35 per year, to help support KL&L(1st Class mailing in USA)..... \$ _____

Additional family members at \$4 per person (only one magazine is sent per family).....\$ _____

Additional Donation.....\$ _____

Enclosed is my check / money order payable to Key Lock & Lantern, Inc. for.....\$ _____

Membership in KL&L includes 4 issues of the magazine, and the annual membership period begins in July of each year. New members joining before April will receive all previously published magazines for the year, and will be due for renewal in July. New members joining in April, May or June will have their dues applied to the next membership period, beginning with the Jul/Aug/Sep issue, unless otherwise requested.