



KEY LOCK & LANTERN NEWS



Nov/Dec 2020

Issue No.59

The Bi-Monthly Digital Supplement to Key Lock & Lantern Magazine



**Holding a Train Show
During the Pandemic**

**Key Lock & Lantern
Convention Update**

**Railrodiana Auctions
Continue Virtually**



KEY LOCK & LANTERN NEWS



The Bi-Monthly Digital Supplement to Key Lock & Lantern Magazine
WWW.KLNL.ORG

November/December 2020 Issue #59

From the President's Desk	3
Railroad Event Calendar.....	3
Key Lock & Lantern Convention Update.....	4
Railroad Memories Auction.....	6
Rail & Road Auction.....	8
Full Schedule of Online Auctions.....	10
Holding a Train Show During a Pandemic.....	14
KL&L Membership Renewals Coming Soon.....	19
Membership Application	27

KL&L News Editor.....David Hamilton

Production Facilities.....NY-PA Collector Magazine

Send News Items for Publication to the Editor at:

Transportsim@aol.com

The Key, Lock & Lantern News is published bi-monthly as a digital supplement to the quarterly Key, Lock & Lantern magazine. Recipients may repost or forward complete and unmodified copies of this newsletter to other hobbyists and websites, but its content may not otherwise be copied or distributed without the permission of the KL&L Board of Trustees. Copyrights are held by the respective authors and photographers. Excerpts of news items may be published with the credit line "Key, Lock & Lantern News"

Annual membership dues for Key, Lock & Lantern are \$30 for residents of the USA, and \$40 for outside of the USA (by money order or electronic payment in US funds). Members receive four issues of the quarterly KL&L magazine, delivered via first class mail. Memberships for additional family members are \$5 each (only one magazine is sent per family). Applications for membership & address changes should be forwarded to the VP-Membership at the e-mail address listed at right. Online membership forms and dues payment via Paypal are available at www.klnl.org.

Contributions of articles, photos, and news may be forwarded to the editor at the e-mail address listed at right. Hard copy articles should be written on 8 1/2 x 11" paper, and typed or neatly printed. Photos should be sent with a caption card attached which includes the contributor's name, phone number, and description. Photocopies of advertising and supply catalogs are acceptable. The submission of material in digital format is preferred, with text files in DOC, TXT, or PDF format, and images in JPG, TIF, BMP or GIF format. Digital files may be sent by e-mail or on a computer CD or flash drive. Please contact the editor regarding optimum file sizes and formats.

By submitting material to Key, Lock & Lantern, the contributor grants permission for use in any edition of the KL&L magazine, digital newsletter, websites, and other publications. All material will be retained by KL&L for future use, unless the contributor specifically requests that it be returned, and includes a suitable, self-addressed, stamped envelope. Current deadlines are listed in the Key, Lock & Lantern Advertising Guide, which is available on the KL&L website at www.klnl.org, or by contacting the editor.

Key, Lock & Lantern

A non-profit membership corporation dedicated to the preservation of transportation history and railroad memorabilia

The mission of Key, Lock & Lantern is to gather and publish information on the history of the transportation industry, and to support the preservation of railroad artifacts. KL&L members have an interest in all aspects of railroad & transportation history, from research and preservation projects to the conservation and restoration of all types of historical memorabilia. Originally formed in 1966, Key, Lock & Lantern, Inc. was officially incorporated in 1988 as a non-profit, educational, membership corporation in the State of New Jersey, under the provisions of Section 501(c)(3) of the United States Internal Revenue Code. Membership is open to anyone with an interest in transportation history and in achieving the goals of the organization.

Officers & Trustees

Chairman of the Board

John Brainard
j944wb@aol.com

President & Editor

David Hamilton
transportsim@aol.com

VP- Membership / Treasurer

Marie Brainard
j944wb@aol.com

Secretary

(Rotates Among Trustees)

Chaplain / Sgt at Arms

Chip Greiner

Counsel

Jeremy Tuke

Historian

Peter Gores

Trustees at Large

Lyman Gray, Sam Lombardi, Joel Shaw, Sam Ferrara, Phil Simms, Leonard Gordy, Bob Lipman, Randy Bushart, William Sternitzke, Bill Roberts, Bob Myers & Joey Senese

www.klnl.org



For Current News
"Like" KL&L on

facebook

A Light at the End of the Tunnel

Normally, this issue would be filled with reports of the many fall historical society conventions & train shows, as well as tourist railroad and museum activities. Sadly, there is much less than usual to write about as the year 2020 comes to a close. While some museums and scenic railroads were able to resume limited operations, a late summer resurgence of the virus resulted in the cancellation of many shows and events.

After changing the date of the KL&L Convention several times, we decided to simply postpone it until 2021, when things were expected to return to normal. However, with a holiday season rise in COVID cases and slow distribution of the vaccine, it appears that it may take longer than expected to get back to "normal."

Typically, we would be sending out registration forms for the KL&L Convention and actively promoting the annual event in this issue. Although I once again delayed the date of publication with the hope of seeing some positive developments, many elements of uncertainty remain.

I plan to publish the Jan/Feb and Mar/Apr 2021 editions of the *KL&L News* on schedule, and will have an update and additional information in the next issue. We are still keeping the convention on the calendar for the May 7-9 weekend, and we will monitor the situation regarding changes to the travel and meeting restrictions that are currently in place. We are also confirming the projected availability of the various venues and activities. Hopefully, some good news will be coming soon.

On a positive note, most railroading auction houses had already introduced online bidding options prior to the onset of the pandemic, and have been able to continue their sales. Several large collections have been on the market, and despite the overall condition of the economy, there has not been a noticeable decline in demand for the "good stuff."

Many railroad historical groups have held virtual meetings through Zoom and other services, and have expanded their online presence via Facebook and YouTube videos. While in-person meetings can never be replaced (and will hopefully make a return soon), many groups have benefitted from this nudge in the direction of utilizing current technology.

With few train shows and events to attend, many of us have had some spare time to tackle items on the "to do" list. I have been able to sort through some of my boxes of paper and timetables and transfer some material to a storage unit, much to the delight of other members of my household. Once the shows start up again, I'll have some things ready to go.

The year 2020 was a tough one for most of us, and the new year will probably remain the same for a while. It looks like there is finally a proverbial light at the end of the tunnel, though. In the meantime, I hope that everyone stays healthy, and is able to make the best of the situation.

Thanks for everyone's ongoing support, and stay tuned to the KL&L Facebook page & website for news updates.

Dave Hamilton

KL&L President & Editor

Railroad Event Calendar



Upcoming historical society conventions, special events, railroading shows & auctions. Listings subject to change. Check show web sites before traveling and visit www.klnl.org for updates. See submission guidelines at the end of the calendar.

Events that have been cancelled or rescheduled due to COVID-19 have their date crossed out. Other changes are possible - check the organizations websites.

Look for Advertisements in this Issue & on the Key Lock & Lantern Website for Events Shown in Blue

- Feb 11-15 Online Auction** - Sweetheart Express Auction.
Holabird Western Americana Collections.
Info: www.fhwac.com.
- ~~**Feb 13 Jacksonville, FL**~~ - Jacksonville Rail Fair by
Golden Spike Enterprises.
Info: www.gserr.com.
- Feb 20 Online Auction** - Rail & Road Auctions online
railroading consignment auction.
Info: www.bidrar.com.
- Feb 21 Catalog Auction** - Railroading Consignment
Auction. Railroad Memories.
Info: www.rmmemories.com
- Feb 26-27 Fletcher, NC** - Asheville Train Show. WNC
Agricultural Center.
Info: www.asheville-trainshow.com.
- Feb 27 Lone Jack, MO** - Online railroading auction.
Dirk Soulis Auctions.
Info: www.soulisauctions.com.
- Feb 28 Catalog Auction** - Golden Spike Enterprises
Mail Bid Railroading Auction.
Info: www.gserr.com
- Mar 20 Lone Jack, MO** - Online railroading auction.
Dirk Soulis Auctions.
Info: www.soulisauctions.com.

Continued on Page 26

Front Cover: A locomotive from Boothbay Railway Museum on display at the 2018 Amherst Railway Society hobby show. The event has been cancelled for 2021.



A little under a year ago, as the world began shutting down in an effort to “flatten the curve” and stop the coronavirus in its tracks, the KL&L convention committee discussed the possibility of postponing the convention for a month or two. As the situation grew worse, the convention date was pushed into late summer, to a time when it was expected that things would return to normal. When that didn’t happen, it was decided to simply cancel the 2020 convention, and combine its activities with the 2021 event.

It is difficult to believe that a year later we are looking at how ongoing travel and meeting restrictions will impact our ability to hold the 2021 KL&L Convention in May. The big difference this year is that we now have several COVID-19 vaccines available, although distribution has thus far been a slow process. Instead of the situation getting worse, it truly seems as though things will start getting better.

The 2021 KL&L Convention still remains on the calendar for the weekend of May 7-9, 2021, at the Hotel Anthracite in Carbondale, PA. An excursion train on the scenic Stourbridge Line in nearby Honesdale is planned for Friday, May 7th, and the railroadians show, dinner, and programs are scheduled to take place on Saturday, May 8th. All events that were lined up for last year are still on the program for 2021.

The convention committee is in the process of confirming rates and availability at the various venues, and an updated registration packet will be put together before the end of February. If the virus situation appears to be heading in a favorable direction, online registration on the KL&L website will then be reopened, and printed forms will be mailed to all current members.

At the time of publication of this newsletter, there is still a great deal of uncertainty about the future impact of the pandemic. Restrictions on travel and events are in a constant state of change, depending on infection rates and mitigation programs. At present, quarantine and testing requirements make interstate travel extremely challenging, and business capacity limits still present obstacles to holding face to face events.

Our ability to hold the convention as scheduled will depend on the vaccine becoming widely available, a drop in infection levels, and a resulting relaxation of travel and event regulations. On a positive note, the restrictions that effectively banned all large group events in Pennsylvania were lifted at the end of December, but capacity limitations and social distancing requirements still remain in place.

We remain optimistic that we will begin to recover from this health and economic crisis and life will start returning to normal. In the meantime, keep the KL&L convention on your calendar for the May 7-9 weekend. For ongoing updates, visit www.klnl.org (be sure to clear the history & cache on your browser from time to time, so that current web pages are displayed), and follow the KL&L Facebook page.



KEY LOCK & LANTERN
Can Help Promote Your
Auction, Show or Event
Contact KL&L at transportsim@aol.com

Railroadiana Auctions - Spring & Fall - Brookline, NH

Railroadiana Consignment Auctions Held Each Spring & Fall

Brookline Auction Gallery LLC - 32 Proctor Hill Rd, Brookline, NH 03033

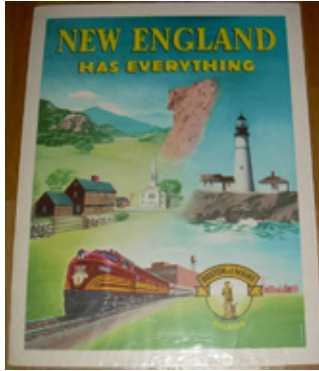
Auction information including photos: www.tagtown.net

Scott Czaja - Sales Manager (978) 779-2904

Highlights of Recent Sales



Concord RR Thompson Lantern: \$1700,
Triple Marked Boston & Albany New
England Glass Lantern: \$1750



Boston & Maine Railroad New
England Travel Poster with
Minuteman Logo: \$410



Grand Central Station Lantern with Green
Cast Globe: \$3100, New York New Haven &
Hartford - Hartford Division Thompson: \$2500



Cast Iron Railroad Crossing Stop,
Look & Listen Sign: \$400



Nickel Plate Road Berkshire #774
Number Board: \$2200



St. Albans Street Railway Dock
Master Hat Badge: \$625

Next Sale: April 16-17, 2021



Lehigh Valley RR brass top marker lamp: \$700
New England RR Fancy Cast Lock: \$1100



Boston & Maine RR Silver
Casserole Dish: \$800



Grand Trunk Railway Brass Lock: \$1800
Pennsylvania RR cast fixed globe: \$2900



Pennsylvania Railroad Gate Sign: \$400



New Haven RR Winsted, CT
Wax Sealer: \$1100



Central Vermont Railway Ticket Office &
Pullman Reservations Sign: \$675

Now on LiveAuctioneers.com - We also accept absentee bids via: e-mail & mail
Quality consignments are welcome for future sales - call Scott or email: sczaja@hotmail.com

Railroad Memories Continues the Sale of Several Prominent Estates & Collections

Railroad Memories auction #108 was filled with the usual excellent selection of rare memorabilia, much of which came from the collections of Warren Scholl and Neil Shankweiler. Despite the state of the economy, there did not seem to be any lack of interest in the “good stuff” which brought high prices. Railroadiana from these collections and other consignments will be featured in auction #109, which closes on February 21, 2021. *All photos, prices, and descriptions courtesy of Railroad Memories Auctions. Prices do not include any applicable buyer’s premium or shipping.*



A Santa Fe “Station Baggage” logo cap badge by the Los Angeles Rubber Stamp Co. sold for a \$2600 bid.



A nickel plated presentation lantern with both Adams & Westlake and Hart & Duff hallmarks sold for \$975.



A \$650 bid was needed to take home this 1900 annual pass from the Colorado & Southern Railway.



This AT&SF California Poppy demitasse set by Bauscher went to a new home for a high bid of \$300.



A \$9750 bid bought this number plate off Pennsylvania Railroad Altoona-built 4-6-6-4 No. 6192.

Continued on Page 20

RAILROAD MEMORIES

Proudly announces Auction 109

Closing February 21, 2021

This auction features continuing offerings from the estates of Warren Scholl & Neil Shankweiler along with several others. Below are some of the highlights in this issue. Printed full color catalogs available for \$20 each that includes a complete price realized list.



Capitol Limited platform sign.



Badges including several rare Santa Fe, D&RGW, PRR & more



Narrow gauge builders plate from a C&S snow plow rotary engine plus many more builder & number plates

300 UNIFORM
BUTTONS

WAX SEALERS



Lanterns including this rare UPD&G, as well as C&S, CMRY & D&RG



Santa Fe Depot Clock



Central Pacific key



Florence & Cripple Creek



Locks including Santa Fe System, D&RG Fancyback, Keen Kutter



China including Bleeding Blue, Columbian, DL&W Hoboken & so much more



Fred Harvey including this rare Paisley Service Plate



PASSES



Silver including this Burlington Route Champagne Bucket

WHISTLES

PO BOX 415
GEORGETOWN, COLORADO 80444

303-569-5185

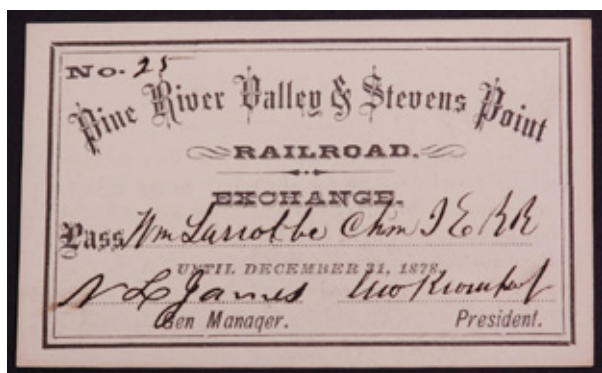
website: www.railroadmemories.com

email: railroadmemories@gmail.com

ADVERTISING

Rail & Road Kicks Off Online Railroadiana Consignment Auctions with October Sale

As a long-time collector of railroadiana and automobilia, Derek Thomas often found himself wishing that there was an auction house that specialized in transportation memorabilia near his home in central Indiana. After working in the auction business for over ten years, he decided that the best way to make that happen was to do it himself. Following several initial automotive and railroad art sales, Rail & Road Auctions entered the railroadiana market with an online consignment auction in October. This successful first sale will be followed by a combined railroadiana and fine art auction on February 20th. *All photos, prices, and descriptions courtesy of Rail & Road Auctions. Prices do not include any applicable buyer's premium or shipping.*



A \$180 bid was needed to purchase this 1878 annual pass from the Pine River Valley & Stevens Point Railroad.



A 34 3/4" x 34 3/4" metal logo sign from the Boston & Maine Railroad brought a high bid of \$200.

KEY LOCK & LANTERN

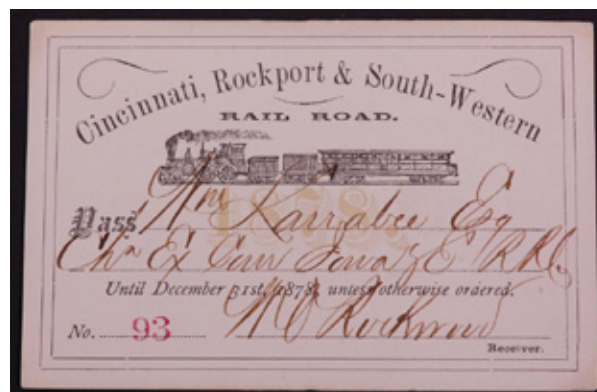
Ads Reach Serious Railroad Enthusiasts
Contact KL&L at transportsim@aol.com



A CT Ham No.3 brass conductor's lantern with unmarked globe sold for a reasonable high bid of \$140.



An EMD builders plate from SD45 #6133 used by the Pennsylvania RR, Penn Central & Conrail sold for \$275.



A Cincinnati Rockport & Southwestern Railroad 1878 annual pass went to a new owner for a \$170 bid.

Continued on Page 16

Online Railroading & Fine Art Auction

Saturday, February 20, 2021



www.BIDRAR.com
 765-588-3400
 Bid Live Online, Phone or Absentee

First Quarter Auction Calendar is Filled with Sales of Several Large Collections

While many train shows that are traditionally held during the early months of 2021 have been cancelled due to the pandemic, there is certainly no shortage of online auctions scheduled for the start of the year. The estates of several prominent collectors are in the process of being sold, along with a number of other well-known collections that are being thinned out. Throw in some high-end artifacts from individual consignors, and the auction line-up is impressive over the next few months.

The railroadiana collection of Gary Nelson is included in a multi-day online auction by Holabird Western Americana Collections of Reno, Nevada. Scheduled from February 11th through February 15th, each day's live bidding includes a variety of antiques and memorabilia. An online catalog is available at www.fhwac.com.

Rail & Road Auctions will hold a railroadiana and railroad fine art auction on February 20th, continuing with the sale of several collections that began last October. In addition to some higher end pieces of original art, a variety of hardware and paper are offered in the online-only auction. To view the catalog and register to bid, visit www.bidrar.com.



Several pieces of high-end fine art will be sold in the next Rail & Road auction on February 20th, including this original New York Central calendar painting.

Several other railroadiana auctions are scheduled for the spring, including the Brookline Auction Gallery semi-annual sale on April 16th & 17th. A catalog has not yet been posted, but some preview photos are available at www.tagtown.net. Brookline has memorabilia from several large New England and New York State collections in the pipeline, so there will be even more to come in the fall.

For auction and event updates, check out the KL&L event calendar at www.klnl.org on a regular basis (be sure to clear your browser history & cache to view the most current version of the page). Also, "like" Key Lock & Lantern on Facebook to receive news of auctions and events.



The collection of Gary Nelson includes a variety of railroad memorabilia from railroad across the continent.

On the following day, February 21st, bidding in the Railroad Memories catalog and online auction #109 closes. Artifacts from the collections of Warren Scholl and Neil Shankweiler are supplemented with the usual selection of consignments. Online bidding is open at www.railroadmemories.com.

Dirk Soulis Auctions will be selling the collection of Jim and Kim Prokes on February 27th, in an online sale at their Lone Jack, MO gallery. This sale will be followed by another on March 20th, featuring the collection of Steve Cregut. Both collections include a variety of rare lanterns, paper, and timetables. Bidding information and online catalogs will be posted soon at www.soulisauctions.com.



One of the many rare lanterns to be sold by Dirk Soulis in auctions on February 27th and March 20th.



**BEWARE
OF THE
TRAINS**

All Aboard

The Sweetheart Express

Live Internet Auction

February 11, 12, 13, 14, 15th 2021

View Catalog & Bid Online at
www.FHWAC.com

Gary Nelson Railroad Collection

Model Trains * Engines * Accessories * Buildings
Tracks * Multi-Signal Lamps * lanterns * Signal Signs
Lionel * MTH * American Flyer * Buddy "L"

Stewart Mackenzie Montana Collection

Mining & Business Stocks, Saloon Letterheads, Yellowstone

Petwer Statues * Western Mining * Gold Rush
Ingots * Numismatics * Rare Firearms * Art
Plus Many More Collecting Categories!!

**RAILROAD CROSSING
STOP
LOOK AND LISTEN**

Bi-Monthly Auctions ~ Always Accepting Quality Consignments!



Holabird Western Americana Collections, LLC

Reno, Nevada | Toll Free (844) 492-2766

FEBRUARY 2021

Single-Owner Railroadiana Auction

The Jim and Kim Prokes Collection | Saturday, Feb. 27th at 10 am Central



Drumhead
Glass Lens for
the El Capitan



Red to Clear Conductor's
Lantern Signed Crerar Adams

The Jim Prokes Collection
of Rare Timetables



Featuring their collection of Rare Timetables gathered over 40-plus years, along with good Lanterns, Signs, China, Ash Receivers, Step Boxes and Much More.



Kelly Presentation
Lantern Engraved to
F.H. McDermott



Pullman Palace Car
Engraved Globe
Brass Lantern



Two-Color Teal Blue
Engraved Charter
Oak Range F. McG



Located just outside of KANSAS CITY, MISSOURI
529 W Lone Jack Lees Summit Road, Lone Jack, MO 64070
SoulisAuctions.com | 816.697.3830

March Railroadiana Auction

Saturday, March 20 at 10am Central time

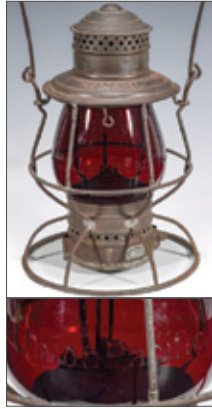
The collection of Steve 'Packrat' Cregut, including a 50 year Collection of Keys, Hardware, Advertising, Ephemera, Buddy L Outdoor Train Set and More – featuring a selection of very, very rare lanterns.



Union Pacific Rail Way with Signal Green Globe



"UNION PACIFIC" Frame with the ONLY KNOWN Cobalt Blue Embossed "Extended Base" Matching Globe



"U.P.R.R.", Brass Top George M. Clark with Extended Base Globe



"B & M. in Neb." Unique Mid-1870s Frame by "M.M. BUCK" with Original Globe



M.M. BUCK Presentation Lantern



Salesman's Sample Rail Car Coupler Circa 1905



A Very Rare "A.T. & S.F.R.R." 1870s Brass Top Bellbottom



Colorado Midland Handlan Buck



1880s Denver & Rio Grande Brass Top Bellbottom with Large Fancy-Letter Globe



Rio Grande Western with Unique Frame signed Star Headlight



A Very Rare "Santa Fe Route" Signal Green Globe ("Backwards U") with Extended Base



Presentation Lantern Inscribed on Frame and Globe

The estate archive of J.A. Burke, supervisor of air brakes who piloted the maiden run of the Super Chief and other high speed trains of the day. Burke, who was born in 1883, is the engineer pictured in countless Santa Fe promotional materials leaning out the cab window of an early Streamliner.



Located just outside of KANSAS CITY, MISSOURI
529 W Lone Jack Lees Summit Road, Lone Jack, MO
SoulisAuctions.com | 816.697.3830

Holding a Train Show During a Pandemic: Schoharie Valley Railroad Museum Volunteers Make it Happen

When Thom Fries started his retirement job as Director of the Schoharie Valley Railroad Museum in late 2019, he immediately began making plans to expand the programs offered by this small historic site located on the edge of New York's Catskill region. One item that was high on the list was to hold a train show that would serve as both a way to introduce new visitors to the museum and as a fund raising event. The first annual train show was scheduled for the Spring of 2020 in the former creamery building on the museum grounds in Schoharie.

Vendors and exhibitors were excited about having a new show in the area, and table reservations soon began coming in. Then came the pandemic, the closure of businesses, and the cancellation of almost every event in the railroad hobby. The Schoharie Valley Railroad Museum show was rescheduled to October, with the expectation that the virus would subside by then.

When the late-summer resurgence began, most rescheduled events were cancelled, but Thom Fries was determined to make the show happen. With the show taking place in a museum meeting facility, as opposed to a commercial venue,



The Schoharie Valley Railroad Museum preserves the history of this eastern New York shortline. Bill Moll photo.

Show occupancy was limited to a maximum of 50 people at any given time, including staff and exhibitors. Throughout the building, signage was posted that guided attendees in maintaining the necessary social distancing of six feet and reminding them that masks were required to be worn at all times. Museum volunteers were assigned to various locations to facilitate the smooth flow of visitors around the show and museum exhibits.

Everyone who entered the show was required to provide contact information and had their temperature taken with an infrared thermometer. If anyone was in need of a mask, they were supplied with one, and hand sanitizer was available at various locations. Every aspect of the plan was designed to provide the safest possible environment for participants.

Continued on Page 15



The first annual train show was held in the old Borden Creamery on the museum grounds. Bill Moll photo.

it was possible to rearrange things as needed. He reviewed the CDC and state guidelines and made necessary adjustments to the table layout and show admission procedures. A written plan was developed and submitted to the local health department, which gave its seal of approval.

The creamery building is used by the museum's parent organization, the Schoharie Colonial Heritage Association, for meetings, antique shows, and performances, so it offered a generous amount of space on two floors. To allow for the required social distancing, 32 tables were available to the 14 vendors who exhibited. Due to these limitations, it was necessary to turn some potential exhibitors away.



Train show attendees waited patiently outside for their turn to enter the creamery building. Bill Moll photo.

Schoharie Train Show

Continued from Page 14

The weather on the October 3rd show date turned out to be nice, which was fortunate for members of the large crowd who waited outside of the facility for their turn to enter the show. Everyone was happy to be able to attend a train show, and most visitors were good-natured about having to wait in line until a “slot” opened up for them to enter the building. At the end of the day, almost 200 people had passed through the door - a very good attendance figure for a small rural show.

The efforts of museum director Thom Fries and his group of volunteers from the Schoharie Colonial Heritage Association (and some railfan friends) were much appreciated by those who attended the show. The vendors who participated were very grateful that the museum was able to arrange the event, and they plan to return for future shows. By any measure, the show was a success under normal circumstances, and even more so, given that it was held during the pandemic.



Limited occupancy at the show allowed for visitors to move about freely while maintaining spacing. Bill Moll photo.



Wide open spaces took the place of the usual tight rows that are often found at train shows. Bill Moll photo.

While it is obviously not practical for larger shows to adopt plans of this type, the Schoharie Valley train show serves as a model for how a small event can be held during a public health crisis. Hopefully, the need for such a plan will soon disappear, but it is encouraging to see that one is possible if it is necessary.

Now that the goal of holding a train show has been achieved under the most challenging of circumstances, director Thom Fries is now looking ahead to the museum’s next season. With displays of railroad memorabilia and rolling stock from local shortlines Schoharie Valley RR and the Middleburgh & Schoharie RR, the museum is worth a visit. We’ll take a closer look at the exhibits in a future issue of the *KL&L News*, once things start returning to normal and the museum is open for the season.

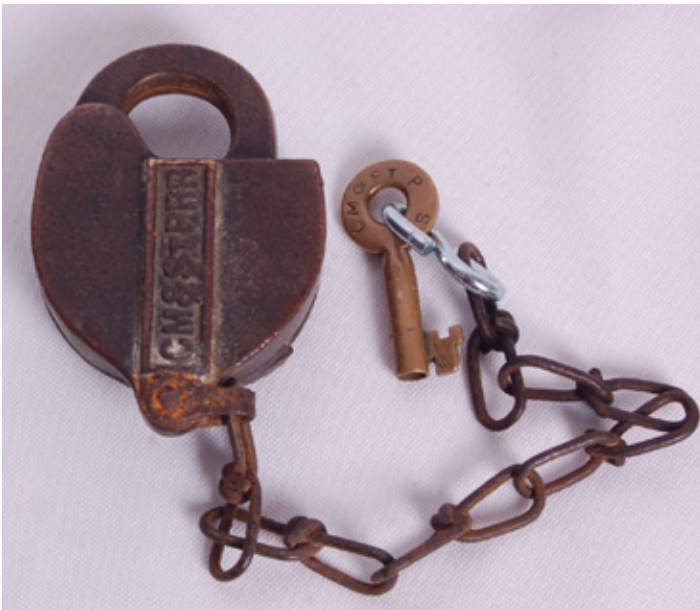
For more information about the Schoharie Valley Railroad Museum, visit their website at www.schany.org, and follow Key Lock & Lantern on Facebook for news on upcoming shows and events.



A plan for a scaled-down event allowed for the Schoharie Valley museum’s train show to take place. Bill Moll photo.



Train show attendees were also able to visit the Schoharie Valley Railroad Museum’s exhibits. Bill Moll photo.



A nice CM&STPRR brass switch lock with matching key by Loeffel Holz & Company sold for a high bid of \$80.



A \$775 bid was needed to purchase this Milwaukee Road aluminum Hiawatha passenger car logo from coach 546.



A \$140 bid took home this 1878 annual pass from the Pittsburgh & Castle Shannon RR issued to Wm. Larrabee.

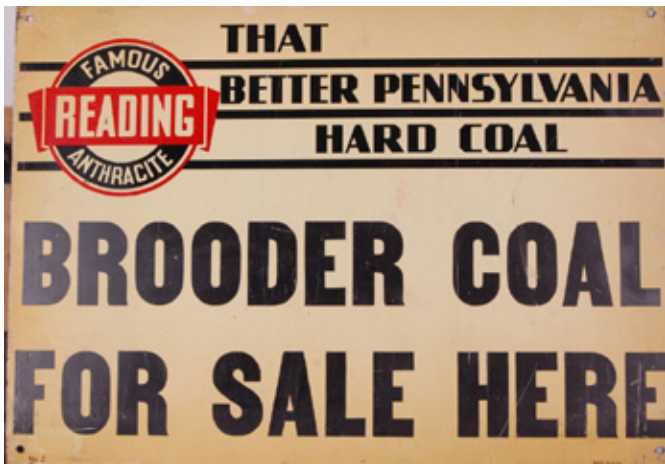


An American Express Company 17x13" porcelain sign with moderate chipping on both sides sold for a \$225 bid.



A ticket case from the Chicago, North Shore & Milwaukee Railroad went to a new owner for a \$325 bid.

Continued on Page 17



A Reading Anthracite coal 20x14" metal logo sign with minor chips went to a new home for a high bid of \$100.



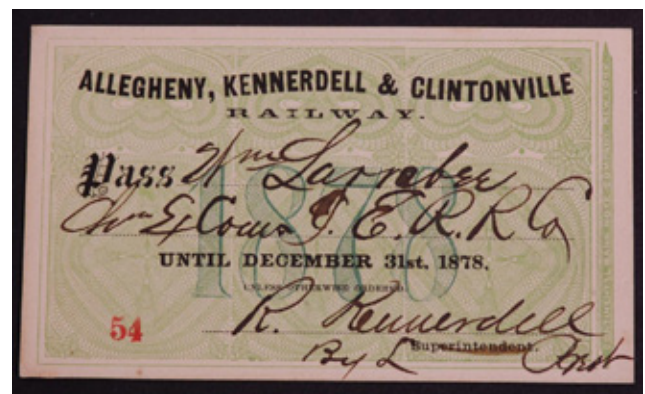
A \$225 bid was needed to purchase this 1877 annual pass from the Kent County, Smyrna, Delaware Bay Railroads.



A 12" diameter galvanized bucket painted "Pullman" and "For Ice Only" sold for a high bid of \$110.



A 1928 Great Northern Oriental Limited calendar featuring "Morning Bird" by Winold Reiss sold for a \$110 bid.



A \$575 bid took home this 1878 annual pass from the Allegheny Kennerdell & Clintonville Railway.

Continued on Page 18



A Pennsylvania Railroad cast iron keystone logo whistle sign with display stand sold for a \$300 high bid.



An Adlake Kero lantern from the Duluth Winnipeg & Pacific Railroad with an unmarked red globe sold for \$180.



A \$200 bid was needed to purchase this 48x30" metal New York Central System oval logo equipment sign.



A \$140 bid took home this Buffalo Rochester & Pittsburgh Railway bellbottom lantern with a strongly cast globe.



A scarce 1878 Oil City & Ridgway Railroad annual pass went to a new owner for a high bid of \$250.

Important Membership Renewal News

Issue #182 of the printed *Key Lock & Lantern* magazine (shown at right), the final edition of the current membership cycle, will be sent out soon. KL&L members always receive four issues of the magazine before their dues must be renewed, and new members who join during the year are usually sent all recent past editions, in order to get “caught up” with existing members. However, during this membership cycle, the back issue supply ran out due to high demand.

As a result, membership renewals will be a little different this year. If you joined during the current membership cycle, and did not receive issues #179, #180, and #181 (as shown below), then you will **NOT** need to renew your membership and your dues will be applied to the next cycle. You will still receive issue #182 and you will have your membership extended to receive printed magazines #183 through #186.

If you joined during the current membership cycle and you received issues #179, #180 and #181 before the supply ran out, then you will receive a renewal notice in issue #182. Dues for the next membership cycle will need to be paid in order to receive issues #183 through #186.

If you are a long-time member or joined during the previous membership cycle, then you have previously received issues #179 through #181, and you will also receive a renewal notice in issue #182.

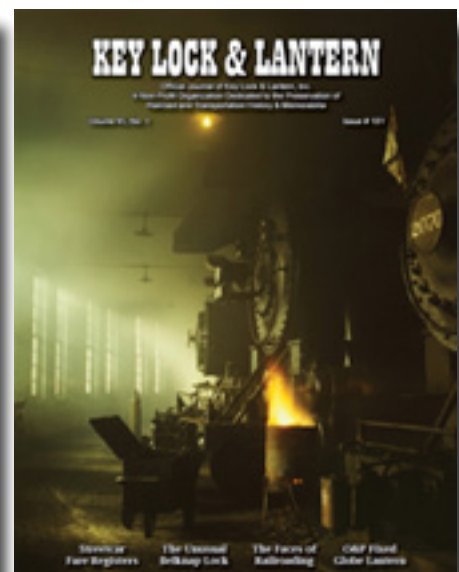
A few members sent in their dues at the end of the calendar year or paid them with past KL&L convention registrations when they were already up to date. If you did this, you will **NOT** need to renew your membership, and this payment will be applied to the next cycle (issues #183 through #186).

To verify that your dues are up to date, check the mailing label on the magazine envelope - the last issue that you are paid through is listed in the corner. If it shows #182, then you are due to renew; if it shows #186, then you are already paid through the coming membership cycle.



Don't forget that KL&L members have access to digital versions of past KL&L magazines by logging into the KL&L website. If you still need a user ID and password, email Dave Hamilton at transportsim@aol.com. Even though several recent issues are already out of print, they are available to members to view online.

Thanks to all of our members for your ongoing support of the organization, and we hope that you will renew your membership when the forms arrive in issue #182. We'll make an announcement on the website and Facebook when it is in the mail.





A Denver Laramie & Northern Railroad "Freight Brakeman" cap badge with no hallmark sold for a \$1050 bid.



A Silverton Railroad Otto Mears 1889 silver pass issued to Fred Walsen went to a new caretaker for a \$6250 bid.



A \$5750 high bid took home this Denver & Rio Grande Railway six-lever "Ice House Lock" with no hallmark.



Switch keys from the Chicago Burlington & Kansas City (\$725), the Chicago Burlington & Northern (\$250) and the Covington Flemingsburg & Ashland (\$420).



A Texas & Pacific Railway cast aluminum step box by Morton went to a new home for a \$420 high bid.



A \$80 bid was needed to purchase this AT&SF Bleeding Blue pattern 17" platter by Lamberton.



Wax sealers from the Adams Express Company, Villa Grove, Colorado (\$320) and the Burlington & Missouri River RR in Nebraska from Nebraska City (\$575).

Continued on Page 21



Adams & Westlake lantern from the Chicago St. Paul Minneapolis & Omaha with red cast CSTPM&ORY globe (\$1900), Colorado & Southern Railway A&W bell bottom with clear strongly cast C&S Ry globe (\$1350), Colorado Midland Railroad Handlan Buck "The Handlan" model wire bottom marked "Colo Mid RR" with a clear cast "CMRR" globe (\$2400)



Buttons from the Colorado Midland Railway by R. Woodman (\$85), Denver & Rio Grande "Railway Service" by American Railway Supply (\$140) and Rio Grande Southern "Railroad Service" by S.A. French (\$360).



A \$460 bid took home this St. Louis & Southwestern Railway "Cotton Belt Route" "Blue Streak" paperweight.



A 34x42" Rio Grande Southern Railroad "Silver San Juan Scenic Line" canvas wall hanging sold for a \$1200 bid.

Continued on Page 22



An American Locomotive Co. Brooks works builders plate for Kansas City Southern 2-8-8-0 No.759 sold for \$9750.



A Santa Fe Courier Nurse uniform by Ralph Helpernin with enameled badge, but missing the hat, sold for \$775.



A \$3600 bid was needed to purchase this Santa Fe Columbian demistasse set from Albert Pick & Co.



Keys from the Central Pacific Railroad by H. Ritchie & Co.(\$480), the Iowa Central Railway (\$460) and the Kansas City Fort Scott & Memphis Railroad (\$240).



A Denver & Rio Grande "Check Clerk" badge by Denver Novelty Works & Mfg. Co. sold for a high bid of \$725.



A \$4500 high bid purchased this Santa Fe Bleeding Blue pattern tureen hallmarked Lamberton on both pieces.



A Northern Pacific Yellowstone teapot by Langley with some condition issues still brought a \$300 bid.

Continued on Page 23



Florence & Cripple Creek wire bottom by Railroad Signal Lamp & Lantern with unmarked globe (\$4500), Union Pacific A&W Adams with red cast "Union Pacific" globe (\$2450), Union Pacific Denver & Gulf RR Adams with UP globe (\$4000)



A Santa Fe Railway "Station Matron" nickel plated badge with no maker's hallmark sold for a high bid of \$1300.



A \$3300 bid was needed to purchase this Santa Fe 9" Winslow dinner plate by Limoges, with some wear.



A Colorado & Southern Railway brass heart lock by Fraim with matching C&SRY key sold for a \$5250 high bid.

Continued on Page 24



A Railway Express Agency holster for a 38 caliber pistol went to a new home for a high bid of \$260.



A condiment caddy from the Santa Fe's Montezuma Hotel in Las Vegas, New Mexico sold for a high bid of \$400.



A \$500 high bid took home this AT&SF Bleeding Blue butter pat distributed by Albert Pick Company of Chicago.



An Iowa Central Railway pancake lock of a style made by Slaymaker sold for a high bid of \$1800.

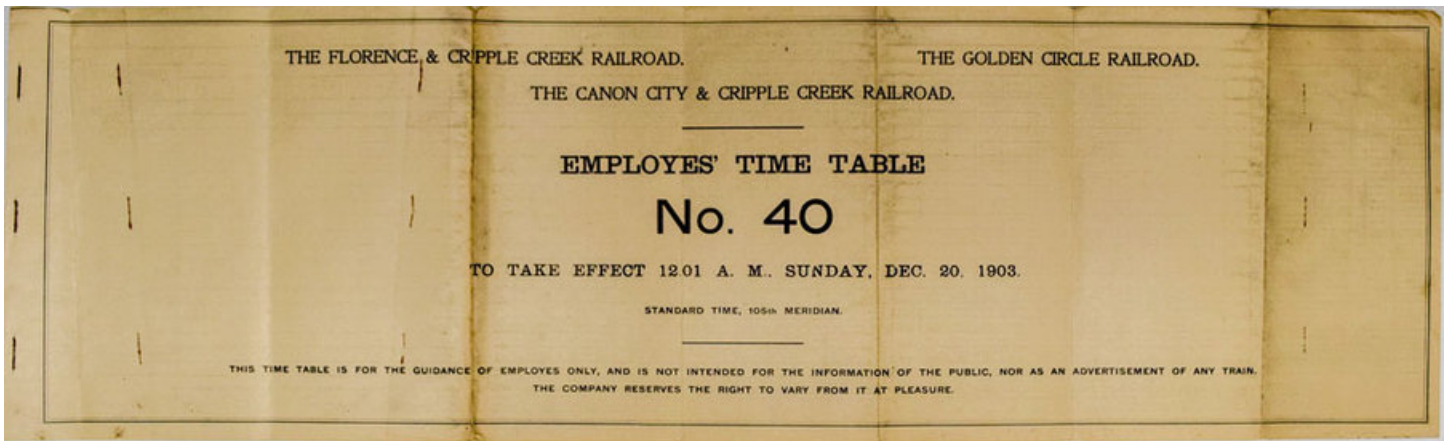


An interesting lot of a Santa Fe telegraph sounder, bug and relay and telegraphers schedule book sold for \$240.

Continued on Page 25



Left to right: Washington Alexandria & Mt. Vernon Ry heart lock by Union Lock & Hardware (\$2300), a 20" high brass "D&RGW" 5-chime whistle (\$6250), a Denver & Rio Grande Railroad red flashed 5 1/4" globe (\$3800).



Above, a 1903 employee timetable from the Florence & Cripple Creek, Golden Circle, and Canon City & Cripple Creek RR sold for \$400.



At left, a brass "Local" baggage tag made by W.W. Wilcox of Chicago for the Colorado Midland RR brought a high bid of \$460

At right, a high bid of \$440 took home this Chicago Rock Island & Pacific RR Sage Green pattern bread plate by Buffalo.



Railroad Event Calendar

Continued from Page 2

- ~~Apr 10-11~~ **Calgary, AB** - Calgary Super Train Railroad Show.
Info: www.supertrain.ca.
- Apr 10 DeLand, FL** - Florida Rail Fair by Golden Spike Enterprises.
Info: www.gserr.com.
- Apr 11 Monaca, PA** - Beaver County Model RR & Historical Society Train Show
Info: www.bcmrr.railfan.net.
- Apr 16-17 Brookline, NH** - Railroadiana Consignment Auction. Brookline Auction Gallery.
Info: www.tagtown.net.
- Apr 17 Columbus, OH** - Buckeye Railroadiana Show by Golden Spike Enterprises.
Info: www.gserr.com.
- Apr 24-25 New Braunfels, TX** - New Braunfels Train Show.
Info: www.nbrmm.org
- May 7-9 Carbondale, PA** - Key, Lock & Lantern Convention. Railroad History Expo
Info: www.klnl.org.
- May 8 St. Cloud, MN** - Granite City Railroad Show St. Cloud, MN.
Info: www.granitecitytrainshow.com.
- May 8 San Luis Obispo, CA** - San Luis Obispo Railroad Museum Train Day.
Info: www.slorm.com.
- May 13-15 Columbus, OH** - Pennsylvania Railroad Tech & Historical Society Meeting.
Info: www.prrths.com.
- May 14-16 Cleveland, OH** - New York Central Historical Society Convention.
Info: <http://nycshs.org>.
- May 26-31 Bryan, TX** - Railway & Locomotive Historical Society Convention.
Info: www.rlhs.org.
- Jun 3-5 Independence, OH** - Norfolk & Western Historical Society Convention
Info: www.nwhs.org.
- Jun 13 St. Charles, IL** - Kane County Railroadiana Show. Kane County Fairgrounds.
Info: www.rrshows.com.
- Jun 15-20 Albuquerque, NM** - Santa Fe Railway Historical Society Annual Convention.
Info: www.atsfr.com.
- Jun 26-27 Dayton, OH** - Miami Valley Rail Festival at Carrillon Park.
Info: www.railfestival.com.

Send listings to: transportsim@aol.com

There is no charge for calendar listings. Train shows must include dealers of authentic railroad memorabilia or related material, and auctions must include at least 20 lots of railroadiana. Other events must be directly related to railroad history (special exhibitions, lecture programs, conventions, limited excursions, etc.). Regular monthly group meetings, model train meets & scheduled tourist train trips are not eligible, unless related to a special event. Events are listed space permitting, at the editor's discretion. Listings are subject to error or change. Always check show web sites before traveling.

Visit www.klnl.org for More Listings



KEY LOCK & LANTERN

Can Help Promote Your
Auction, Show or Event

With Advertising in KL&L Publications
2000+ Facebook Followers
1200+ Monthly Web Visitors
750+ Newsletter Readers

Contact KL&L Editor Dave Hamilton at
transportsim@aol.com

The New York-Pennsylvania COLLECTOR

Living with Antiques, Art & Americana

A Monthly Publication Featuring News &
Articles About Antique Collecting & History



Auction & Show Listings
Club Meetings & Events
Identification & Fakes
Antique Restoration Tips
Museums & Historic Sites
Dealer & Flea Market Ads

Subscription & Advertising Information:
1-800-518-0875 www.nypa-collector.com

KEY LOCK & LANTERN

Index on Computer CD

Index of all KL&L Magazines from Issue #1 through Issue #151 in searchable Acrobat (PDF) format. \$7.95 postpaid. Contact:

Marie Brainard
35 Nordhoff Place
Englewood, NJ 07631-4810

Membership Brochures

Are Available in PDF Format for Printing & Distribution at Railroadiana Shows, Historical Museums, Railroad Club Meetings & Other Events

Download the Current Version at
www.klnl.org



All submissions for the KL&L magazine, news items for the digital KL&L News & general inquiries should be sent to:

KL&L President & Editor
David Hamilton
244 Elm Ave
Delmar, NY 12054
E-mail: transportsim@aol.com

Send membership applications, dues payments, and address changes to:

KL&L Chairman John Brainard &
VP-Membership Marie Brainard
35 Nordhoff Place
Englewood, NJ 07631
E-mail: j944wb@aol.com

Join or Renew Your
KEY LOCK & LANTERN
Membership Online at
www.klnl.org

KL&L Membership Form (2021 Membership Year)

Please make check or money order payable to Key, Lock & Lantern, Inc. and forward to:
Marie Brainard, KL&L Membership, 35 Nordhoff Place, Englewood, NJ 07631-4810

Name _____

Representing (business or museum, if applicable) _____

Address _____

City _____ State/Prov _____ Zip/Mail Code _____

Phone _____ E-mail _____

Basic membership at \$30 per year (1st Class mailing in USA) or \$40 per year (non-USA).....\$ _____

Contributing membership at \$35 per year, to help support KL&L(1st Class mailing in USA)..... \$ _____

Additional Donation.....\$ _____

Enclosed is my check / money order payable to Key Lock & Lantern, Inc. for.....\$ _____

Membership in KL&L includes 4 issues of the printed magazine, special member rates for KL&L Convention registration, and access to "members only" content on the KL&L website. New members joining before September will receive all previously published magazines for the year, and will be due for renewal in the following January. New members joining in September or later will have their dues applied to the next membership period, beginning with the Jan/Feb/Mar issue, unless otherwise requested.