



# KEY LOCK & LANTERN NEWS



June 2021

Issue No.62

*The Bi-Monthly Digital Supplement to Key Lock & Lantern Magazine*



**KL&L Convention  
Schedule Updates**

**Rail & Road  
Auction Report**

**Soulis Railroad  
Auction Highlights**



# KEY LOCK & LANTERN NEWS



The Bi-Monthly Digital Supplement to Key Lock & Lantern Magazine  
WWW.KLNL.ORG

**June 2021**

**Issue #62**

From the President's Desk .....	3
Railroad Event Calendar.....	3
Rail & Road Auction Report.....	4
Soulis Railroadiana Auction.....	6
Steamtown's Big Boy Returns.....	10
Programs on D&H and NYO&W.....	12
KL&L Transportation History Expo.....	13
Carbondale & Honesdale Museums.....	14
Scranton Area Excursions.....	15
KL&L Announcements .....	19

**KL&L News Editor.....David Hamilton**  
**Production Facilities.....NY-PA Collector Magazine**

**Send News Items for Publication to the Editor at:**  
**Transportsim@aol.com**

The Key, Lock & Lantern News is published bi-monthly as a digital supplement to the quarterly Key, Lock & Lantern magazine. Recipients may repost or forward complete and unmodified copies of this newsletter to other hobbyists and websites, but its content may not otherwise be copied or distributed without the permission of the KL&L Board of Trustees. Copyrights are held by the respective authors and photographers. Excerpts of news items may be published with the credit line "Key, Lock & Lantern News"

Annual membership dues for Key, Lock & Lantern are \$30 for residents of the USA, and \$40 for outside of the USA (by money order or electronic payment in US funds). Members receive four issues of the quarterly KL&L magazine, delivered via first class mail. Memberships for additional family members are \$5 each (only one magazine is sent per family). Applications for membership & address changes should be forwarded to the VP-Membership at the e-mail address listed at right. Online membership forms and dues payment via Paypal are available at [www.klnl.org](http://www.klnl.org).

Contributions of articles, photos, and news may be forwarded to the editor at the e-mail address listed at right. Hard copy articles should be written on 8 1/2 x 11" paper, and typed or neatly printed. Photos should be sent with a caption card attached which includes the contributor's name, phone number, and description. Photocopies of advertising and supply catalogs are acceptable. The submission of material in digital format is preferred, with text files in DOC, TXT, or PDF format, and images in JPG, TIF, BMP or GIF format. Digital files may be sent by e-mail or on a computer CD or flash drive. Please contact the editor regarding optimum file sizes and formats.

By submitting material to Key, Lock & Lantern, the contributor grants permission for use in any edition of the KL&L magazine, digital newsletter, websites, and other publications. All material will be retained by KL&L for future use, unless the contributor specifically requests that it be returned, and includes a suitable, self-addressed, stamped envelope. Current deadlines are listed in the Key, Lock & Lantern Advertising Guide, which is available on the KL&L website at [www.klnl.org](http://www.klnl.org), or by contacting the editor.

## Key, Lock & Lantern

A non-profit membership corporation dedicated to the preservation of transportation history and railroad memorabilia

*The mission of Key, Lock & Lantern is to gather and publish information on the history of the transportation industry, and to support the preservation of railroad artifacts. KL&L members have an interest in all aspects of railroad & transportation history, from research and preservation projects to the conservation and restoration of all types of historical memorabilia. Originally formed in 1966, Key, Lock & Lantern, Inc. was officially incorporated in 1988 as a non-profit, educational, membership corporation in the State of New Jersey, under the provisions of Section 501(c)(3) of the United States Internal Revenue Code. Membership is open to anyone with an interest in transportation history and in achieving the goals of the organization.*

## Officers & Trustees

### Chairman of the Board

John Brainard  
j944wb@aol.com

### President & Editor

David Hamilton  
transportsim@aol.com

### VP- Membership / Treasurer

Marie Brainard  
j944wb@aol.com

### Secretary

(Rotates Among Trustees)

### Chaplain / Sgt at Arms

Chip Greiner

### Counsel

Jeremy Tuke

### Historian

Peter Gores

### Trustees at Large

Lyman Gray, Sam Lombardi, Joel Shaw, Sam Ferrara, Phil Simms, Leonard Gordy, Bob Lipman, Randy Bushart, William Sternitzke, Bill Roberts, Bob Myers & Joey Senese

**[www.klnl.org](http://www.klnl.org)**



For Current News  
"Like" KL&L on

**facebook**

## Auctions & Convention On Track

At the end of June, most COVID restrictions involving meetings and gatherings were lifted in Pennsylvania for those who have been vaccinated. This final hurdle for holding a “normal” KL&L Convention has now been cleared and we are looking forward to an exciting event. Despite the fact that the convention is taking place during the summer this year, we already have a large number of registrants.

In this issue of the *KL&L News*, we have highlighted a few of the activities at the convention, as well as some other local attractions that will be of interest to attendees. If you are able to stay for a couple of extra days before or after the convention, there are literally dozens of historic sites and museums in the region that are related to transportation and industrial history.

If you haven't registered yet, please take a moment to do so. Also, be sure to make your hotel reservations soon, before all rooms are booked. There are several “behind the scenes” differences with this year's convention: the hotel is slightly smaller than our previous location, we will be getting tables from a rental company, and the train ride is also open to the public. As a result, it may not be possible to accommodate last minute requests for these things, as has been the case in the past. Avoid disappointment - register now!

Also in this month's issue are reports from the recent Rail & Road and Dirk Soulis railroadiana auctions. There have been many high end collections sold at auction recently (with some still in progress), so it would seem like the supply and demand curve would pull down prices. However, there have been some truly jaw-dropping results at the last few auctions, with multiple bidders getting in on the action.

I collect for enjoyment, not as an investment, so I would be happy with a moderately priced market for railroadiana (just enough to keep it worthwhile for sellers), but it is nevertheless encouraging to see such a high level of interest. Many other areas of antique collecting have seen a decline in recent years, so it is a good sign when someone is willing to pass on getting a new car in order to buy a rare lantern.

When large collections such as these are dispersed, it goes without saying that a few reproductions will show up in the many lots. While the auctioneers that specialize in railroadiana are pretty good at weeding them out, sometimes a piece or two slips through, and general antique or estate auctioneers often will not recognize them. Before laying out big money, it is a good idea to do your homework.

Membership in KL&L is a great way to connect with other collectors and expand your knowledge of railroad antiques. The KL&L Convention is like a two-day course in advanced collecting, with discussions ranging from identifying repros to new restoration methods, and plenty of scarce memorabilia on display. If you enjoy this newsletter and are not currently a member, consider getting on board, or make plans to attend the convention and see what KL&L is all about.

Good luck at the upcoming auctions, and I hope to see some of you at the convention!

*Dave Hamilton*

KL&L President & Editor

## Railroad Event Calendar



**Upcoming historical society conventions, special events, railroadiana shows & auctions. Listings subject to change. Check show web sites before traveling and visit [www.klnl.org](http://www.klnl.org) for updates. See submission guidelines at the end of the calendar.**

**Events that have been cancelled or rescheduled due to COVID-19 have their date crossed out. Other changes are possible - check the organizations websites.**

**Look for Advertisements in this Issue & on the Key Lock & Lantern Website for [Events Shown in Blue](#)**

- Jul 10** **Online Auction** - Rail & Road Auctions online railroadiana consignment auction.  
Info: [www.bidrar.com](http://www.bidrar.com).
- Jul 10** **DeLand, FL** - Florida Rail Fair. Golden Spike Enterprises  
Info: [www.gserr.com](http://www.gserr.com).
- Jul 14-17** **Online Only** - Union Pacific Historical Society Convention.  
Info: <http://uphs.org>.
- Jul 17-18** **Ilwaco, WA** - Clamshell Railroad Days. Columbia Pacific Heritage Museum.  
<http://columbiapacificheritagemuseum.org>
- Jul 17-18** **Williams Grove, PA** - Williams Grove Steam Engine Association Flea Market.  
Info: [www.wghsea.org](http://www.wghsea.org)
- Jul 24-25** **Deshler, NE** - Spring Creek Train Show. Spring Creek Model Trains.  
Info: [www.springcreekmodeltrains.com](http://www.springcreekmodeltrains.com)
- Jul 24** **St. Paul, MN** - Twin City Model Railroad Museum Hobby Show.  
Info: [www.tcmrm.org](http://www.tcmrm.org)
- Jul 30-31** **Lone Jack, MO** - Online railroadiana auction. Dirk Soulis Auctions.  
Info: [www.soulisauctions.com](http://www.soulisauctions.com).

*Continued on Page 22*

Front Cover: The Union Pacific Big Boy on its former display track at Steamtown, prior to its most recent restoration. Dave Hamilton photo.

# Rail & Road Auctions Continues Sale of Fine Art Collection and Railroad Memorabilia

Following a successful fall auction that included a large variety of railroading consignments, Rail & Road Auctions held another online sale in February. While there was once again a nice selection of memorabilia, it was the railroad fine art in the auction that stole the show. The next auction will feature artifacts from the Brian Maiher collection, so it will certainly be worth checking out. *All photos, prices, and descriptions courtesy of Rail & Road Auctions. Prices do not include buyer's premium or shipping.*



A \$120 bid was needed to purchase this Baltimore & Ohio Capitol Dome pattern teapot by Shenango.



The original New York Central calendar oil painting "In the Hudson River Valley - The Twentieth Century Limited" by Walter L. Greene was in the collection of Lionel Trains owner Richard P. Kughn for many years. This famous work sold for a high bid of \$9,100.



An original acrylic on canvas painting "Monon in the Winter" by Robert Skiba sold for a high bid of \$875.



A \$425 bid took home this 1889 Chicago Burlington & Quincy Railroad National League Baseball calendar.

## KEY LOCK & LANTERN

Can Help Promote Your  
**Auction, Show or Event**  
 Contact KL&L at [transportsim@aol.com](mailto:transportsim@aol.com)

Continued on Page 18

# Selections from The Brian Mahier Collection Online Auction Saturday July 10, 2021



Rail & Road Auctions is proud to present a quality selection of Railroadiana from the collection of Brian Mahier. This sale will feature; signage, hand lanterns, marker lanterns, locks, keys, china, paper, drumheads, locomotive hardware, and much more.

We invite you to view the entire catalog on our website. Rail & Road is offering online, absentee, and telephone bidding for this sale scheduled on July 10, 2021.



[www.BIDRAR.com](http://www.BIDRAR.com)  
765-412-7926

(Bid Live Online, Phone, or Absentee)

# Rare Lanterns Featured in Dirk Soulis Auctions Railroadiana Sale

Dirk Soulis kicked off the 2021 railroad auction season with one sale after another, each including plenty of scarce artifacts. The March auction featured rare lanterns and other memorabilia from the collection of Steve Cregut. While scarce lanterns from western railroads have been commanding high prices lately, this sale was the stuff that second mortgages are made of. Additional memorabilia from the Ed McHugh collection is lined up for the next auction at the end of July, with a list coming soon. *All photos, prices, and descriptions courtesy of Soulis Auctions. Prices do not include any applicable buyer's premium or shipping.*



*An Adams & Westlake brass top bellbottom lantern marked AT&SF RR for the Atchison Topeka & Santa Fe with matching red cast globe sold for a high bid of \$18,000.*



*A \$7,000 high bid was needed to purchase this Union Pacific Adams & Westlake brass top wire bottom lantern with red cast "Union Pacific" extended base globe.*

*Continued on Page 20*

## KEY LOCK & LANTERN

Can Help Promote Your  
**Auction, Show or Event**

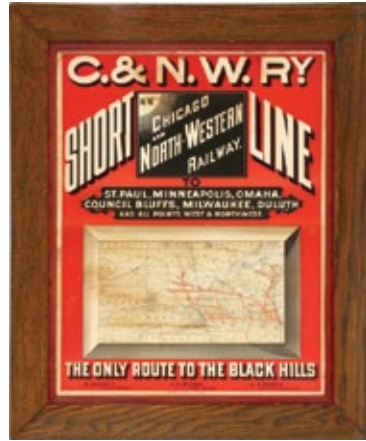
Contact KL&L at [transportsim@aol.com](mailto:transportsim@aol.com)

# Railroadiana Auction

Featuring Selections from the Ed McHugh Collection



Steamship Travel Advertising and Ephemera



Rare Broadside Large and Small



Union Pacific Silver with Overland Route Logo



Railroad Equipment Patent Models

A Large Collection of Railroad China, Advertising, Ephemera and Much More.

This has been expanded to a TWO DAY auction

*Friday, July 30  
at 4pm*

Uncataloged Rail Travel Artifacts from the Ed McHugh Estate.

*Saturday, July 31  
at 10am*

Cataloged American and Canadian Rail and Steamship Travel Artifacts, China, Advertising and Ephemera.



A Collection of Timetables and Other Ephemera



A Collection of Dining Car China



Dining Car Silver Plated Wares



Posters in Frames with Branded Advertising



Depot Prints from All Periods

529 W. Lone Jack Lees Summit Road, Lone Jack, MO 64070  
816.697.3830 | [www.SoulisAuctions.com](http://www.SoulisAuctions.com) | [dirk@soulisauctions.com](mailto:dirk@soulisauctions.com)

# Railroad Memories



Offering Quality Railroadiana Since 1987

I have had the pleasure of selling many amazing pieces over the years and have proudly realized record prices! Below is just a sample of some of the stars sold in my most recent auctions.

## Next Sale: To Be Announced



Great Northern Green  
Cast Globe \$4900



Silver Otto Mears Pass  
Price Realized \$7250



CRI&P BT Lantern  
Price Realized \$4300



D&RG Red Cast Globe-  
Price Realized \$5750



H&BVRY Key  
Price Realized  
\$1600



NP Milk Bottle  
Price Realized \$3600



TPA Silver Pass  
Price Realized \$3200



Santa Fe News Service-  
Price Realized \$2800



Heisler Builders Plate-  
Price Realized \$4200



Colorado & Southern-  
Price Realized \$3100



GNRY Dwarf Cup  
Price Realized \$1300



D&RG Demi cup  
Price Realized \$3300



UP Egg Cup  
Price Realized \$3600



Union Pacific Sign  
Price Realized \$1400



SA&AP Cast Lock  
Price Realized \$1250

P.O. Box 415  
Georgetown, Colorado 80444  
Phone: 303-569-5185 Fax: 303-569-5186

[www.railroadmemories.com](http://www.railroadmemories.com) email: [railroadmemories@gmail.com](mailto:railroadmemories@gmail.com)



# Railroadiana Auctions - Spring & Fall - Brookline, NH

Railroadiana Consignment Auctions Held Each Spring & Fall

Brookline Auction Gallery LLC - 32 Proctor Hill Rd, Brookline, NH 03033

Auction information including photos: [www.tagtown.net](http://www.tagtown.net)

Scott Czaja - Sales Manager (978) 779-2904

## Highlights of Recent Sales



Concord RR Thompson Lantern: \$1700,  
Triple Marked Boston & Albany New  
England Glass Lantern: \$1750

Boston & Maine Railroad New  
England Travel Poster with  
Minuteman Logo: \$410

Grand Central Station Lantern with Green  
Cast Globe: \$3100, New York New Haven &  
Hartford - Hartford Division Thompson: \$2500



Cast Iron Railroad Crossing Stop,  
Look & Listen Sign: \$400

Nickel Plate Road Berkshire #774  
Number Board: \$2200

St. Albans Street Railway Dock  
Master Hat Badge: \$625

## Next Sale: October 1-2, 2021



Lehigh Valley RR brass top marker lamp: \$700  
New England RR Fancy Cast Lock: \$1100

Boston & Maine RR Silver  
Casserole Dish: \$800

Grand Trunk Railway Brass Lock: \$1800  
Pennsylvania RR cast fixed globe: \$2900



Pennsylvania Railroad Gate Sign: \$400

New Haven RR Winsted, CT  
Wax Sealer: \$1100

Central Vermont Railway Ticket Office &  
Pullman Reservations Sign: \$675

Now on [LiveAuctioneers.com](http://LiveAuctioneers.com) - We also accept absentee bids via: e-mail & mail  
Quality consignments are welcome for future sales - call Scott or email: [sczaja@hotmail.com](mailto:sczaja@hotmail.com)

# Steamtown's Union Pacific Big Boy: Back on Display!



*The Union Pacific Big Boy poses on the Steamtown turntable after receiving a new paint job. NPS photos.*

Steamtown National Historic Site (NHS) is pleased to announce that its Union Pacific Railroad "Big Boy" No. 4012 has returned to static exhibition in the park following an extended cosmetic restoration. The locomotive was removed from display in 2019 in order to replace rusted parts, remediate hazardous materials from its original construction, and receive a new paint job.

No. 4012 is among a unique class of 25 articulated steam locomotives with a 4-8-8-4 wheel set built solely for the Union Pacific Railroad by the American Locomotive Works (ALCO). Most were constructed in 1941 (including No. 4012) on the eve of United States' entry into World War

*Continued on Page 11*



*The Big Boy was in need of a cosmetic restoration after many years of display at the park. Dave Hamilton photo.*

# Steamtown's Big Boy

Continued from Page 10

II. As such, their ability to haul heavy loads unassisted subsequently played a critical role in America's home front war effort.

An engineering marvel that is perhaps the high point to steam locomotion technology, the "Big Boys" nonetheless became obsolete as more efficient, reliable, and cost-effective diesel-electric locomotive technology was refined during the 1950s. The last Union Pacific "Big Boy" revenue run occurred in 1959.

Union Pacific Railroad recently restored "Big Boy" No. 4014 to operational service to honor the railroad's long history and to commemorate its role in building the first transcontinental railroad, which was completed in 1869. Only eight "Big Boys" survived the scrapper's torch, with Steamtown NHS's No. 4012 the only one to be found on exhibit in the U.S.'s eastern time zone.

Located in downtown Scranton, Pa., Steamtown NHS is open daily from 10:00 a.m. to 4:00 p.m. From Interstate-81 follow exit 185 (Central Scranton Expressway); then follow the brown and white signs to the park entrance at Lackawanna Avenue and Cliff Street (GPS: N 41.41, W 75.67). General park information is available by phoning (570) 340-5206 during regular business hours, or by visiting the park website anytime at <http://www.nps.gov/stea>. (News release courtesy of Steamtown NHS)



The Big Boy emerges from the roundhouse after a two year cosmetic restoration project. Steamtown NHS photo.



The exhibits at Steamtown are gradually reopening after a year of closure due to COVID-19. Dave Hamilton photos.



The new display location for the Big Boy on the curved track adjacent to the entrance road. NPS photo.



# Programs on the NYO&W Ry in the Scranton Area and D&H Gravity Railroad to be Presented

Two programs on the history of railroads in the Scranton area will be presented at the Hotel Anthracite in downtown Carbondale, PA on August 14, 2021. The lectures are part of a full weekend of events at the Key Lock & Lantern annual convention, and admission to the programs is included in the basic registration fee for the convention.

Walter Kierzkowski of the Ontario & Western Historical Society presented an excellent program about the NYO&W at the 2018 KL&L Convention, and he will be returning to this year's event. His previous presentation included both historical photos and current views of locations on the O&W around the Scranton area, and he will continue by giving a virtual tour of other parts of the region.

The Delaware & Hudson Canal was another major player in the business of hauling coal from the region, with its gravity railroad forming an important link in the transportation chain. This interesting operation will be the subject of a lecture by Dr. S. Robert Powell of the Carbondale Historical Society. Dr. Powell has conducted extensive research on the history of the canal and gravity railroad, and has authored a comprehensive series of books on the subject.

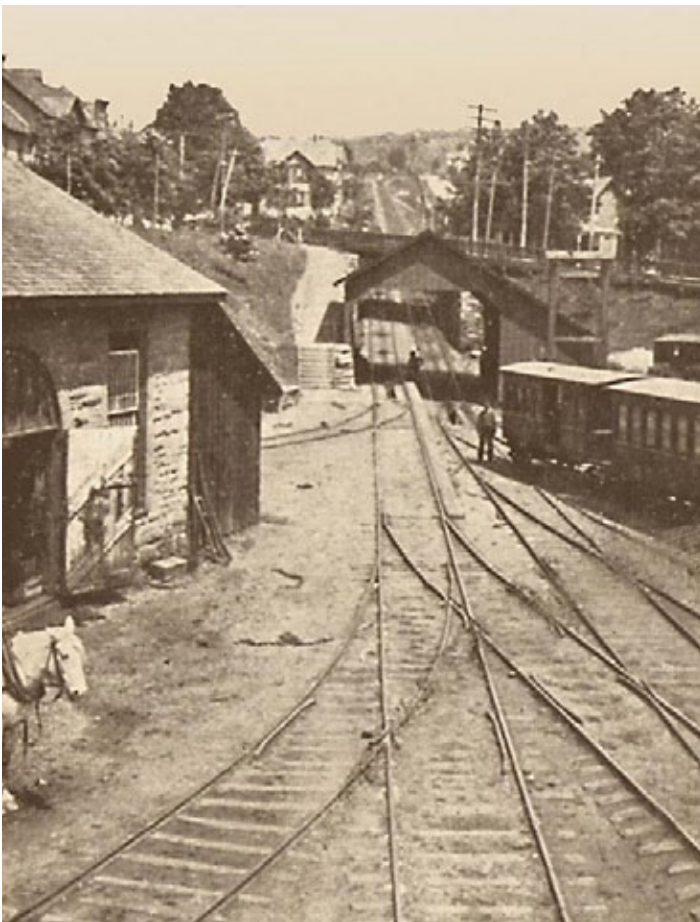


*NYO&W #141. Photo from the Steamtown NHS collection.*

Following these programs, there will be an "open projector night" for KL&L members to informally show photos and presentations of railroad and transportation subjects. It is requested that anyone wishing to show material sign up in advance, so that the proper multimedia equipment may be set up. Contact Dave Hamilton at [transportsim@aol.com](mailto:transportsim@aol.com).

The programs will begin at approximately 7:00PM in the banquet room at the Hotel Anthracite, following the KL&L Convention dinner (registration for the dinner is not required for attendance at the presentations). The basic registration fee for KL&L members is \$5 in advance, or \$10 on the day of the convention, and \$10 for non-members. This fee also includes admission to the Transportation History Exposition, to be held at the Hotel Anthracite from 9:00am to 3:00pm on Saturday, August 14th. Registration will be available at the door during the expo; for those wishing to attend the dinner, reservations must be made in advance.

For more information and a complete schedule of events, visit the KL&L website at [www.knl.org](http://www.knl.org).



*The Delaware & Hudson Canal Company's gravity railroad in Carbondale, PA. National Park Service collection.*



*2018 KL&L Convention participants enjoy a virtual tour of the NYO&W around Scranton given by Walt Kierzkowski.*

# Transportation History Exposition to Feature Displays & Original Memorabilia for Sale

The “main event” of the Key Lock & Lantern convention - the Transportation History Exposition - will take place at the Hotel Anthracite in Carbondale, PA on Saturday, August 14th, from 9:00am to 3:00pm. Museum-quality exhibits about railroad, transportation, and industrial history will be displayed by KL&L members, and a variety of memorabilia will be offered for sale or trade. A smaller event than typical “train shows” (there are usually about 60 tables, all dedicated to history and authentic memorabilia), the expo is the perfect venue for serious collectors and historians to meet, share information, and trade rare artifacts.

As of the publication of this newsletter at the end of June, there are still a few tables available, but reservations should be made as soon as possible. This year, tables will be supplied by an outside rental company, so last minute requests cannot be filled. Don't miss out on the opportunity to compete for the “Best in Show” award and sell some of those extra things in your collection - be sure to register early!



Although the expo has its roots in the annual KL&L meets that took place in Albany, NY for decades, it is no longer just a railroad hardware show. Collectors of all types of lanterns will enjoy the displays by “The Antique Lantern,” one of the country’s foremost dealers of early lighting. Paper and ephemera collectors will find plenty of tables full of timetables, maps, and tickets (timetable collector Gary Betz will have multiple tables at this year’s show). There will be something for everyone at the expo.

Registration will be available at the door for those who only wish to attend the show and evening programs, for a fee of \$10 per person. Advance registration is required for all other convention events. Visit the Key Lock & Lantern website at [www.klnl.org](http://www.klnl.org) for a complete schedule of events and online registration.



# Carbondale Historical Society Museum Preserves Fascinating History of Region

It is not merely by chance that the 2021 Key Lock & Lantern Convention is being held in Carbondale, PA - the region is filled with numerous reminders of its fascinating transportation and industrial history. Located on the third floor of City Hall, the Carbondale Historical Society and Museum houses a collection of artifacts related to the industries that led to the growth of the city. For visitors who are exploring historic sites in the area, it is worth making a stop at the museum.

Memorabilia from the region's railroads and coal mines is on display, along with artifacts from businesses in the local community where many of the workers lived. In addition to the exhibits, the Historical Society also maintains a research room in the museum, for those studying the history of the region, its industries, and local genealogy.

City Hall is located at One North Main Street in downtown Carbondale. The museum's hours are generally from noon to 5:00PM, Monday through Friday, but it is highly recommended that visitors call ahead to confirm that it will be open. Call 570-282-0385 or email the historical society at [carbondalehistorical@gmail.com](mailto:carbondalehistorical@gmail.com) for more information, to confirm hours, or make an appointment. The society also maintains a website at <https://carbondalepahistorical.org>.



*A variety of railroad memorabilia is on display at the Carbondale Historical Society Museum. CHSM photo.*



*The Carbondale Historical Society Museum exhibits explore the area's transportation history. CHSM photo.*



*Other displays include artifacts from local businesses and the surrounding community. CHSM photo.*

# Wayne County Historical Museum Reopens After Year-Long Closure Due to Pandemic

After over a year of closure due to the COVID pandemic, the Wayne County Historical Society museum in Honesdale, PA reopened at the end of May. Housed in the 1860 building that once served as headquarters of the Delaware & Hudson Canal Company, the museum's exhibits explore the history of the D&H Canal, its gravity railroad, and local industries.

The centerpiece of the D&H exhibit is the railroad's replica of the Stourbridge Lion locomotive, which made test runs here in 1829. On display with the locomotive is the gravity railroad coach "Eclipse," which once carried passengers over the mountains to Carbondale.

Wayne County, PA was once a glass making center, and an entire exhibit at the museum is devoted to the many glass manufacturers, glass cutters, and dealers in the region. The extensive displays include tools, photos of the factories, and examples of locally produced glassware. Lantern collectors will be particularly interested in the Dorflinger Glass display, with its ornately cut lantern globe.

The Wayne County Historical Museum is located at 810 Main St. in downtown Honesdale, PA, within walking distance of the Stourbridge Line train excursion parking lot. Hours are 11am to 4pm, Wednesday through Saturday, and there is a modest admission fee. For more information, visit the society website at <https://www.waynehistorypa.com>, or call 570-253-3240.



*The Delaware & Hudson Railroad's replica of the 1829 Stourbridge Lion locomotive is on display in the Wayne County Historical museum's gallery. Dave Hamilton photo*



*The Wayne County Historical Society Museum is housed in the original Delaware & Hudson Canal Company office building in downtown Honesdale. Dave Hamilton photo*



*Tools, photos, and glassware from the many manufacturers in the region are on display, including this ornately cut lantern globe by Dorflinger. Dave Hamilton photo*

# Trolley Rides on Laurel Line Route Resume at Electric City Trolley Museum

KL&L members who attended the Key Lock & Lantern Convention in 2019 enjoyed a chartered trolley trip over the former Lackawanna & Wyoming Valley “Laurel Line.” For those who missed the trip (or would like to take another ride), the Electric City Trolley Museum in Scranton, PA has resumed its regular excursion schedule for the 2021 season. The ride takes approximately 1 1/2 hours, with the restored trolley cars making the run over portions of the original 3rd rail line and Erie Railroad trackage, including the 4747-foot long Crown Avenue Tunnel. While the motorman changes ends, passengers may view the museum’s car barn, where restoration projects are taking place.

The museum itself is filled with displays of interurban and street railroad memorabilia and rolling stock. Both serious traction fans and those with a casual interest in this aspect of transportation history will find the exhibits to be interesting and informative. All types of artifacts are on display, from electrical equipment to photos, lanterns and ephemera, from local lines and other transit systems. A visit to the museum will certainly help with identifying those unusual trolley items at future shows and auctions.

The Electric City Trolley Museum is located at 300 Cliff Street in Scranton, PA, across the parking lot from the main entrance to Steamtown. The museum is open daily from 9am to 4pm, with excursions operating from Thursday through Sunday. For more information, and to confirm the trolley trip schedule, call the museum at 570-963-6590 and visit their website at [www.ectma.org](http://www.ectma.org).



*The Key Lock & Lantern chartered trolley excursion exits the 4747-foot long Crown Avenue Tunnel on the former Laurel Line Route in 2019. Dave Hamilton photo*



*The Electric City Trolley Museum is filled with displays of all types of trolley memorabilia. Dave Hamilton photo*



*2019 Key Lock & Lantern Convention participants enjoy the exhibits of historic street & interurban railroad rolling stock at the Electric City Trolley Museum. Dave Hamilton photo*

**KEY LOCK & LANTERN**

**Ads Reach Serious Collectors**

**Contact KL&L at [transportsim@aol.com](mailto:transportsim@aol.com)**



# Stourbridge Line Excursion Follows the Route of the Erie RR Wyoming Division

This year's KL&L Convention features an excursion over a portion of the Erie Railroad's Wyoming Division, now run by the Stourbridge Line as a scenic railroad. Once operated as a competing route to the D&H Canal, the line ran from an Erie mainline connection at Lackawaxen to Wilkes-Barre. Traffic on the line primarily consisted of coal, and several sections were abandoned after mining activity in the region declined. The part of the route from Lackawaxen to Hawley, along with the branch to Honesdale, were preserved to serve local industries, and have been operated by several different shortlines over the years.

Key Lock & Lantern Convention participants will have the opportunity to ride over the entire line between Honesdale and Lackawaxen on Friday, August 13th. The Stourbridge Line train will board at 12:45pm in Honesdale for a scenic ride through the Pennsylvania countryside. Open air coaches offer an excellent opportunity to enjoy the sights, and the railroad's historic diesels provide the motive power.



*The 2021 Key Lock & Lantern Convention will feature a scenic train ride along the Lackawaxen River, over the former route of the Erie Railroad's Wyoming Division. All photos courtesy of the Stourbridge Line Railroad.*



The afternoon departure time will allow for time to visit the Wayne County Historical Museum and also grab something to eat at one of the nearby restaurants. Departure will be at 1:00PM sharp, with arrival back at Honesdale at 4:30PM. There are restrooms on the train, and a table car is available for those who wish to bring snacks.

Tickets must be reserved with KL&L in advance, as part of the registration options for the 2021 Key Lock & Lantern Convention. Please note that this is also a public excursion, so the train cannot be held for late arrivals and tickets are more likely to sell out - make your reservations early! For more information, and online registration, visit the KL&L website at [www.klnl.org](http://www.klnl.org).

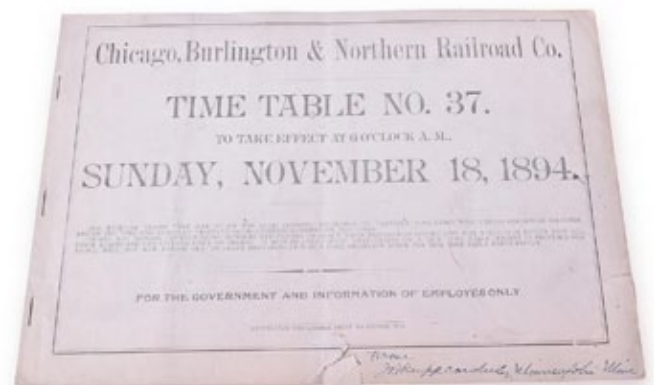




"Faded Glory" oil on canvas by Robert L. Hunt featuring Atlantic Coast Line F7 diesels sold for an \$1800 bid.



A Chicago, Burlington & Quincy Railroad advertising mat promoting travel to Omaha brought a high bid of \$80.



A \$200 bid was needed to buy this 1894 Chicago, Burlington & Northern Railroad Employee Timetable.



A rare 1885 Burlington Route owl calendar from the CB&Q archives sold for \$275 despite some condition issues.



A Chicago & Northwestern RR Galena Division Car key by Bohannon sold for a \$375 high bid, while a Texas & New Orleans Railroad switch key brought a top bid of \$160.

Continued on Page 19



A \$300 bid took home a framed 27x20" watercolor "Lackawanna E8's Under the Wires" by artist E. Tone



"Night Shift" oil on canvas by Robert L. Hunt depicting Santa Fe Alco PA warbonnet units brought a high bid of \$2000.

## Key Lock & Lantern News & Announcements

### Membership Renewals

Dues renewals for the 2021-2022 membership year are now due for those members whose magazine mailing label shows "182" as the final issue to be received. Members who joined during the last membership cycle and did not receive all four issues (179-182) due to a back issue shortage do not need to renew. Members who renewed early also do not need to renew their memberships. Members with mailing labels that list "182," are due to renew; members with mailing labels that list "186" or later are NOT due to renew. The membership year typically runs from July through the following June, and always include four issues of the printed Key Lock & Lantern magazine, regardless of publication schedule. The 2021-2022 membership cycle is for magazine issues #183 through #186. If you have any questions, contact Marie Brainard at [j944wb@aol.com](mailto:j944wb@aol.com) or Dave Hamilton at [transportsim@aol.com](mailto:transportsim@aol.com).

### 2021 KL&L Annual Meeting

The annual membership meeting of Key Lock & Lantern, Inc. will be held at 2:00PM on Saturday, August 14, 2021, at the Hotel Anthracite, 25 South Main Street, Carbondale, PA, 18407. All current members are invited to attend. As of the date of the publication of this notice, there are no items on the agenda which require a vote by the membership. As a result, materials for voting by proxy will not be sent, unless the need arises following the nomination period for officers and trustees. Members are invited to submit topics for discussion or presentation at the meeting by contacting KL&L president Dave Hamilton at [transportsim@aol.com](mailto:transportsim@aol.com).

### Nominations for KL&L Officers & Board

Elections for Key Lock & Lantern officer positions and Trustee at Large positions will be held at the annual meeting on August 14, 2021. In accordance with the Key Lock & Lantern bylaws, the current incumbents of all positions are

automatically renominated. Nominations for new candidates for any position should be forwarded to KL&L president Dave Hamilton via email to [transportsim@aol.com](mailto:transportsim@aol.com). Nominations for Trustee positions must be received by June 14, 2021, and for officer positions by July 14, 2021.

### Key Lock & Lantern Email Notifications

If you are not already receiving the link to this newsletter directly from KL&L, go to the "Contact KL&L" page on the Key Lock & Lantern website at [www.klnl.org](http://www.klnl.org) and sign up for our email list. You will receive links to the *KL&L News* when it is published and occasional notifications of events of interest to members. The email list is hosted by MailChimp, which makes it easy to unsubscribe at any time, and KL&L never sells or shares its email list with outside parties. Don't miss important news and announcements - sign up today!

### Want Ads for KL&L Members

As noted in previous issues, the "Want Ad" section of the *KL&L News* is undergoing an update to remove outdated notices. If you would like to submit an ad for inclusion in future issues, contact KL&L editor Dave Hamilton at [transportsim@aol.com](mailto:transportsim@aol.com). Basic want ads are free for current Key Lock & Lantern members.

### Member Address Changes & Corrections

The *Key Lock & Lantern* magazine is sent via First Class Mail and is therefore forwarded by the U.S. Postal Service for the designated period following an address change. However, due to the frequency of publication of the magazine, the time for forwarding may expire in between issues, and your magazine may be returned to KL&L. Please make sure that Key Lock & Lantern is on your list of organizations to notify in the event of a change of address. Also, please check your mailing label when receiving your copy of the magazine, and advise KL&L if any corrections are needed. Contact Marie Brainard at [j944wb@aol.com](mailto:j944wb@aol.com) if changes are required.



*Union Pacific Adams & Westlake marked UPRW with matching green cast UPRW globe - \$15,000.*



*Union Pacific by M.M. Buck with "Union Pacific" blue cast extended base globe - \$42,000.*



*Rio Grande Western by Star Headlight of Rochester with matching RGWRY clear cast globe - \$13,000.*



*Signal blue extended base globe associated with lanterns by M.M. Buck cast "Santa Fe Route" - \$19,000.*

*Continued on Page 21*



*UPRR thought to be made by George Clark with red cast "Union Pacific" extended base globe - \$13,000.*



*A&W Adams marked "Santa Fe Route" with matching red cast "Santa Fe Route" extended base globe - \$14,000.*



*Burlington & Missouri River in Nebraska by Buck with matching B&M In Neb clear cast globe - \$9,000.*



*Denver & Rio Grande M.M. Buck marked D&RGRR on bell bottom with matching red cast globe - \$13,000.*

# Railroad Event Calendar

Continued from Page 2

- Aug 12-14** **Elgin, IL** - Milwaukee Road Historical Association Convention.  
Info: [www.mrha.com](http://www.mrha.com)
- Aug 13-15** **Carbondale, PA** - Key, Lock & Lantern Convention & Railroad History Expo  
Info: [www.klnl.org](http://www.klnl.org)
- Aug 14** **Houston, TX** - The Greater Houston Train Show.  
Info: [www.sanjacmodeltrains.org](http://www.sanjacmodeltrains.org)
- ~~**Aug 14**~~ **Marion, OH** - Summerail - railroad programs & railroadiansa show.  
Info: [www.summerail.com](http://www.summerail.com)
- Aug 20-21** **Dayton, OH** - Hoosier Traction Meet. Note new location.  
Info: [www.hoosiertractionmeet.com](http://www.hoosiertractionmeet.com)
- Aug 21-22** **Dayton, OH** - Miami Valley Rail Festival at Carrillon Park.  
Info: [www.railfestival.com](http://www.railfestival.com)
- Aug 23-28** **Milwaukee, WI** - National Railway Historical Society Annual Convention.  
Info: [www.nrhs.com](http://www.nrhs.com)
- Aug 24-27** **Bethlehem, PA** - Society for Industrial Archeology Annual Conference.  
Info: [www.sia-web.org](http://www.sia-web.org)
- Aug 27-28** **Tuscola, IL** - National Association of Timetable Collectors Convention.  
Info: [www.naotc.org](http://www.naotc.org)
- Aug 28** **Atlanta, GA** - Atlanta Railroadiansa Show. Golden Spike Enterprises  
Info: [www.gserr.com](http://www.gserr.com)
- Aug 28-29** **Austin, TX** - Austin Area Train Show Austin, TX  
Info: [www.austinrailway.org](http://www.austinrailway.org)
- Aug 29** **Painesville, OH** - Painesville Railroad Museum Model Train Day Show.  
Info: [www.painesvillerrailroadmuseum.org](http://www.painesvillerrailroadmuseum.org)
- Sep 10-12** **Albany, OR** - Spokane Portland & Seattle RR Historical Society Convention.  
Info: [www.spsrhs.org](http://www.spsrhs.org)
- Sep 11** **Essex, CT** - New Haven Railroad Historical & Tech Association Reunion.  
Info: [www.nhrhta.org](http://www.nhrhta.org)
- Sep 11** **Perris, CA** - Orange Empire Railway Museum Fall Swap Meet..  
Info: [www.oerm.org](http://www.oerm.org)
- Sep 18-22** **Online Only** - Great Northern Railroad Historical Society Convention.  
Info: [www.gnrhs.org](http://www.gnrhs.org)

**Send listings to: [transportsim@aol.com](mailto:transportsim@aol.com)**

There is no charge for calendar listings. Train shows must include dealers of authentic railroad memorabilia or related material, and auctions must include at least 20 lots of railroadiansa. Other events must be directly related to railroad history (special exhibitions, lecture programs, conventions, limited excursions, etc.). Regular monthly group meetings, model train meets & scheduled tourist train trips are not eligible, unless related to a special event. Events are listed space permitting, at the editor's discretion. Listings are subject to error or change. Always check show web sites before traveling.

**Visit [www.klnl.org](http://www.klnl.org) for More Listings**



## KEY LOCK & LANTERN

Can Help Promote Your  
**Auction, Show or Event**  
With Advertising in KL&L Publications  
**2100+ Facebook Followers**  
**1200+ Monthly Web Visitors**  
**750+ Newsletter Readers**  
Contact KL&L Editor Dave Hamilton at  
[transportsim@aol.com](mailto:transportsim@aol.com)

## The New York-Pennsylvania COLLECTOR

Living with Antiques, Art & Americana

A Monthly Publication Featuring News & Articles About Antique Collecting & History



**Auction & Show Listings**  
**Club Meetings & Events**  
**Identification & Fakes**  
**Antique Restoration Tips**  
**Museums & Historic Sites**  
**Dealer & Flea Market Ads**

Subscription & Advertising Information:  
1-800-518-0875 [www.nypa-collector.com](http://www.nypa-collector.com)

# KEY LOCK & LANTERN

## Index on Computer CD

Index of all KL&L Magazines from Issue #1 through Issue #151 in searchable Acrobat (PDF) format. \$7.95 postpaid. Contact:

Marie Brainard  
35 Nordhoff Place  
Englewood, NJ 07631-4810

## Membership Brochures

Are Available in PDF Format for Printing & Distribution at Railroadiana Shows, Historical Museums, Railroad Club Meetings & Other Events

Download the Current Version at  
[www.klnl.org](http://www.klnl.org)



All submissions for the KL&L magazine, news items for the digital KL&L News & general inquiries should be sent to:

KL&L President & Editor  
David Hamilton  
244 Elm Ave  
Delmar, NY 12054  
E-mail: [transportsim@aol.com](mailto:transportsim@aol.com)

Send membership applications, dues payments, and address changes to:

KL&L Chairman John Brainard &  
VP-Membership Marie Brainard  
35 Nordhoff Place  
Englewood, NJ 07631  
E-mail: [j944wb@aol.com](mailto:j944wb@aol.com)

Join or Renew Your  
**KEY LOCK & LANTERN**  
Membership Online at  
[www.klnl.org](http://www.klnl.org)

### KL&L Membership Form (2021-2022 Membership Year)

Please make check or money order payable to Key, Lock & Lantern, Inc. and forward to: Marie Brainard, KL&L Membership, 35 Nordhoff Place, Englewood, NJ 07631-4810

Name \_\_\_\_\_

Representing (business or museum, if applicable) \_\_\_\_\_

Address \_\_\_\_\_

City \_\_\_\_\_ State/Prov \_\_\_\_\_ Zip/Mail Code \_\_\_\_\_

Phone \_\_\_\_\_ E-mail \_\_\_\_\_

Basic membership at \$30 per year (1st Class mailing in USA) or \$40 per year (non-USA).....\$ \_\_\_\_\_

Contributing membership at \$35 per year, to help support KL&L(1st Class mailing in USA)..... \$ \_\_\_\_\_

Additional Donation.....\$ \_\_\_\_\_

Enclosed is my check / money order payable to Key Lock & Lantern, Inc. for.....\$ \_\_\_\_\_

Membership in KL&L includes 4 issues of the printed magazine, special member rates for KL&L Convention registration, and access to "members only" content on the KL&L website. New members joining before September will receive all previously published magazines for the year, and will be due for renewal in the following January. New members joining in September or later will have their dues applied to the next membership period, beginning with the Jan/Feb/Mar issue, unless otherwise requested.

# COMBINED 48TH/49TH KEY LOCK & LANTERN CONVENTION

August 13-15, 2021, Carbondale, PA  
**KL&L Member Registration Form**

*Note: This form is for KL&L Members. If your dues were current at the last convention or you have joined/renewed since then, you are up to date. Others please use non-member form.*

This year's convention will be held just up the road from our last event, at the Hotel Anthracite in Carbondale, PA. On Friday, August 13th, a KL&L excursion train on the Stourbridge Line will depart from the Honesdale, PA station at 1PM (boarding at 12:45pm). The Wayne County Historical Museum and local eateries will be open in the morning. On Friday night, "room hopping" will take place at the hotel. The Transportation History Expo will be held in the hotel on Saturday, August 14th, with setup & early admission at 7:30am and regular opening at 9:00am. Exhibits and/or items for sale/trade must be related to railroad, transportation & industrial history. No misrepresented or unidentified reproductions allowed. A box lunch is available for attendees to purchase (the hotel restaurant will not be open). The annual meeting & fundraiser sale will take place at a time TBA. At 5:00pm, a buffet dinner and railroad history programs will be held in the hotel's banquet room. The Hotel Anthracite special rate is \$109 per night + tax on Friday & Saturday (for those staying longer it is \$93 + tax on Thurs & Sun). The hotel is located at 25 S. Main St, Carbondale, PA, 18407. Call (570) 536-6020 and ask for the Key, Lock & Lantern rate. **You may register online at [www.klnl.org](http://www.klnl.org), or use the attached form. A printed copy of this form has also been sent out with the magazine. Visit the KL&L website for more details. Please provide all contact information on the form, in case there are last minute changes.**

Name: \_\_\_\_\_ Companion(s): \_\_\_\_\_

Address: \_\_\_\_\_

Phone: \_\_\_\_\_ Cell Phone: \_\_\_\_\_

E-Mail: \_\_\_\_\_

*All members, companions, family members, etc. must register for \$5 each to cover administrative costs. Registration includes Expo admission during regular hours - other activities may be selected as desired.*

Registration for each Member & family/companion (includes Expo admission)..... \_\_\_\_\_ x \$5 each = \_\_\_\_\_  
Exhibit/Sales Tables (8-foot) (Includes early admission for 1 helper)..... \_\_\_\_\_ x \$35 each = \_\_\_\_\_  
Early Admission (Allows non-table holders entry to show during setup hours)..... \_\_\_\_\_ x \$15 each = \_\_\_\_\_  
Saturday Box Lunch (we will contact you later with sandwich choices)..... \_\_\_\_\_ x \$10 each = \_\_\_\_\_  
Saturday Buffet Dinner..... \_\_\_\_\_ x \$25 each = \_\_\_\_\_  
Friday Train Ride..... \_\_\_\_\_ x \$25 each = \_\_\_\_\_  
Total Submitted..... \_\_\_\_\_

Please make checks or money orders payable to **Key, Lock & Lantern, Inc.** and mail to: **Marie Brainard, 35 Nordhoff Place, Englewood, NJ 07631-4810.** If you have any questions, email John & Marie Brainard at [j944wb@aol.com](mailto:j944wb@aol.com) or call 201-569-9758 between 7 and 9 pm EST any evening, or Dave Hamilton at [transportsim@aol.com](mailto:transportsim@aol.com) or 518-526-6941.

## **Please Register & Make Hotel Reservations Early!!!**

The hotel is slightly smaller than our previous location - reserve your room early before they sell out. This year we are getting tables from an outside rental company, so last-minute table requests cannot be filled. Don't forget to order a box lunch for Saturday if you want one! Be sure to include contact info, in case of last minute changes.

***Important: Don't forget to include an email & cell phone on your registration form!***



# COMBINED 48TH/49TH KEY LOCK & LANTERN CONVENTION

August 13-15, 2021, Carbondale, PA

## Non-Member Registration Form

*Non-Members are welcome to attend the convention for a special registration fee that includes an "associate" membership in KL&L which allows participation in all events, but does not include KL&L publications.*

This year's convention will be held just up the road from our last event, at the Hotel Anthracite in Carbondale, PA. On Friday, August 13th, a KL&L excursion train on the Stourbridge Line will depart from the Honesdale, PA station at 1PM (boarding at 12:45pm). The Wayne County Historical Museum and local eateries will be open in the morning. On Friday night, "room hopping" will take place at the hotel. The Transportation History Expo will be held in the hotel on Saturday, August 14th, with setup & early admission at 7:30am and regular opening at 9:00am. Exhibits and/or items for sale/trade must be related to railroad, transportation & industrial history. No misrepresented or unidentified reproductions allowed. A box lunch is available for attendees to purchase (the hotel restaurant will not be open). The annual meeting & fundraiser sale will take place at a time TBA. At 5:00pm, a buffet dinner and railroad history programs will be held in the hotel's banquet room. The Hotel Anthracite special rate is \$109 per night + tax on Friday & Saturday (for those staying longer it is \$93 + tax on Thurs & Sun). The hotel is located at 25 S. Main St, Carbondale, PA, 18407. Call (570) 536-6020 and ask for the Key, Lock & Lantern rate. **You may register online at [www.klnl.org](http://www.klnl.org), or use the attached form. A printed copy of this form has also been sent out with the magazine. Visit the KL&L website for more details. Please provide all contact information on the form, in case there are last minute changes.**

Name: \_\_\_\_\_ Companion(s): \_\_\_\_\_

Address: \_\_\_\_\_

Phone: \_\_\_\_\_ Cell Phone: \_\_\_\_\_

E-Mail: \_\_\_\_\_

***All participants must register for \$10 each to cover administrative costs & associate membership fee. Registration includes Expo admission during regular hours - other activities may be selected as desired.***

Registration for each attendee (includes Expo admission)..... x \$10 each = \_\_\_\_\_  
Exhibit/Sales Tables (8-foot) (Includes early admission for 1 helper)..... x \$35 each = \_\_\_\_\_  
Early Admission (Allows non-table holders entry to show during setup hours)..... x \$15 each = \_\_\_\_\_  
Saturday Box Lunch (we will contact you later with sandwich choices)..... x \$10 each = \_\_\_\_\_  
Saturday Buffet Dinner..... x \$25 each = \_\_\_\_\_  
Friday Train Ride..... x \$25 each = \_\_\_\_\_  
Total Submitted.....

Please make checks or money orders payable to **Key, Lock & Lantern, Inc.** and mail to: **Marie Brainard, 35 Nordhoff Place, Englewood, NJ 07631-4810.** If you have any questions, email John & Marie Brainard at [j944wb@aol.com](mailto:j944wb@aol.com) or call 201-569-9758 between 7 and 9 pm EST any evening, or Dave Hamilton at [transportsim@aol.com](mailto:transportsim@aol.com) or 518-526-6941.

### **Please Register & Make Hotel Reservations Early!!!**

The hotel is slightly smaller than our previous location - reserve your room early before they sell out. This year we are getting tables from an outside rental company, so last-minute table requests cannot be filled. Don't forget to order a box lunch for Saturday if you want one! Be sure to include contact info, in case of last minute changes.

***Important: Don't forget to include an email & cell phone on your registration form!***

**KEY LOCK & LANTERN 48/49th ANNUAL CONVENTION**

# **2021 TRANSPORTATION HISTORY EXPOSITION**

**Rail & Industrial History Exhibits - Programs  
Memorabilia Show & Sale - Train Excursion**



**Aug 13-15, 2021  
at the  
Hotel  
Anthracite  
in downtown  
Carbondale  
Pennsylvania**

**Friday, Aug 13 - Stourbridge Line  
Train Excursion in Honesdale, PA.**

**Saturday, Aug 14 - Transportation  
Memorabilia Show/Sale & Exhibits  
9:00am-3:00pm at the Hotel  
Anthracite in Carbondale.**

**Banquet & Transportation History  
Lectures - Saturday at 5:00pm**

***All Transportation History Buffs & Collectors are Invited to  
Attend. Registration for the Saturday Exposition & Sale is \$10  
at the Door. For all other Events, Register at [www.klnl.org](http://www.klnl.org).***

**Visit the Key, Lock & Lantern Website at  
[www.klnl.org](http://www.klnl.org) and on Facebook**

# KEY LOCK & LANTERN

## 2021 Membership Form

*If Your Mailing Label Shows Issue #182, You are Due to Renew!  
If the Label Shows Issue #186, Then Your Dues are Already Paid.*

Your 2021 Membership in Key Lock & Lantern includes four 24-page issues of the printed Key Lock & Lantern magazine (Issues #183-186), e-mail notifications & links to download the bimonthly digital KL&L News, access to "members only" content on the KL&L website (currently over 20 digital back issues of the magazine, with more to come), and reduced registration fees for the annual Key Lock & Lantern Convention.

Please return the attached membership form, along with your check or money order payable to Key, Lock & Lantern, Inc., to Marie Brainard, KL&L Membership, 35 Nordhoff Place, Englewood, NJ 07631. Online renewal with Paypal or credit card is available on the KL&L website at [www.klnl.org](http://www.klnl.org). If you have any questions regarding the status of your dues, please contact VP-Membership Marie Brainard at [j944wb@aol.com](mailto:j944wb@aol.com).

Please provide all requested information, so that we may contact you if needed. KL&L does not sell its mailing list or share any information outside the organization. Your email will be added to our distribution list, hosted on Mail Chimp, which allows you to remove yourself from the list or resubscribe at any time. This list only includes your email, and no personal info.

Key Lock & Lantern, Inc. is a non-profit 501(c)(3) membership corporation registered in the State of New Jersey (EIN# 22-2914023). Membership dues are not tax-deductible, but any additional amount is deductible as a donation, as there are no extra membership benefits associated with it. Additional donations go directly to printing extra pages in the magazine; the convention and other activities are self-supporting, and all work is performed by volunteers.

Name \_\_\_\_\_

Street \_\_\_\_\_

City \_\_\_\_\_ St/Pr \_\_\_\_\_ Zip \_\_\_\_\_

E-mail \_\_\_\_\_

Phone \_\_\_\_\_ Cell \_\_\_\_\_

Regular 2021 Membership (\$30) (\$40 outside USA)..... \_\_\_\_\_

Additional Donation..... \_\_\_\_\_

**Total submitted (check or M.O. to Key, Lock & Lantern Inc.)..... \_\_\_\_\_**

**Send to: Marie Brainard, 35 Nordhoff Place, Englewood, NJ 07631**