



KEY LOCK & LANTERN NEWS

Nov/Dec 2021

Issue No.65



The Bi-Monthly Digital Supplement to Key Lock & Lantern Magazine



**Fall Railroad Shows
Begin to Return**

**Railroad History &
Preservation News**

**Railroad Memories
Catalog Auction**



KEY LOCK & LANTERN NEWS

The Bi-Monthly Digital Supplement to Key Lock & Lantern Magazine
WWW.KLNL.ORG

November/December 2021 **Issue #65**

From the President's Desk	3
Railroad Event Calendar	3
2022 Key Lock & Lantern Convention	4
Railroad Memories Auction Report	6
Railroad Shows Return in 2021	8
Western Maryland Scenic Steam	12
PA Railroad Museum Special Hours	12
Membership Form & Information	19

KL&L News Editor.....David Hamilton

Production Facilities.....NY-PA Collector Magazine

Send News Items for Publication to the Editor at:

transportsim@aol.com

Download Past Issues of the KL&L News at:

www.klnl.org

The Key, Lock & Lantern News is published bi-monthly as a digital supplement to the quarterly Key, Lock & Lantern magazine. Recipients may repost or forward complete and unmodified copies of this newsletter to other hobbyists and websites, but its content may not otherwise be copied or distributed without the permission of the KL&L Board of Trustees. Copyrights are held by the respective authors and photographers. Excerpts of news items may be published with the credit line "Key, Lock & Lantern News"

Annual membership dues for Key, Lock & Lantern are \$30 for residents of the USA, and \$40 for outside of the USA (by money order or electronic payment in US funds). Members receive four issues of the quarterly KL&L magazine, delivered via first class mail. Memberships for additional family members are \$5 each (only one magazine is sent per family). Applications for membership & address changes should be forwarded to the VP-Membership at the e-mail address listed at right. Online membership forms and dues payment via Paypal are available at www.klnl.org.

Contributions of articles, photos, and news may be forwarded to the editor at the e-mail address listed at right. Hard copy articles should be written on 8 1/2 x 11" paper, and typed or neatly printed. Photos should be sent with a caption card attached which includes the contributor's name, phone number, and description. Photocopies of advertising and supply catalogs are acceptable. The submission of material in digital format is preferred, with text files in DOC, TXT, or PDF format, and images in JPG, TIF, BMP or GIF format. Digital files may be sent by e-mail or on a computer CD or flash drive. Please contact the editor regarding optimum file sizes and formats.

By submitting material to Key, Lock & Lantern, the contributor grants permission for use in any edition of the KL&L magazine, digital newsletter, websites, and other publications. All material will be retained by KL&L for future use, unless the contributor specifically requests that it be returned, and includes a suitable, self-addressed, stamped envelope. Current deadlines are listed in the Key, Lock & Lantern Advertising Guide, which is available on the KL&L website at www.klnl.org, or by contacting the editor.

Key, Lock & Lantern

A non-profit membership corporation dedicated to the preservation of transportation history and railroad memorabilia

The mission of Key, Lock & Lantern is to gather and publish information on the history of the transportation industry, and to support the preservation of railroad artifacts. KL&L members have an interest in all aspects of railroad & transportation history, from research and preservation projects to the conservation and restoration of all types of historical memorabilia. Originally formed in 1966, Key, Lock & Lantern, Inc. was officially incorporated in 1988 as a non-profit, educational, membership corporation in the State of New Jersey, under the provisions of Section 501(c)(3) of the United States Internal Revenue Code. Membership is open to anyone with an interest in transportation history and in achieving the goals of the organization.

Officers & Trustees

Chairman of the Board

John Brainard

j944wb@aol.com

President & Editor

David Hamilton

transportsim@aol.com

VP- Membership / Treasurer

Marie Brainard

j944wb@aol.com

Secretary

(Rotates Among Trustees)

Chaplain / Sgt at Arms

Chip Greiner

Counsel

Jeremy Tuke

Historian

Peter Gores

Trustees at Large

Lyman Gray, Sam Lombardi, Joel Shaw, Sam Ferrara, Phil Simms, Leonard Gordy, Bob Lipman, Randy Bushart, William Sternitzke, Bill Roberts, Bob Myers & Joey Senese

www.klnl.org



For Current News
"Like" KL&L on

facebook

Getting Back to Normal... We Hope!

I hope that everyone has had an enjoyable holiday season, despite the ongoing pandemic, travel headaches, and supply chain issues. I have managed to get out to a few railroad auctions and shows, and thanks to online bidding, I've been able to participate in several auctions that I was unable to travel to. It has been a strange year, but still better than the previous one.

Last August, when we gathered in Carbondale for the several-times postponed Key Lock & Lantern Convention, it seemed like we were on track for things to get back to normal. The COVID vaccine was widely available, restrictions were being lifted, and many railroad history events and shows were appearing on the calendar again.

Then along came the new variants of the disease, coupled with a hesitancy by a significant portion of the population to get vaccinated, and it looked like we might be headed back to where we were at this time last year. Fortunately, although the current situation is certainly far from good, it seems like we will be able to eventually get through it. Many shows and events are on the calendar for the next few months, and we can remain optimistic that things will in fact return to normal at some point in the future.

One of the events scheduled for the spring is the 2022 Key Lock & Lantern Convention, to be held from May 5th through May 8th, once again at the Hotel Anthracite in Carbondale, PA. The convention committee is still working on final details, and registration information will be available soon, but in the meantime mark your calendar and make plans to attend. Those of us who were able to attend the last convention had a great time, and we expect to have an even bigger and better 50th annual convention.

In addition to the convention, the KL&L board of trustees is looking into the possibility of holding regional meetings beginning later in 2022. As plans for these events take shape, additional details will be announced in the KL&L News and on the KL&L website and Facebook pages. While the annual convention will remain the "main event," having smaller regional shows will hopefully provide an opportunity to get together for members who cannot attend the convention.

The first KL&L magazine for the new membership year is in production, with the continuation of several multi-part articles, and some new features. Renewal notices were sent out with the last issue, and many members had already sent in their dues, but a reminder will be sent out with the next issue for those who have not renewed.

As always, the ongoing support of our members is greatly appreciated, and I look forward to what will hopefully be the year where we finally get back to "normal." Stay healthy!

Dave Hamilton

KL&L President & Editor

Front Cover: A Santa Fe freight train between Chicago, IL & Fort Madison, IA in March, 1943. Jack Delano photo, Library of Congress.

Railroad Event Calendar



Upcoming historical society conventions, special events, railroadiana shows & auctions. Listings subject to change. Check show web sites before traveling and visit www.klnl.org for updates. See submission guidelines at the end of the calendar.

Events that have been cancelled or rescheduled due to COVID-19 have their date crossed out. Other changes are possible - check the organizations websites.

Look for Advertisements in this Issue & on the Key Lock & Lantern Website for [Events Shown in Blue](#)

- Jan 8-9** **DeLand, FL** - Florida Rail Fair. Golden Spike Enterprises.
Info: www.gserr.com.
- Jan 15** **Atlanta, GA** - Atlanta Railroad Show. Golden Spike Enterprises.
Info: www.gserr.com.
- Jan 16** **Utica, NY** - TTCS Annual Train Show. Utica Union Station. <https://www.facebook.com/TTCSUticaTrainShow>.
- Jan 23** **Griffith, IN** - Blackhawk Chapter NRHS Swap Meet Railroadiana Show.
Info: www.blackhawknrhs.org.
- Jan 29** **LaCrosse, WI** - Tri State Rail Sale train show. 4000 Foundation.
Info: <http://4000foundation.com>.
- Jan 29-30** **Springfield, MA** - Railroad Hobby Show. Eastern States Expo.
Info: www.railroadhobbyshow.com.
- Feb TBA** **Georgetown, CO** - Railroadiana Consignment Auction. Railroad Memories.
Info: www.railroadrmemories.com
- Feb 5** **Jacksonville, FL** - Jacksonville Rail Fair - Golden Spike Enterprises.
Info: www.gserr.com.
- Feb 12** **Boonsboro, MD** - Hagerstown Model RR Museum Train Show
Info: www.antietamstation.com.
- Feb 12** **Houston, TX** - Greater Houston Train Show. San Jacinto Model RR.
Info: <http://sanjacmodeltrains.org>.

Continued on Page 18

50th Annual Key Lock & Lantern Convention on Track for May

Registration information will be available soon for the 50th Annual Key Lock & Lantern Convention, to be held over the weekend of May 5-8, 2022 in Carbondale, PA. The Hotel Anthracite will once again serve as convention headquarters, with most events taking place there.

The event schedule includes early memorabilia trading and social activities on Thursday, May 5th, and a train ride and/or tours on Friday, May 6th (details to be announced). The Transportation History Exposition, with history exhibits and memorabilia for sale, will be held on Saturday, May 7th, with the annual meeting, fundraiser sale, and dinner to follow the show. The schedule for Sunday, May 8th, will remain open for those who wish to celebrate Mother's Day with their families (bring them along for a week in the Poconos) or to visit Steamtown and other historic sites.

Additional information will be announced in the KL&L News and on the KL&L website when registration is open. If you do not already receive notification of this newsletter directly from Key Lock & Lantern, sign up on our website at www.klnl.org and follow KL&L on Facebook.



The Wayne County Historical Museum in nearby Honesdale, PA. Dave Hamilton photo.



Some of the large selection of paper for sale at the 2021 KL&L Convention. Dave Hamilton photo.



Shopping at "The Antique Lantern" booth at the 2021 KL&L Convention. Dave Hamilton photo.



Exhibits of railroad, transportation & industrial memorabilia at the 2021 KL&L Convention. Dave Hamilton photo.



The KL&L Convention features displays and sales tables of a variety of railroadiana. Dave Hamilton photo.

Railroadiana Auctions - Spring & Fall - Brookline, NH

Railroadiana Consignment Auctions Held Each Spring & Fall

Brookline Auction Gallery LLC - 32 Proctor Hill Rd, Brookline, NH 03033

Auction information including photos: www.tagtown.net

Scott Czaja - Sales Manager (978) 779-2904

Highlights of Recent Sales



Concord RR Thompson Lantern: \$1700,
Triple Marked Boston & Albany New
England Glass Lantern: \$1750



Boston & Maine Railroad New
England Travel Poster with
Minuteman Logo: \$410



Grand Central Station Lantern with Green
Cast Globe: \$3100, New York New Haven &
Hartford - Hartford Division Thompson: \$2500



Cast Iron Railroad Crossing Stop,
Look & Listen Sign: \$400



Nickel Plate Road Berkshire #774
Number Board: \$2200



St. Albans Street Railway Dock
Master Hat Badge: \$625

Next Sale: April 22-23, 2022



Lehigh Valley RR brass top marker lamp: \$700
New England RR Fancy Cast Lock: \$1100



Boston & Maine RR Silver
Casserole Dish: \$800



New Haven RR Winsted, CT
Wax Sealer: \$1100



Grand Trunk Railway Brass Lock: \$1800
Pennsylvania RR cast fixed globe: \$2900



Pennsylvania Railroad Gate Sign: \$400

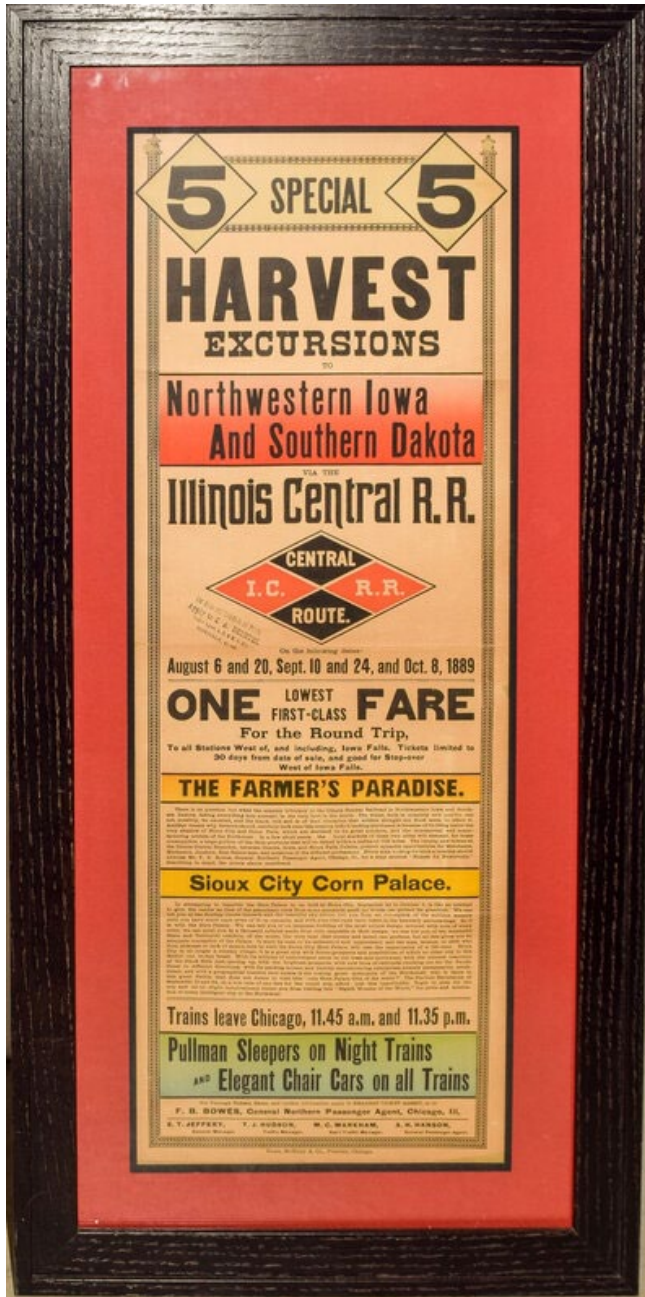


Central Vermont Railway Ticket Office &
Pullman Reservations Sign: \$675

Now on **LiveAuctioneers.com** - We also accept absentee bids via: e-mail & mail
Quality consignments are welcome for future sales - call Scott or email: sczaja@hotmail.com

Railroad Memories Auctions Continues the Sale of Several Prominent Western Collections

Railroad Memories continued the sale of memorabilia from several prominent collections in Auction #111, along with the usual selection of quality consignments. As usual, scarce artifacts from Colorado lines were the stars of the show, but collectors from other regions had plenty to bid on. Auction #112 is now being cataloged and will be online soon. *Photos and prices realized courtesy of Railroad Memories Auctions, and do not include buyers premiums and shipping.*



An 1889 Illinois Central Railroad Iowa & Dakota harvest excursion poster sold for a high bid of \$440.



A Colorado Midland brass top wire bottom lantern by Prier Brass went to a new home for a \$1000 high bid.



A \$480 bid was needed to buy this Atchison Topeka & Santa Fe Railroad California Poppy teapot by Hall.

Continued on Page 14

Railroad Memories



Offering Quality Railroadiana Since 1987

I have had the pleasure of selling many amazing pieces over the years and have proudly realized record prices! Below is just a sample of some of the stars sold in my most recent auctions.

Next Sale: February 2022



Great Northern Green
Cast Globe \$4900



Silver Otto Mears Pass
Price Realized \$7250



CRI&P BT Lantern
Price Realized \$4300



D&RG Red Cast Globe-
Price Realized \$5750



H&B VRY Key
Price Realized
\$1600



NP Milk Bottle
Price Realized \$3600



TPA Silver Pass
Price Realized \$3200



Santa Fe News Service-
Price Realized \$2800



Heisler Builders Plate-
Price Realized \$4200



Colorado & Southern-
Price Realized \$3100



GNRY Dwarf Cup
Price Realized \$1300



D&RG Demi cup
Price Realized \$3300



UP Egg Cup
Price Realized \$3600



Union Pacific Sign
Price Realized \$1400



SA&AP Cast Lock
Price Realized \$1250

P.O. Box 415
Georgetown, Colorado 80444
Phone: 303-569-5185 Fax: 303-569-5186

www.railroadmemories.com email: railroadmemories@gmail.com

Railroadiana & Train Shows Make a Cautious Return in the Fall of 2021

While many historical society events still remained cancelled or were held online in late 2021, some railroad hobby shows slowly began to return during the fall season. New waves of COVID-19 kept some meetings that required longer term planning off the calendar for the year, but many show promoters adapted their events to meet ongoing local rules and health requirements and held events despite the continuing pandemic.

Most Key Lock & Lantern members who exhibited at shows reported slightly lower attendance figures at events, and some regular dealers opted out of setting up tables. However, despite smaller crowds, sales were generally still reported as very good, and most attendees were excited about



Most of the regular dealers set up for the Gaithersburg show, with plenty of memorabilia. Dave Hamilton photo.



Derek Thomas offered a preview of upcoming Rail & Road auctions at the Gaithersburg show. Dave Hamilton photo.



Early bird buyers made purchases on Saturday at the Gaithersburg show. Dave Hamilton photo.

returning to in-person events again. The Gaithersburg show featured many tables of new material and the usual early admission crowd was eager to hunt for new finds on Friday and Saturday. While the local “at-the-door” attendance on Sunday wasn’t quite as high as usual, most KL&L members reported having a successful show.

The story was similar at many of the regional railroad hobby shows: marginally lower than usual attendance by the general public, but still plenty of serious railroad fans and collectors lined up at the door at opening time. Whatever concerns exist about the state of the economy do not seem to be affecting the demand for railroad memorabilia.

Hopefully, the latest surge in COVID cases will decline as quickly as it has arrived, and the 2022 show schedule will be able to move forward without further issues. Collectors have had a taste of getting back to normal, and we look forward to continued improvement in 2022!



Several KL&L members had tables at the Great Train Extravaganza in Albany, NY. Dave Hamilton photo.

Continued on Page 10

HAVE RAILROAD ARTIFACTS TO SELL? INSTANT CASH OFFERS AND PAYMENTS!

We have over \$1,000,000 available to purchase your collection!

WE CAN ALSO SELL YOUR ITEMS VIA ONE OF OUR MAJOR RAILROADIANA AUCTIONS

Our most recent auction of the Jack Carr Estate netted over \$1,000,000 in sales!

We will work with you to determine whether an outright sale or auction would be best for your needs.

JM HOBBY SUPPLY & RAILROAD ARTIFACTS and NORDIC AUCTIONS

We don't just buy the choice pieces---we will make an offer on everything, and travel for large collections.

One piece or 100,000 pieces---WE DO IT ALL!

Our auctions have the lowest seller's fee of all major auction firms, so you can put more in your pocket!

We will pick up large collections at no cost to you so you can avoid shipping costs. No upfront fees!

FOR IMMEDIATE OR AUCTION SALE OF YOUR COLLECTION

Contact Us at 920-857-9670



WATCH FOR OUR NEXT AUCTION! - Saturday, March 5, 2022

Lots will be posted and updated frequently at www.nordicauction.com and on Live Auctioneers!

Nordic Auction Events Center, 2713 Courtland Street, Duluth, MN 55806

Bid in person or online via Live Auctioneers! Preview on March 3 & 4, 2022

Nordic Auctions was founded in 1950 and has been performing auction services for 71 years. Let us sell your collection to our database of tens of thousands of buyers! Visit us at www.nordicauction.com.

JM Hobby Supply and Railroad Artifacts has been in the hobby industry for over 35 years, manufacturing items for model railroaders, and helping railroad museums find artifacts to add to their collections. Our staff, along with a group of fabulous volunteers do appraisals and provenance work on railroad artifacts for auctions and individual collectors nationwide. Visit us at www.jmhobbysupply.com.

**ALWAYS LOOKING FOR ARTIFACTS FROM THE FOLLOWING RAILROADS FOR
USE IN MUSEUM DISPLAYS:**

Green Bay & Western; Ahnapee & Western; Waupaca & Green Bay; Green Bay Minnesota & St Paul; Green Bay & Lake Pepin; Minnesota & Green Bay; Iola & Northern; Ettrick & Northern; Duluth South Shore & Atlantic; St. Paul & Duluth; Duluth & Northeastern; Duluth Missabe & Iron Range; Duluth Missabe & Northern; Duluth & Iron Range; Florence & Cripple Creek; Cripple Creek & Colorado Springs; Midland Terminal; Colorado Springs & Cripple Creek District RR; Escanaba & Lake Superior; Lake Superior & Ishpeming





P.K. Hannah offered his usual huge selection of timetables at the Gaithersburg show. Dave Hamilton photo.



KL&L members reported good overall sales at the Gaithersburg show. Dave Hamilton photo.



Tom Lareau had tables full of stock certificates in his usual spot at the Gaithersburg show. Dave Hamilton photo.



KL&L members look over railroadiana at the Great Train Extravaganza in Albany, NY. Dave Hamilton photo.



Times Treasures brought a variety of railroadiana to the 2021 Gaithersburg show. Dave Hamilton photo.



Key Lock & Lantern exhibited at the Fall Schoharie (NY) Railroad Museum show. Dave Hamilton photo.

Rail & Road Auctions

Accepting Consignments for 2022 Sales



Original Walter Green New York Central Calendar Painting - Sold for \$9100



Milwaukee Road Hiawatha Coach Logo - Sold for \$775



Original Santa Fe Alco Warbonnet Painting - Sold for \$2000



EMD builders plate from PRR, PC & Conrail SD45 #6133 - Sold for \$275.



Allegheny Kennerdell & Clintonville Railway pass - Sold for \$575.



Chicago, North Shore & Milwaukee Ticket Case - Sold for \$325



Pennsylvania Railroad keystone whistle sign - Sold for \$300



Chicago & Northwestern "GD" Key - Sold for \$375



1889 Burlington Route Baseball Theme Calendar - Sold for \$425



www.BIDRAR.com
765-588-3400

Bid Live Online, Phone or Absentee

Western Maryland Scenic 2-6-6-2 Steam Locomotive Enters Revenue Service

Western Maryland Scenic Railroad's restored 2-6-6-2 steam locomotive No. 1309 has finally entered regular service on the railroad, pulling several of its Polar Express runs in late December, 2021. Built by Baldwin in 1949, the locomotive hauled coal on the Chesapeake & Ohio Railroad for only six years, before being replaced by diesels. The final phases of a 7-year, \$3.5 million restoration project were completed during 2021, and the locomotive received FRA approval for operation, just in time to make its debut in revenue service on the Polar Express.

While the remaining winter season trains on the railroad will be diesel-powered, No. 1309 will haul a special photo charter train on February 26th and February 27th. Co-sponsored by Trains Magazine, tickets for the event are already sold out, but there will be opportunities for those chasing the train to catch it at numerous publicly-accessible locations. The photo special will feature ten cars of freight rolling stock to create the appearance of a freight train, and will spend both days operating over the line between Cumberland and Frostburg, MD.



The Western Maryland Scenic Railroad operates a variety of excursion trains over the former Western Maryland Railroad mainline, utilizing both the 1309 and historic diesel locomotives. For more information and train schedules, visit the railroad's website at <https://wmsr.com>. *Photo courtesy of the Western Maryland Scenic Railroad.*

Railroad Museum of Pennsylvania Offers Hours for Visitors with Special Sensory Needs

The Railroad Museum of Pennsylvania is offering new, additional open hours for children and community members with special sensory needs. During Sensory Hours, the museum will reduce lighting and sounds, and maintain a low attendance. There will be some "quiet spaces" for breaks set up in a few of our galleries. A few of the trains will be open, with museum staff present to answer questions.

Admission for this event is \$7 per person, with free admission for a paid staff member or aide. Currently, Sensory Hours are held on select Tuesdays from 3:00 PM to 5:00 PM, with last entry at 4:30 PM. Pre-registration on Eventbrite is required. The next date for these special hours is Tuesday, January 25th.

The Railroad Museum of Pennsylvania features a world-class collection of more than 100 historically significant locomotives and railroad cars – made and/or operated in Pennsylvania – as well as a collection of more than a half a million photographic images and documents, and over 17,000 smaller artifacts, including tools, uniforms, tickets, station signage, telegraph and signal equipment, works of art, and many other items used to build and operate railroads serving the Commonwealth. The Railroad Museum of Pennsylvania's mission is to document, preserve and educate the public about the Commonwealth's rich railroad history, discovering the relevance of railroads in building the nation and the role of today's railroads in our lives.



The museum is located at 300 Gap Road in Strasburg, PA, adjacent to the Strasburg Railroad. Regular hours are Wednesdays through Saturdays, 10:00 a.m. to 4:00 p.m. and Sundays, 12:00 p.m. to 4:00 p.m. For more information, contact the museum at 717-687-8628 or visit the museum website at <https://rrmuseumpa.org>. *News courtesy of the Railroad Museum of Pennsylvania. Photo by Dave Hamilton*

Dirk Soulis Auctions

www.soulisauctions.com

Lanterns Sold in Recent Auctions



AT&SF A&W w/ Red
Cast Globe - \$18,000



UPRW A&W w/ Green
Cast Globe - \$15,000



Union Pacific w/ Red
Cast Globe - \$7,000



B&M in Neb w/ Clear Cast
Globe - \$9,000



Union Pacific w/ Blue
Cast Globe - \$42,000



RGW Ry w/ Clear Cast
Globe - \$13,000



UPRR w/ Red
Cast Globe - \$13,000



D&RGRR Buck w/ Red
Cast Globe - \$13,000

In Person, Absentee, Phone & Internet Bidding.
Visit www.soulisauctions.com for information about upcoming sales



Located just outside of KANSAS CITY, MISSOURI
529 W. Lone Jack Lees Summit Road, Lone Jack, MO 64070
SoulisAuctions.com 816-697-3830



A Missouri Pacific Lines News Service badge with buzzsaw logo made by Robbins went to a new owner for \$850.



A \$700 high bid sent this scarce Crystal River Railroad 1904 annual pass to a new home.



The number plate from Denver & Rio Grande Western Alco Schenectady 2-8-0 locomotive No. 1177 sold for \$4100.



A \$2700 bid bought the American Locomotive Cooke Works builders plate from Panama Canal RR No.243.



A Handlan Denver & Rio Grande Railroad lantern with clear cast D&RGRR globe sold for a high bid of \$2150.



A \$1750 bid took home this Duluth Missabi & Northern Railroad brass six lever "pancake" lock.

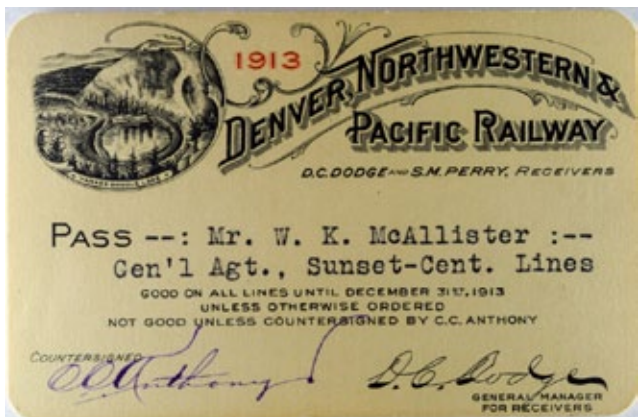
Continued on Page 15



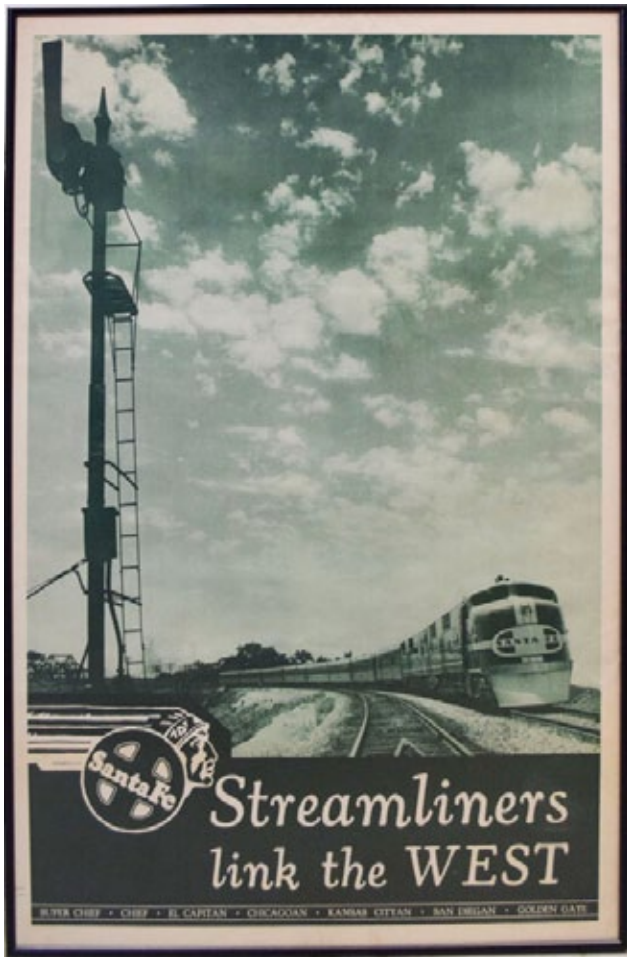
A Santa Fe Trailways red wool cap with perched eagle logo badge went to a new home for a \$400 high bid.



A nickel plated brass 6-point Special Watchman badge from the AT&SF RR sold for a bid of \$1450.



A \$950 bid purchased this 1913 annual pass from the Denver & Northwestern Pacific Railway with vignette.



A Santa Fe “Streamliners Link the West” 24x36” framed poster is hanging on a new wall for a \$500 bid.



An \$825 high bid was needed to purchase this Pacific Express Company six lever lock & key by Miller.

Continued on Page 16



A Santa Fe Baggage and Mail Helpers nickel logo badge with no hallmark sold for a high bid of \$360.



A \$7750 bid bought this Rio Grande Southern / Silverton Railroad silver filigree pass issued to Samuel Thomas.



A rough condition original Santa Fe drumhead from the Super Chief still brought a high bid of \$1850.



Switch keys: Bingham & Garfield Railway by A&W (\$525), Duluth & Iron Range RR (\$320), Hannibal & St. Joseph Railroad car cut by J.L. Howard & Co. (\$875).



A \$1000 bid was needed to buy this Santa Fe Freight Brakeman hat badge with worn enamel.

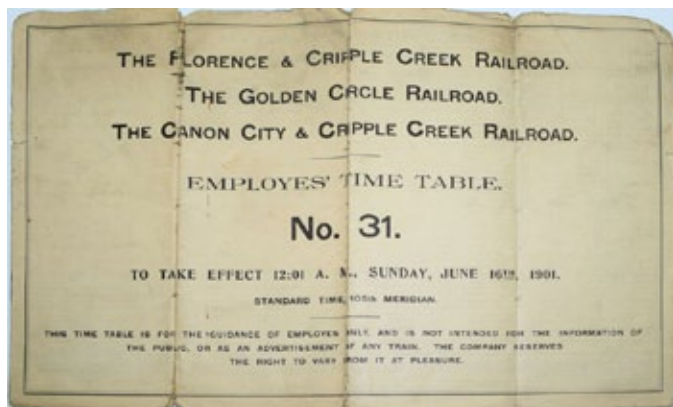


A high bid of \$1950 took home this Denver & Rio Grande RR fancy cast brass lock & key by Slaymaker.

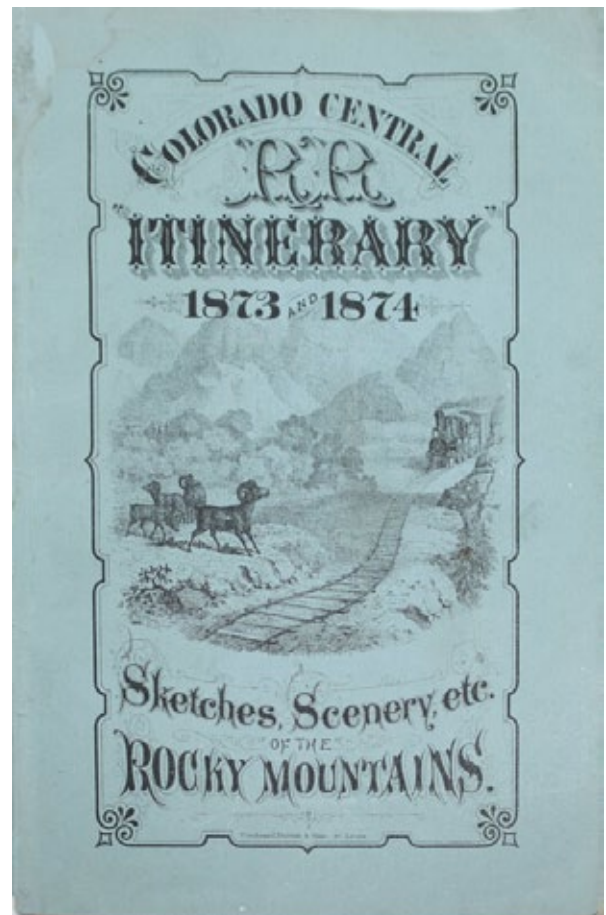
Continued on Page 17



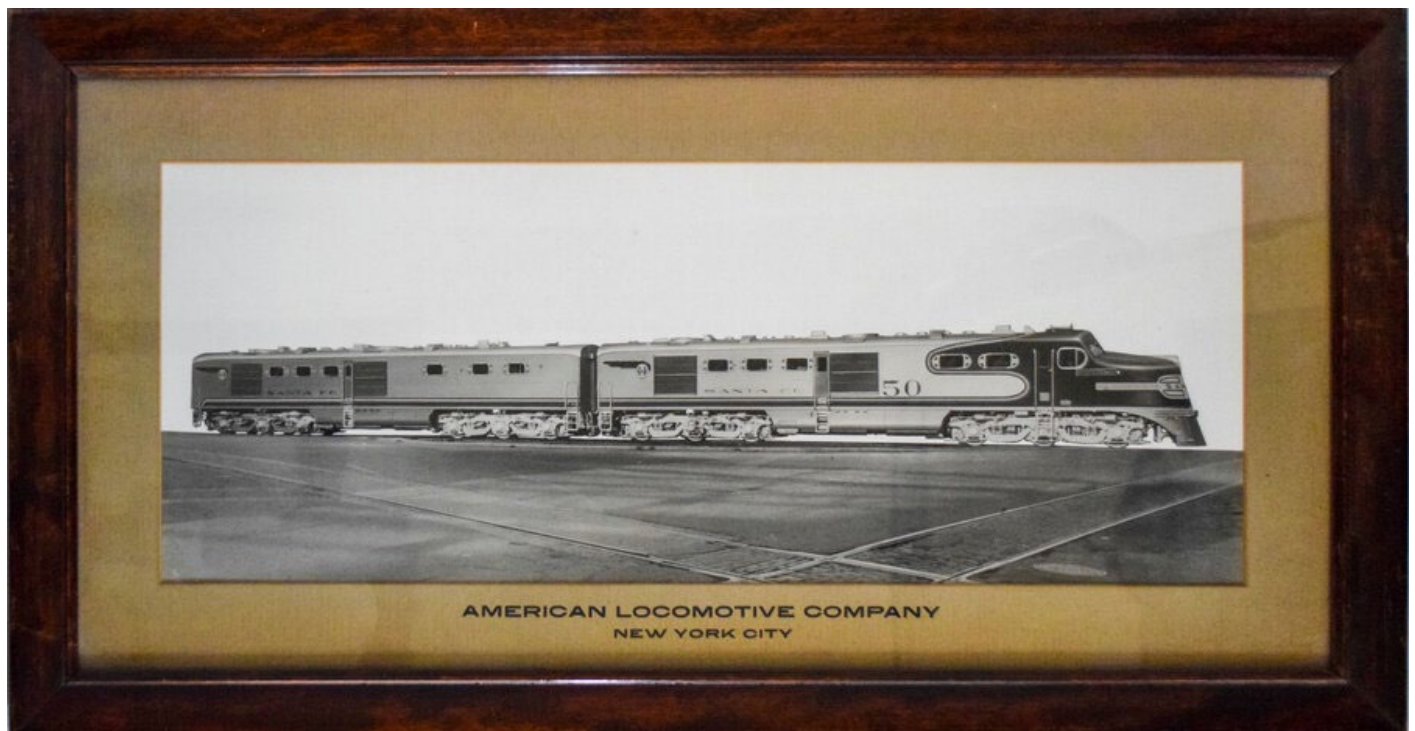
The builders plate from Chicago & Northwestern Baldwin Locomotive diesel #1240 sold for a high bid of \$1200.



A \$2800 bid took home this 1901 employee timetable from the Florence & Cripple Creek and affiliated lines.



An 1873-1874 Colorado Central Railroad Itinerary booklet went to a new caretaker for a high bid of \$2800.



A framed 29x15" Alco builder's photo of Santa Fe diesel #50 sold for a high bid of \$775.

Railroad Event Calendar

Continued from Page 2

- Feb 20 Buena Park, CA** - California Express Railroadiana Show.
Info: www.californiaexpress.net.
- Feb 25-26 Fletcher, NC** - Asheville North Carolina Train Show.
Info: www.asheville-trainshow.com.
- Feb 26-27 Allentown, PA** - Spring Thaw Train Show. Allentown Fairgrounds Ag Hall
Info: www.allentowntrainmeet.com
- Feb 26-27 Buffalo, NY** - Western NY Train Show. Erie County Fairgrounds Event Center.
Info: www.wnyrhs.org.
- Mar TBA Online Auction** - Rail & Road Auctions online railroadiana consignment auction.
Info: www.bidrar.com.
- Mar 5 Railroadiana Auction** - JM Hobby Supply & Nordic Auctions In-person & Online.
Info: www.jmhobbysupply.com.
- Mar 6 Clark, NJ** - Jersey Central NRHS Train Show. Mother Seton High School.
Info: www.jcrhs.org.
- Mar 12 Harrisburg, PA** - Harrisburg Chapter NRHS Railroad Show.
Info: <http://harrisburgnrhs.org>.
- Mar 12 Perris, CA** - Orange Empire Railway Museum Railroadiana Show & Swap Meet..
Info: www.oerm.org.
- Mar 12 St. Albans, VT** - Vermont Rails Model Railroad Show.
Info: www.nwvrrailroad.org
- Mar 19-20 Corvallis, OR** - Winterail Programs & Railroadiana Show.
Info: www.winterail.com.
- Apr 1-3 Oklahoma City, OK** - Katy Railroad Historical Society Convention.
Info: www.katyrailroad.org.
- Apr 2-3 Denver, CO** - The Rocky Mountain Train Show.
Info: <http://rockymountaintrainshow.com>
- Apr 3 Batavia, NY** - Great Batavia Train Show. Genesee Society of Model Engineers.
Info: www.gsme.org.
- Apr 9-10 Calgary, AB** - Calgary Super Train Railroad Show.
Info: www.supertrain.ca.
- Apr 9 DeLand, FL** - Florida Rail Fair. Golden Spike Enterprises.
Info: www.gserr.com.

Send listings to: transportsim@aol.com

There is no charge for calendar listings. Train shows must include dealers of authentic railroad memorabilia or related material, and auctions must include at least 20 lots of railroadiana. Other events must be directly related to railroad history (special exhibitions, lecture programs, conventions, limited excursions, etc.). Regular monthly group meetings, model train meets & scheduled tourist train trips are not eligible, unless related to a special event. Events are listed space permitting, at the editor's discretion. Listings are subject to error or change. Always check show web sites before traveling.

Visit www.klnl.org for More Listings



- Apr 16 Columbus, OH** - Buckeye Railroadiana Show by Golden Spike Enterprises.
Info: www.gserr.com.
- Apr 22-23 Brookline, NH** - Railroadiana Consignment Auction. Brookline Auction Gallery.
Info: www.tagtown.net.
- Apr 24 Griffith, IN** - Blackhawk Chapter NRHS Swap Meet Railroadiana Show.
Info: www.blackhawknrhs.org.

Important Notice!
Due to the Ongoing COVID Pandemic, Events Are Subject to Last Minute Changes.
Check Show Websites!

The New York-Pennsylvania
COLLECTOR
Living with Antiques, Art & Americana

A Monthly Publication Featuring News & Articles About Antique Collecting & History



Auction & Show Listings
Club Meetings & Events
Identification & Fakes
Antique Restoration Tips
Museums & Historic Sites
Dealer & Flea Market Ads

Subscription & Advertising Information:
1-800-518-0875 www.nypa-collector.com

KEY LOCK & LANTERN

Can Help Promote Your
Auction, Show or Event

With Advertising in KL&L Publications

2200+ Facebook Followers

1200+ Monthly Web Visits

750+ Newsletter Readers

Contact KL&L Editor Dave Hamilton at
transportsim@aol.com



**All submissions for the KL&L magazine,
news items for the digital KL&L News
& general inquiries should be sent to:**

KL&L President & Editor
David Hamilton
E-mail: transportsim@aol.com

**Send membership applications, dues
payments, and address changes to:**

KL&L Chairman John Brainard &
VP-Membership Marie Brainard
E-mail: j944wb@aol.com

Join or Renew Your
KEY LOCK & LANTERN
Membership Online at
www.klnl.org

KL&L Membership Form (2022 Membership Year)

Please make check or money order payable to Key, Lock & Lantern, Inc. and forward to:
Marie Brainard, KL&L Membership, 35 Nordhoff Place, Englewood, NJ 07631-4810

Name _____

Representing (business or museum, if applicable) _____

Address _____

City _____ State/Prov _____ Zip/Mail Code _____

Phone _____ E-mail _____

Basic membership at \$30 per year (1st Class mailing in USA) or \$40 per year (non-USA).....\$ _____

Contributing membership at \$35 per year, to help support KL&L (1st Class mailing in USA)..... \$ _____

Additional Donation.....\$ _____

Enclosed is my check / money order payable to Key Lock & Lantern, Inc. for.....\$ _____

Membership in KL&L includes 4 issues of the printed magazine, special member rates for KL&L Convention registration, and access to "members only" content on the KL&L website. New members joining before September will receive all previously published magazines for the year, and will be due for renewal in the following January. New members joining in September or later will have their dues applied to the next membership period, beginning with the Jan/Feb/Mar issue, unless otherwise requested.