



# KEY LOCK & LANTERN NEWS



Mar/Apr 2022

Issue No.67

*The Bi-Monthly Digital Supplement to Key Lock & Lantern Magazine*



**2022 Key Lock &  
Lantern Convention  
Schedule**

**Brookline Railroad  
Auction Report**

**Soulis Railroadiana  
Auction Results**



# KEY LOCK & LANTERN NEWS



The Bi-Monthly Digital Supplement to Key Lock & Lantern Magazine  
WWW.KLNL.ORG

## Key, Lock & Lantern

A non-profit membership corporation dedicated to the preservation of transportation history and railroad memorabilia

*The mission of Key, Lock & Lantern is to gather and publish information on the history of the transportation industry, and to support the preservation of railroad artifacts. KL&L members have an interest in all aspects of railroad & transportation history, from research and preservation projects to the conservation and restoration of all types of historical memorabilia. Originally formed in 1966, Key, Lock & Lantern, Inc. was officially incorporated in 1988 as a non-profit, educational, membership corporation in the State of New Jersey, under the provisions of Section 501(c)(3) of the United States Internal Revenue Code. Membership is open to anyone with an interest in transportation history and in achieving the goals of the organization.*

### Officers & Trustees

#### Chairman of the Board

John Brainard  
j944wb@aol.com

#### President & Editor

David Hamilton  
transportsim@aol.com

#### VP- Membership / Treasurer

Marie Brainard  
j944wb@aol.com

#### Secretary

(Rotates Among Trustees)

#### Chaplain / Sgt at Arms

Chip Greiner

#### Counsel

Jeremy Tuke

#### Historian

Peter Gores

#### Trustees at Large

Lyman Gray, Sam Lombardi, Joel Shaw, Sam Ferrara, Phil Simms, Leonard Gordy, Bob Lipman, Randy Bushart, William Sternitzke, Bill Roberts, Bob Myers & Joey Senese

[www.klnl.org](http://www.klnl.org)



For Current News  
"Like" KL&L on

facebook

## March/April 2022 Issue #67

From the President's Desk .....	3
Railroad Event Calendar.....	3
2022 Key Lock & Lantern Convention Schedule.....	4
Brookline Railroadiana Auction.....	6
Soulis Railroadiana Auction.....	8
KL&L Transportation History Exposition.....	11
Excursion on D&H Penn Division.....	15
KL&L Banquet Programs.....	17
KL&L to Hold Annual Meeting.....	19
Membership Form & Information.....	25
KL&L Convention Flier & Forms.....	26

**KL&L News Editor.....David Hamilton**

**Production Facilities.....NY-PA Collector Magazine**

**Send News to: [transportsim@aol.com](mailto:transportsim@aol.com)**

The Key, Lock & Lantern News is published bi-monthly as a digital supplement to the quarterly Key, Lock & Lantern magazine. Recipients may repost or forward complete and unmodified copies of this newsletter to other hobbyists and websites, but its content may not otherwise be copied or distributed without the permission of the KL&L Board of Trustees. Copyrights are held by the respective authors and photographers. Excerpts of news items may be published with the credit line "Key, Lock & Lantern News"

Annual membership dues for Key, Lock & Lantern are \$30 for residents of the USA, and \$40 for outside of the USA (by money order or electronic payment in US funds). Members receive four issues of the quarterly KL&L magazine, delivered via first class mail. Memberships for additional family members are \$5 each (only one magazine is sent per family). Applications for membership & address changes should be forwarded to the VP-Membership at the e-mail address listed at right. Online membership forms and dues payment via Paypal are available at [www.klnl.org](http://www.klnl.org).

Contributions of articles, photos, and news may be forwarded to the editor at the e-mail address listed at right. Hard copy articles should be written on 8 1/2 x 11" paper, and typed or neatly printed. Photos should be sent with a caption card attached which includes the contributor's name, phone number, and description. Photocopies of advertising and supply catalogs are acceptable. The submission of material in digital format is preferred, with text files in DOC, TXT, or PDF format, and images in JPG, TIF, BMP or GIF format. Digital files may be sent by e-mail or on a computer CD or flash drive. Please contact the editor regarding optimum file sizes and formats.

By submitting material to Key, Lock & Lantern, the contributor grants permission for use in any edition of the KL&L magazine, digital newsletter, websites, and other publications. All material will be retained by KL&L for future use, unless the contributor specifically requests that it be returned, and includes a suitable, self-addressed, stamped envelope. Current deadlines are listed in the Key, Lock & Lantern Advertising Guide, which is available on the KL&L website at [www.klnl.org](http://www.klnl.org), or by contacting the editor.

## Time for the 50th KL&L Convention!

The 50th Annual Key Lock & Lantern Convention is only one month away, and it is shaping up to be one of our best events yet. Our Friday train ride will once again feature historic rolling stock provided by the Delaware-Lackawanna Railroad, for a chartered trip over the railroad's Carbondale Line. The trip will not only cover all of the line's former Delaware & Hudson Penn Division trackage, but will also include a photo stop and tour of the company's recently opened Von Storch Locomotive Shop.

Table reservations for the show on Saturday have outpaced the amount needed for last year, and our floorplan wizard John Brainard has added an extra row to accommodate the additional requests. We have exhibitors lined up who focus on lanterns, builders plates, timetables, and everything in between. Dr. Robert Powell and Walt Kierzkowski will be back again for the evening programs, along with the return of "open projector night" for KL&L members to present material.

Many of our members are on a relentless quest for artifacts that are missing from their collections, and there will be plenty of scarce memorabilia to dig through. I always manage to find something, even though my primary interest in attending is to visit with fellow collectors. From the first KL&L meeting that I attended, not a convention has gone by where I didn't learn something or make some new friends. That is what makes the KL&L Convention such a great event – there is plenty of time in the schedule to enjoy a leisurely get-together and also to make some deals.

In recent years, we have had more timetable & paper collectors in attendance, along with collectors of non-railroad lanterns and locks. The KL&L Convention started as a "railroad hardware only" meet, but over the last ten years we have made an effort to expand the event to include all categories of memorabilia from railroads, transportation, and industry. I would like to invite more collectors of these types of antiques to attend – having even a few more exhibits will lead to them becoming a bigger part of future shows.

This is the 50th year that Key Lock & Lantern has held an event for historians and collectors of transportation memorabilia. In recent years, we've made a few changes, such as opening the show to non-members, expanding the content of exhibits, and adding activities such as train rides. Although the convention has grown in recent years, we've managed to keep that small show atmosphere.

I've been attending the convention for about twenty years now, and I always look forward to it. If you haven't been to one yet, there is no time like the present to get onboard! There is still time to register for most events (although some options are sold out, so please use online registration for the current status), and a few hotel rooms are still available.

As always, thanks for everyone's ongoing support of Key Lock & Lantern, and I hope to see you at our 50th convention in Carbondale.

*Dave Hamilton*

KL&L President & Editor

## Railroad Event Calendar



**Upcoming historical society conventions, special events, railroadiana shows & auctions. Listings subject to change. Check show web sites before traveling and visit [www.klnl.org](http://www.klnl.org) for updates. See submission guidelines at the end of the calendar.**

**Look for Advertisements in this Issue & on the Key Lock & Lantern Website for [Events Shown in Blue](#)**

- Apr 1-3** **Oklahoma City, OK** - Katy Railroad Historical Society Convention.  
Info: [www.katyrailroad.org](http://www.katyrailroad.org).
- Apr 2-3** **Denver, CO** - The Rocky Mountain Train Show.  
Info: <http://rockymountaintrainshow.com>
- Apr 2** **Indianapolis, IN** - Crossroads of America Lock & Key Show.  
Info: [j.irwin@cglobal.net](mailto:j.irwin@cglobal.net).
- Apr 3** **Batavia, NY** - Great Batavia Train Show. Genesee Society of Model Engineers.  
Info: [www.gsme.org](http://www.gsme.org).
- Apr 3** **Monaca, PA** - Beaver County Model RR & Historical Society Train Show  
Info: [www.bcmrr.railfan.net](http://www.bcmrr.railfan.net).
- Apr 9-10** **Calgary, AB** - Calgary Super Train Railroad Show.  
Info: [www.supertrain.ca](http://www.supertrain.ca).
- Apr 9** **DeLand, FL** - Florida Rail Fair. Golden Spike Enterprises.  
Info: [www.gserr.com](http://www.gserr.com).
- Apr 9** **Lone Jack, MO** - Railroadiana Auction by Soulis Auctions.  
Info: [www.soulisauctions.com](http://www.soulisauctions.com).
- Apr 10** **Amsterdam, NY** - Rails Along the Mohawk Train Show  
Info: [www.ahts.org](http://www.ahts.org).
- Apr 16** **Columbus, OH** - Buckeye Railroadiana Show by Golden Spike Enterprises.  
Info: [www.gserr.com](http://www.gserr.com).

*Continued on Page 18*

Front Cover: Rolling stock from the D&H, DL&W and EL will make up the KL&L Convention train. Photo by Dave Hamilton.

# 2022 Key Lock & Lantern Convention Schedule



A variety of activities are planned for the 2022 Key Lock & Lantern Convention, with plenty of unscheduled time to allow for visiting with fellow history buffs & collectors, and for making those “parking lot deals” that the convention is known for. There are also many other attractions of interest in the area, along with modern railroad action for train chasers. Several local museums and historic sites were covered in KL&L News #62 (available on the Publications page at [www.klnl.org](http://www.klnl.org)), so take a minute to review that issue

for more information. While a few last-minute details are being worked out, the following schedule of events outlines the activities that are planned. The schedule is subject to change, if an unforeseen event occurs, so if your email and/or cell phone number has changed since you registered, please contact Marie by email at [j944wb@aol.com](mailto:j944wb@aol.com). Some of these events are sold out, so please visit the Convention page at [www.klnl.org](http://www.klnl.org), if you are interested in registering for any of them.

## Thursday, May 5

- 9:00am-5:00pm Open schedule for those wishing to visit Steamtown, the Carbondale Historical Museum, Electric City Trolley Museum, and other local historic sites (see KL&L News Issue #62 for information).
- 5:00pm-8:00pm Dinner on your own (many KL&L members meet in the hotel restaurant).
- 8:00pm-11:00pm Informal social hour at the Hotel Anthracite lounge & early memorabilia trading.

## Friday, May 6

- 7:00am-10:00am Continental breakfast for guests at the Hotel Anthracite.
- 9:45am Check-in & boarding for KL&L excursion train at the Carbondale boarding platform shelter. KL&L volunteers will check in passengers and issue name badge passes.
- 10:00am KL&L excursion train on the Delaware-Lackawanna Railroad departs from Carbondale for a round trip over the railroad's Carbondale Line to the south end of Scranton. A photo stop at the recently opened Von Storch Locomotive Shop is planned.
- 2:30pm Approximate arrival time of KL&L excursion train back in Carbondale.
- 5:00pm-7:00pm Dinner on your own (many KL&L members meet in the hotel restaurant).
- 7:00pm-8:00pm Key Lock & Lantern Board of Trustees Meeting (officers & board members).
- 7:00pm-11:00pm Room hopping & informal social hour at the Hotel Anthracite bar & lounge.
- 11:00pm Room hopping ends. For the comfort of those going to bed early, any late get-togethers should be held in the hotel bar and/or lounge.

**Schedules Subject to Change - Please Make Sure KL&L Has Your Contact Info**

## Saturday, May 7

- 7:00am-10:00am Continental breakfast for guests at the Hotel Anthracite.
- 7:30am Convention check-in opens at the Hotel Anthracite banquet room. Table-holders and anyone who registered for early admission may enter the show room for setup.
- 9:00am The Transportation History Exposition opens in the Hotel Anthracite banquet room for those who did not register for a table or early admission. Anyone who did not register in advance is welcome to register at the door for a \$10 fee.
- 12:00pm Box lunches will be available for pickup by those who ordered them in advance. The restaurant in the hotel will NOT be open for lunch, but there is a Dunkin Donuts and a pizza shop located right across the street.
- 1:45pm Please have votes for the “Best in Show” award turned in to the registration desk.
- 2:00pm Annual membership meeting of Key Lock & Lantern at the Hotel Anthracite banquet room. The presentation of the “Best in Show” award will take place during the meeting. After the meeting, any last-minute donations to the fundraiser sale may be placed on the auction table.
- 2:20pm Annual Key Lock & Lantern fundraiser sale. Donated memorabilia will be sold in an auction style sale, with all proceeds going to support the activities of KL&L.
- 3:00pm Transportation History Exposition exhibits close - exhibitors may take down their displays.
- 5:00pm Pre-dinner social hour.
- 6:00pm Key Lock & Lantern Annual Banquet in the Hotel Anthracite banquet room for those who registered in advance.
- 7:00pm Transportation history programs, following dinner in the Hotel Anthracite banquet room. Anyone who registered (either in advance or at the door) for the Transportation History Expo is welcome to attend. Topics of the presentations include the Pennsylvania Coal Company Gravity Railroad by Dr. S. Robert Powell, movies by Walt Kierzkowski of the Ontario & Western Railway Historical Society, and slide shows by several Key Lock & Lantern members.
- 10:00pm Social hour at the Hotel Anthracite bar & lounge.

## Sunday, May 8

- 7:00am-10:00am Continental breakfast for guests at the Hotel Anthracite.
- 9:00am-5:00pm Open schedule for those wishing to visit Steamtown, the Electric City Trolley Museum, and other local historic sites (see KL&L News Issue #62 for information).

**Schedules Subject to Change - Please Make Sure KL&L Has Your Contact Info**



# Brookline Continues Sale of Several Large Railroadiana Collections & Consignments

With the ongoing sale of several prominent collections supplemented by a number of consignments, there has been a large variety of railroadiana offered at recent Brookline auctions. The fall sale was no exception, with something for almost everyone in the catalog. The spring 2022 auction will feature more memorabilia from these consignors, with the addition of scarce artifacts from KL&L member Phil Simms. *Photos and prices realized courtesy of Brookline Auction Gallery, and do not include buyers premiums and shipping.*



A \$190 bid took home this New Haven Railroad Police badge by the American Railway Supply Company.



This New England Glass brasstop bellbottom lantern from the Boston & Albany with clear cast globe sold for \$2900.



A framed 1909 Catskill Mountain Railway & Cairo Railroad timetable went to a new owner for a high bid of \$180.



Bidders interested in the Rutland Corkscrew Division competed against collectors of eastern New York railroad memorabilia and possibly some people named Brainard, driving the price of this station sign up to \$600.

## KEY LOCK & LANTERN

Ads Reach Serious Railroad Enthusiasts  
Contact KL&L at [transportsim@aol.com](mailto:transportsim@aol.com)

Continued on Page 20

# Railroadiana Auctions - Spring & Fall - Brookline, NH

Railroadiana Consignment Auctions Held Each Spring & Fall

Brookline Auction Gallery LLC - 32 Proctor Hill Rd, Brookline, NH 03033

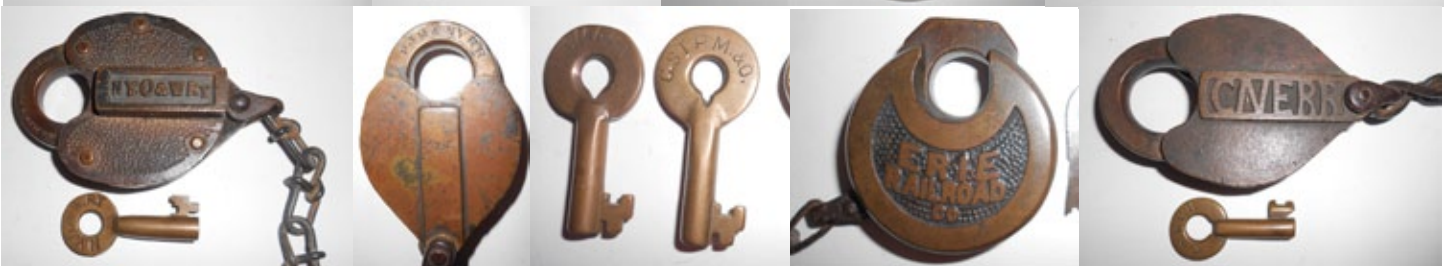
Auction information including photos: [www.tagtown.net](http://www.tagtown.net)

Scott Czaja - Sales Manager (978) 779-2904

## Next Sale: April 22-23, 2022



*Featuring Quality Memorabilia from Several Prominent Collections Including KL&L Member Phil Simms*



Now on [LiveAuctioneers.com](http://LiveAuctioneers.com) - We also accept absentee bids via: e-mail & mail  
Quality consignments are welcome for future sales - call Scott or email: [sczaja@hotmail.com](mailto:sczaja@hotmail.com)

# Memorabilia from the Ed McHugh Collection Continues to Headline Soulis Auctions

Scarce artifacts from the collection of Ed McHugh continue to be featured in the latest railroadiana auctions by Dirk Soulis of Lone Jack, MO. A nice variety of memorabilia has been offered in recent sales, ranging from rare lanterns to signs. The next installment includes advertising, timetables, and paper, along with some unusual and unique objects. *Photos and prices realized courtesy of Dirk Soulis Auctions and do not include buyers premiums and shipping.*



A Santa Fe Mimbreno compote backstamped "Santa Fe Dining Car Service" sold for a high bid of \$1200.



A \$1200 bid was needed to purchase this 22x14" Chicago & North Western Railway broadside from the early 1870's advertising service to Council Bluffs, Sioux City, Omaha, Denver, Leadville and San Francisco, California.



A \$1300 bid bought this framed Chicago Milwaukee & St. Paul Railway lithograph of Chicago Union Station.

**Railroad Museums &  
Historical Societies**  
Send in news & photos to  
**KEY LOCK & LANTERN**  
E-mail: [transportsim@aol.com](mailto:transportsim@aol.com)

Continued on Page 22



*The Ed McHugh Collection*

# Artifacts and Ephemera from The Golden Age of Rail Travel

Live Auction, In-house with Telephone, Internet and Absentee Bidding  
 Saturday, April 9th, at 10am Central time

*A large session of Un-catalogued Railroadiana sells immediately after lot 258*

15% Buyer's Premium in the Live Auction Room and through the Special VIP Bidding Link at [SoulisVIP.com](http://SoulisVIP.com)



A Rare Cranberry Glass Panel Cut to Clear



A Few Porcelain Signs



Original Illustration Art



Railroad Grade Watches



Minneapolis Sault Ste Marie and Atlantic Railway Wax Sealer



Theodolite Engraved 'B&O Railroad 27'



Early Aviation and other Posters



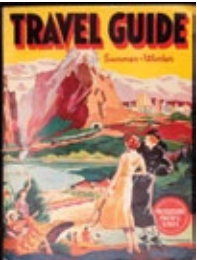
Various Gate Signs



Railroad and other Patent Models



Hannibal St. Joseph Illustrated Timetable for 1883



A Large Collection of Ephemera



A Scarce Southern Railways Carafe

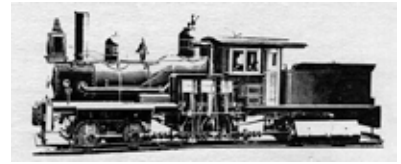


Cast Mark of PULLMAN



529 W. Lone Jack Lee's Summit Rd. Lone Jack MO | [SoulisAuctions.com](http://SoulisAuctions.com) | 816.697.3830

# Railroad Memories



Offering Quality Railroadiana Since 1987

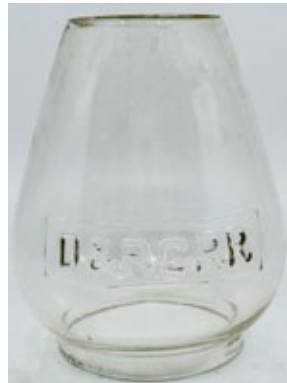
## Some Highlights of Auction #112



S.A. French Lantern  
Sold for \$1,050



DSP&P Baggage Tag  
Sold for \$2,700



D&RGRR Globe  
Sold for \$4,000



D&RG Train Box Lock  
Sold for \$2,600



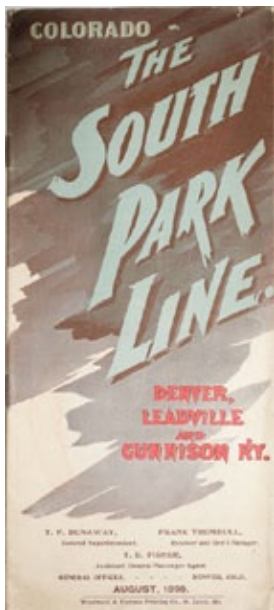
Rio Grande Western Key  
Sold for \$1,050



AT&SF Badge  
Sold for \$800



Duluth & Iron Range  
Sold for \$420



South Park Timetable  
Sold for \$5,750



Cotton Belt Logo  
Sold for \$2,800



DN&P Ry Pass  
Sold for \$1,850



SP Sunset Plate  
Sold for \$800



Colorado & Southern  
Sold for \$1,900

P.O. Box 415

Georgetown, Colorado 80444

Phone: 303-569-5185 Fax: 303-569-5186

[www.railroadmemories.com](http://www.railroadmemories.com) email: [railroadmemories@gmail.com](mailto:railroadmemories@gmail.com)

## Now Accepting Consignments for Auction #113

# Transportation History Exposition Will Feature Exhibits & Memorabilia for Sale

On May 7th, the Gravity Hall banquet room at Carbondale's Hotel Anthracite will once again be filled with transportation history exhibits and tables of authentic railroad memorabilia for sale or trade. The Transportation History Exposition is the "main event" of the Key Lock & Lantern Convention, providing members with a venue to showcase interesting artifacts from their collections and the results of their research. Over fifty tables have already been reserved in the 6000 square foot facility, and this year's event promises to be one of the largest ever.

KL&L members competing for the "Best in Show" award have presented a variety of exhibits in recent years, with topics ranging from lantern manufacturers to local railroad history. Some of the displays at last year's show included:



In addition to the displays, most exhibitors also offer authentic memorabilia for sale or trade. A collector will find every type of railroadiana at the show, from hardware to paper and everything in between. A nice selection of lanterns (including non-railroad models) is usually offered by several collectors, along with globes, founts, and other parts. Several exhibitors are experts at lantern restoration, and are always happy to give advice, or to offer their repair services. Lock and key collectors will find plenty of scarce examples for their collections, and can exchange "want lists" with others who are looking for similar artifacts.

A growing number of timetable and paper collectors have been participating in the show in recent years, with several members of the National Association of Timetable Collectors scheduled to exhibit this year. From rare 19th century employee timetables to modern public timetables in the "dollar bin," there is something available to fit every ephemera collector's budget. A variety of used books on transportation and industrial history subjects are also usually offered for sale by various exhibitors.

*Continued on Page 12*



the Nail City Lantern Company, Delaware Lackawanna & Western Railroad memorabilia, early Amtrak timetables, passes from New York & Pennsylvania railroads of the 1850-1890 period, railroad uniform badges, and an original CTC machine panel from the New York Central Railroad. The Erie Railroad, the Northern Central Railroad, the Delaware & Hudson Canal Company, the Chicago & Alton Railroad, Taylor Manufacturing Company, street & post lamps, railroad police badges, and lantern patent models have been featured in recent years.



# KL&L Transportation History Expo

Continued from Page 11

Several historical societies are also expected to have tables at the show, offering books and memorabilia for sale, and providing information about their group's activities. The Ontario & Western Railway Historical Society, Bridge Line Historical Society, Carbondale Historical Society, and Penn Central Railroad Historical society will all be represented at this year's convention. The KL&L Convention is an excellent event for networking with fellow historians, and members of these groups are looking forward to meeting collectors with similar interests.



The annual Key Lock & Lantern fundraiser sale will take place in the afternoon, with several tables of donated memorabilia sold to the highest bidder. All proceeds from this event are used to keep registration fees at a reasonable level, with the convention operating on a break-even basis every year as a result. There is always some interesting (and sometimes scarce) memorabilia to buy, and it is a great opportunity to pass along something that is no longer needed in a collection, while supporting a good cause.



Advance registration for the Key Lock & Lantern Convention, which includes admission to the Transportation History Exposition, is still open on the KL&L website at [www.klnl.org](http://www.klnl.org). The registration fee is only \$5 per person for members, and \$10 per person for non-members, with an early admission pass available for an additional \$15 fee. The early admission pass allows for entry to the exhibit hall



during setup hours of 7:30am to 9:00am, giving a head start on seeing the displays and making deals with exhibitors. Regular show hours are 9:00am to 3:00pm, with "at the door" registration available for walk-ins at \$10 per person. For updates about convention events, follow the Key Lock & Lantern page on Facebook.

# JM HOBBY SUPPLY & RAILROAD ARTIFACTS and NORDIC AUCTION

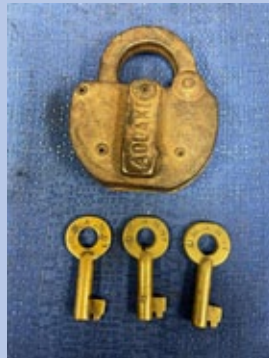
**Now Accepting Consignments for Upcoming Sales!**

**FOR IMMEDIATE OR AUCTION SALE OF YOUR COLLECTION**

**Contact Us at 920-857-9670**



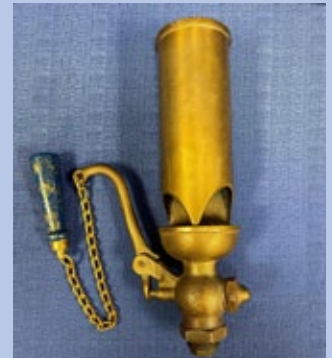
*Chicago & Northwestern Sign  
Sold for \$800*



*D&IR & DM&N  
Locks & Keys  
Sold for \$325*



*CH&D Lantern  
Sold for \$375*



*Bronze Whistle  
Sold for \$600*



*St. Paul & Duluth Lock  
Sold for \$1400*



*Highway Grade Crossing  
Sign Sold for \$250*



*DM&N Nathan Locomotive  
Horn Sold for \$2200*



*Union Pacific Bulletin  
Board Sold for \$375*



*Great Northern Step  
Box Sold for \$525*



*Great Northern Mail  
Lock Sold for \$550*

*Nordic Auction was founded in 1950 and has been performing auction services for 71 years. Let us sell your collection to our database of tens of thousands of buyers! **Visit us at [www.nordicauction.com](http://www.nordicauction.com).***

*JM Hobby Supply and Railroad Artifacts has been in the hobby industry for over 35 years, manufacturing items for model railroaders, and helping railroad museums find artifacts to add to their collections. Our staff, along with a group of fabulous volunteers do appraisals and provenance work on railroad artifacts for auctions and individual collectors nationwide. **Visit us at [www.jmhobbysupply.com](http://www.jmhobbysupply.com).***

# Rail & Road Auctions

**Now Accepting Consignments for Upcoming Sales**



*Chicago & Milwaukee  
Electric Plate \$1000*



*Leslie Locomotive  
Horn Sold for \$775*



*Railway Express Agency  
Bag Sold for \$425*



*Wig Wag Crossing  
Signal Sold for \$8000*



*NYP&B Brass Top  
Lantern Sold for \$475*



*CB&Q Blackhawk  
Plate Sold for \$475*



*Soo Line Lantern with Red  
Cast Globe Sold for \$1600*



*CTC Machine Sold for \$14000*



*Track Velocipede  
Sold for \$4100*



*Chicago Train Gate  
Sold for \$3200*



*Builders Photo Sold  
for \$2000*



*Flambeau Plate  
Sold for \$625*



*Builders Photo Sold  
for \$550*



[www.BIDRAR.com](http://www.BIDRAR.com)

765-588-3400

Bid Live Online, Phone or Absentee



*Union Pacific Advertising  
Poster Sold for \$2000*

# KL&L Excursion Train to Travel Over Delaware & Hudson Penn Division

Key Lock & Lantern Convention attendees will have an opportunity to take a ride over the remaining trackage of the Delaware & Hudson Railroad Pennsylvania Division in this year's Friday activity. This line was constructed in the 1860's, originally serving as a connection to the D&H Canal Company's gravity railroad from Honesdale. The route was later expanded, and became the spine of an all-rail route that included the Jefferson Railroad from Lanesboro (and its connection to the D&H at Nineveh) and an extension to Wilkes-Barre.



by Genesee Valley Transportation's Delaware-Lackawanna Railroad. The chartered KL&L excursion train will traverse this original portion of the D&H Canal Company's "Valley Road."

The Delaware-Lackawanna Railroad is once again providing its inspection train, which consists of an Erie-Lackawanna Comet commuter coach, a DL&W caboose, and EL business car #2. The special Key Lock & Lantern train will operate on Friday, May 6th over the entire D-L Carbondale Line from Carbondale to the end of the line at Minooka Junction (traffic permitting).

*Continued on Page 16*



DELAWARE & HUDSON CANAL CO. NORTHERN R. R. DEPT. THIS TABLE IN EFFECT MAY 15th, 1880.																		
PENNSYLVANIA DIVISION							Condensed Time-Table.											
TRAINS SOUTH.							DELAWARE & HUDSON CANAL CO. AND ERIE RAILWAY.											
IN EFFECT MAY 15th, 1880.							IN EFFECT MAY 15th, 1880.											
							EAST.			STATIONS.				WEST.				
							4'	2'	0'	1'	1'	3'	0'	1'	1'	3'	0'	
							P.M.	P.M.	A.M.	Arrive	Leave	A.M.	A.M.	P.M.	P.M.	A.M.	A.M.	P.M.
Carbondale	8:00	8:30	9:00	9:30	10:00	10:30	11:00	11:30	12:00	12:30	1:00	1:30	2:00	2:30	3:00	3:30		
Honesdale	8:15	8:45	9:15	9:45	10:15	10:45	11:15	11:45	12:15	12:45	1:15	1:45	2:15	2:45	3:15	3:45		
Scranton	8:30	9:00	9:30	10:00	10:30	11:00	11:30	12:00	12:30	1:00	1:30	2:00	2:30	3:00	3:30	4:00		
Wilkes-Barre	8:45	9:15	9:45	10:15	10:45	11:15	11:45	12:15	12:45	1:15	1:45	2:15	2:45	3:15	3:45	4:15		
Kingston	9:00	9:30	10:00	10:30	11:00	11:30	12:00	12:30	1:00	1:30	2:00	2:30	3:00	3:30	4:00	4:30		
Delaware	9:15	9:45	10:15	10:45	11:15	11:45	12:15	12:45	1:15	1:45	2:15	2:45	3:15	3:45	4:15	4:45		
Scranton	9:30	10:00	10:30	11:00	11:30	12:00	12:30	1:00	1:30	2:00	2:30	3:00	3:30	4:00	4:30	5:00		
Honesdale	9:45	10:15	10:45	11:15	11:45	12:15	12:45	1:15	1:45	2:15	2:45	3:15	3:45	4:15	4:45	5:15		
Carbondale	10:00	10:30	11:00	11:30	12:00	12:30	1:00	1:30	2:00	2:30	3:00	3:30	4:00	4:30	5:00	5:30		

In the early 1980's, the Delaware & Hudson shifted its trains to the former DL&W mainline between Binghamton and Scranton, and most of the Penn Division was abandoned. The segment of the line between Carbondale and Scranton was acquired by Lackawanna County Railroad Authority (now the Pennsylvania Northeast Regional Railroad Authority), in order to preserve service to local shippers. It is now operated

## KEY LOCK & LANTERN

### 50th Annual Convention

May 5-8, 2022, Carbondale, PA

**Register Online Today!**

[www.klnl.org](http://www.klnl.org)

# KL&L Excursion Train

Continued from Page 15

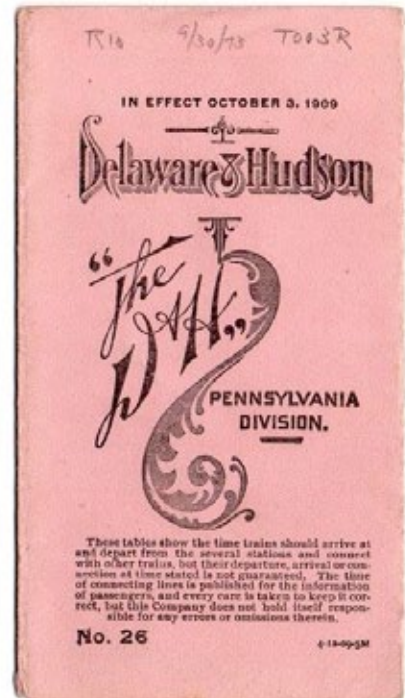
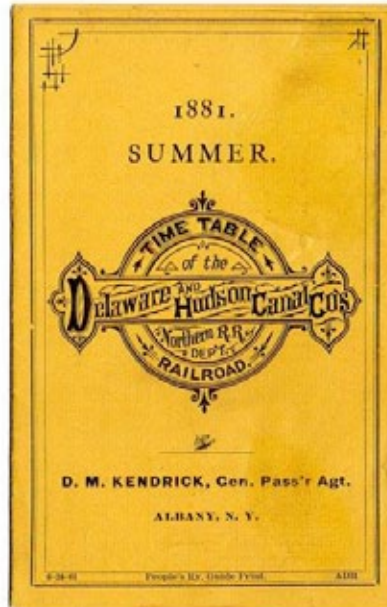
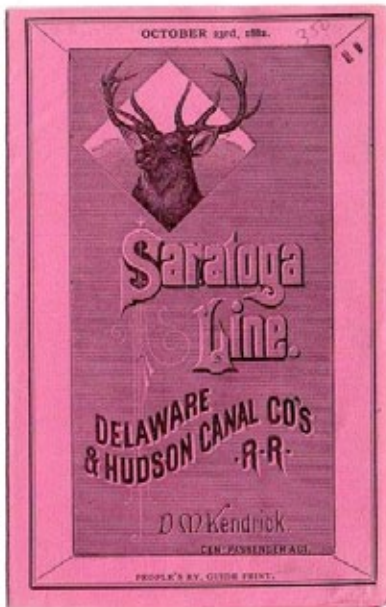
Several photo opportunities are planned along the line, including a stop at the railroad's recently opened Von Storch Locomotive Shop, where its fleet of historic Alco locomotives is maintained. A short tour of the shop will be provided, along with a chance to photograph any equipment that is in the shop for service, and the former D&H Alco RS-3 locomotives that will be pulling the KL&L train.

Boarding will begin at 9:45am on Friday, May 6th, at the Carbondale station platform on Trinity Place, with a 10:00am departure time. The train will arrive back in Carbondale at approximately 2:30pm, depending on the length of stops and any freight traffic on the line. Seats in the business car and



caboose are sold out, but seats in the coach are still available as of the date of publication of this newsletter. The fee for this event is \$35 for a coach ticket, plus the \$5 or \$10 per person convention registration fee.

To register for this event, please visit the KL&L website at [www.klnl.org](http://www.klnl.org). Due to the limited number of tickets remaining, it is not recommended to register by mail at this time. Seats are limited, so register soon!





# 2020 KL&L Convention Banquet to Feature Railroad History Programs

The 2022 Key Lock & Lantern Convention banquet dinner will be held on Saturday, May 7th, in the Gravity Hall at the Hotel Anthracite, and will once again feature railroad history presentations by convention participants. This year's schedule will return to the format of previous years, with several time slots open for KL&L members to present short programs. Two of our speakers from last year will also be back again, with programs related to the region's railroad history.



Fans of the Ontario & Western Railway have enjoyed Walter Kierzkowski's photos at several of our past conventions, and he will be bringing movies of the railroad this year, including films of a cab ride up the West Shore. Walt will also have an O&W Historical Society table at the show, and will be available to discuss the history of this long-gone but never forgotten line.

*Continued on Page 18*



Dr. S. Robert Powell of the Carbondale Historical Society will follow up last year's program on the D&H Gravity Railroad with a new presentation on the Pennsylvania Coal Company's competing line. This company operated its own gravity railroad, which first connected with the D&H Canal at Hawley, and later established a railroad connection with the Erie Railway. Dr. Powell has conducted extensive research on railroads of the region, authoring over twenty books on the subject, and his presentation this year will no doubt be as interesting as last year's program.



Pioneer Coach of Penna. Coal Co. Gravity R. R., 1847, Hawley, Pa. 44414-1



**KEY LOCK & LANTERN**  
**50th Annual Convention**  
**May 5-8, 2022, Carbondale, PA**  
**Register Online Today!**  
**[www.klnl.org](http://www.klnl.org)**

Our popular “open projector night” for KL&L members to present photos that they have taken or material from their collections will return this year. Anyone who is interested in showing up to 20 minutes of digital material should contact Dave Hamilton at [transportsim@aol.com](mailto:transportsim@aol.com). We will have a laptop computer capable of showing individual photo files as a slide show, movies in most file formats, and PowerPoint programs through a digital projector. For those wishing to use their own laptop, the projector has HDMI connections, and traditional slides and movies are welcome, but will require the presenter to bring their own projectors.



Topics already lined up include images of railroading from New York’s Southern Tier during the Erie Lackawanna to Conrail transition, from the collection of Randy Bushart, and the New England photo albums of Alan Thomas, from the collection of Dave Hamilton. Other subjects will be announced on the KL&L Facebook page as members sign up for the program.



The Gravity Hall will be open at 5:00pm for a pre-dinner social hour, and the buffet line will start at 6:00pm. Convention registrants who are not planning to attend the banquet are welcome to attend the programs after dinner – admission is included in the convention registration fee. Programs will begin between 7:00 and 7:30pm. To register for the banquet, visit the Key Lock & Lantern website at [www.klnl.org](http://www.klnl.org) and watch for program updates on the KL&L Facebook page.



# 2020 Annual Membership Meeting of Key Lock & Lantern to be Held in Carbondale

The annual membership meeting of Key Lock & Lantern, Inc. will be held at 2:00PM on Saturday, May 7, 2022, at the Hotel Anthracite, 25 South Main Street, Carbondale, PA, 18407. All current members are invited to attend.

The nomination period for Key Lock & Lantern officer and Trustee at Large positions has closed and the following new nominations have been received: officer positions: none, Trustee at Large: Michael Decker & Matthew Bushart.

The following incumbents are automatically renominated for their positions: John Brainard - Chairman of the Board, David Hamilton - President, Marie Brainard - Treasurer & VP-Membership, Chip Greiner - Chaplain & Sergeant at Arms, Jeremy Tuke - Counsel, Pete Gores - Historian. The position of Secretary remains vacant.

The following incumbents are automatically renominated for Trustee at Large positions: Lyman Gray, Sam Lombardi, Joel Shaw, Sam Ferrara, Phil Simms, Leonard Gordy, Bob Lipman, Randy Bushart, William Sternitzke, Bill Roberts, Bob Myers, and Joey Senese.

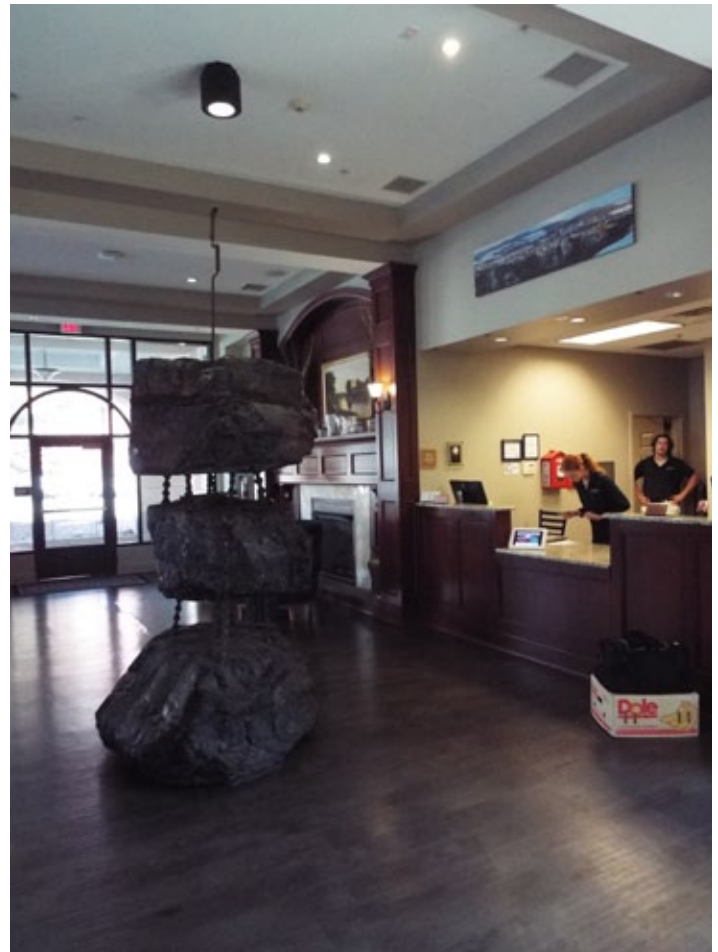
Since the officer positions are not contested, and the number of nominated Trustees at Large does not exceed the total

number of seats on the board, elections are not required and will not be held. The two new nominees will be considered elected to the position of Trustee at Large by acclamation.

The minutes of the 2021 membership and board meetings, along with the Treasurer's annual report will be presented to the KL&L Board of Trustees on May 6, 2022, and will be available for inspection upon request at the annual meeting on May 7, 2022. Any member in good standing may also request a copy of these reports from KL&L President Dave Hamilton by email at [transportsim@aol.com](mailto:transportsim@aol.com). A PDF copy of the reports will be sent upon request, following the meeting.

If any member has new business that they would like to be considered by the KL&L Board of Trustees, please forward it to KL&L President Dave Hamilton by May 1, 2022. If any member would like to present any new business at the 2022 membership meeting and is unable to attend the meeting in person, please forward it to KL&L President Dave Hamilton by May 1, 2022 and it will presented on their behalf.

Please email Key Lock & Lantern President Dave Hamilton at [transportsim@aol.com](mailto:transportsim@aol.com) with any questions regarding the upcoming meeting.





A brass pancake lock with the Delaware & Hudson script logo and working key sold for a high bid of \$500.



A \$650 bid was needed to buy this brass presentation lantern with cut globe, possibly by D.D. Miller.



A \$600 bid took home this Maine Central "Pinecone" creamer made by Mackdocks Lamberton.



A timetable from the Catskill & Tannersville and Otis Railways went to a new home for a \$400 bid.



A lot of 4 baggage tags from the Rensselaer & Saratoga and Boston & Maine sold for a high bid of \$750.

Continued on Page 21



A Dietz #6 from interurban Albany & Hudson Railroad (\$550), A clear cast New England Glass fixed globe from the Atlantic & St. Lawrence (\$925), A Parmelee & Bonnell brass top bellbottom marked for the Eastern RR (\$425).



Signs from the Rutland Railway in Rouses Point sold for a \$1600 bid.



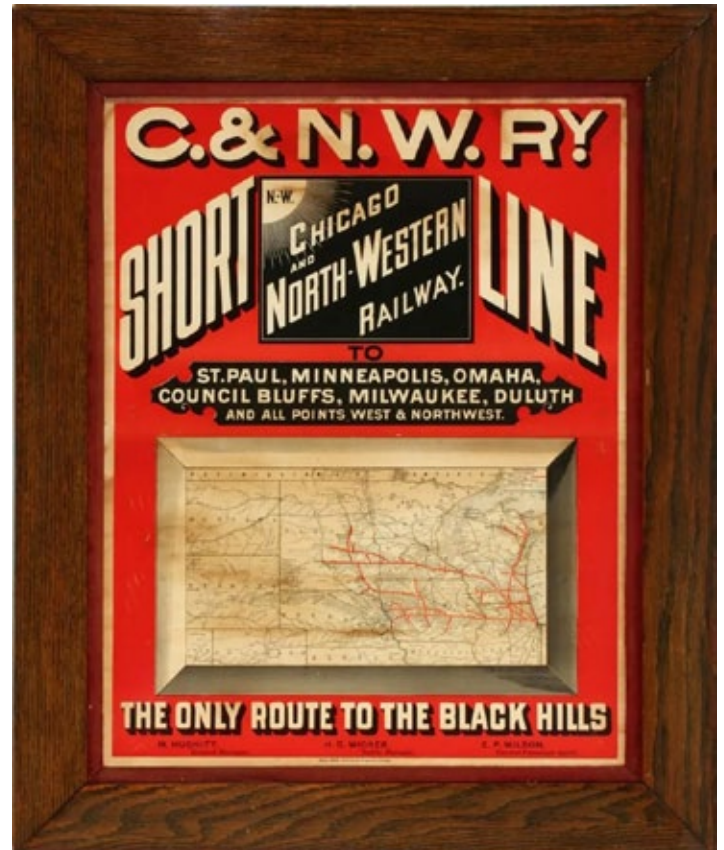
A Pennsylvania Railroad fancy cast back lock and key sold for \$200.

A \$150 high bid took home this New York Central System Conductor cap with oval logo badge.





A \$1600 bid took home this 15" double-sided cast iron "Look Out for Mail Bag When Train Passes" sign.



A 28x22" framed Chicago & Northwestern Railway advertising poster from the early 1880's with a map showing the Dakota territory before it was split into two states went to a new home for a high bid of \$9000.



A Union Pacific ceramic teapot marked Hall on the base and marked International Silver on the lid with the Streamliner logo on the top and UPRR inside sold for \$850.

Continued on Page 23

**KEY LOCK & LANTERN**

Ads Reach Serious Collectors

Contact KL&L at [transportsim@aol.com](mailto:transportsim@aol.com)



An \$1100 bid was needed to purchase this Union Pacific Overland Route logo silver plated ice bucket.



A \$3200 high bid took home this 6.75" silver plated bud vase with the Union Pacific Winged Streamliner logo marked UPRR and International Silver on the base.



A Duluth Missabe & Northern Railway "Missabe Road" demitasse set by Syracuse sold for an \$1100 high bid.



A \$700 bid purchased this 26x20" translucent panel for the Baltimore & Ohio Railroad's famed National Limited.



A Wabash "Follow the Flag" double egg cup made by Syracuse sold for a high bid of \$325.

**KEY LOCK & LANTERN**

**Can Help Promote Your  
Auction, Show or Event**

Contact KL&L at [transportsim@aol.com](mailto:transportsim@aol.com)

# Railroad Event Calendar

Continued from Page 2

- Apr 22-23 Brookline, NH** - Railroadiana Consignment Auction. Brookline Auction Gallery.  
Info: [www.tagtown.net](http://www.tagtown.net).
- Apr 24 Griffith, IN** - Blackhawk Chapter NRHS Swap Meet Railroadiana Show.  
Info: [www.blackhawknrhs.org](http://www.blackhawknrhs.org).
- Apr 29-30 Bellows Falls, VT** - Rutland Railroad Historical Society Annual Convention.  
Info: [www.rutlandrailroad.org](http://www.rutlandrailroad.org)
- May 5-8 Carbondale, PA** - Key, Lock & Lantern Convention. Transportation History Expo  
Info: [www.klnl.org](http://www.klnl.org).
- May 7 Boonsboro, MD** - Hagerstown Model RR Museum Train Show  
Info: [www.antietamstation.com](http://www.antietamstation.com).
- May 7 Columbia, PA** - Columbia Railroad Day Lectures, Films & Vendors  
Info: <https://columbiapahistory.com>.
- May 7-8 Marceline, MO** - Railroad Memorabilia & Train Show  
<http://walsworthcommunitycenter.com>
- May 11-14 Cheyenne, WY** - Union Pacific Historical Society Convention.  
Info: <http://uphs.org>.
- May 11-14 Harrisburg, PA** - Pennsylvania Railroad Tech & Historical Society Meeting.  
Info: [www.prrths.com](http://www.prrths.com).
- May 12-15 Durand, MI** - Durand Railroad Days - Various Events Around Town.  
Info: [www.durandrailroaddays.com](http://www.durandrailroaddays.com).
- May 13-15 Albany, NY** - New York Central Historical Society Convention.  
Info: <http://nycshs.org>.
- May 14 St. Cloud, MN** - The Granite City Railroad Show.  
Info: [www.granitecitytrainshow.com](http://www.granitecitytrainshow.com)
- May 15-20 Buena Park, CA** - National Railway Historical Society Annual Convention.  
Info: [www.nrhs.com](http://www.nrhs.com).
- May 15 Contoocook, NH** - Contoocook Railroad Museum Train Show.  
Info: [www.contoocookdepot.org](http://www.contoocookdepot.org)
- May 22 Mankato, MN** - Chicago & North Western Railroad Historical Society Show  
Info: [www.cnwhs.org](http://www.cnwhs.org).
- Jun 12 St. Charles, IL** - Chicago Land Railroadiana Show. Kane County Fairgrounds.  
Info: [www.rsshows.com](http://www.rsshows.com)

## Send listings to: [transportsim@aol.com](mailto:transportsim@aol.com)

There is no charge for calendar listings. Train shows must include dealers of authentic railroad memorabilia or related material, and auctions must include at least 20 lots of railroadiana. Other events must be directly related to railroad history (special exhibitions, lecture programs, conventions, limited excursions, etc.). Regular monthly group meetings, model train meets & scheduled tourist train trips are not eligible, unless related to a special event. Events are listed space permitting, at the editor's discretion. Listings are subject to error or change. Always check show web sites before traveling.

## Visit [www.klnl.org](http://www.klnl.org) for More Listings

## Key Lock & Lantern Email Notifications

If you are not already receiving the link to this newsletter directly from KL&L, go to the "Contact KL&L" page on the Key Lock & Lantern website at [www.klnl.org](http://www.klnl.org) and sign up for our email list. You will receive links to the *KL&L News* when it is published and occasional notifications of events of interest to members. The email list is hosted by MailChimp, which makes it easy to unsubscribe at any time, and KL&L never sells or shares its email list with outside parties. Don't miss important news and announcements - sign up today!

## Want Ads for KL&L Members

As noted in previous issues, the "Want Ad" section of the *KL&L News* is undergoing an update to remove outdated notices. If you would like to submit an ad for inclusion in future issues, contact KL&L editor Dave Hamilton at [transportsim@aol.com](mailto:transportsim@aol.com). Basic want ads are free for current Key Lock & Lantern members.

## Member Address Changes & Corrections

The *Key Lock & Lantern* magazine is sent via First Class Mail and is therefore forwarded by the U.S. Postal Service for the designated period following an address change. However, due to the frequency of publication of the magazine, the time for forwarding may expire in between issues, and your magazine may be returned to KL&L. Please make sure that Key Lock & Lantern is on your list of organizations to notify in the event of a change of address. Also, please check your mailing label when receiving your copy of the magazine, and advise KL&L if any corrections are needed. Contact Marie Brainard at [j944wb@aol.com](mailto:j944wb@aol.com) if changes are required.

The New York-Pennsylvania  
**COLLECTOR**  
Living with Antiques, Art & Americana  
A Monthly Publication Featuring News & Articles About Antique Collecting & History



**Auction & Show Listings**  
**Club Meetings & Events**  
**Identification & Fakes**  
**Antique Restoration Tips**  
**Museums & Historic Sites**  
**Dealer & Flea Market Ads**

Subscription & Advertising Information:  
1-800-518-0875 [www.nypa-collector.com](http://www.nypa-collector.com)



# KEY LOCK & LANTERN

Can Help Promote Your  
**Auction, Show or Event**

With Advertising in KL&L Publications

**2300+ Facebook Followers**

**200+ Daily Website Visits**

**450+ Newsletter Subscribers**

Contact KL&L Editor Dave Hamilton at  
[transportsim@aol.com](mailto:transportsim@aol.com)



**All submissions for the KL&L magazine, news items for the digital KL&L News & general inquiries should be sent to:**

KL&L President & Editor  
David Hamilton  
E-mail: [transportsim@aol.com](mailto:transportsim@aol.com)

**Send membership applications, dues payments, and address changes to:**

KL&L Chairman John Brainard &  
VP-Membership Marie Brainard  
E-mail: [j944wb@aol.com](mailto:j944wb@aol.com)

Join or Renew Your  
**KEY LOCK & LANTERN**  
Membership Online at  
[www.klnl.org](http://www.klnl.org)

## KL&L Membership Form (2022 Membership Year)

Please make check or money order payable to Key, Lock & Lantern, Inc. and forward to:  
Marie Brainard, KL&L Membership, 35 Nordhoff Place, Englewood, NJ 07631-4810

Name \_\_\_\_\_

Representing (business or museum, if applicable) \_\_\_\_\_

Address \_\_\_\_\_

City \_\_\_\_\_ State/Prov \_\_\_\_\_ Zip/Mail Code \_\_\_\_\_

Phone \_\_\_\_\_ E-mail \_\_\_\_\_

Basic membership at \$30 per year (1st Class mailing in USA) or \$40 per year (non-USA).....\$ \_\_\_\_\_

Contributing membership at \$35 per year, to help support KL&L(1st Class mailing in USA)..... \$ \_\_\_\_\_

Additional Donation.....\$ \_\_\_\_\_

Enclosed is my check / money order payable to Key Lock & Lantern, Inc. for.....\$ \_\_\_\_\_

Membership in KL&L includes 4 issues of the printed magazine, special member rates for KL&L Convention registration, and access to "members only" content on the KL&L website. New members joining before September will receive all previously published magazines for the year, and will be due for renewal in the following January. New members joining in September or later will have their dues applied to the next membership period, beginning with the Jan/Feb/Mar issue, unless otherwise requested.

**KEY LOCK & LANTERN 50th ANNUAL CONVENTION**  
**2022 TRANSPORTATION**  
**HISTORY EXPOSITION**

**Rail & Industrial History Exhibits - Programs**  
**Memorabilia Show & Sale - Train Excursion**

**May 5-8, 2022**

**at the**

**Hotel**

**Anthracite**  
**in downtown**

**Carbondale**  
**Pennsylvania**

**Friday, May 6 - D&H Penn Division**  
**Excursion Carbondale-Scranton.**

**Saturday, May 7 - Transportation**  
**Memorabilia Show/Sale & Exhibits**  
**9:00am-3:00pm at the Hotel**  
**Anthracite in Carbondale.**

**Banquet & Transportation History**  
**Lectures - Saturday at 5:00pm**



***All Transportation History Buffs & Collectors are Invited to***  
***Attend. Registration for the Saturday Exposition & Sale is \$10***  
***at the Door. For all other Events, Register at [www.klnl.org](http://www.klnl.org).***

**Visit the Key, Lock & Lantern Website at**  
**[www.klnl.org](http://www.klnl.org) and on Facebook**

# 50th ANNUAL KEY LOCK & LANTERN CONVENTION

May 5-8, 2022, Carbondale, PA

## KL&L Member Registration Form

**Note: This form is for KL&L Members. If your dues were current at the last convention or you have joined/renewed since then, you are up to date. Others please use non-member form.**

This year's convention will once again be held at the Hotel Anthracite in Carbondale, PA. On Friday, May 6th, a KL&L excursion train on the D-L Carbondale Line will depart from the Carbondale station at 10am (boarding at 9:45am), return at 2:30pm. On Friday night, "room hopping" will take place at the hotel. The Transportation History Expo will be held in the hotel on Saturday, May 7th, with setup & early admission at 7:30am and regular opening at 9:00am. Exhibits and/or items for sale/trade must be related to railroad, transportation & industrial history. No misrepresented or unidentified reproductions allowed. A box lunch is available for attendees to purchase (the hotel restaurant will not be open). The annual meeting & fundraiser sale will take place at 2pm. At 5pm, a buffet dinner and railroad history programs will be held in the hotel's banquet room. The Hotel Anthracite special rate is \$119 per night +tax. The hotel is located at 25 S. Main St, Carbondale, PA, 18407. Call (570) 536-6020 and ask for the Key, Lock & Lantern rate. **You may register online at [www.klnl.org](http://www.klnl.org), or use the attached form. Visit the KL&L website for more details. Please provide all contact information on the form, in case there are last minute changes.**

Name: \_\_\_\_\_ Companion(s): \_\_\_\_\_

Address: \_\_\_\_\_

Phone: \_\_\_\_\_ Cell Phone: \_\_\_\_\_

E-Mail: \_\_\_\_\_

*All members, companies, family members, etc. must register for \$5 each to cover administrative costs. Registration includes Expo admission during regular hours - other activities may be selected as desired.*

Registration for table member & family companion (includes Expo admission)..... \_\_\_\_\_ x \$5 each = \_\_\_\_\_

Exhibit/Sales Tables (8-foot) (includes 2 early admissions for setup)..... \_\_\_\_\_ x \$35 each = \_\_\_\_\_

Early Admission (Allows non-table holders entry to show during setup hours)..... \_\_\_\_\_ x \$15 each = \_\_\_\_\_

Saturday Box Lunch (we will contact you later with sandwich choices)..... \_\_\_\_\_ x \$12 each = \_\_\_\_\_

Saturday Buffet Dinner..... \_\_\_\_\_ x \$28 each = \_\_\_\_\_

Friday Train Ride (Coach Seat)..... \_\_\_\_\_ x \$35 each = \_\_\_\_\_

Friday Train Ride (Caboose Seat - Please Confirm Availability First)..... \_\_\_\_\_ x \$60 each = \_\_\_\_\_

Friday Train Ride (Private Car - Please Confirm Availability First)..... \_\_\_\_\_ x \$90 each = \_\_\_\_\_

Total Submitted..... \_\_\_\_\_

Please make checks or money orders payable to **Key, Lock & Lantern, Inc.** and mail to: **Marie Brainard, 35 Nordhoff Place, Englewood, NJ 07631-4810.** If you have any questions, email John & Marie Brainard at [j944wb@aol.com](mailto:j944wb@aol.com) or call 201-569-9758 between 7 and 9 pm EST any evening, or Dave Hamilton at [transportsim@aol.com](mailto:transportsim@aol.com) or 518-526-6941.

Please register early - tables are rented, so last minute requests cannot be filled. Train ride is subject to change in route and equipment. Caboose & Private Car seats are limited - reserve online or call/email first for availability. Lunch & Dinner must be reserved in advance - don't forget to order! The hotel is smaller than some previous venues - make reservations early and be sure to speak to someone at the hotel front desk to get the KL&L rate.

**Important: Don't forget to include an email & cell phone on your registration form!**

# 50th ANNUAL KEY LOCK & LANTERN CONVENTION

May 5-8, 2022, Carbondale, PA

## KL&L Non-Member Registration Form

*Non-Members are welcome to attend the convention for a special registration fee that includes an "associate" membership in KL&L which allows participation in all events, but does not include KL&L publications.*

This year's convention will once again be held at the Hotel Anthracite in Carbondale, PA. On Friday, May 6th, a KL&L excursion train on the D-L Carbondale Line will depart from the Carbondale station at 10am (boarding at 9:45am), return at 2:30pm. On Friday night, "room hopping" will take place at the hotel. The Transportation History Expo will be held in the hotel on Saturday, May 7th, with setup & early admission at 7:30am and regular opening at 9:00am. Exhibits and/or items for sale/trade must be related to railroad, transportation & industrial history. No misrepresented or unidentified reproductions allowed. A box lunch is available for attendees to purchase (the hotel restaurant will not be open). The annual meeting & fundraiser sale will take place at 2pm. At 5pm, a buffet dinner and railroad history programs will be held in the hotel's banquet room. The Hotel Anthracite special rate is \$119 per night + tax. The hotel is located at 25 S. Main St, Carbondale, PA, 18407. Call (570) 536-6020 and ask for the Key, Lock & Lantern rate. **You may register online at [www.klnl.org](http://www.klnl.org), or use the attached form. Visit the KL&L website for more details. Please provide all contact information on the form, in case there are last minute changes.**

Name: \_\_\_\_\_ Company (s): \_\_\_\_\_

Address: \_\_\_\_\_

Phone: \_\_\_\_\_ Cell Phone: \_\_\_\_\_

E-Mail: \_\_\_\_\_

*All attendees must register for each to cover administrative costs & associate membership fee. Registration includes Expo admission during regular hours - other activities may be selected as desired.*

Registration for each member & family/companion (includes Expo admission)..... \_\_\_\_\_ x \$10 each = \_\_\_\_\_

Exhibit/Sales Tables (8-foot) (includes 2 early admissions for setup)..... \_\_\_\_\_ x \$35 each = \_\_\_\_\_

Early Admission (Allows non-table holders entry to show during setup hours)..... \_\_\_\_\_ x \$15 each = \_\_\_\_\_

Saturday Box Lunch (we will contact you later with sandwich choices)..... \_\_\_\_\_ x \$12 each = \_\_\_\_\_

Saturday Buffet Dinner..... \_\_\_\_\_ x \$28 each = \_\_\_\_\_

Friday Train Ride (Coach Seat)..... \_\_\_\_\_ x \$35 each = \_\_\_\_\_

Friday Train Ride (Caboose Seat - Please Confirm Availability First)..... \_\_\_\_\_ x \$60 each = \_\_\_\_\_

Friday Train Ride (Private Car - Please Confirm Availability First)..... \_\_\_\_\_ x \$90 each = \_\_\_\_\_

Total Submitted..... \_\_\_\_\_

Please make checks or money orders payable to **Key, Lock & Lantern, Inc.** and mail to: **Marie Brainard, 35 Nordhoff Place, Englewood, NJ 07631-4810.** If you have any questions, email John & Marie Brainard at [j944wb@aol.com](mailto:j944wb@aol.com) or call 201-569-9758 between 7 and 9 pm EST any evening, or Dave Hamilton at [transportsim@aol.com](mailto:transportsim@aol.com) or 518-526-6941.

Please register early - tables are rented, so last minute requests cannot be filled. Train ride is subject to change in route and equipment. Caboose & Private Car seats are limited - reserve online or call/email first for availability. Lunch & Dinner must be reserved in advance - don't forget to order! The hotel is smaller than some previous venues - make reservations early and be sure to speak to someone at the hotel front desk to get the KL&L rate.

**Important: Don't forget to include an email & cell phone on your registration form!**