



# KEY LOCK & LANTERN NEWS

Jul/Aug 2022

Issue No.69



*The Bi-Monthly Digital Supplement to Key Lock & Lantern Magazine*



**2022 Tourist Train  
Season Back on Track**

**Rail & Road  
Auction Results**

**Railroad Museum &  
Preservation News**



# KEY LOCK & LANTERN NEWS

The Bi-Monthly Digital Supplement to Key Lock & Lantern Magazine  
WWW.KLNL.ORG

**July/August 2022** **Issue #69**

From the President's Desk .....	3
Railroad Event Calendar .....	3
Tourist Railroads & Museums Back on Track .....	4
New Mexico Open House .....	8
Colfax Railroad Days .....	8
Phillipsburg Railroad Festival .....	10
Michigan History Conference .....	10
Rail & Road Auction Report .....	12
Schoharie Train Show .....	17
Penn Central Convention .....	18
Erie Lackawanna Symposium .....	18
Membership Form & Information .....	20-21

**KL&L News Editor.....David Hamilton**

**Send News to: [transportsim@aol.com](mailto:transportsim@aol.com)**

The Key, Lock & Lantern News is published bi-monthly as a digital supplement to the quarterly Key, Lock & Lantern magazine. Recipients may repost or forward complete and unmodified copies of this newsletter to other hobbyists and websites, but its content may not otherwise be copied or distributed without the permission of the KL&L Board of Trustees. Copyrights are held by the respective authors and photographers. Excerpts of news items may be published with the credit line "Key, Lock & Lantern News"

Annual membership dues for Key, Lock & Lantern are \$30 for residents of the USA, and \$40 for outside of the USA (by money order or electronic payment in US funds). Members receive four issues of the quarterly KL&L magazine, delivered via first class mail. Memberships for additional family members are \$5 each (only one magazine is sent per family). Applications for membership & address changes should be forwarded to the VP-Membership at the e-mail address listed at right. Online membership forms and dues payment via Paypal are available at [www.klnl.org](http://www.klnl.org).

Contributions of articles, photos, and news may be forwarded to the editor at the e-mail address listed at right. Hard copy articles should be written on 8 1/2 x 11" paper, and typed or neatly printed. Photos should be sent with a caption card attached which includes the contributor's name, phone number, and description. Photocopies of advertising and supply catalogs are acceptable. The submission of material in digital format is preferred, with text files in DOC, TXT, or PDF format, and images in JPG, TIF, BMP or GIF format. Digital files may be sent by e-mail or on a computer CD or flash drive. Please contact the editor regarding optimum file sizes and formats.

By submitting material to Key, Lock & Lantern, the contributor grants permission for use in any edition of the KL&L magazine, digital newsletter, websites, and other publications. All material will be retained by KL&L for future use, unless the contributor specifically requests that it be returned, and includes a suitable, self-addressed, stamped envelope. Current deadlines are listed in the Key, Lock & Lantern Advertising Guide, which is available on the KL&L website at [www.klnl.org](http://www.klnl.org), or by contacting the editor.

## Key, Lock & Lantern

A non-profit membership corporation dedicated to the preservation of transportation history and railroad memorabilia

*The mission of Key, Lock & Lantern is to gather and publish information on the history of the transportation industry, and to support the preservation of railroad artifacts. KL&L members have an interest in all aspects of railroad & transportation history, from research and preservation projects to the conservation and restoration of all types of historical memorabilia. Originally formed in 1966, Key, Lock & Lantern, Inc. was officially incorporated in 1988 as a non-profit, educational, membership corporation in the State of New Jersey, under the provisions of Section 501(c)(3) of the United States Internal Revenue Code. Membership is open to anyone with an interest in transportation history and in achieving the goals of the organization.*

## Officers & Trustees

### Chairman of the Board

John Brainard  
[j944wb@aol.com](mailto:j944wb@aol.com)

### President & Editor

David Hamilton  
[transportsim@aol.com](mailto:transportsim@aol.com)

### VP- Membership / Treasurer

Marie Brainard  
[j944wb@aol.com](mailto:j944wb@aol.com)

### Secretary / Counsel

Jeremy Tuke

### Chaplain / Sgt at Arms

Chip Greiner

### Historian

Peter Gores

### Trustees at Large

Lyman Gray, Sam Lombardi, Joel Shaw, Sam Ferrara, Phil Simms, Leonard Gordy, Bob Lipman, Randy Bushart, William Sternitzke, Bill Roberts, Bob Myers, Joey Senese, Matthew Bushart, Michael Decker

**[www.klnl.org](http://www.klnl.org)**



For Current News  
"Like" KL&L on

**facebook**

## A “Normal” Show Season Returns



This summer has gone by quickly for me; it feels like we were just at the KL&L Convention in May, and now some of the younger KL&L members are already heading back to school. It was 35 years ago that I was returning to college after my first summer of working on the railroad, looking forward to doing it again the following year.

It is interesting to look back at the changes that have taken place in the industry since then. When I started, steam locomotives and Pullman cars were already in the distant past, cabooses and firemen had recently vanished, and at the time it seemed like not much more could change during my career. Of course, it did and many aspects of “modern” railroading are now a part of its history.

With a busy work schedule this summer (due to another thing that I wouldn’t have predicted - a shortage of railroad workers), I haven’t had many chances to get out to the local tourist railroads and museums. Many of these attractions are run by non-profit organizations that have tight budgets to begin with, and abbreviated schedules during the last two seasons have hurt the bottom line. I’m planning to take a few rides during this fall foliage season, and I would encourage everyone to patronize local railroads and historic sites that might otherwise not be visited every year. They could all use our support.

We are also right around the corner from the fall train show and historical society meeting season. It has been nice to see the show schedule getting back to normal this year, and having the chance to get together with other railroad history buffs and collectors. Plans are already in the works for next year’s KL&L Convention, scheduled for the May 11-14th weekend in Carbondale, PA. In the meantime, I hope to see other KL&L members at some of the auctions and shows this fall.

As always, thanks for everyone’s ongoing support of Key Lock & Lantern, and good luck at this fall’s auctions and shows.

*Dave Hamilton*

KL&L President & Editor

## Railroad Event Calendar



**Upcoming historical society conventions, special events, railroadiana shows & auctions. Listings subject to change. Check show web sites before traveling and visit [www.klnl.org](http://www.klnl.org) for updates. See submission guidelines at the end of the calendar.**

**Look for Advertisements in this Issue & on the Key Lock & Lantern Website for [Events Shown in Blue](http://www.klnl.org)**

- Aug 13**     **Marion, OH** - Summerail railroadiana show & programs.  
Info: <http://cincinnatiirclub.org>.
- August 19-21**     **Dayton, OH** - Hoosier Traction Meet. North American Transit Historical Society.  
Info: [www.hoosiertractionmeet.com](http://www.hoosiertractionmeet.com).
- Aug 19-20**     **New Haven, IN** - Wabash Railroad Historical Society Annual Meeting  
Info: [www.wabashrhhs.org](http://www.wabashrhhs.org).
- Aug 25-28**     **Cumberland, MD** - Baltimore & Ohio Railroad Historical Society Convention.  
Info: [www.borhs.org](http://www.borhs.org).
- Aug 26**     **Lafayette, IN** - Rail & Road Auctions Railroadiana Auction.  
Info: <https://rarauctions.com/>
- Aug 27**     **Atlanta, GA** - Atlanta Railroadiana Show. Golden Spike Enterprises.  
Info: [www.gserr.com](http://www.gserr.com)
- Aug 27-28**     **Austin, TX** - Austin Area Train Show - Model Trains & Memorabilia  
Info: [www.austinrailway.org](http://www.austinrailway.org)
- Sep 10**     **Essex, CT** - New Haven Railroad Historical & Tech Association Reunion.  
Info: [www.nhrhta.org](http://www.nhrhta.org).

*Continued on Page 30*

Front Cover: A Berkshire Scenic Railroad excursion train departs from Adams, MA in May, 2022. Photo by Dave Hamilton.

# Tourist Railroads, Museums & Organizations Get Back on Track Following the Pandemic

After an entire lost season caused by the COVID pandemic, train rides, museum activities, and historical society events began to slowly return in 2021, many with an abbreviated season or reduced schedules. This year, as new waves of the virus were kept manageable by vaccines, the current tourist train and museum season has finally returned to a more normal state.

While most history buffs are interested in the preservation role that these organizations play, it is the train rides, special programs, and themed activities for the general public that usually provide the funds needed to pay the bills. With the many COVID restrictions on gatherings now lifted, most of these events have returned to the schedule for 2022. From Easter Bunny trains to the Polar Express and the Day Out with Thomas, popular events are once again available to families who are looking for a unique entertainment experience.

*Continued on Page 6*



*Scenic railroads have largely returned to their regular schedules for the 2022 season.*



*After two years of disruptions, train shows were mostly back in their regular slots in 2022. Dave Hamilton photo.*



*Excursion train crews have been excited to be back on the job for the 2022 season. Dave Hamilton photo.*

# Railroadiana Auctions - Spring & Fall - Brookline, NH

Railroadiana Consignment Auctions Held Each Spring & Fall

Brookline Auction Gallery LLC - 32 Proctor Hill Rd, Brookline, NH 03033

Auction information including photos: [www.tagtown.net](http://www.tagtown.net)

Scott Czaja - Sales Manager (978) 779-2904

## ***Next Sale: October 14-15, 2022***



### ***Featuring the Phil Simms & Other Northeastern Collections***



Now on **LiveAuctioneers.com** - We also accept absentee bids via: e-mail & mail  
Quality consignments are welcome for future sales - call Scott or email: [sczaja@hotmail.com](mailto:sczaja@hotmail.com)

# Tourist Trains & Museums Back on Track

Continued from Page 4

Train shows and railroad historical conventions were (for the most part) able to return to their regular schedules and format for 2022, with many additional ones resuming this fall. While Zoom meetings took the place of in-person events for the last two years, traditional conventions and conferences were a welcome sight this year. Many groups have continued online events in addition to actual meetings, but the general consensus among railroad enthusiasts is that face to face meetings are still an important aspect of the hobby.

Most tourist railroads and museums have events planned throughout the fall season, along with regular fall foliage rides. After several years with limited opportunities, there is no better time than the present to go for a ride on a local tourist line or visit a museum. The extra patronage from the railroad preservation community will help get them back on track for future growth.



*The Polar Express Conductor (Bill Moll) and Santa Claus (Don Olney) greet passengers on the Adirondack Scenic Railroad in 2018. Photo courtesy of Bill Moll.*



*Passengers on the Berkshire Scenic Railroad enjoy a relaxing ride through the country. Dave Hamilton photo.*



*The New York Central Historical Society's decision to book a May, 2022 convention paid off, as restrictions were lifted.*

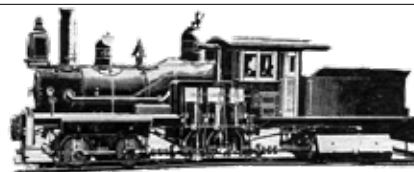


*After two years of limited operations, most railroad museums fully reopened in 2022. Dave Hamilton photo.*

**KEY LOCK & LANTERN**

**Ads Reach Serious Railroad Enthusiasts  
Contact KL&L at [transportsim@aol.com](mailto:transportsim@aol.com)**

# Railroad Memories



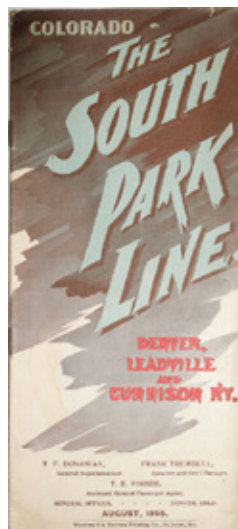
*Below Are Some Highlights of Auction #113  
Now Accepting Consignments for Upcoming Sales*



Cotton Belt Locomotive  
Logo - Sold for \$2800



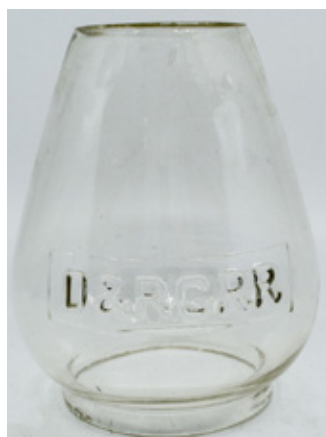
Brass A. French Lantern  
- Sold for \$1050



South Park PTT -  
Sold for \$5750



D&RG Train Box Lock -  
Sold for \$2600.



Denver & Rio Grande  
Globe - Sold for \$4000



DM&N Switch Tender Badge - Sold for \$700



Florence & Cripple Creek ETT - Sold for \$3100



Kansas Pacific TT  
- Sold for \$1300



Colorado Midland Lock -  
Sold for \$2600



DNW&P 1909 Pass -  
Sold for \$1850



UP Historical Demitasse -  
Sold for \$625



DSP&P Baggage Tag -  
Sold for \$2700

**Railroad Memories**  
PO Box 415  
Georgetown, CO 80444  
Phone: 303-569-5185

[www.railroadmemories.com](http://www.railroadmemories.com)

[railroadmemories@gmail.com](mailto:railroadmemories@gmail.com)

# New Mexico Steam Locomotive & Railroad Historical Society to Hold Open House

The New Mexico Steam Locomotive & Railroad Historical Society will hold its annual open house on Saturday, September 24, 2022 at their shop facility in Albuquerque, NM. Visitors will be given an up-close look at the group's 1944 Santa Fe Baldwin steam locomotive No. 2926. This piece of equipment is the only operating mainline steam locomotive in the state, and has undergone an extensive restoration project by the organization.

In addition to tours of the locomotive and facility, there will be model train layouts, exhibits by railroad groups, and a variety of World War II and Korean War era military vehicles on display. Entertainment will be provided by the Territorial Brass Band, Los Radiators, and Olde and In the Way. Free hot dogs and drinks will be served.

The event will take place from 9:00am to 4:00pm, at 1833 8th Street NW in Albuquerque. Accessible parking will be available in the shop parking lot; others may park in the GSA lot at 1800 12th Street, or anywhere along 8th Street. For additional information about this event, and to find more about the activities of the New Mexico Steam Locomotive & Railroad Historical Society, visit [www.2926.us](http://www.2926.us). *News and photo courtesy of the society.*



## Colfax Celebrates History With Railroad Days



Colfax, California will celebrate its role in the construction of the Transcontinental Railroad during its annual Railroad Days festival on September 17th & 18th, 2022. A variety of family-oriented and kid-friendly events will take place in downtown Colfax between 10am and 5pm each day.

Attractions will include the Black Flag Gang from Old Sacramento, the Living History Group from Coloma, a working blacksmith shop, the Stamp Mill Stompers, and the Chinese Workers Monument exhibit. There will be several model train layouts, and the Lego train exhibit for the kids. Numerous craft and food vendors are expected to attend.

Railroad enthusiasts will enjoy modern locomotives and rolling stock from the Union Pacific Railroad, that will be on display and open to the public for tours. Railroad history displays and local antique shops will also be of interest to railroad collectors and history buffs. For more information and schedules, visit <https://colfaxrailroaddays.com>. *News and photo courtesy of Colfax Railroad Days.*

**KEY LOCK & LANTERN**

Can Help Promote Your  
**Auction, Show or Event**

Contact KL&L at [transportsim@aol.com](mailto:transportsim@aol.com)

# Dirk Soulis Auctions

[www.soulisauctions.com](http://www.soulisauctions.com)

## *Lanterns Sold in Recent Auctions*



AT&SF A&W w/ Red  
Cast Globe - \$18,000



UPRW A&W w/ Green  
Cast Globe - \$15,000



Union Pacific w/ Red  
Cast Globe - \$7,000



B&M in Neb w/ Clear Cast  
Globe - \$9,000



Union Pacific w/ Blue  
Cast Globe - \$42,000



RGW Ry w/ Clear Cast  
Globe - \$13,000



UPRR w/ Red  
Cast Globe - \$13,000



D&RGRR Buck w/ Red  
Cast Globe - \$13,000

In Person, Absentee, Phone & Internet Bidding.  
Visit [www.soulisauctions.com](http://www.soulisauctions.com) for information about upcoming sales



Located just outside of KANSAS CITY, MISSOURI  
529 W. Lone Jack Lees Summit Road, Lone Jack. MO 64070  
[SoulisAuctions.com](http://SoulisAuctions.com) 816-697-3830

# Phillipsburg to Hold First Railroad Festival



The first-ever Phillipsburg, NJ Railroad Festival will take place on Saturday, September 10, 2022, celebrating the town's 170 years of prominence as a rail transportation hub. The festival, which will have three walkable areas, will kick off at 11am, with events running through 5pm.

Shappell Park and the surrounding area will host food and retail vendors and music. A miniature train ride will be operated by the Phillipsburg Railroad Historians at their nearby museum, and vintage buses will be on display from the Friends of New Jersey Transportation Heritage Center.

The first floor of the Phillipsburg Union Station, which is currently under restoration, will be open for tours. Nearby is the Phillipsburg Union Tower, a former Central Railroad of New Jersey interlocking tower, which is also expected to be open during its restoration.

The regular Delaware River Railroad excursions will also be operating during the festival, with historic equipment that includes the NYS&W steam locomotive No. 142. Tickets will be available for the River Train and the Warren County Winery Train. For more information and event schedules, visit <https://phillipsburgrailroadfest.com>. *News and photo courtesy of Phillipsburg Railroad Festival.*

## 16th Annual Michigan Railroad History Conference to Include Lectures & Trips

The 16th Annual Michigan Railroad History Conference will be held on September 16th & 17th, 2022, at the United Methodist Church of Ludington. This event will feature a bus trip to visit various railroad sites around Ludington, MI on Friday, followed by a full day of lectures on Saturday.

The bus tour will include visits to the site of the Mason & Oceana RR, White Pine Village, lunch at the Mason County Historical Society, Epworth Heights, and Hamlin Lake. The route of the tour will explore several rights of way, including the Pere Marquette and Ludington & Northern Railroad.

Saturday lecture topics include Lake Michigan Carferries, Michigan Logging Railroads, the Manistee & North Eastern Railroad, and Michigan Passenger Renaissance. In addition to lectures by historians, presentations by former carferry and past & present railroaders will be given.

Refreshments and lunch will be served during the program and exhibit space is available for local and railroad historical organizations. Following the lectures, participants are invited to meet on the SS Badger for an informal gathering, drinks, and a brief tour of the vessel.

Registration for the Friday trip is \$50 and for the Saturday conference is \$75 per person. For more information, visit the Michigan Railroads website at [www.michiganrailroads.com](http://www.michiganrailroads.com). *News courtesy of the Michigan Railroads website and photo from the Library of Congress collection.*



### Railroad Museums & Historical Societies

Send in news & photos to

**KEY LOCK & LANTERN**

E-mail: [transportsim@aol.com](mailto:transportsim@aol.com)

# JM HOBBY SUPPLY & RAILROAD ARTIFACTS and NORDIC AUCTION

## Presents Our Fall 2022 Railroadiana Auction

**Friday, October 21st & Saturday, October 22nd**

Nordic Auction Events Center, 2713 Courtland St., Duluth, MN 55806

Preview on October 19th & 20th at the Events Center

*Bidding available in-person at the Nordic Auction Events Center, or live, online, via LiveAuctioneers! This auction will also be broadcast live so you can watch the action and hear item details as the items come up for bid! Our last auction had online bidders from 45 countries! Watch for auction postings at:*

**[www.nordicauction.com](http://www.nordicauction.com), [www.jmhobbysupply.com](http://www.jmhobbysupply.com) & [www.liveauctioneers.com](http://www.liveauctioneers.com)**



### Auction Highlights:

**Large collection of keys and locks, stock certificates from the St. Paul and Duluth RR, Duluth Street Railway specimen bond (one of two known), and others, rare lanterns including D&IR cast, Columbus Railway & Light marker lamps (only known matched pair), Great Northern loco decal, Union Pacific depot clocks, railroad cap, uniform and badge collection including Seaboard, Erie, New Haven, rare railroad photo books from 1900-1940s, railroad signs, timetables, blueprints, photos, and ephemera ...and much more!**

**Now taking consignments for our Spring & Fall 2023 auctions! We offer the lowest buyers & sellers fees of any major national railroad auction service! Call us at 920-857-9670 or 218-590-3032 for information.**

# Rail & Road Auctions Continues to Build Reputation with Quality Consignments

Rail & Road may only have a handful of auctions under its belt, but auctioneer Derek Thomas' many years in the business (and as a collector of railroadiana) have helped him to grow the company into a major player in the railroadiana sales market. The spring railroadiana and fine art auction catalogs contained a variety of memorabilia for every type of collector, and reflected the increase in the number of quality consignments that the company has received. There will be additional artifacts from several collections in the summer auction, with more to come in the spring. *Photos and prices realized courtesy of Rail & Road Auctions and do not include buyers premiums and shipping.*



*An original Howard Fogg watercolor painting of the New Haven Merchants Limited sold for a \$20,000 bid.*



*A bid of \$200 took home "Watch Your Step" and "Trainmen Only Are Permitted in Cupola" porcelain signs.*



*A Burlington Route Safety First herald Seabury & Johnson metal painted first aid kit sold for a \$190 high bid.*



*An \$80 bid was needed to purchase this Stanley Pullman Super Vac Thermos, despite several dents and nicks.*

*Continued on Page 14*

# Rail & Road Auctions

**Summer Railroadiana Auction - August 26, 2022**



**Featuring the Harold Jones & Charles Stats Collections**



**www.BIDRAR.com**

**765-588-3400**

**Bid Live Online, Phone or Absentee**





A chip on this CB&Q Blackhawk dinner plate by Bauscher with 1929 back stamp kept the high bid price at \$425.



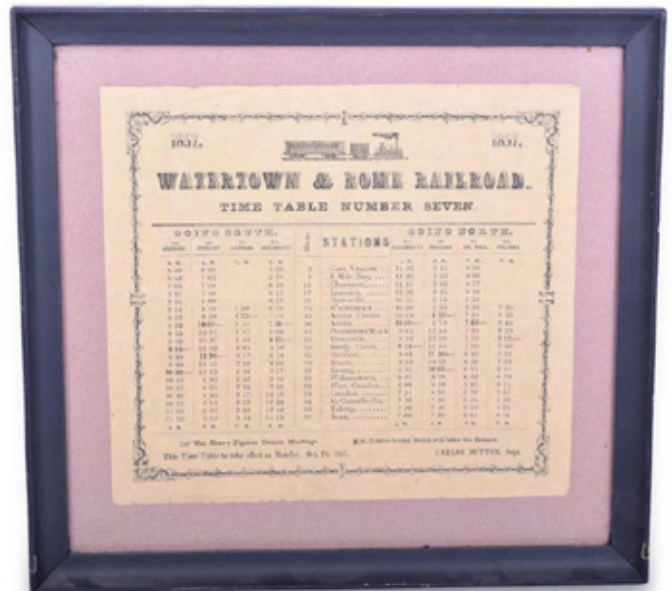
A \$425 bid was needed to take home this 21" high headlight, despite some obvious condition issues.



A high bid of \$225 took home this CB&Q steel heart lock with fancy brass logo and working unmarked key.



A Burlington Route Diesel Diagrams book including EMD, Alco, and Baldwin with 1956 & 1962 dates sold for \$190.



An 1857 Watertown & Rome Railroad broadside timetable went to a new owner for a high bid of \$375.

Continued on Page 15



*A Leslie Supertyfon S-3K locomotive horn believed to be from the Santa Fe Railroad sold for a \$775 high bid.*



*A Hamilton Railway Special 992B 16 Seconds / 21 Jewels pocket watch with light face cracking sold for a \$200 bid.*



*A \$625 bid took home this Chicago & Northwestern Shenango 10 1/2" Flambeau plate with "The 400" story.*



*A \$225 bid purchased this Pan Handle brass lock by Slaymaker of Lancaster, PA with matching key.*



*A canvas and leather Railway Express Agency messenger pouch went to a new owner for a \$425 high bid.*



*A 10 3/8" Chicago & Alton Railroad logo celery tray by Chesterton China sold for a high bid of \$250.*

Continued on Page 16



A 30" dispatcher CTC model board panel from the Santa Fe went to a new owner for a high bid of \$350.



An American Association of Dining car Superintendents Convention Plate by Syracuse sold for a high bid of \$130.



An interesting group of items from an 1897 Burlington & Missouri River Railroad train chartered by Henry Mayham from Chicago to reach his dying son in Denver. A ribbon commemorates a segment of the trip in which engineer D. Wagner made 131.6 miles in 130.5 minutes and the lot included photos of the locomotive and of Mr. Mayham. This unique collection went to a new caretaker for \$500.



A \$425 bid was needed to purchase this Burlington & Missouri in Nebraska "Station Agent" cap badge.



A brass Burlington & Missouri River Railroad lock stamped E.H. Linley and Bohannon sold for a \$225 high bid.



A \$1000 bid took home this Chicago & Milwaukee Electric Railroad Ravinia Park 6 1/2" plate by Onondaga Pottery.

# Schoharie Valley Railroad Museum to Hold Annual Model Train & Memorabilia Show

The Schoharie Valley Railroad Museum will be holding its 3rd Annual Train Show on Saturday, September 17, 2022, on the grounds of the museum in Schoharie, NY. Vendors will fill the old Mill Building with model trains, supplies, books, and memorabilia, along with displays from local historical groups. Last year's exhibitors included several collectors of railroadiana, and there were also some deals to be found on original railroad artifacts mixed in with the model trains.



*An exhibit of railroadiana at the 2021 Schoharie Valley Railroad Museum Train Show. Photo by Dave Hamilton.*

The show will be held from 10am to 4pm, with an admission fee of \$7 for adults and \$3 for kids. The museum complex is located at 143 Depot Lane in Schoharie, off Route 30, and an easy drive from Interstate 88 between Albany and Oneonta. All proceeds from the event will help support the activities of the museum.

The Schoharie Valley Railroad Museum is part of a group of local museums and historic sites operated by the Schoharie Colonial Heritage Association. The museum will be open to visitors during the show, with buildings including



*The Schoharie Valley Railroad Museum includes several buildings and rolling stock. Photo by Dave Hamilton.*

the original station house and freight house/engine house used by the Schoharie Valley and Middleburgh & Schoharie Railroads. Other structures preserved on the grounds include the Borden's Creamery and John Fain Co. coal weigh station and office building.

The museum collection also includes an 1891 combine car used in passenger service on the Middleburgh & Schoharie Railroad, a 1917 Delaware & Hudson Railroad wooden caboose, and several freight cars. A variety of memorabilia related to local railroads and industries is on display in the museum, along with a model train layout.

Nearby museums include the affiliated 1743 Palatine House and the Schoharie County Historical Society's Old Stone Fort Museum. For information about the railroad museum and show, visit [www.schoharieheritage.org](http://www.schoharieheritage.org).



*The museum's lumber mill building is filled with vendors for the annual train show. Photo by Dave Hamilton.*



*Museum buildings contain exhibits of local railroad and industrial history. Photo by Dave Hamilton.*

# Penn Central Railroad Historical Society to Hold 2022 Annual Convention in Toledo



*Penn Central freight near Batavia, NY in December, 1971.  
David Turkon photo in the Key Lock & Lantern archives.*

The schedule is shaping up for the Penn Central Railroad Historical Society's 2022 Convention, which will be held from September 22nd through 24th in the Toledo, Ohio area. Tours of local railroad and industrial sites are planned, along with lectures about the Penn Central, and displays of models and railroad memorabilia.

Activities begin on Thursday, September 22, with members slide and movie night at the Holiday Inn Express in Oregon, Ohio. Railroad memorabilia and model exhibits will be set up in the hotel, along with railroadiana for sale by members.

On Friday, September 23rd, a group tour of the NSG Glass Operations automotive glass manufacturing plant in nearby Rossford, OH will be given in the morning. In the afternoon, a 2-hour cruise onboard the "Glass City Pearl" will sail up the Maumee River. The boat provides unique views of the industries along the river, including railroad bridges and the Chesapeake & Ohio coal and ore docks.

The annual business meeting will be held on Saturday, with a block of time set aside for railfanning during the day. The convention banquet will be held at the Maumee Elks Club on Saturday evening. Membership in the organization is required to attend and is available during registration. For more information, visit [www.pccrhs.org](http://www.pccrhs.org).

# Erie Lackawanna Railroad Historical Society 2022 Annual Symposium Planned for Buffalo

The Erie Lackawanna Railroad Historical Society's 2022 Annual Symposium will be held on September 23rd and 24th in the Buffalo suburb of Hamburg, NY. The event will be held at Michael's Catering & Banquet Hall in Hamburg, with lectures planned for both days.

Activities will begin on Friday afternoon, with registration starting at 1:00pm and presentations starting and sales tables open at 2:00pm. On Saturday, September 24th, an excursion train operated by the Buffalo, Cattaraugus & Jamestown RR will depart at 10:00am for a trip over the former Buffalo & Southwestern Branch of the Erie Railroad.

Presentations will resume at 1:00pm on Saturday afternoon, followed by the organization's meeting and annual banquet at 6:00pm. The evening program will take place following dinner at 7:00pm.

The lineup of presenters is currently being arranged, and details will be available on the society website as the schedule is finalized. Membership in the organization is required to attend, and is available as part of the registration package. For more information, visit the Erie Lackawanna Railroad Historical Society website at <https://erielackhs.org>.



*Erie Lackawanna Bison Yard service track in 1967. David Turkon photo in the Key Lock & Lantern archives.*

# The New York-Pennsylvania COLLECTOR

Living with Antiques, Art & Americana

A Monthly Publication Featuring News & Articles  
About Antique Collecting & History



- Auction & Show Listings
- Club Meetings & Events
- Identification & Fakes
- Antique Restoration Tips
- Museums & Historic Sites
- Dealer & Flea Market Ads

Online Event Calendar  
Online Show & Dealer Ads  
Subscriptions  
Advertising Information

[www.nypa-collector.com](http://www.nypa-collector.com)

**NYPA-Collector**

# Railroad Event Calendar

Continued from Page 2

- Sep 10** **Perris, CA** - Orange Empire Railway Museum Fall Swap Meet..  
Info: [www.oerm.org](http://www.oerm.org).
- Sep 10** **Phillipsburg, NJ** - Phillipsburg Railroad Festival.  
Info: <https://phillipsburgrailroadfest.com>.
- Sep 14-17** **Modesto, CA** - Southern Pacific Historical & Technical Society Annual Convention  
Info: [www.sphts.org](http://www.sphts.org).
- Sep 16-17** **Durango, CO** - National Association of Timetable Collectors Convention.  
Info: [www.naotc.org](http://www.naotc.org).
- Sep 16-17** **Ludington, MI** - Michigan Railroad History Conference.  
Info: [www.michiganrailroads.com](http://www.michiganrailroads.com).
- Sep 16-18** **Michigan City, IN** - Monon Railroad Historical & Technical Society Convention.  
Info: [www.monon.org](http://www.monon.org).
- Sep 17-18** **Colfax, CA** - Colfax, California Railroad Days Celebration.  
Info: <https://colfaxrailroaddays.com>.
- Sep 17-18** **Colorado Springs, CO** - Train Expo Colorado Train Show.  
Info: [www.tecoshow.org](http://www.tecoshow.org).
- Sep 17-21** **Nelson, BC** - Great Northern Railroad Historical Society Convention.  
Info: [www.gnrhs.org](http://www.gnrhs.org).
- Sep 17** **Schoharie, NY** - Schoharie Valley Railroad Museum Train Show.  
Info: [www.schoharieheritage.org](http://www.schoharieheritage.org).
- Sep 23-25** **Amherst, MA** - Central Vermont Railway Historical Society Convention  
Info: [www.cvrhs.com](http://www.cvrhs.com).
- Sep 23-24** **Bend, OR** - Spokane Portland & Seattle RR Historical Society Convention.  
Info: [www.spsrhs.org](http://www.spsrhs.org).
- Sep 22-24** **Toledo, OH** - Penn Central Railroad Historical Society Convention  
Info: [www.pcrrhs.org](http://www.pcrrhs.org).
- Sep 23-24** **Hamburg, NY** - Erie Lackawanna Railroad Historical Society Symposium  
Info: <https://erielackhs.org>.
- Sep 24** **Albuquerque, NM** - New Mexico Steam Locomotive Open House  
Info: [www.2926.us](http://www.2926.us).
- Sep 29-Oct 1** **Independence, OH** - Nickel Plate Road Historical & Technical Society Convention.  
Info: [www.nkphts.org](http://www.nkphts.org).

## Send listings to: [transportsim@aol.com](mailto:transportsim@aol.com)

There is no charge for calendar listings. Train shows must include dealers of authentic railroad memorabilia or related material, and auctions must include at least 20 lots of railroadiana. Other events must be directly related to railroad history (special exhibitions, lecture programs, conventions, limited excursions, etc.). Regular monthly group meetings, model train meets & scheduled tourist train trips are not eligible, unless related to a special event. Events are listed space permitting, at the editor's discretion. Listings are subject to error or change. Always check show web sites before traveling.

## Visit [www.klnl.org](http://www.klnl.org) for More Listings

## Key Lock & Lantern Email Notifications

If you are not already receiving the link to this newsletter directly from KL&L, go to the "Contact KL&L" page on the Key Lock & Lantern website at [www.klnl.org](http://www.klnl.org) and sign up for our email list. You will receive links to the *KL&L News* when it is published and occasional notifications of events of interest to members. The email list is hosted by MailChimp, which makes it easy to unsubscribe at any time, and KL&L never sells or shares its email list with outside parties. Don't miss important news and announcements - sign up today!

## Want Ads for KL&L Members

As noted in previous issues, the "Want Ad" section of the *KL&L News* is undergoing an update to remove outdated notices. If you would like to submit an ad for inclusion in future issues, contact KL&L editor Dave Hamilton at [transportsim@aol.com](mailto:transportsim@aol.com). Basic want ads are free for current Key Lock & Lantern members.

## Member Address Changes & Corrections

The *Key Lock & Lantern* magazine is sent via First Class Mail and is therefore forwarded by the U.S. Postal Service for the designated period following an address change. However, due to the frequency of publication of the magazine, the time for forwarding may expire in between issues, and your magazine may be returned to KL&L. Please make sure that Key Lock & Lantern is on your list of organizations to notify in the event of a change of address. Also, please check your mailing label when receiving your copy of the magazine, and advise KL&L if any corrections are needed. Contact Marie Brainard at [j944wb@aol.com](mailto:j944wb@aol.com) if changes are required.

## The New York-Pennsylvania COLLECTOR Living with Antiques, Art & Americana

A Monthly Publication Featuring News & Articles About Antique Collecting & History



*Auction & Show Listings  
Club Meetings & Events  
Identification & Fakes  
Antique Restoration Tips  
Museums & Historic Sites  
Dealer & Flea Market Ads*

Subscription & Advertising Information:  
1-800-518-0875 [www.nypa-collector.com](http://www.nypa-collector.com)

# KEY LOCK & LANTERN

Can Help Promote Your  
**Auction, Show or Event**

With Advertising in KL&L Publications

**2300+ Facebook Followers**

**200+ Daily Website Visits**

**450+ Newsletter Subscribers**

Contact KL&L Editor Dave Hamilton at  
[transportsim@aol.com](mailto:transportsim@aol.com)



**All submissions for the KL&L magazine,  
news items for the digital KL&L News  
& general inquiries should be sent to:**

KL&L President & Editor  
David Hamilton  
E-mail: [transportsim@aol.com](mailto:transportsim@aol.com)

**Send membership applications, dues  
payments, and address changes to:**

KL&L Chairman John Brainard &  
VP-Membership Marie Brainard  
E-mail: [j944wb@aol.com](mailto:j944wb@aol.com)

Join or Renew Your  
**KEY LOCK & LANTERN**  
Membership Online at  
[www.klnl.org](http://www.klnl.org)

## KL&L Membership Form (2022-2023 Membership Year)

Please make check or money order payable to Key, Lock & Lantern, Inc. and forward to:  
Marie Brainard, KL&L Membership, 35 Nordhoff Place, Englewood, NJ 07631-4810

Name \_\_\_\_\_

Representing (business or museum, if applicable) \_\_\_\_\_

Address \_\_\_\_\_

City \_\_\_\_\_ State/Prov \_\_\_\_\_ Zip/Mail Code \_\_\_\_\_

Phone \_\_\_\_\_ E-mail \_\_\_\_\_

Basic membership at \$30 per year (1st Class mailing in USA) or \$40 per year (non-USA).....\$ \_\_\_\_\_

Contributing membership at \$35 per year, to help support KL&L (1st Class mailing in USA)..... \$ \_\_\_\_\_

Additional Donation.....\$ \_\_\_\_\_

Enclosed is my check / money order payable to Key Lock & Lantern, Inc. for.....\$ \_\_\_\_\_

Membership in KL&L includes 4 issues of the printed magazine, special member rates for KL&L Convention registration, and access to "members only" content on the KL&L website. New members joining before September will receive all previously published magazines for the year, and will be due for renewal in the following January. New members joining in September or later will have their dues applied to the next membership period, beginning with the Jan/Feb/Mar issue, unless otherwise requested.