



KEY LOCK & LANTERN NEWS

Sep/Oct 2022

Issue No.70



The Bi-Monthly Digital Supplement to Key Lock & Lantern Magazine



**Scenic Railroads
Expand Service**

**Railroad Museum &
Preservation News**

**Summer Railroad
Auction Results**



KEY LOCK & LANTERN NEWS

The Bi-Monthly Digital Supplement to Key Lock & Lantern Magazine
WWW.KLNL.ORG

October/November 2022 **Issue #70**

From the President's Desk	3
Railroad Event Calendar	3
Brookline Railroadiana Auction	4
Rail & Road Summer Auction	6
Nordic Auction Partners With JM Hobby	8
New Braunfels Museum Train Show	10
2022 Meridian Railfest	12
Adirondack Scenic Open to Tupper Lake	14
Saratoga Corinth & Hudson Railway	15
KL&L News & Information	29
KL&L Membership Form	30

KL&L News Editor.....David Hamilton

Send News to: transportsim@aol.com

The Key, Lock & Lantern News is published bi-monthly as a digital supplement to the quarterly Key, Lock & Lantern magazine. Recipients may repost or forward complete and unmodified copies of this newsletter to other hobbyists and websites, but its content may not otherwise be copied or distributed without the permission of the KL&L Board of Trustees. Copyrights are held by the respective authors and photographers. Excerpts of news items may be published with the credit line "Key, Lock & Lantern News"

Annual membership dues for Key, Lock & Lantern are \$30 for residents of the USA, and \$40 for outside of the USA (by money order or electronic payment in US funds). Members receive four issues of the quarterly KL&L magazine, delivered via first class mail. Memberships for additional family members are \$5 each (only one magazine is sent per family). Applications for membership & address changes should be forwarded to the VP-Membership at the e-mail address listed at right. Online membership forms and dues payment via Paypal are available at www.klnl.org.

Contributions of articles, photos, and news may be forwarded to the editor at the e-mail address listed at right. Hard copy articles should be written on 8 1/2 x 11" paper, and typed or neatly printed. Photos should be sent with a caption card attached which includes the contributor's name, phone number, and description. Photocopies of advertising and supply catalogs are acceptable. The submission of material in digital format is preferred, with text files in DOC, TXT, or PDF format, and images in JPG, TIF, BMP or GIF format. Digital files may be sent by e-mail or on a computer CD or flash drive. Please contact the editor regarding optimum file sizes and formats.

By submitting material to Key, Lock & Lantern, the contributor grants permission for use in any edition of the KL&L magazine, digital newsletter, websites, and other publications. All material will be retained by KL&L for future use, unless the contributor specifically requests that it be returned, and includes a suitable, self-addressed, stamped envelope. Current deadlines are listed in the Key, Lock & Lantern Advertising Guide, which is available on the KL&L website at www.klnl.org, or by contacting the editor.

Key, Lock & Lantern

A non-profit membership corporation dedicated to the preservation of transportation history and railroad memorabilia

The mission of Key, Lock & Lantern is to gather and publish information on the history of the transportation industry, and to support the preservation of railroad artifacts. KL&L members have an interest in all aspects of railroad & transportation history, from research and preservation projects to the conservation and restoration of all types of historical memorabilia. Originally formed in 1966, Key, Lock & Lantern, Inc. was officially incorporated in 1988 as a non-profit, educational, membership corporation in the State of New Jersey, under the provisions of Section 501(c)(3) of the United States Internal Revenue Code. Membership is open to anyone with an interest in transportation history and in achieving the goals of the organization.

Officers & Trustees

Chairman of the Board

John Brainard
j944wb@aol.com

President & Editor

David Hamilton
transportsim@aol.com

VP- Membership / Treasurer

Marie Brainard
j944wb@aol.com

Secretary / Counsel

Jeremy Tuke

Chaplain / Sgt at Arms

Chip Greiner

Historian

Peter Gores

Trustees at Large

Lyman Gray, Sam Lombardi, Joel Shaw, Sam Ferrara, Phil Simms, Leonard Gordy, Bob Lipman, Randy Bushart, William Sternitzke, Bill Roberts, Bob Myers, Joey Senese, Matthew Bushart, Michael Decker

www.klnl.org



For Current News
"Like" KL&L on

facebook

Watching Collections Change Hands

There have been a number of prominent railroad collections on the auction block this year, with more lined up for future sales. For those who have been in the hobby for a long time, witnessing the disposition of fellow collectors' memorabilia has probably become a routine occurrence, and it was never something that I thought too much about in the past.

However, in recent sales there have been many railroad artifacts that I have seen on display in KL&L members' homes and in KL&L Convention exhibits, or from other collections sold at prior auctions. While I am excited about the opportunity to add scarce railroadiana to my collection, it is a little sad to see collections broken up that often have taken decades to assemble.

Such is the nature of such a diverse subject of collecting, though. Some people focus on one aspect, such as acquiring fancy cast back locks from every railroad, while others look for all types of memorabilia from a specific line or region. Serious researchers attempt to gather every last document, book, or other source of information on their topic of interest, while others simply enjoy looking at a complete set of colored globe lanterns on their shelf.

Like many collectors, I have the pleasure (or perhaps curse) of falling into many of those categories. When my collection is dispersed one day, it will be of interest to everyone from researchers of railroad operations to lantern and timetable collectors. The oldest item in my collection is from the 1820's, and I have plenty of "stuff" from the 1980's as well. My collection is made up of a variety of memorabilia that is interesting to me, so it will probably make its way in many different directions when I am gone.

Watching the sale of these collections is a reminder that we are simply temporary caretakers of these tangible slices of the past. It has been nice to see many younger collectors at recent auctions and shows, and new middle-aged collectors who now have some disposable income for the higher end artifacts. There are still plenty of reports of "fresh from the barn" finds out in the wild, as well. It is satisfying to know that we are preserving memorabilia from our transportation history and passing it along to others who will appreciate it.

On the subject of finding people who are potential recruits for our preservation efforts, the holiday train show season is fast approaching. While it may be tempting to limit participation as a vendor to "sure thing" shows such as Gaithersburg, a table of memorabilia at a model train show is a great way to promote collecting. I usually only take in a couple hundred dollars at the local train shows, but always spark an interest in this aspect of the railroad hobby in a few people.

Of course, don't forget to keep the Key Lock & Lantern Convention on your calendar for May 11-14, 2023. More information about schedules and registration will be coming soon. As always, thanks to everyone for your ongoing support of KL&L!

Dave Hamilton

KL&L President & Editor

Railroad Event Calendar



Upcoming historical society conventions, special events, railroadiana shows & auctions. Listings subject to change. Check show web sites before traveling and visit www.klnl.org for updates. See submission guidelines at the end of the calendar.

Look for Advertisements in this Issue & on the Key Lock & Lantern Website for [Events Shown in Blue](http://www.klnl.org)

- Oct 1** **DeLand, FL** - Florida Rail Fair. Golden Spike Enterprises
Info: www.gserr.com.
- Oct 2** **Easton, PA** - Lehigh Valley Chapter National Railway Historical Society Train Show.
Info: www.lehighlines.org.
- Oct 6-7** **Palestine, TX** - Missouri Pacific Historical Society Convention.
Info: www.mopac.org.
- Oct 8-9** **Kirkwood, MO** - Greater St. Louis Metro Area Model Train Show.
Info: <http://seetrains.com>.
- Oct 8** **Terryville, CT** - Lock Museum of America Annual Lock Show.
Info: www.lockmuseumofamerica.org.
- Oct 14-15** **Brookline, NH** - Railroadiana Consignment Auction. Brookline Auction Gallery.
Info: www.tagtown.net.
- Oct 15-16** **Colorado Springs, CO** - Train Expo Colorado. TECO/PRMA.
Info: www.tecoshow.org.
- Oct 16** **Amsterdam, NY** - Rails Along the Mohawk Train Show
Info: www.ahts.org.

Continued on Page 29

Front Cover: The Saratoga, Corinth & Hudson Railway excursion train prepares to depart from Corinth, NY Photo by Dave Hamilton.

Brookline Continues Sale of Top Notch Collections from New York & New England

The Brookline Auction Gallery dove into the railroading market with the sale of the John Knowles collection over a decade ago, and has continued to conduct semi-annual sales of railroad memorabilia ever since. With long time collector Scott Czaja serving as sales manager, Brookline has become known for its accurate and honest catalog descriptions, which have allowed online bidding to surpass in-house participation in recent years. Several prominent collections are currently being offered, and regular bidders will no doubt recognize some of the lots in the current sales. The spring 2022 auction saw high bids on many scarce items, and more are lined up for the October sale. *Photos and prices realized courtesy of Brookline Auction Gallery and do not include buyers premiums and shipping.*



A Buffalo Rochester & Pittsburgh Railway Fire Department badge from Rochester, NY sold for a \$525 high bid.



A \$3500 bid was needed to buy this Lehigh & Hudson River Railway Dietz No. 6 lantern with red flashed globe.



A \$550 bid was needed to purchase this large steel Central Vermont logo sign with some wear.



A New York West Shore & Buffalo Railway lock by Romer of Newark, NJ went to a new home for a high bid of \$500.

Continued on Page 16

Railroadiana Auctions - Spring & Fall - Brookline, NH

Railroadiana Consignment Auctions Held Each Spring & Fall

Brookline Auction Gallery LLC - 32 Proctor Hill Rd, Brookline, NH 03033

Auction information including photos: www.tagtown.net

Scott Czaja - Sales Manager (978) 779-2904

Next Sale: October 14-15, 2022



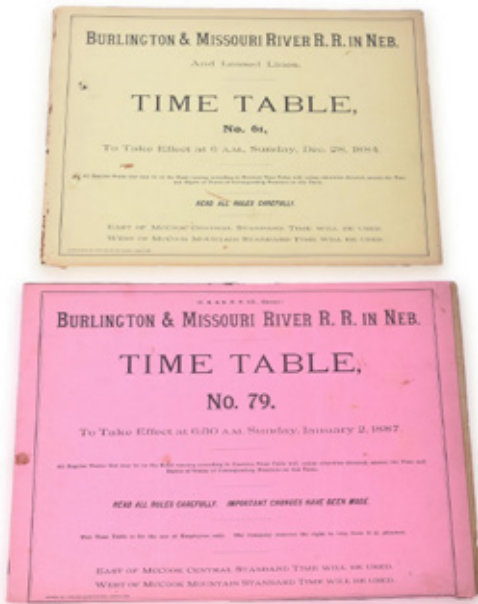
Featuring the Phil Simms & Other Northeastern Collections



Now on **LiveAuctioneers.com** - We also accept absentee bids via: e-mail & mail
Quality consignments are welcome for future sales - call Scott or email: sczaja@hotmail.com

Additional Installments of Large Midwest Collections Offered in Rail & Road Auction

The summer Rail & Road Auction featured additional installments of the sale of several large and notable midwest collections, with a variety of memorabilia for every budget. Items from the Brian Maiher and Charles Stats collections will continue to be offered in upcoming sales, with a fall auction added to the lineup in October, due to the large size of the collections. *Photos and prices realized courtesy of Rail & Road Auctions and do not include buyers premiums and shipping.*



A pair of Burlington & Missouri River Railroad in Nebraska employee timetables from 1884 & 1887 sold for \$150.



A high bid of \$350 was needed to take home this 14" square metal "Track 3" railroad station platform sign.



A \$1250 bid took home this 60" Great Seal of the United States from a Santa Fe Bicentennial SD45-2 diesel.



A Leslie Tyfon A200-LP bronze locomotive horn marked "5569" went to a new owner for a high bid of \$575.



A \$550 bid purchased a lot of 11 New York Central holiday menus featuring the Empire State Express and others.

Continued on Page 20

Rail & Road Auctions

Fall Online Auction - October 20-21, 2022



Featuring the Brian Maiher & Charles Stats Collections



www.BIDRAR.com

765-588-3400

Bid Live Online, Phone or Absentee

**LOCAL
AURORA-BATAVIA
EXPRESS
ELGIN ST. CHARLES
GENEVA
WHEATON
EXPRESS
CHICAGO
EXTRA
SPECIAL
PRIVATE**

Nordic Auction Partners With JM Hobby Supply to Hold Railroadiana Auctions

Nordic Auction of Duluth, MN has been in the business for over 70 years, offering a variety of auction services from estate to property sales. The company has recently partnered with JM Hobby Supply, a long-time dealer of model railroad supplies and railroad memorabilia, to hold regular railroadiana auctions. The spring 2022 sale included many artifacts from regional lines, plus a variety of memorabilia from other parts of the country as well. The fall auction, scheduled for late October, will continue with additional items from the same collections, along with other consignments. *Photos and prices realized courtesy of Nordic Auction and do not include buyers premiums and shipping.*



A \$220 high bid took home this Frisco System Handlan bellbottom lantern with matching etched logo globe.



A Great Northern step box made by Morton Manufacturing of Chicago went to a new owner for a \$525 bid.



A Chicago Rock Island & Pacific RR "Private Detective" police badge sold for a high bid of \$210.



A \$450 bid took home this brass diesel locomotive bell from the Duluth Missabe & Iron Range Railroad.

Continued on Page 24

JM HOBBY SUPPLY & RAILROAD ARTIFACTS and NORDIC AUCTION

Presents Our Fall 2022 Railroadiana Auction

Friday, October 21st & Saturday, October 22nd

Nordic Auction Events Center, 2713 Courtland St., Duluth, MN 55806

Preview on October 19th & 20th at the Events Center

Bidding available in-person at the Nordic Auction Events Center, or live, online, via LiveAuctioneers! This auction will also be broadcast live so you can watch the action and hear item details as the items come up for bid! Our last auction had online bidders from 45 countries! Watch for auction postings at:

www.nordicauction.com, www.jmhobbysupply.com & www.liveauctioneers.com



Auction Highlights:

Large collection of keys and locks, stock certificates from the St. Paul and Duluth RR, Duluth Street Railway specimen bond (one of two known), and others, rare lanterns including D&IR cast, Columbus Railway & Light marker lamps (only known matched pair), Great Northern loco decal, Union Pacific depot clocks, railroad cap, uniform and badge collection including Seaboard, Erie, New Haven, rare railroad photo books from 1900-1940s, railroad signs, timetables, blueprints, photos, and ephemera ...and much more!

Now taking consignments for our Spring & Fall 2023 auctions! We offer the lowest buyers & sellers fees of any major national railroad auction service! Call us at 920-857-9670 or 218-590-3032 for information.

New Braunfels Railroad Museum's Fall Train Show to Include Vendors, Layouts & More

The New Braunfels Railroad Museum is the caretaker of the former International & Great Northern Railroad station in New Braunfels, TX. Built in 1907, the depot was last used by the railroad in 1986, and the building was leased to the museum organization shortly thereafter. Following extensive renovations, the station now houses exhibits about the railroad history of the region.

Work by museum members in 2007 added custom made cases and lighting, to allow for the display of artifacts that had previously been in storage. Exhibits include a 19-century velocipede, baggage carts, a telegraphy system, and a history



Civic Center. Over 60 vendors from the region typically fill several hundred tables of merchandise, ranging from model trains to books and memorabilia. There are model train layouts for the kids, Lego trains, and door prizes. A mini food court offers snacks, drinks, and lunch.

For more information about the train show, and the New Braunfels Railroad Museum, look for them on Facebook and visit <http://newbraunfelsrailroadmuseum.org/nbrr/>. *News and photos from the New Braunfels Railroad Museum.*



of the development of standard time. A variety of lanterns, timetables, passes, uniforms, tools, and other memorabilia round out the displays.

Rolling stock at the museum includes an 0-6-0T steam locomotive built in 1907 by H.K. Porter, a Missouri Pacific boxcar, and a 1950 caboose built in the Missouri Pacific Sedalia, MO shops. The most recent addition to the museum collection is a 1922 Pullman coach that was once used on the Illinois Central Railroad. Converted to a table car for use in tourist train service, the car is now available for use by groups and private parties at the museum.

The museum sponsors spring and fall trains shows, to raise funds for its activities and to introduce railroading to the community. The fall New Braunfels Train Show is scheduled for the weekend of October 22-23, at the New Braunfels



Railroad Museums & Historical Societies
Send in news & photos to
KEY LOCK & LANTERN

Railroad Memories

AUCTION CATALOG #114

Bids Begin Closing Sunday November 13, 2022 at 8pm MT



LOT 25



LOT 28



LOT 129



LOT 313



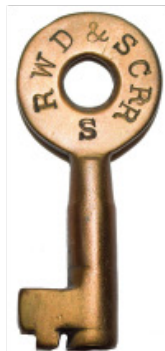
LOT 347



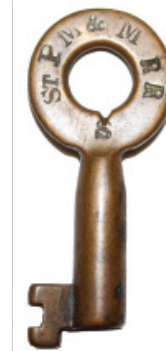
LOT 374



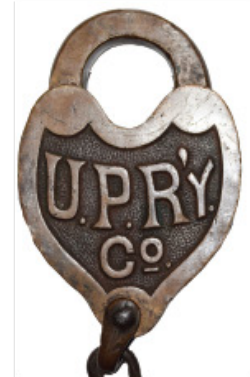
LOT 425



LOT 334



LOT 344



LOT 428



LOT 136



LOT 178



LOT 105

P.O. Box 415; Georgetown, CO 80444
303-569-5185 fax 303-569-5186

Email: railroadmemories@gmail.com website: www.railroadmemories.com

Meridian Railroad Museum to Host Annual Railfest With Exhibits, Programs & Vendors

Each year, the Meridian Railroad Museum in the Meridian, Mississippi station sponsors a Railfest to celebrate the transportation history of the community. This year's event is scheduled to take place on November 5th, at the museum on Front Street in Meridian. A variety of activities for the entire family are planned to take place throughout the day.

There will be displays of railroad equipment, model railroad and antique vendors, and a kids area with hands-on model trains and rides. The museum gift shop will also be open, with books and souvenirs for sale.

Several groups are scheduled to perform live music for the entertainment of visitors during the day, including the Norfolk Southern Lawmen group. The "Moving America" podcast will also be broadcast live from the event. For additional information and event schedules, visit the Railfest website at www.meridianmsrailfest.com. *News and photos from the Meridian Railroad Museum.*



KEY LOCK & LANTERN

Can Help Promote Your
Auction, Show or Event

Contact KL&L at transportsim@aol.com



Dirk Soulis Auctions

www.soulisauctions.com

Lanterns Sold in Recent Auctions



AT&SF A&W w/ Red
Cast Globe - \$18,000



UPRW A&W w/ Green
Cast Globe - \$15,000



Union Pacific w/ Red
Cast Globe - \$7,000



B&M in Neb w/ Clear Cast
Globe - \$9,000



Union Pacific w/ Blue
Cast Globe - \$42,000



RGW Ry w/ Clear Cast
Globe - \$13,000



UPRR w/ Red
Cast Globe - \$13,000



D&RGRR Buck w/ Red
Cast Globe - \$13,000

In Person, Absentee, Phone & Internet Bidding.
Visit www.soulisauctions.com for information about upcoming sales



Located just outside of KANSAS CITY, MISSOURI
529 W. Lone Jack Lees Summit Road, Lone Jack, MO 64070
SoulisAuctions.com 816-697-3830

Adirondack Railroad to Operate Inaugural Train On Restored Line to Tupper Lake Junction

When the Key Lock & Lantern Convention was held in Utica, NY, attendees enjoyed several different trips on the Adirondack Railroad. Our last excursion operated over the entire in-service portion of the line to Big Moose (at the time, the Lake Placid to Saranac Lake section was also in service, but an isolated operation), with a large section of the state-owned railroad still in need of rehabilitation.

The story of the railroad has had its ups and downs since then, with snowmobile clubs backed by anti-railroad factions lobbying the state to turn the line into a recreational trail. Our last report in KL&L News #49 covered the final departure of the train from Lake Placid, after New York State discontinued its operating agreement with the railroad on that segment in 2017.



However, the track work needed to restore train service between Big Moose and Tupper Lake Junction began in 2020, and trains started running to Beaver River during the summer of 2022. Many thousands of ties and tons of ballast later, the Adirondack Railroad is poised to operate trains over the entire remaining line between Utica and Tupper Lake Junction.

New equipment, including a dome car, was purchased for the expanded route, and a test run with railroad and state officials operated to Tupper Lake in September. An inaugural revenue train is scheduled for Sunday, October 16th, with an all day round trip from Utica. Schedule and ticket information is available at <https://adirondackrr.com>. All aboard for the first public train ride over this line since the Adirondack Railway's Olympic train last ran in 1981!



A court victory by the railroad to preserve the line was short lived when Governor Cuomo (who later resigned after being accused of sexual harassment) simply changed the law to allow for the northern portion of the route to be converted into a trail. The rails on the Lake Placid to Tupper Lake Junction segment were removed, and the state's commitment to its compromise plan to rehabilitate the remainder of the line was viewed with some degree of skepticism.



Saratoga, Corinth & Hudson Railway Adds Pullman Car Service for Fall Foliage Season

On the eastern edge of New York's Adirondack Park, there is a railroad line that predates the former New York Central route that is the subject of the article on the previous page. The Adirondack Railway was constructed in the 1860's between Saratoga Springs and North Creek, NY. Originally part of a larger plan for a route across the Adirondacks to Lake Ontario, North Creek remained the terminus of the line until an extension to nearby ore mines was constructed during World War II.

The Adirondack Railway eventually came under the control of the Delaware & Hudson, which operated it as a branch line until the ore mine and later a major paper mill customer closed. After the line was purchased by the counties through which it ran, tourist trains operated by the Upper Hudson River Railroad began running from North Creek in the late



1990's. The Saratoga & North Creek Railroad took over the line in 2011, offering an extensive array of passenger trains, that connected with regional Amtrak service, but financial problems brought an end to the company in 2018.

Just as with the Adirondack Railroad to the west, pressure was put on the local government owners of the line to tear up the rails and convert it to a trail. Fortunately, those efforts have thus far been unsuccessful, and a new operator began running trains between Corinth and Saratoga earlier this year.

The Saratoga, Corinth & Hudson Railway acquired Alco switcher No. 5, which had been used by the S&NC, along with a coach, table car, and open air car. All throughout the summer, the little SC&H train carried passengers between Corinth and the outskirts of Saratoga Springs at Greenfield Center, NY. The ride proved to be a popular attraction for



tourists in the region, and the railroad's volunteer staff worked tirelessly to continue ongoing restoration work on the rolling stock.

This hard work paid off at the end of September, when the railroad's 1916 office car was returned to service, just in time for fall foliage season. Now named the "Kayadeross," this heavyweight Pullman once carried railroad executives on the Illinois Central Railroad. Passengers are now able to enjoy the scenery from the rear platform and observation lounge, and future restoration work will open the dining and staterooms for use.

Fall foliage and special event trains continue through the end of October, when the train will be reconfigured for the holiday "Candy Cane Express." Information about schedules and tickets is available at <https://corinthtrain.com>. Thanks to the efforts of its staff and volunteers, the Saratoga, Corinth & Hudson Railway is another railroad preservation success story.





Switch keys from the Central Iowa RR (\$650), West Shore (\$350), and Chicago St Paul & Minneapolis RY (\$600).



A \$3900 bid bought this FO Dewey brass top bellbottom lantern from the New York Ontario & Western Railway.



This P&R lock, also stamped PR&NE on the shackle for the Philadelphia Reading & New England, sold for \$350.



This New York Ontario & Western brass heart lock by Romer with NYO&W RR key sold for a high bid of \$750

Continued on Page 17

KEY LOCK & LANTERN

Can Help Promote Your
Auction, Show or Event

Contact KL&L at transportsim@aol.com



A \$300 bought this Buffalo Rochester & Pittsburgh Railway Parlor Car badge with the "Safety & Service" logo.



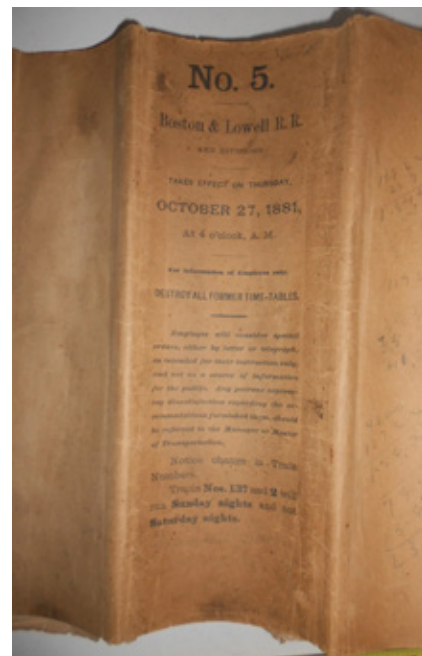
An NYO&W Ry pebble finish lock by Climax with working NYO&W Ry key went to a new home for a \$400 bid.



A cat's eyes reflector "Stop On Red Signal" railroad crossing sign sold for a high bid of \$325.



A Dietz Vesta marked for the New York Central Marine Department with red cast globe sold for a \$525 bid.



A \$275 bid was needed to take home this Boston & Lowell Railroad employee timetable from October, 1881.

Continued on Page 18



A Central New England lock by Thomas Slaight with matching CNE RR key went home for an \$800 bid.



A \$750 bid took home this New York Central Stock Yards Dietz No.6 bellbottom lantern with red cast globe.



A \$475 bid was needed to buy this Dietz Vesta from the New York Susquehanna & Western (NYS&W).



A Walkill Valley Railroad brass heart lock by T. Slaight of Newark, NJ went to a new owner for a \$425 bid.



This 1944 Pennsylvania Railroad calendar with World War II theme and J1 locomotive sold for a \$475 high bid.

Continued on Page 19



A \$575 bid was needed to buy this Erie Railroad 6-lever brass pancake lock with working unmarked key.



A \$3500 bid took home this Lehigh & Hudson River Armspear lantern with etched "safety first" globe.



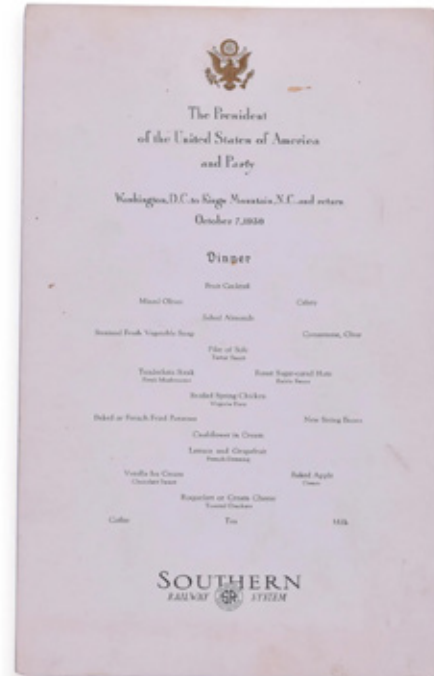
A Delaware Lackawanna & Western RR lantern by Steam Gauge & Lantern with DL&W cast globe sold for \$1000.



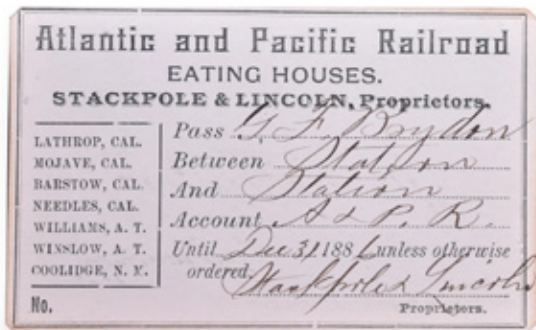
A Pennsylvania Coal Company lock by Thomas Slaight with working unmarked key sold for a high bid of \$700.



A \$325 bid was needed to purchase this General Railway Signal semaphore blade from the Chicago & Northwestern.



A Southern Railway menu from a 1930 trip by President Herbert Hoover went to a new home for a \$575 bid.



An unusual Atlantic & Pacific Railroad eating house pass issued by Stackpole & Lincoln sold for a \$475 bid.



An \$850 high bid bought this Mars diesel locomotive headlight believed to be from the Burlington Route.



A \$200 bid purchased this Omnigraph morse code training transmitter with original board and label.



An unusual 48" Flexi-Van sign by Kux Manufacturing went to a new home for a high bid of \$775.

Continued on Page 21



A 14 1/2" diameter brass steam locomotive bell with a Trans Devices ringer sold for a high bid of \$700.



A \$475 high bid bid purchased this 36" square aluminum sign from the Burlington Northern Railroad.



A high bid of \$350 took home this 1886 California Southern Railroad annual pass issued to an A&P passenger agent.



A group of Chicago Burlington & Quincy employee timetables from the 1908-1913 era sold for \$130.



A group of New York Central menus with 20th Century Limited and World's Fair covers sold for \$425.



A high bid of \$550 took home this lot of Lake Shore & Michigan Southern and Boston & Albany menus.

Continued on Page 22



A 36" Railway Express Agency porcelain sign with some chipping and rust still brought a \$450 high bid.



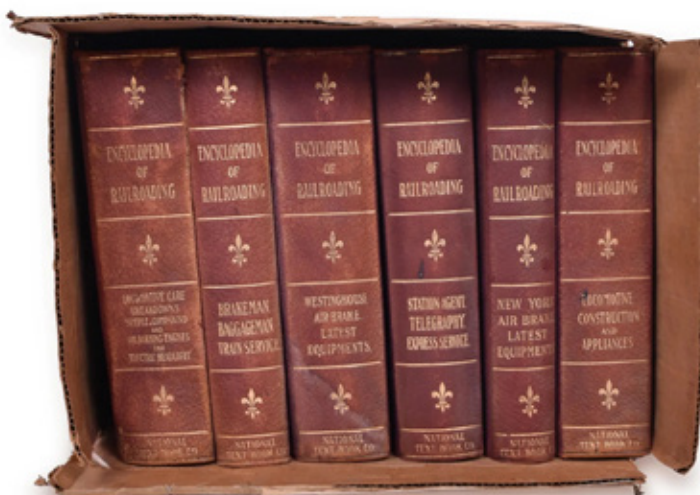
A pair of St. Louis, Keokuk & Northwestern / Chicago Burlington & Quincy joint timetables sold for a \$525 bid.



A \$650 bid took home this Quincy Omaha & Kansas City Railway 1892 pass issued to a Pacific Express employee.



A \$325 bid purchased this General Motors Electro-Motive Division diesel locomotive throttle & reverser panel.



A six volume set of the Encyclopedia of Railroading by the National Text Book Company sold for a \$225 bid.

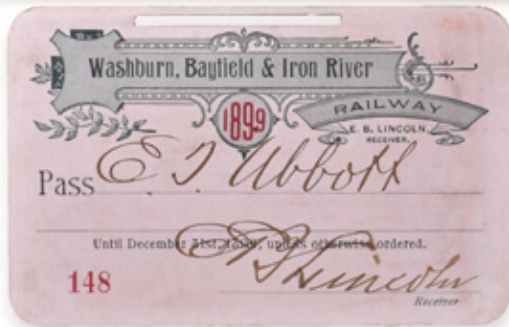
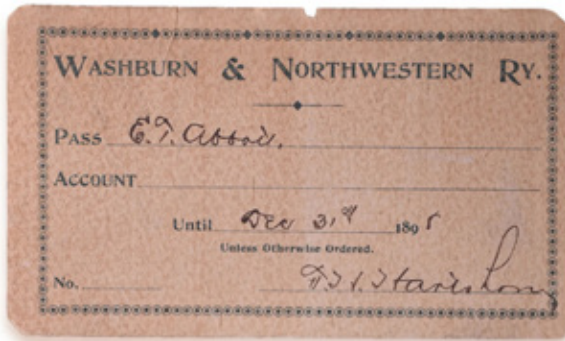


A lot of three Norfolk & Western and Southern Railway dining car menus went to a new home for a \$225 bid.

Continued on Page 23



A 71x13" wooden Adams Express Company sign with minor wear went to a new owner for a high bid of \$700.



A \$400 bid bought this pair of Washburn Bayfield & Iron River and Washburn & Northwestern Railway passes.



A \$250 bid was needed to buy this 58x48" sign from the Burlington Route with minor wear and scratches.



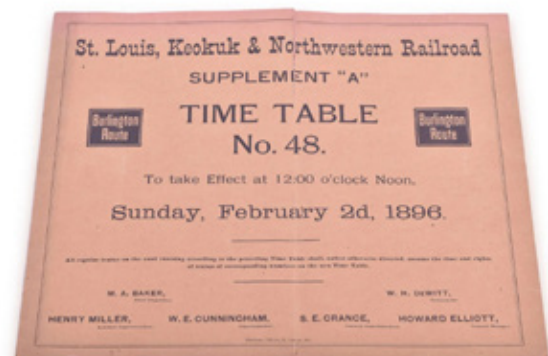
An 1891 Keokuk & Western Railroad Company annual pass with an excellent vignette sold for a high bid of \$475.



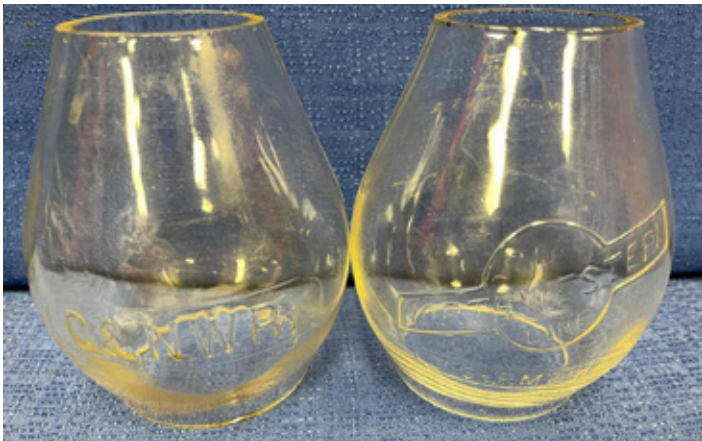
A \$475 high bid was needed to take home this 3-segment 80" Railway Express Agency porcelain sign.



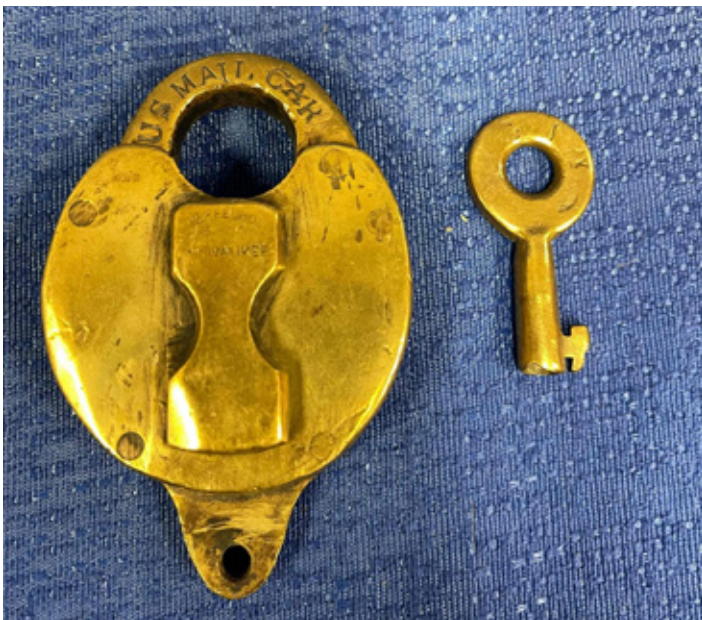
A Railway Express Agency trunk filled with agent's paperwork and paraphernalia sold for a \$475 bid.



An 1896 St. Louis, Keokuk & Northwestern Railroad employee timetable supplement sold for a \$300 bid.



A \$220 bid took home this pair of Chicago & Northwestern Railway clear cast globes, one with the C&NW logo.



A Great Northern Ry "U.S. Mail Car" lock and key by Loeffelholz of Milwaukee sold for a \$550 high bid.



A \$200 high bid took home this framed Baldwin builders photo of Northern Pacific locomotive No. 2651.



A Cincinnati Hamilton & Dayton RR Adams & Westlake brass top lantern with reproduction globe sold for \$375.



A \$325 bid was needed to purchase this metal "Danger No Trespassing - Safety First" sign with some damage.



A Duluth Missabe & Iron Range Nathan P5 "President's Whistle" locomotive horn sold for a high bid of \$2200.

Continued on Page 25



A Duluth Missabe & Iron Range Railway "Special Officer" railroad police badge brought a high bid of \$160.



An \$800 bid purchased this Chicago & Northwestern aluminum sign from the Green Bay, Wisconsin station.



A \$250 high bid took home this Ashcroft locomotive steam gauge with an April 12, 1895 register date.



A St. Paul & Duluth Railroad brass lock by Union Brass Manufacturing of Chicago sold for a \$1400 high bid.

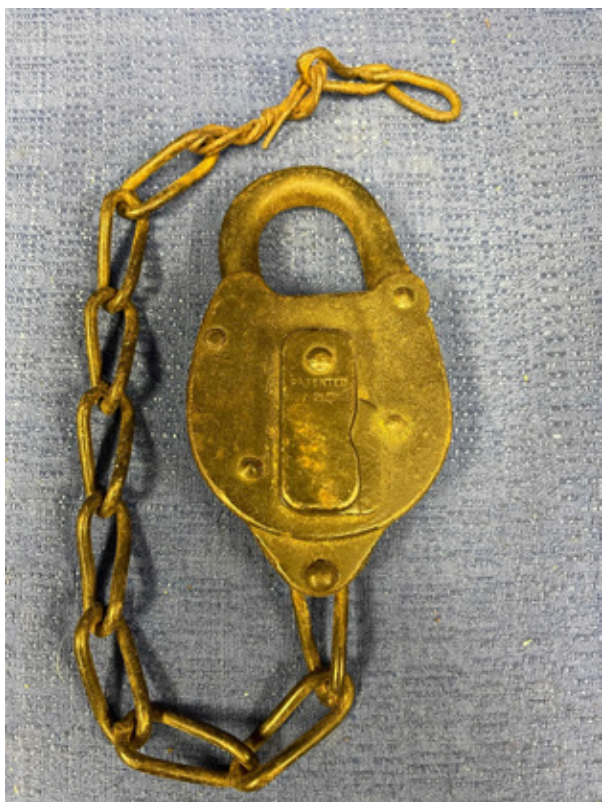


A Duluth Missabe & Northern lock and key with "International - M. Klodniski" tag sold for a \$290 bid.



A \$300 high bid was needed to take home this nicely restored and complete Adlake switch lamp.

Continued on Page 26



A brass lock from the Duluth & Iron Range Railroad went to a new owner for a high bid of \$375.



A \$110 bid was needed to take home this scarce Duluth Huron & Denver Railroad \$1000 bond certificate.



A Milwaukee Road porcelain caboose herald in good condition went to a new home for a \$500 high bid.

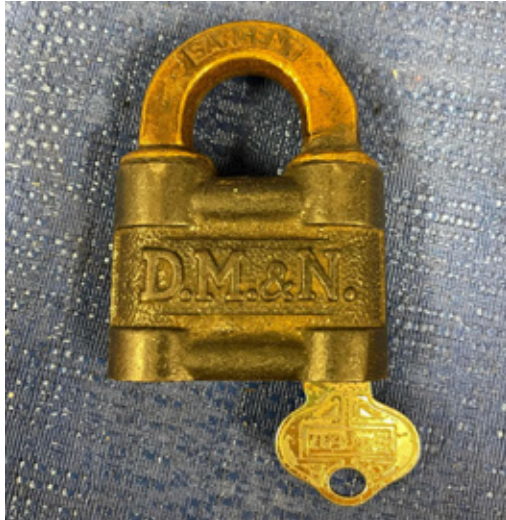


A \$600 high bid purchased this brass steam whistle.



A brass luggage rack that was reportedly from a Pullman car generated some interest, selling for a \$450 bid.

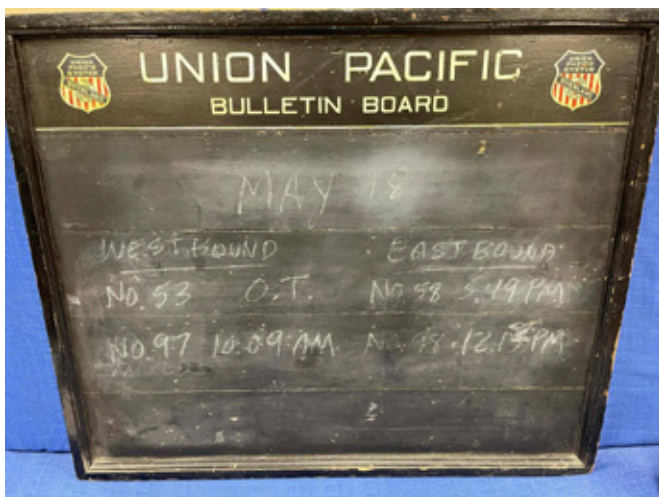
Continued on Page 26



A Duluth Missabe & Northern Railway lock (cast on both sides) by Sargeant with working key sold for \$260.



A \$450 high bid was needed to take home this baggage wagon with Great Northern brass badge.



A Union Pacific Overland Route logo bulletin board went to a new owner for a high bid of \$375.



A Duluth Missabe & Northern Railway A&W lantern with wooden handle and unmarked amber globe sold for \$170.

KEY LOCK & LANTERN

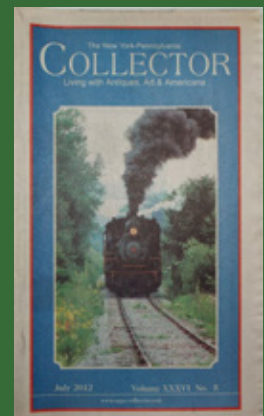
Can Help Promote Your
Auction, Show or Event
2300+ Facebook Followers
200+ Daily Website Visits
450+ Newsletter Subscribers

Contact KL&L Editor Dave Hamilton at
transportsim@aol.com

The New York-Pennsylvania COLLECTOR

Living with Antiques, Art & Americana

A Monthly Publication Featuring News & Articles
About Antique Collecting & History



- *Auction & Show Listings*
- *Club Meetings & Events*
- *Identification & Fakes*
- *Antique Restoration Tips*
- *Museums & Historic Sites*
- *Dealer & Flea Market Ads*

Online Event Calendar
Online Show & Dealer Ads
Subscriptions
Advertising Information

www.nypa-collector.com

NYPA-Collector

Railroad Event Calendar

Continued from Page 2

Oct 16 Batavia, NY - Fall Great Batavia Train Show. Genesee Model Engineers.
Info: www.gsme.org.

Oct 16 St Charles, IL - Chicagoland Railroadiana Show - Kane County Fairgrounds
Info: www.rrshows.com.

Oct 20-21 Lafayette, IN - Rail & Road Auctions Railroadiana Auction.
Info: <https://rarauctions.com>

Oct 21-22 Duluth, MN - Nordic Auction & JM Hobby Supply Railroadiana Auction.
Info: <http://www.nordicauction.com>.

Oct 22-23 New Braunfels, TX - New Braunfels Railroad Museum Train Show.
Info: www.nbrm.org.

Oct 22-23 Normal, IL - GM&O Historical Society Meeting & Train Show.
Info: www.gmo.org.

Oct 23 Griffith, IN - Blackhawk Chapter NRHS Swap Meet Railroadiana Show.
Info: www.blackhawknrhs.org.

Oct 23 Kingston, NY - Railroad Hobby Show. Murphy Midtown Center.
Info: www.kingstontrainshow.com.

Oct 29 Indianapolis, IN - Indianapolis Railroadiana Show.
Info: www.indyrrshow.com.

Oct 30 Poughkeepsie, NY - Hudson Valley Railroad Society Train Show.
Info: www.hydeparkstation.com.

Nov 5 Meridian, MS - Meridian Railfest at the Meridian Railroad Museum.
Info: www.meridianmsrailfest.com.

Nov 5 St. Cloud, MN - Granite City Train Show. National Guard Armory.
Info: www.granitecitytrainshow.com.

Nov 5-6 Syracuse, NY - Great NYS Model Train Fair. New York State Fairgrounds.
Info: www.modeltrainfair.com.

Nov 6 Gaithersburg, MD - Railroadiana Show & Sale. Golden Spike Enterprises.
Info: www.gserr.com.

Nov 11-12 Allentown, PA - First Frost Train Show. Allentown Fairgrounds.
Info: www.allentowntrainmeet.com.

Nov 13 Lansing, MI - Lansing Train Show Michigan State University Pavilion.
Info: www.lmrc.org.

Nov 19 Ft Wayne, IN - Maumee Valley Railroad Club Model Railroad Show & Swap Meet..
Info: <http://maumeevalleyrailroad.com>.

Nov 26 Boonsboro, MD - Hagerstown Model RR Museum Train Sale.
Info: www.antietamstation.com.

Nov 26-27 Buffalo, NY - Greater Buffalo Train Show. Erie County Fairgrounds Event Center.
Info: www.wnyrhs.org.

Nov 26 Joplin, MO - Joplin Museum Train Show. Joplin Museum Complex.
Info: www.tristatamodelrailroaders.com.

Dec 3-4 Marlborough, MA - New England Model Train Expo. NMRA Hub Division.
Info: www.hubdiv.org.

Dec 4 Albany, NY - Great Train Extravaganza. "The Egg" at the Empire State Plaza.
Info: www.gtealbany.com.

Dec 10 Columbus, OH - Buckeye Railroadiana Show. Golden Spike Enterprises.
Info: www.gserr.com.

Dec 10-11 Rochester, NY - RIT Tiger Tracks Train Show RIT Gordon Field House.
Info: <http://ritmrc.org>.

Send listings to: transportsim@aol.com

There is no charge for calendar listings. Train shows must include dealers of authentic railroad memorabilia or related material, and auctions must include at least 20 lots of railroadiana. Other events must be directly related to railroad history (special exhibitions, lecture programs, conventions, limited excursions, etc.). Regular monthly group meetings, model train meets & scheduled tourist train trips are not eligible, unless related to a special event. Events are listed space permitting, at the editor's discretion. Listings are subject to error or change. Always check show web sites before traveling.

Visit www.klnl.org for More Listings

Key Lock & Lantern Email Notifications

If you are not already receiving the link to this newsletter directly from KL&L, go to the "Contact KL&L" page on the Key Lock & Lantern website at www.klnl.org and sign up for our email list. You will receive links to the *KL&L News* when it is published and occasional notifications of events of interest to members. The email list is hosted by MailChimp, which makes it easy to unsubscribe at any time, and KL&L never sells or shares its email list with outside parties. Don't miss important news and announcements - sign up today!

Want Ads for KL&L Members

As noted in previous issues, the "Want Ad" section of the *KL&L News* is undergoing an update to remove outdated notices. If you would like to submit an ad for inclusion in future issues, contact KL&L editor Dave Hamilton at transportsim@aol.com. Basic want ads are free for current Key Lock & Lantern members.

Member Address Changes & Corrections

The *Key Lock & Lantern* magazine is sent via First Class Mail and is therefore forwarded by the U.S. Postal Service for the designated period following an address change. However, due to the frequency of publication of the magazine, the time for forwarding may expire in between issues, and your magazine may be returned to KL&L. Please make sure that Key Lock & Lantern is on your list of organizations to notify in the event of a change of address. Also, please check your mailing label when receiving your copy of the magazine, and advise KL&L if any corrections are needed. Contact Marie Brainard at j944wb@aol.com if changes are required.

Visit www.klnl.org for More Listings

KEY LOCK & LANTERN

Can Help Promote Your
Auction, Show or Event

With Advertising in KL&L Publications

2300+ Facebook Followers

200+ Daily Website Visits

450+ Newsletter Subscribers

Contact KL&L Editor Dave Hamilton at
transportsim@aol.com



**All submissions for the KL&L magazine,
news items for the digital KL&L News
& general inquiries should be sent to:**

KL&L President & Editor
David Hamilton
E-mail: transportsim@aol.com

**Send membership applications, dues
payments, and address changes to:**

KL&L Chairman John Brainard &
VP-Membership Marie Brainard
E-mail: j944wb@aol.com

Join or Renew Your
KEY LOCK & LANTERN
Membership Online at
www.klnl.org

KL&L Membership Form (2022-2023 Membership Year)

Please make check or money order payable to Key, Lock & Lantern, Inc. and forward to:
Marie Brainard, KL&L Membership, 35 Nordhoff Place, Englewood, NJ 07631-4810

Name _____

Representing (business or museum, if applicable) _____

Address _____

City _____ State/Prov _____ Zip/Mail Code _____

Phone _____ E-mail _____

Basic membership at \$30 per year (1st Class mailing in USA) or \$40 per year (non-USA).....\$ _____

Contributing membership at \$35 per year, to help support KL&L (1st Class mailing in USA)..... \$ _____

Additional Donation.....\$ _____

Enclosed is my check / money order payable to Key Lock & Lantern, Inc. for.....\$ _____

Membership in KL&L includes 4 issues of the printed magazine, special member rates for KL&L Convention registration, and access to "members only" content on the KL&L website. New members joining before September will receive all previously published magazines for the year, and will be due for renewal in the following January. New members joining in September or later will have their dues applied to the next membership period, beginning with the Jan/Feb/Mar issue, unless otherwise requested.