



KEY LOCK & LANTERN NEWS



Jan/Feb 2023

Issue No.72

The Bi-Monthly Digital Supplement to Key Lock & Lantern Magazine



**2022 Gaithersburg
Show Report**

**Railroad Museum &
Preservation News**

**Fall Railroadiana
Auction Results**



KEY LOCK & LANTERN NEWS



The Bi-Monthly Digital Supplement to Key Lock & Lantern Magazine
WWW.KLNL.ORG

January/February 2023 Issue #72

From the President's Desk	3
Railroad Event Calendar.....	3
2022 Gaithersburg Show Report.....	4
Railroad Memories Auction.....	6
Lake Superior Railroad Museum Winter Events.....	8
Rail & Road Auction.....	10
National Transportation Museum Swap Meet.....	12
2023 KL&L Convention Update.....	14
Stay In Touch With KL&L Online.....	15
WNYRHS Buffalo Train Show.....	16
Southern California Railroad Swap Meet.....	17
KL&L News & Information.....	31

KL&L News Editor.....David Hamilton

Send News to: transportsim@aol.com

The Key, Lock & Lantern News is published bi-monthly as a digital supplement to the quarterly Key, Lock & Lantern magazine. Recipients may repost or forward complete and unmodified copies of this newsletter to other hobbyists and websites, but its content may not otherwise be copied or distributed without the permission of the KL&L Board of Trustees. Copyrights are held by the respective authors and photographers. Excerpts of news items may be published with the credit line "Key, Lock & Lantern News"

Annual membership dues for Key, Lock & Lantern are \$30 for residents of the USA, and \$40 for outside of the USA (by money order or electronic payment in US funds). Members receive four issues of the quarterly KL&L magazine, delivered via first class mail. Memberships for additional family members are \$5 each (only one magazine is sent per family). Applications for membership & address changes should be forwarded to the VP-Membership at the e-mail address listed at right. Online membership forms and dues payment via Paypal are available at www.klnl.org.

Contributions of articles, photos, and news may be forwarded to the editor at the e-mail address listed at right. Hard copy articles should be written on 8 1/2 x 11" paper, and typed or neatly printed. Photos should be sent with a caption card attached which includes the contributor's name, phone number, and description. Photocopies of advertising and supply catalogs are acceptable. The submission of material in digital format is preferred, with text files in DOC, TXT, or PDF format, and images in JPG, TIF, BMP or GIF format. Digital files may be sent by e-mail or on a computer CD or flash drive. Please contact the editor regarding optimum file sizes and formats.

By submitting material to Key, Lock & Lantern, the contributor grants permission for use in any edition of the KL&L magazine, digital newsletter, websites, and other publications. All material will be retained by KL&L for future use, unless the contributor specifically requests that it be returned, and includes a suitable, self-addressed, stamped envelope. Current deadlines are listed in the Key, Lock & Lantern Advertising Guide, which is available on the KL&L website at www.klnl.org, or by contacting the editor.

Key, Lock & Lantern

A non-profit membership corporation dedicated to the preservation of transportation history and railroad memorabilia

The mission of Key, Lock & Lantern is to gather and publish information on the history of the transportation industry, and to support the preservation of railroad artifacts. KL&L members have an interest in all aspects of railroad & transportation history, from research and preservation projects to the conservation and restoration of all types of historical memorabilia. Originally formed in 1966, Key, Lock & Lantern, Inc. was officially incorporated in 1988 as a non-profit, educational, membership corporation in the State of New Jersey, under the provisions of Section 501(c)(3) of the United States Internal Revenue Code. Membership is open to anyone with an interest in transportation history and in achieving the goals of the organization.

Officers & Trustees

Chairman of the Board

John Brainard
j944wb@aol.com

President & Editor

David Hamilton
transportsim@aol.com

VP- Membership / Treasurer

Marie Brainard
j944wb@aol.com

Secretary / Counsel

Jeremy Tuke

Chaplain / Sgt at Arms

Chip Greiner

Historian

Peter Gores

Trustees at Large

Lyman Gray, Sam Lombardi, Joel Shaw, Sam Ferrara, Phil Simms, Leonard Gordy, Bob Lipman, Randy Bushart, William Sternitzke, Bill Roberts, Bob Myers, Joey Senese, Matthew Bushart, Michael Decker

www.klnl.org



For Current News
"Like" KL&L on

[facebook](https://www.facebook.com/klnews)

From the President's Desk.....

Despite having a work schedule that didn't allow me to get out as much as I would have liked this past year, I made a quick trip to the 2022 Gaithersburg show in November. I was only able to attend on Saturday, which is officially a setup day, but is actually when most of the deals happen. While the rooms were not as tightly packed with tables and people as they once were a decade ago, there was no shortage of collectors buying and selling the "good stuff." I went home with a small pile of timetables, lanterns, and books - certainly worth the trip!

I've attended a couple of railroad hobby shows this fall as well, and picked up a few things. Finding railroad artifacts at those events can be a roll of the dice, but I don't want to risk missing something. In addition, many shows serve as fund raising events for local railroad historical societies, so the admission fee supports railroad preservation projects. There are a few winter shows coming up on the calendar, so make plans to attend some!

Of course, I'm looking forward to the upcoming 2023 Key Lock & Lantern Convention in Carbondale, PA, over the weekend of May 11-14. The convention committee is still finalizing several details, and registration information will be available soon. If you are not already on the KL&L email list, be sure to sign up to receive updates about the convention and other events (see page 15 for information). Last year's convention had over 100 participants and more than 50 tables at the show, and we expect this year's event to be even larger.

Despite the growth of the convention, it has still retained that small show atmosphere, with members meeting in the hotel lounge, making deals in the parking lot, and discussing railroading until late in the evening. It has been nice to still have those traditional KL&L activities, and then walk into a huge room full of memorabilia in the morning. Internet auctions and online lectures are a great way to reach large audiences, but nothing beats getting together in person!

On the topic of online auctions, eBay now has a service for collectors of sports and trading cards where your purchases are stored in the "eBay Vault," and you don't have to actually take possession of them. This idea seems antithetical to the concept of collecting, but there is evidently a demand for it. The same goes for the Non-Fungible Token (NFT) market, which thankfully (in my opinion) has cooled off.

I'll admit that I prefer to collect fungible things. Holding a pass that was in Jay Gould's hand when he signed it, train orders hooped up to a Nickel Plate fast freight, or a lantern that may have been used to flag the City of New Orleans is what makes collecting enjoyable for me. Things that are acquired simply as collectibles or for their investment value will come and go, but artifacts that provide a physical connection to history will never lose their appeal.

As always, thanks for everyone's support of KL&L, and keep an ear to the wire for convention announcements.

Dave Hamilton

KL&L President & Editor

Railroad Event Calendar



Upcoming historical society conventions, special events, railroadiana shows & auctions. Listings subject to change. Check show web sites before traveling and visit www.klnl.org for updates. See submission guidelines at the end of the calendar.

Look for Advertisements in this Issue & on the Key Lock & Lantern Website for [Events Shown in Blue](#)

- Jan TBA** **Georgetown, CO** - Railroadiana Consignment Auction. Railroad Memories.
Info: www.railroadmemories.com
- Jan 5-6** **Lafayette, IN** - Railroadiana Consignment Auction. Rail & Road Auctions.
Info: <https://rarauctions.com>
- Jan 14-15** **DeLand, FL** - Florida Rail Fair. Golden Spike Enterprises.
Info: www.gserr.com.
- Jan 14** **Duluth, MN** - Nordic Auction & JM Hobby Supply Railroadiana Auction.
Info: <http://www.nordicauction.com>.
- Jan 15** **Utica, NY** - TTCS Annual Train Show. Utica Union Station. <https://www.facebook.com/TTCSUticaTrainShow>.
- Jan 21** **Atlanta, GA** - Atlanta Railroad Show. Golden Spike Enterprises.
Info: www.gserr.com.
- Jan 28** **LaCrosse, WI** - Tri-State Rail Sale Train Show by 4000 Foundation.
Info: <http://4000foundation.com>.
- Jan 28-29** **Springfield, MA** - Railroad Hobby Show. Eastern States Expo.
Info: www.railroadhobbyshow.com.

Continued on Page 31

Front Cover: Buffalo Creek & Gauley RR locomotive #14, on display at the Gaithersburg History Park. Photo by Dave Hamilton.

Gaithersburg Show is Still the Main Event for Serious Collectors of Railroadiana

With numerous auctions of high end railroad memorabilia being held in recent months, the wallets of many collectors are being stretched thin. Add to that the convenience of online bidding, and it would seem that the good old-fashioned railroadiana show is perhaps not as important as it once was. However, the Gaithersburg transportation artifacts show is still a “must attend” event for serious collectors.

Despite the fact that there are fewer exhibitors setting up at the fairgrounds, when compared with shows of a decade ago, the quality of the railroadiana offered for sale remains high, and there is still something there for everyone. The 2022 show, held over the weekend of November 5th & 6th, was well attended and most dealers reported strong sales.

As usual, a fair amount of deals were made during setup hours on Friday and Saturday, with experienced attendees purchasing early admission passes. And, plenty of casual buyers showed up during the official show hours on Sunday, making it a good weekend all around. Once again, the show at Gaithersburg proved itself to be the “main event” for railroadiana collectors. *Photos by Dave Hamilton.*



KEY LOCK & LANTERN

Ads Reach Serious Collectors

Contact KL&L at transportsim@aol.com

Railroadiana Auctions - Spring & Fall - Brookline, NH

Railroadiana Consignment Auctions Held Each Spring & Fall

Brookline Auction Gallery LLC - 32 Proctor Hill Rd, Brookline, NH 03033

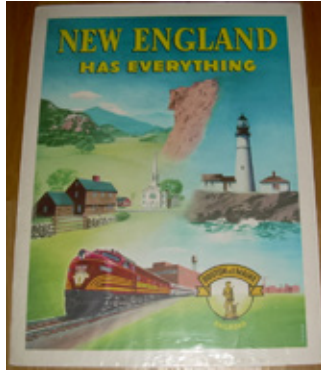
Auction information including photos: www.tagtown.net

Scott Czaja - Sales Manager (978) 779-2904

Highlights of Recent Sales



Concord RR Thompson Lantern: \$1700,
Triple Marked Boston & Albany New
England Glass Lantern: \$1750



Boston & Maine Railroad New
England Travel Poster with
Minuteman Logo: \$410



Grand Central Station Lantern with Green
Cast Globe: \$3100, New York New Haven &
Hartford - Hartford Division Thompson: \$2500



Cast Iron Railroad Crossing Stop,
Look & Listen Sign: \$400



Nickel Plate Road Berkshire #774
Number Board: \$2200



St. Albans Street Railway Dock
Master Hat Badge: \$625

Next Sale: April 21-22, 2023



Lehigh Valley RR brass top marker lamp: \$700
New England RR Fancy Cast Lock: \$1100



Boston & Maine RR Silver
Casserole Dish: \$800



Grand Trunk Railway Brass Lock: \$1800
Pennsylvania RR cast fixed globe: \$2900



Pennsylvania Railroad Gate Sign: \$400



New Haven RR Winsted, CT
Wax Sealer: \$1100



Central Vermont Railway Ticket Office &
Pullman Reservations Sign: \$675

Now on LiveAuctioneers.com - We also accept absentee bids via: e-mail & mail
Quality consignments are welcome for future sales - call Scott or email: sczaja@hotmail.com

Railroad Memories Auction Brings High Prices for a Variety of Rare Artifacts

Railroad Memories always has top shelf memorabilia in its catalog sales, but auction #114 on November 13th certainly brought some eye-opening results. Rare lanterns, locks, china, and advertising material were among the lots that realized four and five figure prices. Additional railroadiana from these and other prominent collections will be offered in auction #115, so keep an eye in the KL&L website for announcements. *Photos and prices realized courtesy of Railroad Memories Auctions and do not include buyers premiums and shipping.*



A 1925 Chicago Milwaukee & St. Paul Railway brass paperweight went to a new home for a \$440 bid.



A Southern Pacific A&W brass top lantern marked "SP Co" with a matching blue cast globe sold for \$51,750.



A \$1050 bid was needed to purchase this San Diego & Arizona Railway "Carriso" creamer made by Buffalo.



A \$3300 bid was needed to buy this Vulcan Iron Works builders plate from a Merritt & Gilbert 0-6-0 locomotive.

Continued on Page 18



RAILROAD MEMORIES

AUCTION 115

Scheduled to open late January 2023! With more amazing offerings from the Kidd Museum as well as the Craig Neros estate. With over 500 lots this promises to be another outstanding auction. Some highlights include:



GN Rocky China



Beautiful Northern Pacific Sign



Turquoise Room Plate



D&RG Key



F&CC RR LOCK

Passes



SPRR Lantern



BA&P Lock



UP Key



OSLRR CO CAP BADGE



GN Matchsafe



DRUMHEAD

Brochures



GNR Water Carafe

Wax Sealers

Step Boxes

Timetables



NP Smoke Stand

www.railroadmemories.com

QUESTIONS: 303-569-5185 email: railroadmemories@gmail.com

Jazz Performances Return to Lake Superior Railroad Museum During Month of January

The winter months are usually the “off season” for railroad museums in the northern half of the United States and Canada, with less tourist travel taking place and cold weather limiting their activities. The Lake Superior Railroad Museum in Duluth, MN is certainly in the heart of snow country, but with a large indoor exhibit space, it is only a matter of holding events to encourage visitors to brave the elements and make a winter visit.

Beginning during the month of January and continuing through April, the museum will be hosting Jazz concerts on each Saturday afternoon, from 3-6pm. The Club Saratoga



Admission to the event is \$6 per person, which includes a \$2 discount coupon for the museum’s concession stand. Food selections will include gourmet hot dogs, Roundhouse Chili, snacks, chips, and popcorn. There will be a cash bar, and complimentary coffee and hot cocoa will be served.

The Lake Superior Railroad Museum is the main attraction in the restored Duluth Union Depot, with a large collection of rolling stock displayed along the former platforms. With interactive exhibits about the region’s transportation history, the museum appeals to both serious historians and family members alike.



Jazz Quartet will perform live in the train shed, along side the museum’s collection of historic equipment. The quartet features Randy Lee on reeds, Paul Lerino on piano, John Thorene on bass and Jerry Siptroth playing drums.

The music of Duke Eillington, Count Basie, Glen Miller, Thelonious Monk, and Bennie Goodman will echo throughout the building, along with other selections from the past and modern eras of jazz. Musical commentary will be provided by group leader Randy Lee, and museum Executive Director Ken Buehler will weave some railroad history into the day’s performance.



From Memorial Day through mid-October, excursion trains of the North Shore Scenic Railroad operate from the station, utilizing historic equipment from the museum’s collection. A summer or fall visit to the museum can include a ride on this scenic trip on the Lakefront Line along Lake Superior.

With all indoor exhibits, the museum is open year round, seven days a week, from 10am to 5pm in the winter and from 10am to 6pm in the summer. It is closed on major holidays and any time the Duluth Transit Authority shuts down bus service due to snow. For more information, visit the museum website at <https://lsrm.org>. *Photos courtesy of LSRM.*



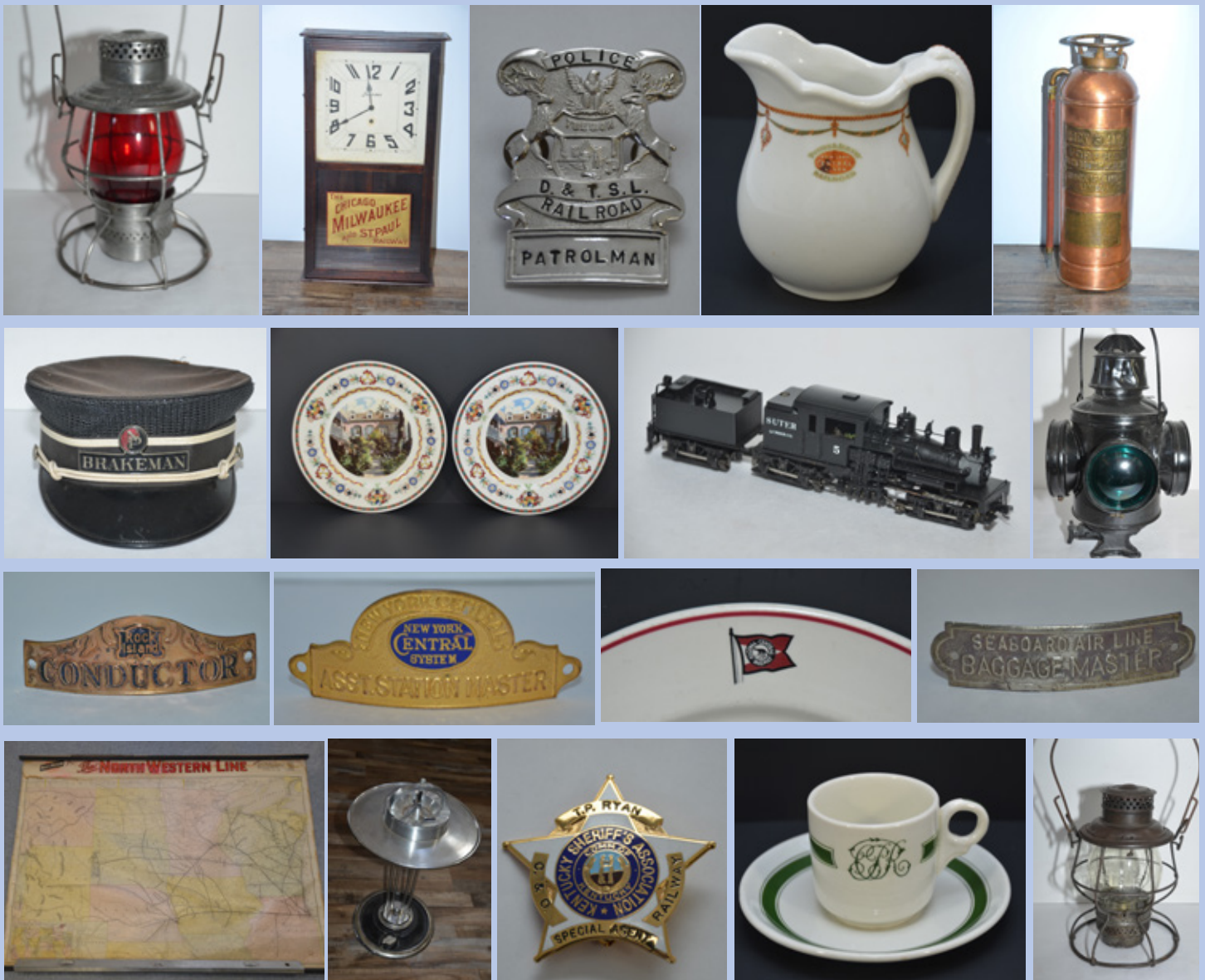
JM HOBBY SUPPLY & RAILROAD ARTIFACTS and NORDIC AUCTION

Present Our Winter 2023 Railroadiana Auction
Saturday, January 14, 2023, 9:00AM CST

Nordic Auction Events Center, 2713 Courtland St., Duluth, MN 55806

Come participate in-person at the Nordic Auction Events Center, or bid live, online, via LiveAuctioneers!
Preview on January 12 & 13 at the Nordic gallery. For online catalogs & registration information visit:
www.nordicauction.com, www.jmhobbysupply.com & www.liveauctioneers.com

Lanterns, Hardware, Maps & Paper, Uniform Hat & Badge Collection, Estate Collection of China, Depot Clocks, HO & N Scale Brass Models & More



Now taking consignments for 2023 railroadiana auctions! We offer the lowest buyers & sellers fees of any major national railroad auction service! Call us at 920-857-9670 or 218-590-3032 for information.

Rail & Road Auctions Picks Up Steam With Sale of Several Railroadiana Collections

Rail & Road is a relative newcomer to the railroadiana auction scene, but company has quickly found a place in what is becoming a booming market. The two day October railroadiana auction included memorabilia from the collections of Brian Maiher, Charles Stats, and others, along with a variety of consignments. The January auction features additional lots from these collections, with more sales scheduled for March and May. *Photos and prices realized courtesy of Rail & Road Auctions and do not include buyers premiums and shipping.*



A Nashville Chattanooga & St Louis Railway silver teapot by Reed & Barton went to a new owner for a \$250 bid.



A high bid of \$750 took home this Delaware & Hudson bellbottom by CT Ham with red cast script logo globe.



A \$225 bid purchased an interesting Christening Prayer poster for NC&STL locomotive #535, the "Marie."



The Canadian Locomotive Co. builders plate from Canadian National 4-8-2 #6024 sold for a high bid of \$650.



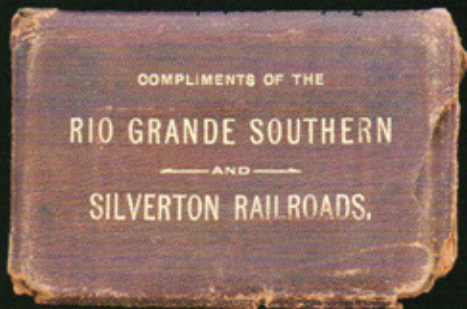
A Western Electric selector from the Frisco yard in Armory, Mississippi found a new home for a high bid of \$350.

Continued on Page 24

Rail & Road Winter Railroadiana Online Auction

January 5th and 6th, 2023

Featuring Railroad, Fire & Automotive Collectibles



Rail & Road Auctions is proud to present our Winter 2023 Transportation Auction. The sale features a quality selection of Railroadiana, Fire Memorabilia, and Automotive Art and Collectibles

View the entire catalog on our website starting in early December. Rail & Road offers online, absentee, and telephone bidding for this sale.

www.BIDRAR.com
765-412-7926



National Museum of Transportation in St. Louis to Hold Annual Train Show



The National Museum of Transportation in St. Louis is home to a large collection of railroad rolling stock.

The National Museum of Transportation will once again be holding its annual train show in the Earl C. Lindburg Automobile Center at the museum complex in St. Louis, MO. The model train swap meet will take place from 9am to 2pm on Saturday, February 25th. Admission to the museum is \$5 on this day, which includes entrance to the train show.

Exhibits at the museum include aircraft, boats, automobiles, and of course trains. Rolling stock includes a Union Pacific Big Boy, early General Motors diesels, an 1850's Boston & Providence 4-4-0 steam locomotive, and a large collection of steam locomotives representing railroads from all over North



America. Also included in the collection are a large number of freight and passenger cars, cabooses, work equipment, and transit cars. With almost 200 exhibits, it is considered the largest collection of transportation vehicles in the world.

Located on Barrett Station Road in St. Louis, MO, the National Museum of Transportation is open year round, with both indoor and outdoor exhibits in a sprawling park. For more information about the train show, and the museum in general, visit their website at <https://tnmot.org>. *Photos by the National Museum of Transportation.*



Railroad Museums & Historical Societies

Send in news & photos to

KEY LOCK & LANTERN

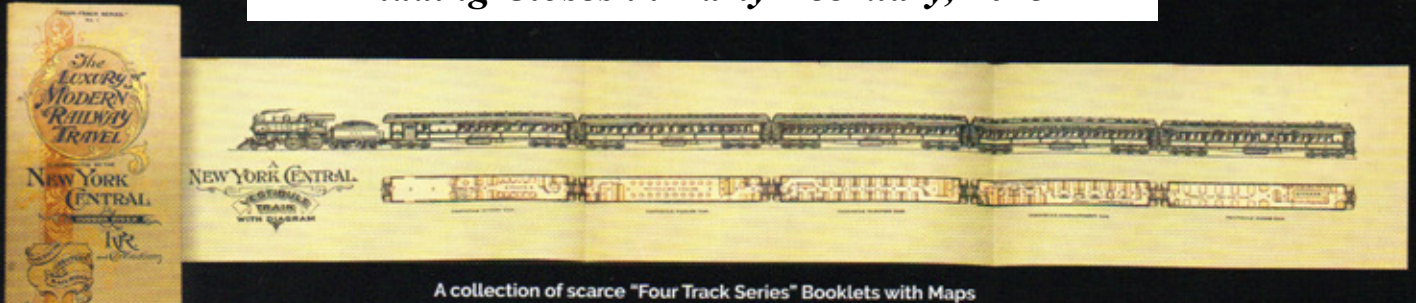
Reach 500+ readers with news about your special events & programs

E-mail: transportsim@aol.com

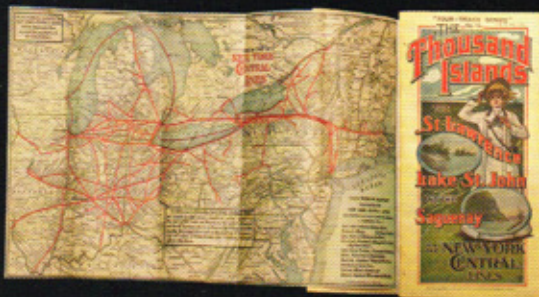
Rare Ephemera From the Ed McHugh Estate Collection

Online Auction 15% Buyer's Premium

Bidding Closes in Early February, 2023



A collection of scarce "Four Track Series" Booklets with Maps



Four Track Series No. 10, 1903



Unusual NYC 20th Century Limited Ephemera



Union Pacific Sights and Scenes, 1892



A Collection of Olin Wheeler's "Wonderland" Promotional Books for Northern Pacific Railroad Beginning with Volume One, 1886

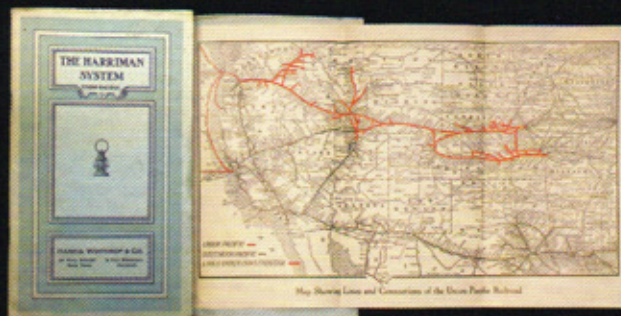


Very Rare 1876 Pocket Map of the Trans Continental Route from Chicago to California along the Central Pacific, Union Pacific and Rock Island Railroads. Printed in 1876, this is one of Rand McNally's earliest maps and one of only three examples offered for sale in the last 30 years.



SOULIS
AUCTIONS

www.SoulisAuctions.com
816.697.3830



A Rare Union Pacific Harriman System Booklet with Map

2023 Key Lock & Lantern Convention Registration Opening Soon

Key Lock & Lantern will return to the Hotel Anthracite in downtown Carbondale, PA for its 2023 annual convention. Put the dates of May 11-14, 2023 on your calendar today! Final event details are still being finalized, but the schedule will feature the Saturday, May 13th, Transportation History Exposition with railroad history exhibits and over 50 tables of railroadians for sale or trade.

The convention program will also include the usual lineup of programs, dinner, and other activities - details will be announced on the KL&L website and Facebook page as they are confirmed. A link to registration forms (and online registration) will be sent to members via email as soon as the registration period opens.



If you received the link to this newsletter from the KeyLockLantern Gmail address, then you are already on the list for convention notification. If you do not receive the newsletter link from KL&L, be sure to sign up for our email list (see information on the next page).

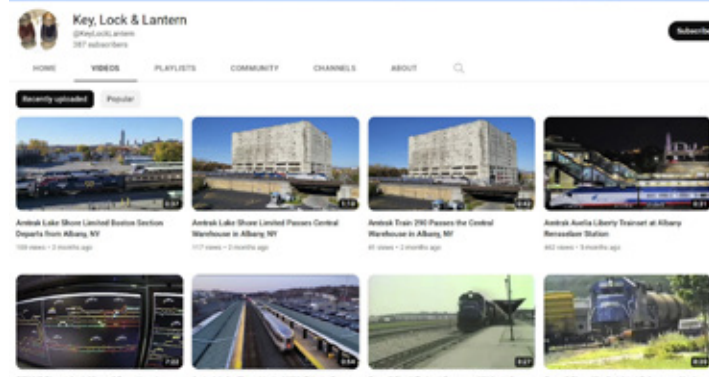
Announcements will also be made on the Key Lock & Lantern Facebook page. "Follow" KL&L on Facebook, and "Subscribe" to the KL&L YouTube Channel to stay in touch with Key Lock & Lantern!



Stay Connected With KL&L Online

While Key Lock & Lantern may be an organization for people with an interest in preserving transportation and industrial history, members of the group are not stuck in the past when it comes to finding and sharing information. Online resources and social media have dramatically transformed the research and publishing fields over the course of the last two decades, and KL&L has stayed current with these trends.

The Key Lock & Lantern website (www.klnl.org) contains a library of all issues of the digital *Key Lock & Lantern News*, which is available for everyone to view or download. KL&L members have access to digital editions of current issues of the *Key Lock & Lantern* magazine, with back issues in the process of being scanned for future inclusion on the site. If you are a current KL&L member and do not have a password to access this material, email webmaster Dave Hamilton at transportsim@aol.com.



The website also includes a calendar of events related to transportation history and collecting, links to other online resources, and advertisements for auctions, shows, and antique dealers. Online membership renewal and convention registration via PayPal are also available at www.klnl.org.

When the bimonthly digital newsletter is published, a link is sent to everyone who has signed up for the KL&L email list. If you received the link to this newsletter directly from the KeyLockLantern Gmail address, then you are already subscribed to the mailing list, and no further action is needed. If you do not receive notifications directly from KL&L, don't risk missing an important announcement - sign up today!

From the home page at www.klnl.org, click on the "About KL&L / Join / Contact Us" item on the menu. At the bottom of the "About KL&L" page is an option to "Subscribe" to the KL&L email list. Simply type your email address in the box and hit the "Subscribe" button. The email list is hosted by MailChimp, which makes it easy to unsubscribe at any time, and your address is never shared with anyone else.

Another source of current news and information is the Key Lock & Lantern Facebook page. Many historians and collectors utilize Facebook groups and marketplace sales to the extent that it has become a valuable tool for sharing information and meeting other researchers. The address of the KL&L page is <https://www.facebook.com/railroadiana> and all of the content is available for everyone to view. To see posts and updates in your Facebook news feed, be sure to "Follow" the Key Lock & Lantern page.

Key Lock & Lantern also maintains a YouTube page, where historical and current videos of subjects of interest to KL&L members are published. While there is currently a modest selection of videos available for viewing, it is planned to add more in the near future. To receive notifications when new content is added, be sure to hit the "Subscribe" button on the main page at <https://www.youtube.com/@KeyLockLantern> or when viewing any individual video.

Key Lock & Lantern has no plan to eliminate the printed magazine, or to phase out in-person events such as the annual KL&L Convention. In fact, we plan to expand these traditional activities as we go forward. However, the vast online universe presents almost unlimited opportunities for the organization to achieve its goals. Visit www.klnl.org today to access all of these resources!



Western New York Railway Historical Society to Hold Winter Train Show

The Western New York Railway Historical Society will hold its 32nd Annual Winter Train and Toy Show over the weekend of February 18th & 19th. The Events Center at the Erie County Fairgrounds in Hamburg, NY will be filled with operating model train layouts, railroad displays, and over 350 tables of exhibits and vendors.

Some of the groups scheduled to set up layouts at the show include the Niagara Orleans Model Railroad Engineers, the Gowanda Model Railroad Club, and the Flower City Tin Trackers. Five layouts will be in operation, representing HO, N, O and S scales. There will also be two Lego train layouts and a "Thomas and Friends" play area for the kids.



Several guest speakers are lined up to give presentations on both days, and other local historical societies are expected to exhibit at the show. Representatives of the Niagara Frontier Chapter of the National Railway Historical Society, the Buffalo Harbor Museum, and the Salamanca Rail Museum will be on hand to give updates about their activities.

While most vendors typically offer model trains, books, and videos for sale, several railroadiana collectors (including members of KL&L) are expected to attend. There is usually



A recently restored Lehigh Valley locomotive on display at the WNYRHS Williamsville, NY depot museum.

some interesting memorabilia to be found among the many tables, and some good deals for those who arrive early.

The show is open from 10am to 5pm on Saturday and from 9am to 4pm on Sunday, with an \$8 entry fee for adults and children under 12 admitted for free. All proceeds will benefit the many significant preservation projects of the Western New York Railway Historical Society, which operates the Heritage DiscoverY Center in Buffalo and has restored depots and rolling stock at several locations in western New York. For more information, visit the WNYRHS website at <http://www.trainweb.org/wnyrhs>. *Photos by WNYRHS.*



The society's cosmetically restored Pennsylvania Railroad I-1s Class Baldwin decapod steam locomotive No. 4483.

KEY LOCK & LANTERN

Ads Reach Serious Railroad Enthusiasts
Contact KL&L at transportsim@aol.com

Southern California Railway Museum to Hold Swap Meet & Pacific Electric Day

The Southern California Railway Museum (formerly known as the Orange Empire Railway Museum) will hold its annual spring outdoor railroading swap meet on March 4, 2023, on the grounds of the museum in Perris, CA. Vendors will be selling authentic railroad memorabilia, collectibles, artwork, books, and model trains. This event is southern California's largest outdoor railroad swap meet, with flea market style spaces available to exhibitors for a \$20 fee.

In addition to vendors, several railroad historians and preservationists will be on hand to present information about the history of railroading in southern California. The event is held in conjunction with the museum's "Pacific Electric Day," celebrating the history of the red interurban trolley cars that were once a familiar sight in the region.



Vendor space is available on a first-come basis, with setup beginning at 7am at the back gate on Mapes Road. Dealers must bring their own tables, chairs, and tents, and may pay the \$20 fee upon arrival. A participant waiver must also be completed, acknowledging current health regulations.

Founded in 1956 by members of the Southern California Division of the Electric Railroaders Association, the museum maintains a collection of over 35 pieces of equipment from the Pacific Electric Railway, 25 Los Angeles Railway cars, and rolling stock from other regional electric railways. Over the years, this collection has been supplemented by diesel locomotives and cars from the Union Pacific, the Santa Fe, and the Southern Pacific railroads.

For more information about the Southern California Railway Museum, the swap meet, and other upcoming events, visit their website at <https://socalrailway.org>. Photos courtesy of Southern California Railway Museum.



The Mainline "Blimp" Train #418 & #498 will depart on the hour between 11am and 4pm, while Mainline Pacific Electric #717 will run on the half hour between 11:30am and 4:30pm. The Birney Loop Line #332 will depart for rides on demand between 11am and 4pm. Swap Meet hours are 9am to 2pm. Admission to the swap meet is \$7 for adults and \$5 for children, with tickets that include the trolley rides available for \$12 for adults and \$8 for children.





This Northern Pacific cast metal Great Big Baked Potato inkwell went to a new collector for a high bid of \$800.



A bid of \$1300 purchased this Colorado & Southern Trinidad pattern butter pat with light wear & discoloration.



An Adams & Westlake from the Fremont Elkhorn & Missouri Valley RR with red etched globe sold for \$1700.



A California Western Railroad brass heart lock with no manufacturer marks sold for a high bid of \$1400.



A \$1550 bid bought this 24" enameled Great Northern and Spokane Portland & Seattle Western Star train sign.

Continued on Page 19



A Northern Express monad logo badge by Whitehead & Hoag Co. of New Jersey sold for a high bid of \$440.



A \$6250 bid purchased this Union Pacific Railway Co. brass heart lock by Union Lock & Hardware w/key.



An \$850 high bid took home this Great Northern Oriental pattern demitasse cup & saucer by Syracuse.



A 1936 Dallas Texas Centennial Exposition menu from the Texas & Pacific Railway sold for a high bid of \$625.



A 20" porcelain enameled Great Northern Express Co. sign by Enameled Steel Sign Co. of Chicago sold for \$1250.

Continued on Page 20



A unique Oregon Washington Railway & Navigation gold presentation medal went to a new caretaker for \$1000.



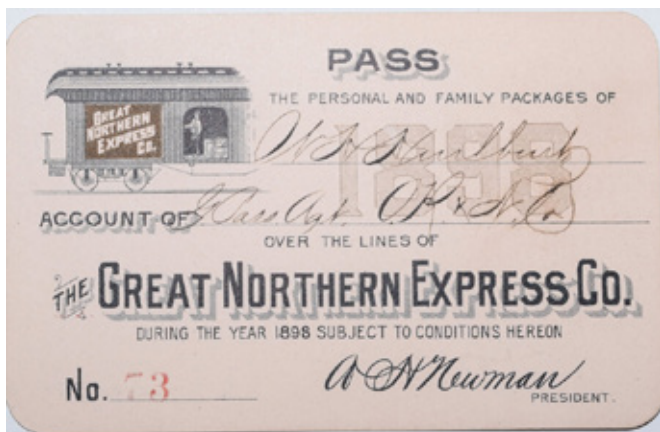
A \$1050 bid sent this Fort Worth & Denver City RR Adlake Reliable with red cast FW&DC globe to a new home.



Switch keys: Cleveland Columbus Cincinnati & Indianapolis Railroad (\$300), Fremont Elkhorn & Missouri Valley RR (\$525), St. Paul Minneapolis & Manitoba Railroad (\$775).



A Southern Pacific Company "Apron Tender" nickel cap badge with no hallmark sold for a high bid of \$975.



A \$700 bid bought this ornate Great Northern Express Co. 1898 pass for "Personal & Family Packages"



A \$1050 bid bought this American Locomotive Company builders plate from Duluth Missabe & Northern #336.

Continued on Page 21



Every western railroad collector needs a spur shaped ashtray. This one from the Burlington Route sold for \$320.



A \$1650 bid was needed to buy this silver and cut glass Great Northern Railway pickle jar & fork by Gorham.



A \$380 bid took home this Great Northern Railway Porter uniform cap badge with no manufacturer hallmark.



An American Express Co. 17" porcelain enameled sign by O.E. & Co. Ltd. sold for a high bid of \$600.



A Denver & Rio Grande Western Railway brass 6-lever pancake car lock by Miller sold for a \$3000 high bid.



A \$1550 bid purchased this Northern Pacific Stampede pattern demitasse set by Onondaga Pottery.

Continued on Page 22



A Northern Pacific BTBB by Steam Gauge & Lantern with red cast NPRR globe sold for a high bid of \$5750.



A \$625 bid was needed to purchase this 1928 Northern Pacific Christmas theme desk calendar.



A Great Northern RR U.S. Mail badge by Twin City Stamp & Stencil Co. of Minneapolis sold for a \$290 bid.



An \$8250 bid sent this Burlington Route Ak-Sar-Ben pattern service plate by Bauscher to a new owner.



A Great Northern Portland, Oregon wax sealer sold for \$340, while an Oregon Railway & Navigation Company wax sealer from Dalles Station, River Division brought \$525.

Continued on Page 23



An Oregon Railroad & Navigation Company A&W lantern with red cast OR&N Co. globe sold for \$1200.



A \$2050 bid purchased this Oregon Short Line Signal Department Keen Kutter lock by EC Simmons.



A \$1600 bid sent this Denver Laramie & Northwestern Railway brass heart car lock by Miller to a new home.



An MM Buck bellbottom from the St. Joseph & Grand Island Railway with clear cast globe sold for \$2450.



Cast iron train order signal desk levers marked "EB" and "WB" went to a new owner for a high bid of \$700.



A \$350 bid purchased this A&W Reliable from the Wheeling & Lake Erie RR with matching W&LERR red cast globe.



A \$200 bid purchased this lot of Nashville Chattanooga & St. Louis Railway timetables from the 1920's through 40's.



A hand colored lithograph of Breese Kneeland / New York Locomotive Works 4-4-0 "Young America" sold for \$1200.



An 1886 Berlin Iron Bridge Co. of East Berlin, CT builders plate went to a new home for a high bid of \$675.

Continued on Page 25



A NC&STL RW brass heart lock by Geo. B. Bahr of Louisville, KY with NC&STL Adlake key sold for \$200.



A \$400 bid purchased this New York Chicago & St. Louis RR marker lamp marked "C.L. DIST Return to Frankfort."



A \$2500 bid bought this Ashton cast bronze dual airbrake gauge, showing main & equalizing res. and brake pipe.



A New York Central Railroad step box with restored top and original feet went to a new owner for a \$325 high bid.



A 15"x18" Railway Express Agency "Packages Received Here" sign with some wear still brought a \$325 high bid.

Continued on Page 26



A Buffalo & Lake Erie Traction Co. Adlake Reliable with clear etched globe went to a new owner for \$525.



A \$3900 bid purchased this Mcavity five chime steam locomotive whistle from a Canadian National Northern.



A \$400 bid was needed to buy this Southern Railway ticket dater die from the Atlanta, Georgia city ticket office.



A modern era interlocking local control panel from Ansonia, Ohio went to a new owner for a high bid of \$475.



An Alco framed builders photo of Nashville Chattanooga & St. Louis 4-8-4 #579 sold for a high bid of \$375.



A \$300 bid took home this 1905 cast iron builders plate from the York Bridge Company of York, PA.

Continued on Page 26



A pair of original condition unfired Pennsylvania Railroad keystone logo cabooses marker lamps sold for \$625.



A \$250 bid was needed to purchase this 16" diameter double sided porcelain Stop sign with wooden handle.



A \$325 bid bought this Erie Railroad diamond logo ticket dater die from the Athenia, New Jersey station.



A 13x19" Hamilton Watch lithographed advertising sign by the Meek Co. of Coshocton, OH sold for a \$350 bid.



A Rio Grande advertising serigraph attributed to Frank L. Philips of Denver sold for a high bid of \$1100.

Continued on Page 28



A Waterloo, Cedar Falls & Northern Railroad marker lamp in need of restoration brought a high bid of \$650.



A \$650 bid bought this Terre Haute & Indianapolis RR BTBB by Adams & Westlake with red cast TH&I globe.



A Union Switch & Signal semaphore style indicator and lever in original condition went to a new home for \$225.



An Adlake switch lamp with both a Michigan Central tag on and the New York Central oval sold for a high bid of \$225.

Continued on Page 29



A Detroit, Toledo & Ironton Freight House steel sign left the barn where it was stored for years for a high bid of \$3700.



A Norfolk & Western Railway switch lamp by Armspear with a patent date of August, 1919 sold for a \$650 high bid.



A Rio Grande serigraph depicting a train exiting the Moffat Tunnel went to a new collection for a high bid of \$1150.

Railroad Museums & Historical Societies

Send in news & photos to

KEY LOCK & LANTERN

E-mail: transportsim@aol.com

The New York-Pennsylvania COLLECTOR

Living with Antiques, Art & Americana

A Monthly Publication Featuring News & Articles
About Antique Collecting & History



- *Auction & Show Listings*
- *Club Meetings & Events*
- *Identification & Fakes*
- *Antique Restoration Tips*
- *Museums & Historic Sites*
- *Dealer & Flea Market Ads*

Online Event Calendar
Online Show & Dealer Ads
Subscriptions
Advertising Information

www.nypa-collector.com

NYPA-Collector

Railroad Event Calendar

Continued from Page 2

- Jan 29** **Griffith, IN** - Blackhawk Chapter NRHS Swap Meet Railroadiana Show.
Info: www.blackhawknrhs.org
- Feb TBA** **Lone Jack, MO** - Railroadiana Auction by Soulis Auctions.
Info: www.soulisauctions.com.
- Feb 4-5** **Colorado Springs, CO** - Train Expo Colorado. TECO 42.
Info: www.tecoshow.org.
- Feb 4** **Jacksonville, FL** - Jacksonville Rail Fair. Golden Spike Enterprises.
Info: www.gserr.com.
- Feb 11** **Sharpsburg, MD** - Hagerstown Model RR Museum Train Show
Info: www.antietamstation.com.
- Feb 15-16** **Buffalo, NY** - Western New York Train Show. WNY Railway Historical Society.
Info: www.wnyrhs.org.
- Feb 18** **Houston, TX** - Greater Houston Train Show. San Jacinto Model Railroad Club.
Info: <http://sanjacmodeltrains.org>.
- Feb 19** **Buena Park, CA** - California Express Railroadiana Show.
Info: www.californiaexpress.net.
- Feb 25-26** **Allentown, PA** - Spring Thaw Train Show. Allentown Train Meet Associates
Info: www.allentowntrainmeet.com.
- Mar 4** **Perris, CA** - Southern California Railway Museum Railroadiana Swap Meet.
Info: <https://socalrailway.org>.
- Mar 9-10** **Lafayette, IN** - Railroadiana Consignment Auction. Rail & Road Auctions.
Info: <https://rarauctions.com>
- Mar 11** **Harrisburg, PA** - Harrisburg NRHS Railroad Show & Collectors Market.
Info: <https://www.harrisburgnrhs.org/>
- Mar 18** **Corvallis, OR** - Winterail Photo Expo & Railroad Collectibles Sale.
Info: www.winterail.com.
- Mar 21-23** **Denver, PA** - Morphy Auctions Railroadiana & Petroliana Auction.
Info: www.morphyauctions.com.
- Mar 26** **Batavia, NY** - Great Batavia Train Show. Genesee Society of Model Engineers.
Info: www.gsme.org.
- Apr TBA** **Duluth, MN** - Nordic Auction & JM Hobby Supply Railroadiana Auction.
Info: <http://www.nordicauction.com>.
- Apr 1-2** **Denver, CO** - Rocky Mountain Train Show. Train Collectors Association.
Info: <http://rockymountaintrainshow.com>
- Apr 2** **Amsterdam, NY** - Rails Along the Mohawk Train Show
Info: www.ahts.org.
- Apr 15-16** **Calgary, AB** - Calgary Super Train Railroad Show.
Info: www.supertrain.ca.
- Apr 15-16** **New Braunfels, TX** - New Braunfels Train Show.
Info: www.nbrmm.org
- Apr 21-22** **Brookline, NH** - Railroadiana Consignment Auction. Brookline Auction Gallery.
Info: www.tagtown.net.
- Apr 23** **Griffith, IN** - Blackhawk Chapter NRHS Swap Meet Railroadiana Show.
Info: www.blackhawknrhs.org
- May 4-5** **Lafayette, IN** - Railroadiana Consignment Auction. Rail & Road Auctions.
Info: <https://rarauctions.com>
- May 11-14** **Carbondale, PA** - Key, Lock & Lantern Convention & Railroad History Expo.
Info: www.klnl.org.

Send listings to: transportsim@aol.com

There is no charge for calendar listings. Train shows must include dealers of authentic railroad memorabilia or related material, and auctions must include at least 20 lots of railroadiana. Other events must be directly related to railroad history (special exhibitions, lecture programs, conventions, limited excursions, etc.). Regular monthly group meetings, model train meets & scheduled tourist train trips are not eligible, unless related to a special event. Events are listed space permitting, at the editor's discretion. Listings are subject to error or change. Always check show web sites before traveling.

Visit www.klnl.org for More Listings

Key Lock & Lantern Email Notifications

If you are not already receiving the link to this newsletter directly from KL&L, go to the "Contact KL&L" page on the Key Lock & Lantern website at www.klnl.org and sign up for our email list. You will receive links to the *KL&L News* when it is published and occasional notifications of events of interest to members. The email list is hosted by MailChimp, which makes it easy to unsubscribe at any time, and KL&L never sells or shares its email list with outside parties. Don't miss important news and announcements - sign up today!

Want Ads for KL&L Members

As noted in previous issues, the "Want Ad" section of the *KL&L News* is undergoing an update to remove outdated notices. If you would like to submit an ad for inclusion in future issues, contact KL&L editor Dave Hamilton at transportsim@aol.com. Basic want ads are free for current Key Lock & Lantern members.

Member Address Changes & Corrections

The *Key Lock & Lantern* magazine is sent via First Class Mail and is therefore forwarded by the U.S. Postal Service for the designated period following an address change. However, due to the frequency of publication of the magazine, the time for forwarding may expire in between issues, and your magazine may be returned to KL&L. Please make sure that Key Lock & Lantern is on your list of organizations to notify in the event of a change of address. Also, please check your mailing label when receiving your copy of the magazine, and advise KL&L if any corrections are needed. Contact Marie Brainard at j944wb@aol.com if changes are required.

Visit www.klnl.org for More Listings

KEY LOCK & LANTERN

Can Help Promote Your
Auction, Show or Event

With Advertising in KL&L Publications

2300+ Facebook Followers

200+ Daily Website Visits

450+ Newsletter Subscribers

Contact KL&L Editor Dave Hamilton at
transportsim@aol.com



All submissions for the KL&L magazine, news items for the digital KL&L News & general inquiries should be sent to:

KL&L President & Editor
David Hamilton
E-mail: transportsim@aol.com

Send membership applications, dues payments, and address changes to:

KL&L Chairman John Brainard &
VP-Membership Marie Brainard
E-mail: j944wb@aol.com

Join or Renew Your
KEY LOCK & LANTERN
Membership Online at
www.klnl.org

KL&L Membership Form (2023 Membership Year)

Please make check or money order payable to Key, Lock & Lantern, Inc. and forward to:
Marie Brainard, KL&L Membership, 35 Nordhoff Place, Englewood, NJ 07631-4810

Name _____

Representing (business or museum, if applicable) _____

Address _____

City _____ State/Prov _____ Zip/Mail Code _____

Phone _____ E-mail _____

Basic membership at \$30 per year (1st Class mailing in USA) or \$40 per year (non-USA).....\$ _____

Contributing membership at \$35 per year, to help support KL&L(1st Class mailing in USA)..... \$ _____

Additional Donation.....\$ _____

Enclosed is my check / money order payable to Key Lock & Lantern, Inc. for.....\$ _____

Membership in KL&L includes 4 issues of the printed magazine, special member rates for KL&L Convention registration, and access to "members only" content on the KL&L website. New members joining before September will receive all previously published magazines for the year, and will be due for renewal in the following January. New members joining in September or later will have their dues applied to the next membership period, beginning with the Jan/Feb/Mar issue, unless otherwise requested.