



KEY LOCK & LANTERN NEWS



Mar/Apr 2023

Issue No.73

The Bi-Monthly Digital Supplement to Key Lock & Lantern Magazine



**2023 Key Lock &
Lantern Convention
Event Schedule**

**Winter Hobby
Show Report**

**Railroad Museum &
Preservation News**



KEY LOCK & LANTERN NEWS



The Bi-Monthly Digital Supplement to Key Lock & Lantern Magazine
WWW.KLNL.ORG

March/April 2023 **Issue #73**

From the President's Desk	3
Railroad Event Calendar.....	3
Key Lock & Lantern Convention.....	4
Railroad Hobby Show Report.....	6
National Railroad Museum Exhibit.....	8
Genesee Valley Transportation to Buy Alco PA.....	10
National Transportation Museum Trolley Rides.....	12
KL&L Convention Train Excursion.....	15
KL&L Transportation History Expo.....	16
KL&L Convention Programs.....	18
KL&L Convention Hotel Rates.....	20
KL&L Annual Meeting.....	21

KL&L News Editor.....David Hamilton
Send News to: transportsim@aol.com

The Key, Lock & Lantern News is published bi-monthly as a digital supplement to the quarterly Key, Lock & Lantern magazine. Recipients may repost or forward complete and unmodified copies of this newsletter to other hobbyists and websites, but its content may not otherwise be copied or distributed without the permission of the KL&L Board of Trustees. Copyrights are held by the respective authors and photographers. Excerpts of news items may be published with the credit line "Key, Lock & Lantern News"

Annual membership dues for Key, Lock & Lantern are \$30 for residents of the USA, and \$40 for outside of the USA (by money order or electronic payment in US funds). Members receive four issues of the quarterly KL&L magazine, delivered via first class mail. Memberships for additional family members are \$5 each (only one magazine is sent per family). Applications for membership & address changes should be forwarded to the VP-Membership at the e-mail address listed at right. Online membership forms and dues payment via Paypal are available at www.klnl.org.

Contributions of articles, photos, and news may be forwarded to the editor at the e-mail address listed at right. Hard copy articles should be written on 8 1/2 x 11" paper, and typed or neatly printed. Photos should be sent with a caption card attached which includes the contributor's name, phone number, and description. Photocopies of advertising and supply catalogs are acceptable. The submission of material in digital format is preferred, with text files in DOC, TXT, or PDF format, and images in JPG, TIF, BMP or GIF format. Digital files may be sent by e-mail or on a computer CD or flash drive. Please contact the editor regarding optimum file sizes and formats.

By submitting material to Key, Lock & Lantern, the contributor grants permission for use in any edition of the KL&L magazine, digital newsletter, websites, and other publications. All material will be retained by KL&L for future use, unless the contributor specifically requests that it be returned, and includes a suitable, self-addressed, stamped envelope. Current deadlines are listed in the Key, Lock & Lantern Advertising Guide, which is available on the KL&L website at www.klnl.org, or by contacting the editor.

Key, Lock & Lantern

A non-profit membership corporation dedicated to the preservation of transportation history and railroad memorabilia

The mission of Key, Lock & Lantern is to gather and publish information on the history of the transportation industry, and to support the preservation of railroad artifacts. KL&L members have an interest in all aspects of railroad & transportation history, from research and preservation projects to the conservation and restoration of all types of historical memorabilia. Originally formed in 1966, Key, Lock & Lantern, Inc. was officially incorporated in 1988 as a non-profit, educational, membership corporation in the State of New Jersey, under the provisions of Section 501(c)(3) of the United States Internal Revenue Code. Membership is open to anyone with an interest in transportation history and in achieving the goals of the organization.

Officers & Trustees

Chairman of the Board

John Brainard
j944wb@aol.com

President & Editor

David Hamilton
transportsim@aol.com

VP- Membership / Treasurer

Marie Brainard
j944wb@aol.com

Secretary / Counsel

Jeremy Tuke

Chaplain / Sgt at Arms

Chip Greiner

Historian

Peter Gores

Trustees at Large

Lyman Gray, Sam Lombardi, Joel Shaw, Sam Ferrara, Phil Simms, Leonard Gordy, Bob Lipman, Randy Bushart, William Sternitzke, Bill Roberts, Bob Myers, Joey Senese, Matthew Bushart, Michael Decker

www.klnl.org



For Current News
"Like" KL&L on

facebook

From the President's Desk.....

Despite a busy work schedule, I had the opportunity to go to a couple of railroad hobby shows this winter, including the big show in West Springfield, MA. Most attendees at these shows are looking for discount model railroad equipment, souvenirs, and books, but tables of railroadians usually get their attention for a few minutes. This year, several KL&L members reported that they had very good sales at most of the hobby shows. That is certainly good news!

On the opposite end of the spectrum is the annual KL&L Convention, where almost everyone is looking for original railroad memorabilia. The crowd may be smaller, but there is usually something for everyone at the show. And, unlike the big hobby shows, you don't have to walk through row after row of models to find that one table of memorabilia. That leaves more time to relax and visit with other railroad history buffs and collectors.

The final details of this year's convention in Carbondale are falling into place, and I'm certainly looking forward to the many great activities that we have lined up. If you have never been to a KL&L Convention before (or haven't gone for a number of years), I would encourage you to come this year and check it out. Between the train ride, after-dinner programs, and hanging out telling railroad stories in the hotel courtyard, it is so much more than just a show.

If you can't get out to the KL&L convention and other meetings, or the general hobby shows, there is always the option of bidding in online auctions. I've left bids in a few of those over the last several weeks, and the prices on some artifacts have gone pretty wild. The good old days of something slipping through the cracks are pretty much over. If inflation is having an impact on people's budgets, I certainly don't see it!

In some of the recent auctions, memorabilia from what I would consider to be the modern era brought higher prices than some older artifacts. I suppose this may be a sign that there is a new wave of younger collectors coming into the market and buying what they are most interested in. It might be time to go to the storage unit and bring out some of the things that I rescued from the dumpster at the beginning of my career.

As always, thanks for everyone's support of Key Lock & Lantern, and I hope to see you at the convention in May. If you are thinking of attending, make your reservations soon, before the hotel releases any remaining rooms. It will once again be an event not to miss!

Dave Hamilton

KL&L President & Editor



Railroad Event Calendar



Upcoming historical society conventions, special events, railroadians shows & auctions. Listings subject to change. Check show web sites before traveling and visit www.klnl.org for updates. See submission guidelines at the end of the calendar.

Look for Advertisements in this Issue & on the Key Lock & Lantern Website for [Events Shown in Blue](#)

- Mar 4** **Perris, CA** - Southern California Railway Museum Railroadiana Swap Meet.
Info: <https://socalrailway.org>.
- Mar 5** **Clark, NJ** - Jersey Central Chapter NRHS Train Show.
Info: www.jcrhs.org.
- Mar 9-10** **Lafayette, IN** - Railroadiana Consignment Auction. Rail & Road Auctions.
Info: <https://rarauctions.com>
- Mar 11** **Harrisburg, PA** - Harrisburg NRHS Railroad Show & Collectors Market.
Info: <https://www.harrisburgnrhs.org/>
- Mar 11** **Lone Jack, MO** - Railroadiana Auction by Soulis Auctions.
Info: www.soulisauctions.com.
- Mar 18** **Albany, NY** - TTOS Albany Train Show.
Information: <https://www.albanypcc.com/event/train-show-1-2/>
- Mar 18** **Corvallis, OR** - Winterail Photo Expo & Railroad Collectibles Sale.
Info: www.winterail.com.
- Mar 18-19** **Painesville, OH** - Painesville Railroad Museum Rail Fest.
Info: www.painesvillerrailroadmuseum.org.

Continued on Page 23

Front Cover: Delaware-Lackawanna's Lehigh Valley #414 will power the KL&L Convention excursion. Photo by Dave Hamilton.

Registration is Open for the 2023 Key Lock & Lantern Convention



Online registration is now open for the 2023 Key Lock & Lantern Convention, to be held May 11-14th at the Hotel Anthracite in downtown Carbondale, PA. All transportation history buffs and collectors are invited to attend the many events that are scheduled for the weekend.

Informal activities begin on Thursday evening, May 11th, when most attendees begin to arrive. Pre-show railroadiana trading will take place in the hotel's Canary Lounge, and

Central Railroad of New Jersey #1554 & Lehigh Valley #414 are the planned power for the KL&L Convention excursion train from Carbondale on Friday, May 12th.

many KL&L members gather in the adjoining bar to catch up with old friends and make new ones. The convention schedule offers plenty of opportunities such as this to relax and discuss transportation and industrial history and current preservation efforts. While it is not the biggest event for railroad historians, it is certainly one of the best for making contacts with fellow collectors, railroad preservationists, and other organizations.

On Friday, May 12th, a special Key Lock & Lantern train provided by the Delaware-Lackawanna Railroad will depart from the Carbondale station at 10am for a trip over the old D&H Penn Division line to Scranton and return. A layover in Scranton is planned for lunch and a to visit Steamtown, the Marketplace at Steamtown, or the Trolley Museum.

Dinner on Friday evening is on your own, and the KL&L board will hold its annual meeting. If there is any business that members wish to have considered by the board, please forward it to KL&L president Dave Hamilton prior to May 1st. After dinner, more pre-show trading will take place in the Canary Lounge (or in the hotel courtyard, weather permitting).



Some of the many varieties of railroadiana offered for sale at the 2022 Key Lock & Lantern Convention.

Continued on Page 14

Railroadiana Auctions - Spring & Fall - Brookline, NH

Railroadiana Consignment Auctions Held Each Spring & Fall

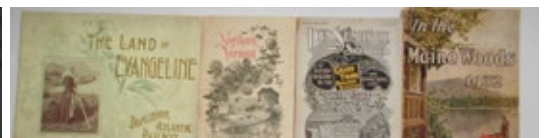
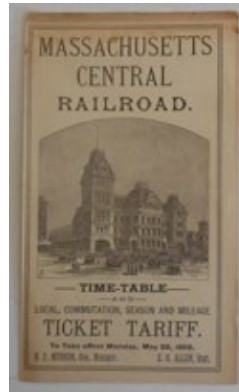
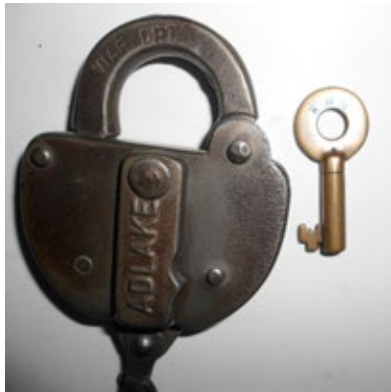
Brookline Auction Gallery LLC - 32 Proctor Hill Rd, Brookline, NH 03033

Auction information including photos: www.tagtown.net

Scott Czaja - Sales Manager (978) 779-2904

Next Sale on April 21-22, 2023

Featuring More From Phil Simms And Other Prominent Collections



Now on LiveAuctioneers.com - We also accept absentee bids via: e-mail & mail
Quality consignments are welcome for future sales - call Scott or email: sczaja@hotmail.com

Memorabilia is Popular at the Winter Railroad Hobby Shows

For collectors of railroad memorabilia, model train and hobby shows can be a roll of the dice when it comes to finding something good. Selling can be an even less certain proposition, with many attendees at these events primarily interested in the model train layouts.

It is therefore encouraging that several KL&L members who offered railroadiana at some of this winter's hobby shows reported excellent sales of both common and harder to find memorabilia. Many vendors at this year's events were able to sell a little bit of everything, including some higher priced items that have been making the rounds all season.

There are still a number of late winter and early spring shows scheduled for the coming weeks. Even if there aren't many people interested in buying \$2000 lanterns at these events, this seems to be a good year to bring some of those lower and mid-range artifacts out to introduce the collecting side of the hobby to new participants. Check the KL&L event schedule at www.klnl.org for upcoming shows!



KL&L member Len Gordy assists a customer with a sale at the Amherst Railway Society show in Springfield, MA.



Railroad hobby shows are a great way to introduce the collecting aspect of the hobby to new participants.



The Penn Central Railroad Historical Society table at the Great Train Extravaganza in Albany, NY.



Our friends at the Adirondack Railroad spread the word about their expanded operations at Springfield.



Time's Treasures offered railroadiana at the Albany show. They will be exhibiting at the 2023 KL&L Convention.



RAILROAD MEMORIES

AUCTION 115 HIGHLIGHTS



*Southern Pacific Adams & Westlake with
Amber Cast SP&W R.R. Globe: \$14,250*



*Union Pacific Denver & Gulf
Railway by Union Lock &
Hardware: \$11,750*



*Northern Pacific by SG&L with Green
Cast N.P.R.R. Globe: \$5,000*



*Union Pacific Denver & Gulf
Railway Switch Key: \$8,750*



*Great Northern Railway Porcelain
24" Logo Sign: \$1,350*



*SP&S / OERY / G.N.RY Dater Die from
Portland, Oregon: \$1,000*



*AT&SF & Colorado Midland 1894
Joint Annual Pass: \$1,900*



*CM&STP RY Cooke Works
Builders Plate: \$2,300*



*Chicago & Northwestern "Lunch Room"
Bowl by Shenango: \$975*

www.railroadmemories.com

Information about consigning: 303-569-5189 or railroadmemories@gmail.com

National Railroad Museum's New "Rail Ties" Exhibition Highlights Stories Behind Artifacts

The National Railroad Museum in Green Bay, WI is one of the oldest railroad museums in the United States, with a collection of over 70 pieces of rolling stock and over 100,000 railroad artifacts. Union Pacific "Big Boy" #4017, a Pennsylvania RR GG-1, and the General Motors Aerotrains are among the significant locomotives in the collection, which also includes diesels, steam engines, coaches and freight cars.

Each year, a temporary exhibition highlights an element of the museum's collection, and the 2023 exhibit opened on February 4th. "Rail Ties: Railroad Stories The Link Our Community" showcases objects from the museum and also artifacts loaned to the museum, linking them with the stories behind them. Housed in the museum's Fuller Hall Gallery, entry is included with regular admission.

According to the museum, "by celebrating the stories of people who owned and used these objects, we can learn about the development of our country and its culture to gain a better understanding and appreciation for what has happened." The museum plans to continue gathering stories throughout the year, and would like to hear from railroaders or their family members. Contact curator Daniel Liedtke at dliedtke@nationalrrmuseum.org for more information.

For information about visiting the National Railroad Museum, and current hours and events, visit their website at <https://nationalrrmuseum.org>. Photos courtesy of National Railroad Museum.



KEY LOCK & LANTERN

Can Help Promote Your
Auction, Show or Event

Contact KL&L at transportsim@aol.com

JM HOBBY SUPPLY & RAILROAD ARTIFACTS

Railroadiana Auctions

Next Auction: May, 2023

For information and links to catalogs visit: www.jmhobbysupply.com

Highlights of Recent Sales



Chicago & Northwestern
Railroad Depot Sign: \$800



St. Paul & Duluth
Lock: \$1500



NJ Transit
Detective: \$380



Nathan Air Chime Locomotive
Horn: \$2200



Chicago Milwaukee &
St. Paul Clock: \$2050



DM&N Roundhouse
Telephone: \$1100



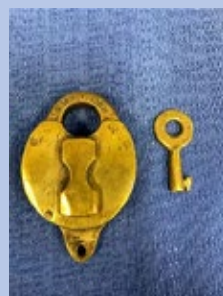
C&NW Railroad Milk
Can: \$1000



Great Northern Railway
Locomotive Herald: \$1250



Great Northern Blueprints
& Ephemera: \$2350



Great Northern
Lock & Key: \$550



Duluth & Iron
Range: \$1000



C&O Chessie
Calendar: \$340



DM&IR Marker
Lamp: \$1000

Join the JM Hobby Supply Group on Facebook for News & Announcements!

Now taking consignments for 2023 auctions! We offer the lowest fees of any major railroad auction service!
Call us at 920-857-9670 or email jmhobbysupplyandrrartifacts@gmail.com for information.

Genesee Valley Transportation to Purchase Alco PA Locomotive for Excursion Service

Genesee Valley Transportation has agreed to purchase rail preservationist Doyle McCormack's ALCO Nickel Plate PA #190. GVT Rail President Michael D. Thomas and Mr. McCormack met at the Oregon Rail Heritage Foundation museum in Portland to celebrate the historic arrangement on Wednesday, March 1st. For the first time in more than four decades, an ALCO PA will return to home rails and be restored for main line passenger excursions.

For ALCO, the PA locomotive was their signature contribution to the booming 'streamliner' passenger train equipment market following World War II. Built in December of 1948, "Nickel Plate 190" started life as Santa Fe no. 62L, one of twenty-eight such 'A' units ordered by the Atchison, Topeka & Santa Fe from ALCO's Schenectady, NY plant. After two decades in passenger service for the Santa Fe, the 62L and three sister units were put on the path to long-term preservation when the Santa Fe sold them to the Delaware & Hudson Railroad, where the PA was given road-number 18.

Under D&H President C. Bruce Sterzing, the PA's archetypal "Beauty Queen of Diesels" moniker was certified in full-color Kodachrome via a decade of service on crack D&H passenger trains such as The Laurentian and The Adirondack, as well as numerous excursion specials and business trains throughout the northeastern US. The 18 and her sister PAs made countless trips over the D&H Pennsylvania Division, the Scranton-Carbondale segment of which is now operated by GVT's Delaware Lackawanna Railroad on behalf of the Pennsylvania Northeast Regional Railroad Authority.

In 1975, all four D&H ALCO PA locomotives were sent to Morrison-Knudsen, Co., in Boise, Idaho, and completely rebuilt for the restart of passenger service from New York City to Montreal on the New York State-sponsored Adirondack. The PAs handled the D&H leg of the trip (Albany-Montreal) until Amtrak's 1976 purchase of RTL Turboliner trainsets. This spelled the end of D&H operation of The Adirondack, and the PAs entered a brief period of freight service on the D&H, followed by an equally brief showing in commuter train service for the Metropolitan Boston Transit Authority. In 1978, all four remaining PAs were sold to the Mexican National Railways and by 1981, all were retired from service to museums south of the border.

Then at the turn of a new century, queue the visionary efforts of noted railway preservationist Doyle McCormack. Working with the Mexican and U.S. governments and the Smithsonian Institution, two of the four ALCO PAs returned to the United States in 2000, though all that was left at that point were the empty shells of what once was. One of the PA shells made its way to the Museum of the American Railroad in Texas, while Mr. McCormack spent the past two decades restoring the primary mechanical functions and aesthetic elements of his PA locomotive. His master stroke—a tribute paint scheme to Nickel Plate Road ALCO PA #190, the first



locomotive that Mr. McCormack rode in as a boy growing up in Ohio. "It's been a long road and a remarkable story for this locomotive," Mr. McCormack said. "We couldn't be happier than to see NKP 190 go to a family of railroads like GVT Rail."

"Whether it's put on display or in operation, NKP 190 will serve as a significant tourism draw for Scranton and all of Northeastern Pennsylvania," said Congressman Matt Cartwright. "In addition to boosting our local economy, this significant vestige of Pennsylvania history will remind us of our nation's industrial past while serving as a beacon for the return of passenger rail service to our region."

In the coming weeks, the PA will make the transcontinental journey from Oregon to Scranton. As the foremost proprietor and user of ALCO locomotives in the world, GVT's crack team of locomotive mechanics at the Von Storch Locomotive Shops will evaluate NKP 190's current condition and scope out what work remains to return the locomotive to service leading office car specials, railfan 'ramblers' and additional special event passenger train excursions.

"The current GVT leadership team has been making the case for acquiring this one-of-a-kind gem for half a decade now," said Charlie Monte Verde, GVT Rail's Vice President of Strategic Planning. "We appreciate Mr. McCormack's efforts and vision in returning the locomotive to the U.S. and are honored that he chose 'The ALCO Road' for the PA's permanent home. We look forward to a day in the very near future when the PA makes her first mainline run in more than four decades, on home rails, with Mr. McCormack at the throttle."

Don't miss a mile of the cross-country journey of ALCO PA NKP 190. Head over to facebook.com/GVTRailCo and click 'Like' to follow the iconic PA back to home rails. *News & photo courtesy of Genesee Valley Transportation.*

Rail & Road Railroadiana Online Auctions

March 9th & 10th, 2023
May 4th & 5th, 2023



Rail & Road Auctions presents our Late Winter and Spring 2023 Transportation Auctions. Both sales feature a quality selection of Railroadiana & Transportation Memorabilia & Collectibles.

View the catalogs on our website & register to bid.
Rail & Road offers online, absentee, and telephone bidding.



RAIL & ROAD AUCTIONS

WWW.BIDRAR.COM

765-412-7926



Trolley Rides Resume for the 2023 Season at the National Museum of Transportation

Trolley rides at the National Museum of Transportation in St. Louis will resume for the season on April 1st. Trolleys depart on the hour and at 20-minute intervals between 10am and 2pm on Thursday through Sunday, with boarding at the Roberts Pavilion platform. The trolley rides are included with the price of admission.

Exhibits at the museum include aircraft, boats, automobiles, and of course trains. Rolling stock includes a Union Pacific Big Boy, early General Motors diesels, an 1850's Boston & Providence 4-4-0 steam locomotive, and a large collection of steam locomotives representing railroads from all over North America. Also included in the collection are a large number of freight and passenger cars, cabooses, work equipment, and transit cars. With almost 200 exhibits, it is considered the largest collection of transportation vehicles in the world.

Located on Barrett Station Road in St. Louis, MO, the National Museum of Transportation is open year round, with both indoor and outdoor exhibits in a sprawling park. For more information about the train show, and the museum in general, visit their website at <https://tnmot.org>. *Photos by the National Museum of Transportation.*



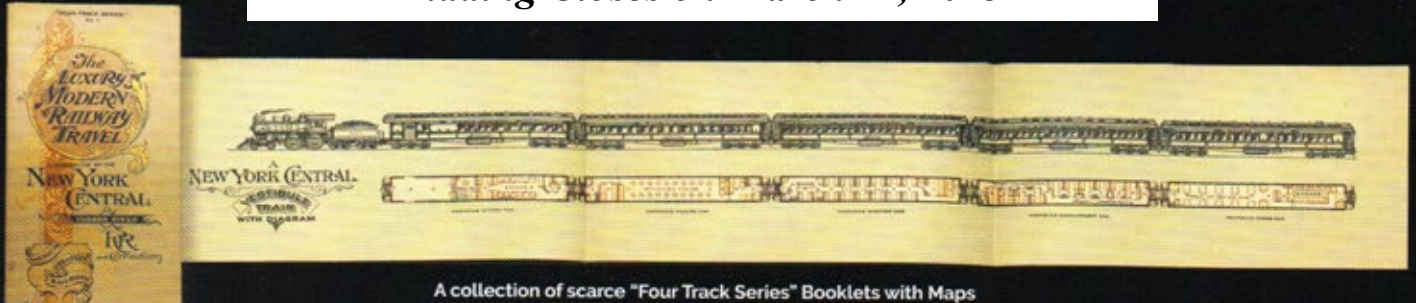
KEY LOCK & LANTERN

Can Help Promote Your
Auction, Show or Event
Contact KL&L at transportsim@aol.com

Rare Ephemera From the Ed McHugh Estate Collection

Online Auction 15% Buyer's Premium

Bidding Closes on March 11, 2023



A collection of scarce "Four Track Series" Booklets with Maps



Four Track Series No. 10, 1903



Unusual NYC 20th Century Limited Ephemera



Union Pacific Sights and Scenes, 1892



A Collection of Olin Wheeler's "Wonderland" Promotional Books for Northern Pacific Railroad Beginning with Volume One, 1886



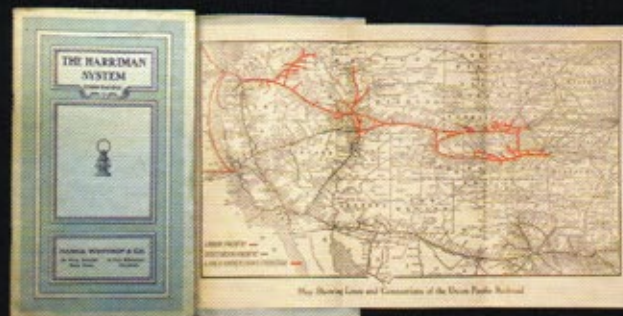
Very Rare 1876 Pocket Map of the Trans Continental Route from Chicago to California along the Central Pacific, Union Pacific and Rock Island Railroads. Printed in 1876, this is one of Rand McNally's earliest maps and one of only three examples offered for sale in the last 30 years.



SOULIS
AUCTIONS

www.SoulisAuctions.com

816.697.3830



A Rare Union Pacific Harriman System Booklet with Map

Key Lock & Lantern Convention

Continued from Page 4

The main event of the convention is the Transportation History Exposition, which opens at 9am on Saturday, May 13th, in the “Gravity Hall” at the Hotel Anthracite. The show is a combination of exhibits about transportation and industrial history, and sellers of authentic memorabilia.

The annual meeting of Key Lock & Lantern will be held in the afternoon, followed by the organization’s annual fund raiser “auction.” At this lighthearted event, a variety of donated artifacts (usually including some good ones) are sold to the highest bidder, with all proceeds going to support KL&L.

In the evening, a buffet dinner will be served, with seating beginning at 5pm. Following dinner, transportation history programs will be presented, first in the Gravity Hall, and then moving to the Canary Lounge after 9pm. The schedule for Sunday has been left open for convention attendees to visit any of the many historic sites in the region, or do some modern train chasing.

For more information and online registration, visit the Key Lock & Lantern website at www.klnl.org.



The canary in the Canary Lounge is nailed to its perch because it is in fact an ex-canary, it is bereft of life.



Pre-show trading and socializing takes place in the Hotel Anthracite courtyard and the Canary Lounge.



The pre-show trading sessions on Thursday and Friday evenings provide a head start on the competition.



**For Current News
& Announcements,
Follow Key Lock &
Lantern on Facebook.**

Key Lock & Lantern Excursion Train to Run Over the Former D&H Penn Division

On Friday, May 12, 2023, a special Key Lock & Lantern excursion train will operate over the Delaware-Lackawanna Railroad's former Delaware & Hudson Railroad Penn Division line from Carbondale to Scranton, PA. D-L parent Genesee Valley Transportation is once again graciously providing its inspection train, consisting of an EL Comet coach, EL business car #2, and an original DL&W caboose.

The train will board at Carbondale Station at 9:45 AM for a 10:00 AM departure. After traversing the last remaining segment of the D&H Penn Division, the train will head up the connecting track to DL&W Bridge 60 tower at Scranton. Arriving at approximately 11:30 AM, passengers will be able to disembark at the platform at Steamtown, and take photos of the train as the engines run around at Bridge 60.

There will be an approximately 2-hour layover in Scranton to allow passengers to visit Steamtown (free admission) or the Electric City Trolley Museum (admission is extra), and to eat lunch at the Marketplace at Steamtown. There are also picnic tables located near the Union Pacific Big Boy, which has recently had its cosmetic restoration touched up and now resides across the parking lot from its former location.

Before departing from Scranton, the train will head east up the Lackawanna Railroad mainline to the Nay Aug Tunnel, for a photo runby. Arrival back in Carbondale will be around 3:30 PM. The planned power for the train is Lehigh Valley #414 and Central Railroad of New Jersey #1554, both part of the GVT's extensive fleet of ALCO products.

The business car and caboose are both sold out, but there are still seats available in the Comet coach. Please note that convention registration is required in addition to purchasing train tickets, but registration is open to non-members. Visit the Key Lock & Lantern website at www.klnl.org for more information and online registration.



Alco locomotives from anthracite railroads are lined up as power for the KL&L Convention excursion train.



Erie Lackawanna business car #2 will once again carry the markers on the Key Lock & Lantern excursion train.



Passengers on the 2022 Key Lock & Lantern excursion enjoy the view from the back platform of the caboose.



A photo stop at the DL&W Nay Aug Tunnel is planned for this year's Key Lock & Lantern Convention excursion.

Key Lock & Lantern Transportation History Exposition to Feature Exhibits & Sales

On May 13th, the Gravity Hall banquet room at Carbondale's Hotel Anthracite will once again be filled with transportation history exhibits and tables of authentic railroad memorabilia for sale or trade. The Transportation History Exposition is the "main event" of the Key Lock & Lantern Convention, providing members with a venue to showcase interesting artifacts from their collections and the results of their research. Over forty tables have already been reserved in the 6000 square foot facility, and this year's event promises to be another exciting one.

KL&L members competing for the "Best in Show" award have presented a variety of exhibits in recent years, with topics ranging from lantern manufacturers to local railroad history. Some of the displays at recent shows included: the Nail City Lantern Company, Delaware Lackawanna & Western Railroad memorabilia, early Amtrak timetables,



In addition to the displays, most exhibitors also offer authentic memorabilia for sale or trade. A collector will find every type of railroadiana at the show, from hardware to paper and everything in between. A nice selection of lanterns (including non-railroad models) is usually offered by several collectors, along with globes, founts, and other parts. Several exhibitors are experts at lantern restoration, and are always happy to give advice, or to offer their repair services. Lock and key collectors will find plenty of scarce examples for their collections, and can exchange "want lists" with others who are looking for similar artifacts.

A growing number of timetable and paper collectors have been participating in the show in recent years, with several members of the National Association of Timetable Collectors scheduled to exhibit this year. From rare 19th century employee timetables to modern public timetables in the "dollar bin," there is something available to fit every ephemera collector's budget. A variety of used books on transportation and industrial history subjects are also usually offered for sale by various exhibitors.



passes from New York & Pennsylvania railroads of the 1850-1890 period, railroad uniform badges, and an original CTC machine panel from the New York Central Railroad. The Erie Railroad, the Northern Central Railroad, the Delaware & Hudson Canal Company, the Chicago & Alton Railroad, Taylor Manufacturing Company, street & post lamps, railroad police badges, and lantern patent models have been featured in recent years.



Continued on Page 15

Transportation History Exposition

Continued from Page 16

Several historical societies are also expected to have tables at the show, offering books and memorabilia for sale, and providing information about their group's activities. The KL&L Convention is an excellent event for networking with fellow historians, and members of these groups are looking forward to meeting collectors with similar interests.

The annual Key Lock & Lantern fundraiser sale will take place in the afternoon, with several tables of donated memorabilia sold to the highest bidder. All proceeds from this event are used to keep registration fees at a reasonable level, with the convention operating on a break-even basis every year as a result. There is always some interesting (and sometimes scarce) memorabilia to buy, and it is a great opportunity to pass along something that is no longer needed in a collection, while supporting a good cause.



Advance registration for the Key Lock & Lantern Convention, which includes admission to the Transportation History Exposition, is still open on the KL&L website at www.klnl.org. The registration fee is only \$5 per person for members, and \$15 per person for non-members, with an early admission pass available for an additional \$15 fee. The early admission pass allows for entry to the exhibit hall during setup hours of 7:30am to 9:00am, giving a head start

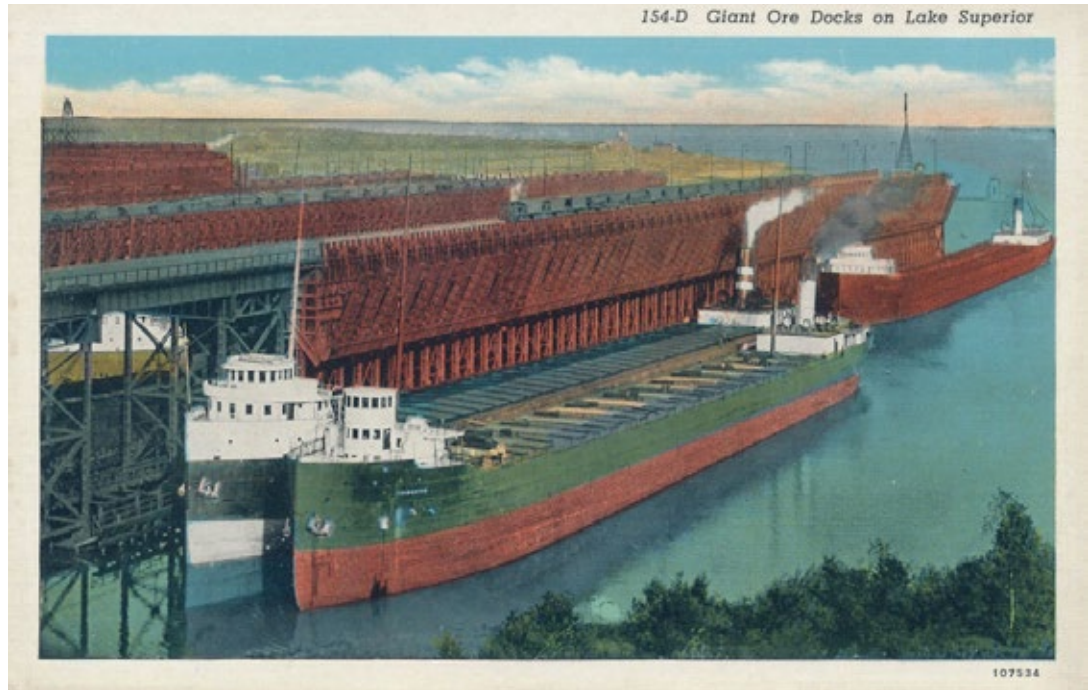


2023 KL&L Convention Banquet and Transportation History Programs

The 2023 Key Lock & Lantern Convention banquet dinner will be held on Saturday, May 13th, in the Gravity Hall at the Hotel Anthracite, and will once again feature railroad history programs by convention participants.

The feature program following this year's banquet will be presented by KL&L member John DeBeck, who in addition to his interest in railroad history and memorabilia, is a well known researcher of Great Lakes shipwrecks. A long-time women's basketball coach, in recent years DeBeck established his own model railroad parts company, which also offers railroadiana for sale. Last year, JM Hobby Supply & Railroad Artifacts also began managing railroadiana auctions (see their ad on page 9 for more information).

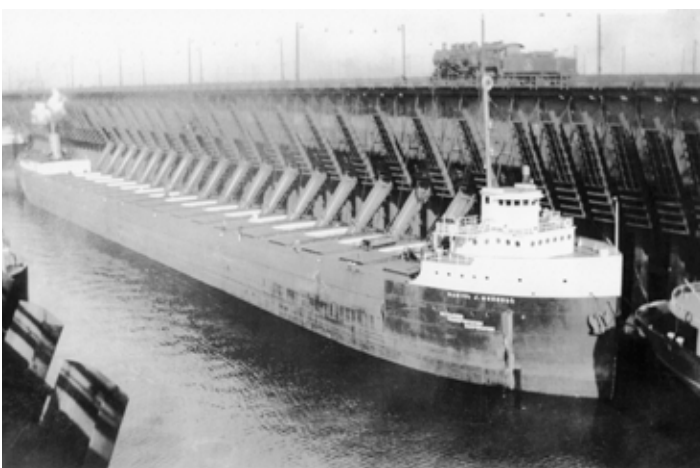
For his presentation, DeBeck will talk about iron ore mining in upper Minnesota and the upper peninsula of Michigan, and the role of the railroads in bringing the iron ore or taconite pellets from the mine to the dock, as well as how they were shipped across the Great Lakes. He also plans to bring a display of items from these railroads.



Tying in with this, one of DeBeck's closest friends for 33 years, Dennis Hale, was the lone survivor of the third largest shipwreck on the Great Lakes, the DANIEL J MORRELL, which broke in two on Lake Huron on November 29, 1966 on its way to pick up a load of taconite. Using photos, charts, and other items, DeBeck will show the loading of ore on the MORRELL at the railroad ore docks, as well as underwater footage of how his research team rewrote history about the cause of the wreck in 2020.

His team united the 29 surviving families for the first time ever, 55 years later, at the opening of a new MORRELL exhibit he and his staff helped create at the Great Lakes Shipwreck Museum in Whitefish Point, Michigan in 2021. His new best-selling book, *The DANIEL J MORRELL, Lost, But No Longer Forgotten*, will be available at the event, as well as free video footage of the wreck and research dives for each person buying a book.

DeBeck will do a two part presentation, with a short intermission, following the KL&L dinner, and allow for questions and answers at the end (and he promises to be dynamic, funny, and entertaining so you don't fall asleep!!). Time permitting, he will also try to answer questions about railroad artifact auctions that attendees may have, and will also have a booth at the KL&L show where he can meet and chat with railroad enthusiasts, potential auction clients, or even vintage motorcycle enthusiasts! He will also be more than happy to autograph a MORRELL book.



The presentations at the KL&L banquet will feature something a little different this year: a program about the shipment of ore by rail and Great Lakes boats.

Continued on Page 19

The popular “open projector night” for KL&L members to present photos that they have taken or material from their collections will also return this year. This part of the program will be held in the Canary Lounge this year, with an HDMI cable hookup to the large-screen television.

Anyone who is interested in showing up to 20 minutes of digital material should contact Dave Hamilton at transportsim@aol.com. We will have a laptop computer capable of showing individual photo files as a slide show, movies in most file formats, and PowerPoint, or members can hook their computers up to the television.

The Gravity Hall will be open at 5:00pm for a pre-dinner social hour, and the buffet line will start at 5:30pm. Convention registrants who are not planning to attend the banquet are welcome to attend the programs after dinner; admission is included in the convention registration fee. Programs will begin around 6:30pm. To register for the banquet, visit the Key Lock & Lantern website at www.klnl.org and watch for program updates on the KL&L Facebook page.

Photos from Last Year's Programs



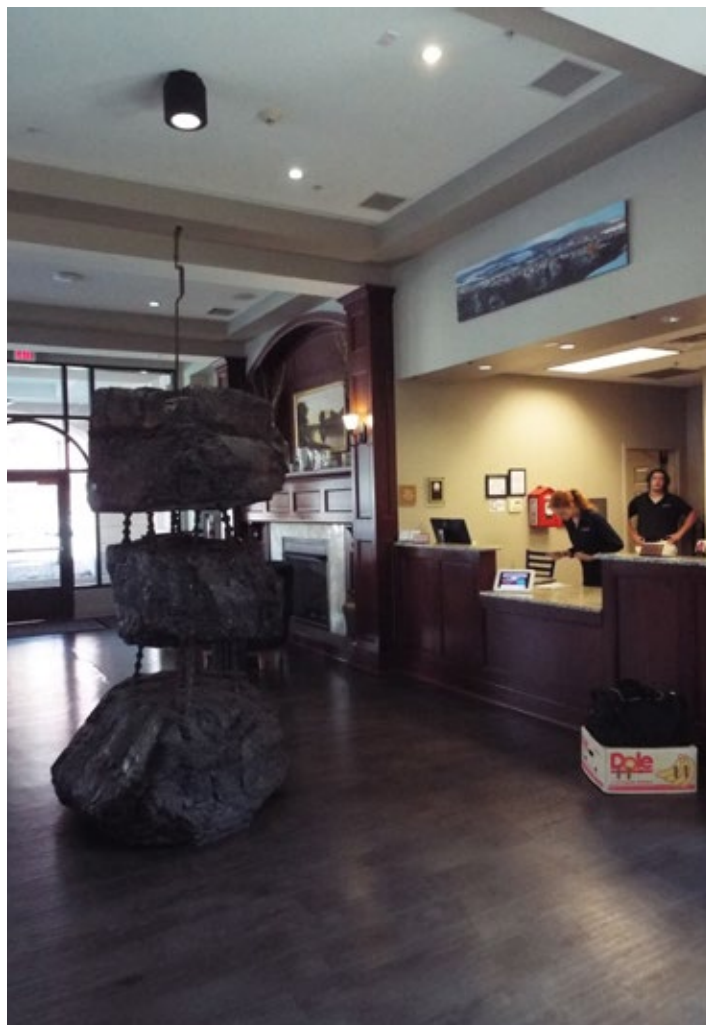
The KL&L Convention banquet will be held on Saturday night, followed by railroad history presentations.



Hotel Anthracite Offers Special Rate for 2023 Key Lock & Lantern Convention

The Hotel Anthracite is offering a special room rate for the Key Lock & Lantern Convention of \$109 per night plus tax, which comes out to about \$129 per night total. This rate applies to both King and Queen bed rooms, and amounts to a huge savings over the regular King rate, and is competitive with the deep discount deals offered by travel websites for the Queen rooms.

To get this rate, the front desk must be called directly at (570) 536-6020 and the Key, Lock & Lantern rate must be requested. The hotel will only be holding the KL&L block of rooms until March 12th, so make your reservations early to avoid disappointment! If you call and there are no longer any rooms available at the KL&L rate, contact Marie Brainard at j944wb@aol.com, and she will attempt to have additional rooms added to the block. However, there is no guarantee that rooms will be available, so once again, make your reservations now!



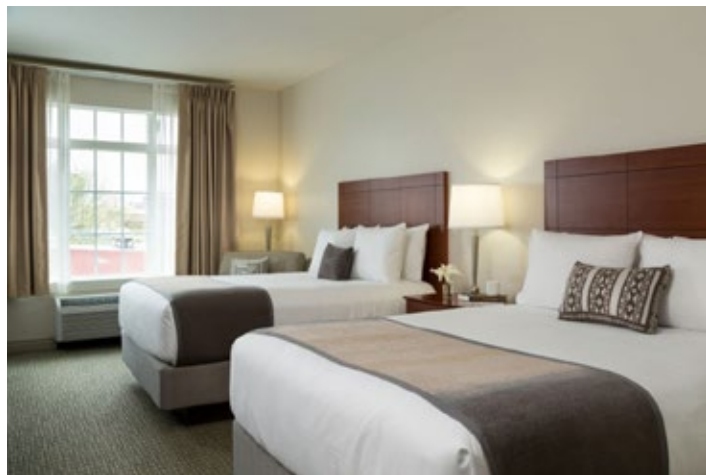
Yes, those are really huge chunks of anthracite coal on display in the Hotel Anthracite lobby! Photo by Dave Hamilton. Other photos courtesy of the Hotel Anthracite.



The Kol Steak House in the Hotel Anthracite is a popular local destination in addition to serving hotel guests.



The Kol Steak House bar is a popular place for Key Lock & Lantern members to relax in between events.



The standard Queen room at the Hotel Anthracite provides clean, comfortable accommodations for guests.

2023 Annual Membership Meeting of Key Lock & Lantern to be Held in Carbondale

The annual membership meeting of Key Lock & Lantern, Inc. will be held at 2:00PM on Saturday, May 13, 2023, at the Hotel Anthracite, 25 South Main Street, Carbondale, PA, 18407. All current members are invited to attend.

The following incumbent officers are automatically renominated for their positions: John Brainard - Chairman of the Board, David Hamilton - President, Marie Brainard - Treasurer & VP-Membership, Chip Greiner - Chaplain & Sergeant at Arms, Jeremy Tuke - Secretary & Counsel, Pete Gores - Historian.

The following incumbents are renominated for Trustee at Large positions: Lyman Gray, Sam Lombardi, Joel Shaw, Sam Ferrara, Phil Simms, Leonard Gordy, Bob Lipman, Randy Bushart, William Sternitzke, Bill Roberts, Bob Myers, Joey Senese, Michael Decker, and Matthew Bushart.

If the officer positions are not contested, and the number of nominated Trustees at Large does not exceed the total number of seats on the board, elections are not required and will not be held. The incumbent officers and trustees will be

considered re-elected by acclamation.

The minutes of the 2022 membership and board meetings, along with the Treasurer's annual report will be presented to the KL&L Board of Trustees on May 12, 2023, and will be available for inspection upon request at the annual meeting on May 13, 2023. Any member in good standing may also request a copy of these reports from KL&L President Dave Hamilton by email at transportsim@aol.com. A PDF copy of the reports will be sent upon request, following the meeting.

If any member has new business that they would like to be considered by the KL&L Board of Trustees, please forward it to KL&L President Dave Hamilton by May 1, 2023. If any member would like to present any new business at the 2022 membership meeting and is unable to attend the meeting in person, please forward it to KL&L President Dave Hamilton by May 1, 2023 and it will be presented on their behalf.

Please email Key Lock & Lantern President Dave Hamilton at transportsim@aol.com with any questions regarding the upcoming meeting.

Volunteers Needed to Assist with 2023 Key Lock & Lantern Convention Events

Members who have been attending the Key Lock & Lantern Convention for many years have no doubt noticed that the event has grown considerably in size recently. When the convention was in its final years in Albany, setup involved getting name tags and programs ready, and checking with the hotel to make sure the tables were all in place. Since then, we have added more extensive programs, train rides, early admissions, additional meals, and more tables.

During this period of growth, convention planning and execution has continued to be handled by John & Marie Brainard, with a little help from board members who have been pressed into service to assist with some tasks. With attendance now reaching all-time highs, the job of managing everything during the convention is becoming a challenge for the members who do most of the work.

To keep things running smoothly, KL&L is seeking a small group of volunteers to assist with various aspects of the convention. Some of the jobs that we could use help with include staffing the registration table, monitoring doors during setup, assisting members who need help loading, checking people in for events such as dinner, and serving as a car host on the train trip.

Most of these functions aren't all-day jobs, and even a half hour of volunteer time would make a huge difference. Those who volunteer to help with the registration table, monitoring



doors, and related tasks during setup would of course be admitted to the show during setup hours without paying the extra fee. Members who volunteer to work as a car host on the excursion would obviously ride the train at no charge.

If you are interested in volunteering to help out at this year's convention, please contact KL&L president Dave Hamilton at transportsim@aol.com.

The New York-Pennsylvania COLLECTOR

Living with Antiques, Art & Americana

A Monthly Publication Featuring News & Articles
About Antique Collecting & History



- Auction & Show Listings
- Club Meetings & Events
- Identification & Fakes
- Antique Restoration Tips
- Museums & Historic Sites
- Dealer & Flea Market Ads

Online Event Calendar
Online Show & Dealer Ads
Subscriptions
Advertising Information

www.nypa-collector.com

NYPACollector

Railroad Event Calendar

Continued from Page 2

- Mar 21-23** **Denver, PA** - Morphy Auctions Railroadiana & Petroliana Auction.
Info: www.morphyauctions.com.
- Mar 26** **Batavia, NY** - Great Batavia Train Show. Genesee Society of Model Engineers.
Info: www.gsme.org.
- Mar 26** **Kingston, NY** - Kingston Railroad Hobby Show.
Info: www.kingstontrainshow.com.
- Apr 1** **Deland, FL** - Golden Spike Enterprises Florida Rail Fair.
Info: www.gserr.com.
- Apr 1-2** **Denver, CO** - Rocky Mountain Train Show. Train Collectors Association.
Info: <http://rockymountaintrainshow.com>
- Apr 2** **Amsterdam, NY** - Rails Along the Mohawk Train Show
Info: www.ahts.org.
- Apr 2** **Monaca, PA** - Beaver County Model RR & Historical Society Train Sale
Info: www.bcmrr.railfan.net.
- Apr 2** **Toronto, ON** - Toronto Aviation & Airline Collectibles Show
Info: <https://torontoairlinershow.com/>
- Apr 8** **Columbus, OH** - Golden Spike Enterprises Buckeye Railroadiana Show.
Info: www.gserr.com.
- Apr 15-16** **Calgary, AB** - Calgary Super Train Railroad Show.
Info: www.supertrain.ca.
- Apr 15-16** **New Braunfels, TX** - New Braunfels Train Show.
Info: www.nbrm.org
- Apr 20-23** **Palestine, TX** - Katy Railroad Historical Society Convention.
Info: <http://katyrailroad.org>.
- Apr 21-22** **Brookline, NH** - Railroadiana Consignment Auction. Brookline Auction Gallery.
Info: www.tagtown.net.
- Apr 23** **Griffith, IN** - Blackhawk Chapter NRHS Swap Meet Railroadiana Show.
Info: www.blackhawknrhs.org
- Apr 29** **Albany, NY** - New York Central Historical Society Mini-Meet
Info: <https://nycshs.org/>.
- Apr 30** **Chicago, IL** - Chicago Railroad Memorabilia Show
Info: www.graylandstation.com.
- May TBA** **Luxemburg, WI** - JM Hobby Supply & Railroad Artifacts Railroadiana Auction.
Info: <http://www.jmhobbysupply.com>.
- May 4-5** **Lafayette, IN** - Railroadiana Consignment Auction. Rail & Road Auctions.
Info: <https://rarauctions.com>
- May 6-7** **Austin, TX** - Austin Area Train Show, Austin, Texas
Info: www.austinrailway.org.
- Apr 30** **Elk Grove Village, IL** - Chicago Airline Collectibles Show
Info: www.graylandstation.com.
- May 6-7** **Shelburne, VT** - Rutland Railroad Historical Society Convention
Info: <https://www.rutlandrailroad.org/>.
- May 11-14** **Carbondale, PA** - Key, Lock & Lantern Convention & Railroad History Expo.
Info: www.klnl.org.
- May 16-21** **Sparks, NV** - Railway & Locomotive Historical Society Convention
Info: <http://www.rlhs.org>.

Send listings to: transportsim@aol.com

There is no charge for calendar listings. Train shows must include dealers of authentic railroad memorabilia or related material, and auctions must include at least 20 lots of railroadiana. Other events must be directly related to railroad history (special exhibitions, lecture programs, conventions, limited excursions, etc.). Regular monthly group meetings, model train meets & scheduled tourist train trips are not eligible, unless related to a special event. Events are listed space permitting, at the editor's discretion. Listings are subject to error or change. Always check show web sites before traveling.

Visit www.klnl.org for More Listings

Key Lock & Lantern Email Notifications

If you are not already receiving the link to this newsletter directly from KL&L, go to the "Contact KL&L" page on the Key Lock & Lantern website at www.klnl.org and sign up for our email list. You will receive links to the *KL&L News* when it is published and occasional notifications of events of interest to members. The email list is hosted by MailChimp, which makes it easy to unsubscribe at any time, and KL&L never sells or shares its email list with outside parties. Don't miss important news and announcements - sign up today!

Want Ads for KL&L Members

As noted in previous issues, the "Want Ad" section of the *KL&L News* is undergoing an update to remove outdated notices. If you would like to submit an ad for inclusion in future issues, contact KL&L editor Dave Hamilton at transportsim@aol.com. Basic want ads are free for current Key Lock & Lantern members.

Member Address Changes & Corrections

The *Key Lock & Lantern* magazine is sent via First Class Mail and is therefore forwarded by the U.S. Postal Service for the designated period following an address change. However, due to the frequency of publication of the magazine, the time for forwarding may expire in between issues, and your magazine may be returned to KL&L. Please make sure that Key Lock & Lantern is on your list of organizations to notify in the event of a change of address. Also, please check your mailing label when receiving your copy of the magazine, and advise KL&L if any corrections are needed. Contact Marie Brainard at j944wb@aol.com if changes are required.



For News & Information, Visit the KL&L Page on Facebook. Use the link at www.klnl.org.

Visit www.klnl.org for More Listings

KEY LOCK & LANTERN

Can Help Promote Your
Auction, Show or Event

With Advertising in KL&L Publications

2300+ Facebook Followers

200+ Daily Website Visits

450+ Newsletter Subscribers

Contact KL&L Editor Dave Hamilton at
transportsim@aol.com



**All submissions for the KL&L magazine,
news items for the digital KL&L News
& general inquiries should be sent to:**

KL&L President & Editor
David Hamilton
E-mail: transportsim@aol.com

**Send membership applications, dues
payments, and address changes to:**

KL&L Chairman John Brainard &
VP-Membership Marie Brainard
E-mail: j944wb@aol.com

Join or Renew Your
KEY LOCK & LANTERN
Membership Online at
www.klnl.org

KL&L Membership Form (2023 Membership Year)

Please make check or money order payable to Key, Lock & Lantern, Inc. and forward to:
Marie Brainard, KL&L Membership, 35 Nordhoff Place, Englewood, NJ 07631-4810

Name _____

Representing (business or museum, if applicable) _____

Address _____

City _____ State/Prov _____ Zip/Mail Code _____

Phone _____ E-mail _____

Basic membership at \$30 per year (1st Class mailing in USA) or \$40 per year (non-USA).....\$ _____

Contributing membership at \$35 per year, to help support KL&L(1st Class mailing in USA)..... \$ _____

Additional Donation.....\$ _____

Enclosed is my check / money order payable to Key Lock & Lantern, Inc. for.....\$ _____

Membership in KL&L includes 4 issues of the printed magazine, special member rates for KL&L Convention registration, and access to "members only" content on the KL&L website. New members joining before September will receive all previously published magazines for the year, and will be due for renewal in the following January. New members joining in September or later will have their dues applied to the next membership period, beginning with the Jan/Feb/Mar issue, unless otherwise requested.