



# KEY LOCK & LANTERN NEWS



Jan/Feb 2024

Issue No.78

*The Bi-Monthly Digital Supplement to Key Lock & Lantern Magazine*



**Railroad Museum &  
Preservation News**

**Winter Railroad  
Auction Reports**

**KL&L Convention  
Registration Open**





# KEY LOCK & LANTERN NEWS



The Bi-Monthly Digital Supplement to Key Lock & Lantern Magazine  
WWW.KLNL.ORG

## Key, Lock & Lantern

A non-profit membership corporation dedicated to the preservation of transportation history and railroad memorabilia

*The mission of Key, Lock & Lantern is to gather and publish information on the history of the transportation industry, and to support the preservation of railroad artifacts. KL&L members have an interest in all aspects of railroad & transportation history, from research and preservation projects to the conservation and restoration of all types of historical memorabilia. Originally formed in 1966, Key, Lock & Lantern, Inc. was officially incorporated in 1988 as a non-profit, educational, membership corporation in the State of New Jersey, under the provisions of Section 501(c)(3) of the United States Internal Revenue Code. Membership is open to anyone with an interest in transportation history and in achieving the goals of the organization.*

### Officers & Trustees

#### Chairman of the Board

John Brainard  
j944wb@aol.com

#### President & Editor

David Hamilton  
transportsim@aol.com

#### VP- Membership / Treasurer

Marie Brainard  
j944wb@aol.com

#### Secretary

Jeremy Tuke

#### Chaplain / Sgt at Arms

Chip Greiner

#### Historian

Peter Gores

#### Trustees at Large

Lyman Gray, Sam Lombardi, Joel Shaw, Sam Ferrara, Phil Simms, Leonard Gordy, Bob Lipman, Randy Bushart, William Sternitzke, Bill Roberts, Bob Myers, Joey Senese, Matthew Bushart, Michael Decker

[www.klnl.org](http://www.klnl.org)



For Current News  
"Like" KL&L on

facebook

January/February 2024	Issue #78
From the President's Desk .....	3
Railroad Event Calendar .....	3
Brookline Auction Report.....	4
Railroad Memories Auction Report.....	6
JM Hobby Railroadiana Auction.....	8
Rail & Road Auction Report.....	10
2024 KL&L Convention Registration.....	12
KL&L Annual Meeting Announcement.....	16
Key Lock & Lantern Issue #183 Mailed.....	17
Flying Yankee to be Sold.....	18
Iron Horse Rambles to Return.....	19
Union Pacific Big Boy Ready for 2024.....	20
B&LE Locomotive at Age of Steam Roundhouse.....	21
<b>KL&amp;L News Editor.....</b>	<b>David Hamilton</b>

The Key, Lock & Lantern News is published bi-monthly as a digital supplement to the quarterly Key, Lock & Lantern magazine. Recipients may repost or forward complete and unmodified copies of this newsletter to other hobbyists and websites, but its content may not otherwise be copied or distributed without the permission of the KL&L Board of Trustees. Copyrights are held by the respective authors and photographers. Excerpts of news items may be published with the credit line "Key, Lock & Lantern News"

Annual membership dues for Key, Lock & Lantern are \$40 for residents of the USA, and \$60 for outside of the USA (by money order or electronic payment in US funds). Members receive four issues of the quarterly KL&L magazine, delivered via first class mail. Memberships for additional family members are \$5 each (only one magazine is sent per family). Applications for membership & address changes should be forwarded to the VP-Membership at the e-mail address listed at right. Online membership forms and dues payment via Paypal are available at [www.klnl.org](http://www.klnl.org).

Contributions of articles, photos, and news may be forwarded to the editor at the e-mail address listed at right. Hard copy articles should be written on 8 1/2 x 11" paper, and typed or neatly printed. Photos should be sent with a caption card attached which includes the contributor's name, phone number, and description. Photocopies of advertising and supply catalogs are acceptable. The submission of material in digital format is preferred, with text files in DOC, TXT, or PDF format, and images in JPG, TIF, BMP or GIF format. Digital files may be sent by e-mail or on a computer CD or flash drive. Please contact the editor regarding optimum file sizes and formats.

By submitting material to Key, Lock & Lantern, the contributor grants permission for use in any edition of the KL&L magazine, digital newsletter, websites, and other publications. All material will be retained by KL&L for future use, unless the contributor specifically requests that it be returned, and includes a suitable, self-addressed, stamped envelope. Current deadlines are listed in the Key, Lock & Lantern Advertising Guide, which is available on the KL&L website at [www.klnl.org](http://www.klnl.org), or by contacting the editor.

## From the President's Desk.....

This issue is coming out a little late, as we wanted to include registration information for the 2024 KL&L Convention, and a few details needed to be worked out. Registration is now open, on the Key Lock & Lantern website or with the printed forms at the end of this newsletter. We are heading back to the Hotel Anthracite in Carbondale, PA, which has been an ideal location with many nearby train rides, museums, and historic sites. The convention will be held over our usual weekend of May 9th through 12th, which seems to offer the least number of conflicts with other events.

For those who are regulars at the convention, nothing more needs to be said - we'll see you there! If you have never been to a KL&L Convention before, there is no better time than the present to come and see what you have been missing. Although it is a smaller event than the big shows, it is still one of the best venues to meet fellow historians & collectors, add to your knowledge, and find something new for your collection. Having been to many shows and events over the decades, I can honestly say that it is my favorite one.

Printed registration forms were also mailed out with the latest issue of the *Key Lock & Lantern* magazine. Yes, it is true: the magazine is finally on the way to current members! I would like to thank everyone for their patience, while I dealt with job changes and family health issues, and I hope that you find that the magazine was worth the wait. There is plenty of interesting material lined up for future issues, which I expect to publish on a regular schedule again. While the internet is great for sharing information, it is still nice to have a printed magazine that you can hold in your hands!

On the topic of print vs. digital, the demise of "old school" things such as the print medium and in-person gatherings has been a subject of speculation since the internet became a household item over thirty years ago. Perhaps it is not really a surprise, but the younger railroad fans that I know, who have lived their entire lives during this period, have not abandoned the "hands on" aspects of the hobby. While they may share the results of their train chasing trips online as they happen, they still like to get together later, run model trains, and talk about railroading.

At a recent model railroad operating session, I was talking with a couple of the younger guys, one who enthusiastically related the results of his research on a train wreck that took place 100 years ago, and another who had been tracing the route of a nearby abandoned line. And, our newest volunteers to serve on the KL&L board are from the internet generation, but still appreciate our transportation history.

It is nice to see younger people take an interest in this aspect of the railroad hobby, as long as they don't outbid me on too many things at the auctions! At least I know that my memorabilia will find good homes when I am gone.

As always, thanks for everyone's ongoing support of Key Lock & Lantern, and I hope to see many of you at the 2024 convention. Don't forget to spread the word about KL&L!

*Dave Hamilton*

KL&L President & Editor

## Railroad Event Calendar



**Upcoming historical society conventions, special events, railroadiana shows & auctions. Listings subject to change. Check show web sites before traveling and visit [www.klnl.org](http://www.klnl.org) for updates. See submission guidelines at the end of the calendar.**

**Look for Advertisements in this Issue & on the Key Lock & Lantern Website for [Events Shown in Blue](http://www.klnl.org)**

- Mar 3**     **Clark, NJ** - Jersey Central NRHS Train Show. Mother Seton High School.  
Info: [www.jcrhs.org](http://www.jcrhs.org).
- Mar 3**     **Spokane, WA** - Spokane Train Show - River City Modelers.  
Info: [www.rivercitymodelers.org](http://www.rivercitymodelers.org).
- Mar 7-8**    **Lafayette, IN** - Railroadiana Consignment Auction. Rail & Road Auctions.  
Info: <https://rarauctions.com>
- Mar 9**     **Harrisburg, PA** - Harrisburg NRHS Railroad Show & Collectors Market.  
Info: <https://www.harrisburgnrhs.org/>
- Mar 16**    **Corvallis, OR** - Winterail Photo Expo & Railroad Collectibles Sale.  
Info: [www.winterail.com](http://www.winterail.com).
- Mar 16**    **Painesville, OH** - Painesville Railroad Museum Rail Fest.  
Info: [www.painesvillerrailroadmuseum.org](http://www.painesvillerrailroadmuseum.org).
- Mar 17**    **Lafayette, IN** - Railroadiana Book Auction. Rail & Road Auctions.  
Info: <https://rarauctions.com>
- Mar 24**    **Kingston, NY** - Railroad Hobby Show. Murphy Midtown Center.  
Info: [www.kingstontrainshow.com](http://www.kingstontrainshow.com).

*Continued on Page 27*

Front Cover: A Reading & Northern excursion train at the CNJ Mauch Chunk Station in Jim Thorpe, PA. Photo by Dave Hamilton.



# Brookline Railroad Auction Continues to Offer Memorabilia from Several Collectors

The Fall Brookline railroading auction featured additional memorabilia from the collection of Phil Simms, along with another collection from western New York and a variety of consignments from New England. More scarce artifacts are on deck for the April, 2024 sale, which should be an exciting event based on recent results. *Photos and prices realized courtesy of Brookline Auction Gallery and do not include buyers premiums and shipping.*



A \$200 bid was needed to buy this "Agent" badge from Massachusetts shortline Grafton & Upton Railroad.



A Delaware Lackawanna & Western brass top by Steam Gauge with clear cast DL&W globe sold for \$650.



This unusual pattern New Haven 9" plate by Onondaga Pottery went to a new owner for a high bid of \$525.



A \$400 bid took home this 12x8" Reading Lines "Danger High Voltage" sign from electrified commuter territory.

## KEY LOCK & LANTERN

Can Help Promote Your  
Auction, Show or Event

Contact KL&L at [transportsim@aol.com](mailto:transportsim@aol.com)

Continued on Page 22

# Railroadiana Auctions - Spring & Fall - Brookline, NH

Railroadiana Consignment Auctions Held Each Spring & Fall

Brookline Auction Gallery LLC - 32 Proctor Hill Rd, Brookline, NH 03033

Auction information including photos: [www.tagtown.net](http://www.tagtown.net)

Scott Czaja - Sales Manager

## Next Sale on April 12-13, 2024

### Featuring Consignments & Several Prominent Collections

## Some Highlights of the Fall Sale



Lehigh & Hudson River Lantern:  
Sold for \$4600



Northern Central Railway Lock:  
Sold for \$2100



Erie Lantern With Green Cast  
Globe: Sold for \$2000



Chateaugay Railroad Baggage  
Tag: Sold for \$425



Lackawanna Railroad High Voltage  
Catenary Sign: Sold for \$1000



Boston & Albany Police Badge:  
Sold for \$375

Now on [LiveAuctioneers.com](http://LiveAuctioneers.com) - We also accept absentee bids via: e-mail & mail  
Quality consignments are welcome for future sales - email Scott: [sczaja@hotmail.com](mailto:sczaja@hotmail.com)



# Railroad Memories Auction #118 Features Scarce Artifacts from Across the Country

Railroad Memories online and catalog auction #118 featured the usual selection of western memorabilia, and a few scarce pieces from other regions. In addition to high quality consignments, artifacts from several prominent collections were also sold. *Photos and prices realized courtesy of Railroad Memories and do not include buyers premiums and shipping.*



A \$775 bid took home this 5" high ceramic Great Northern Railway goat made by Shamrock Ceramic.



A Chicago Milwaukee & St. Paul Dining Car Cellar lock by Loeffelholz with key sold for a high bid of \$3400.



East coast memorabilia makes an appearance. This Buffalo Rochester & Pittsburgh Patrolman badge sold for \$5000.



A \$4600 bid was needed to buy this rare CB&Q Blackhawk pattern 10" service plate made by Bauscher in 1929.

Continued on Page 23





# RAILROAD MEMORIES RAILROADIANA AUCTIONS

## Recent Auction Highlights



Southern Pacific Adams & Westlake with Amber Cast SPRR Globe: \$14,250



Union Pacific Denver & Gulf Railway by Union Lock & Hardware: \$11,750



Northern Pacific by SG&L with Green Cast NPRRGlobe: \$5,000



Union Pacific Denver & Gulf Railway Switch Key: \$8,750



Great Northern Railway Porcelain 24" Logo Sign: \$1,350



SP&S / OERY / G NRY Dater Die from Portland, Oregon: \$1,000



AT&SF & Colorado Midland 1894 Joint Annual Pass: \$1,900



CM&STP RY Cooke Works Builders Plate: \$2,300



Chicago & Northwestern "Lunch Room" Bowl by Shenango: \$975

[www.railroadmemories.com](http://www.railroadmemories.com)

Information about consigning: 303-569-5189 or [railroadmemories@gmail.com](mailto:railroadmemories@gmail.com)

# JM Hobby Supply & Ihander Auctioneering March Auction Continues Sale of Collections

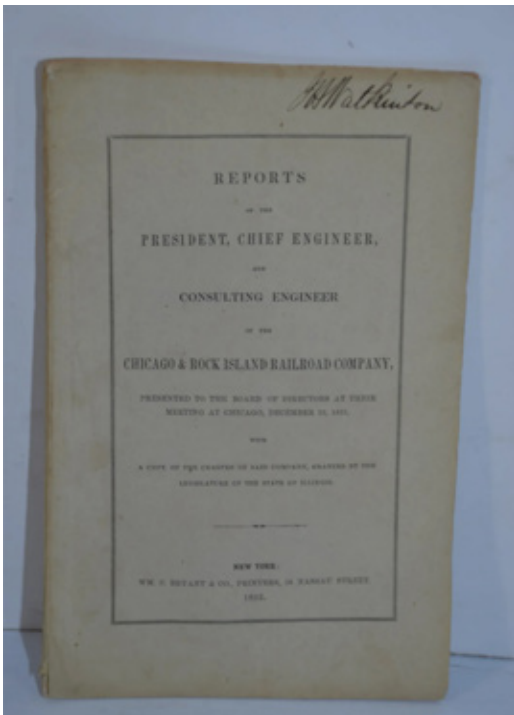
JM Hobby Supply & Railroad Artifacts and Ihander Auctioneering, continued the sale of several large collections of lanterns and early paper in their March auction. A variety of consignments have rounded out recent sales, with additional railroadiana lined up for the June 2024 sale. *Photos and prices realized courtesy of JM Hobby and do not include buyers premiums and shipping.*



A \$170 high bid was needed to purchase this Atchison Topeka & Santa Fe Railway porcelain spittoon.



This brass top lantern believed to be made by Taylor Manufacturing went to a new owner for a \$275 bid.



The first annual report from the Chicago & Rock Island Railroad, from 1852, sold for a high bid of \$300.



A \$200 bid took home this Illinois Central Railroad step box with metal ICRR tag mounted on the side.

Continued on Page 24



# JM HOBBY SUPPLY & RAILROAD ARTIFACTS

## Railroadiana Auctions

In Conjunction with Ihander Auctioneering

**NEXT RAILROAD ARTIFACT AUCTION - JUNE 2024**

**Continuing the Sale of Several Large Collections With the Addition of Many New Consignments**

### *Highlights of Recent Sales*



Sold for \$550



Sold for \$4000



Sold for \$650



Sold for \$1200



Sold for \$400



Sold for \$400



Sold for \$2300



Sold for \$1000

**WE OFFER THE LOWEST SELLERS COMMISSIONS AND BUYERS FEES IN THE U.S.A!**

**SHIPPING IS AT ACTUAL COST....NOT INFLATED!**

Call us today to discuss selling your collection at 920-857-9670!

PO Box 25, Luxemburg, WI 54217

Online bidding will be available at [www.liveauctioneers.com](http://www.liveauctioneers.com)

Email us at [jmhobbysupplyandrrartifacts@gmail.com](mailto:jmhobbysupplyandrrartifacts@gmail.com) for a link to the sale.

Or visit our website at [www.jmhobbysupply.com](http://www.jmhobbysupply.com)

# Rail & Road Continues Full Schedule of Auctions With Consignments & Collections

Rail & Road is on its way to being the highest volume seller in the railroadiana auction market, with sales being held almost every other month. The busy schedule continues in 2024, with auctions in March, May and June planned. *Photos and prices realized courtesy of Rail & Road Auctions and do not include buyers premiums and shipping.*



*A Chesapeake & Ohio Charlottesville pattern cup and saucer by Buffalo China sold for a high bid of \$300.*



*A \$7900 bid was needed to purchase this section of the New York Central 20th Century Limited red carpet.*



*A \$900 bid took home this New York Central System Station Master cap made by Hankin Brothers.*



*A Baltimore & Ohio blue china Potomac Valley water pitcher by Lamberton went to a new collection for \$2100.*



*A Michigan Southern & Northern Indiana brass lock by Thomas Slight sold for a high bid of \$550.*



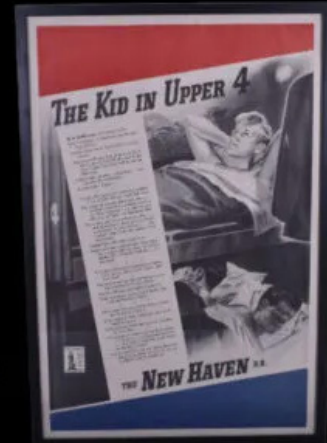
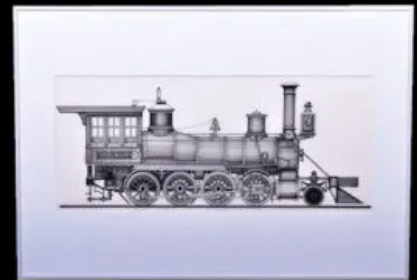
*A \$375 high bid purchased this Detroit United Lines Motorman cap complete with number side badge.*

*Continued on Page 25*



# Rail & Road Online Railroadiana Auction March 7th & 8th, 2024

Upcoming Sales: March 17th Railroad Book Auction  
May Transportation & June Railroadiana Auctions



Rail & Road Auctions presents our March Transportation Auction. Both days feature a quality selection of Railroadiana & Transportation Memorabilia & Collectibles.

View the catalogs on our website & register to bid.  
Rail & Road offers online, absentee, and telephone bidding.



## RAIL & ROAD AUCTIONS

[WWW.BIDRAR.COM](http://WWW.BIDRAR.COM)

765-412-7926



# All Aboard for the 2024 Key Lock & Lantern Convention



Registration is now open for the 2024 Key Lock & Lantern Convention, which will once again be held at the Hotel Anthracite in Carbondale, PA over the weekend of May 9th through 12th. All transportation history buffs and collectors are invited to attend the many events that are scheduled for the weekend.

Informal activities begin on Thursday evening, May 9th, when most attendees begin to arrive. Pre-show railroading trading will take place in the hotel's Canary Lounge, and many KL&L members gather in the adjoining bar to catch up with old friends and make new ones. The convention schedule offers plenty of opportunities such as this to relax and discuss transportation and industrial history and current

preservation efforts. While it is not the biggest event for railroad historians, it is certainly one of the best for making contacts with fellow collectors, railroad preservationists, and other organizations.

On Friday, May 10th, a special KL&L excursion train will operate over the Reading & Northern RR from Pittston, PA to Jim Thorpe, PA and return. The train will depart from the railroad's station at 718 N. Main Street in Pittston, PA, with ticket pickup beginning at 9:30am and departure at 10:00am. Pittston is located about 30 miles south of Carbondale, with plenty of free parking at the station (transportation from the hotel is not provided, but carpooling will be available).

The train will traverse the scenic former Lehigh Valley and Central Railroad of New Jersey route through the Pocono Mountains and the Lehigh River Gorge. Seating will be in newly restored "Crown Class" coaches, featuring reclining seats, opening windows, and restrooms. Snacks and drinks will be available to purchase in the train's dining car.

Arrival at the former CNJ station in Jim Thorpe is scheduled for noon, with a two hour layover planned to allow for lunch in town. There are a variety of antique shops and other stores within walking distance of the train, with information available at a visitor's center in the station. Departure is scheduled for 2:30pm, with arrival back in Pittston planned for approximately 4:00pm. Tickets are \$39 per person.

*Continued on Page 13*





# 2024 KL&L Convention

*Continued from Page 12*

Dinner on Friday evening is on your own, and the KL&L board will hold its annual meeting. If there is any business that members wish to have considered by the board, please forward it to KL&L president Dave Hamilton prior to May 1st. After dinner, more pre-show trading will take place in the Canary Lounge (or in the hotel courtyard, weather permitting).

On Saturday, May 11th, the Gravity Hall banquet room at Carbondale's Hotel Anthracite will once again be filled with transportation history exhibits and tables of authentic railroad memorabilia for sale or trade. The Transportation History Exposition is the "main event" of the Key Lock & Lantern Convention, providing members with a venue to showcase interesting artifacts from their collections and the results of their research. Over fifty tables are available in the 6000 square foot facility, and this year's event promises to be another exciting one.



Erie Railroad, the Northern Central Railroad, the Delaware & Hudson Canal Company, the Chicago & Alton Railroad, Taylor Manufacturing Company, street & post lamps, railroad police badges, and lantern patent models have been featured in recent years.

In addition to the displays, most exhibitors also offer authentic memorabilia for sale or trade. A collector will find every type of railroadiana at the show, from hardware to paper and everything in between. A nice selection of lanterns



KL&L members competing for the "Best in Show" award have presented a variety of exhibits in recent years, with topics ranging from lantern manufacturers to local railroad history. Some of the displays at recent shows included: the Nail City Lantern Company, Delaware Lackawanna & Western Railroad memorabilia, early Amtrak timetables, passes from New York & Pennsylvania railroads of the 1850-1890 period, railroad uniform badges, and an original CTC machine panel from the New York Central Railroad. The



(including non-railroad models) is usually offered by several collectors, along with globes, founts, and other parts. Several exhibitors are experts at lantern restoration, and are always happy to give advice, or to offer their repair services. Lock and key collectors will find plenty of scarce examples for their collections, and can exchange "want lists" with others who are looking for similar artifacts.



*Continued on Page 14*



# 2024 KL&L Convention

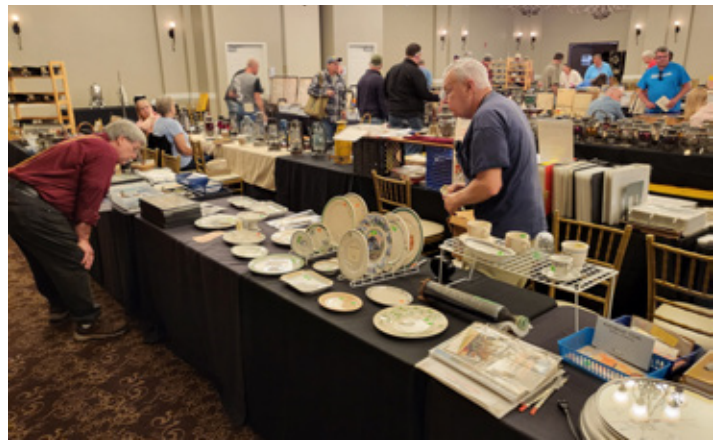
Continued from Page 13

A growing number of timetable and paper collectors have been participating in the show in recent years, with several members of the National Association of Timetable Collectors scheduled to exhibit this year. From rare 19th century employee timetables to modern public timetables in the “dollar bin,” there is something available to fit every ephemera collector’s budget. A variety of used books on transportation and industrial history subjects are also usually offered for sale by various exhibitors.



Several historical societies are also expected to have tables at the show, offering books and memorabilia for sale, and providing information about their group’s activities. The KL&L Convention is an excellent event for networking with fellow historians, and members of these groups are looking forward to meeting collectors with similar interests.

Box lunches will once again be available to exhibitors and attendees for a very reasonable price of \$12. Lunches include a choice of sandwich (chicken salad, turkey, tuna salad, ham, or roast beef), chips, dessert, and bottled water. Box lunches must be ordered in advance, and the hotel restaurant will not be open for lunch. For those attendees who would like to take a break for lunch, there are several restaurants and fast food establishments within walking distance of the hotel.



The KL&L fundraiser sale will take place in the afternoon, with several tables of donated memorabilia to be sold to the highest bidder. All proceeds from this event are used to keep registration fees at a reasonable level, with the convention operating on a break-even basis every year as a result. There is always some interesting (and sometimes scarce) memorabilia to buy, and it is a great opportunity to pass along something that is no longer needed in a collection, while supporting a good cause.



The annual membership meeting of Key Lock & Lantern will be held at 2:00pm on Saturday afternoon, in the exhibit hall. The “Best in Show” award will also be presented to the member whose display receives the most votes from show attendees.

Setup for the Transportation History Exposition begins at 7:30am, with doors to the Gravity Hall opening at 9:00am. The convention registration fee of \$5 entitles members to admission to all events during the day. For those who do not have exhibit tables, but would like to enter the hall during setup, and early admission pass is available for \$20. For those only planning on attending the show, registration will be available at the door for \$10 per person.



Continued on Page 15





At 5:00pm on Saturday evening, a buffet dinner will be held in the Hotel Anthracite Gravity Hall. Dinner is only \$29 per person, and must be reserved in advance. Following dinner, a variety of railroad history programs will be presented (a complete schedule will be announced in the next issue of the *KL&L News*). Convention registrants who do not attend the banquet are welcome to return at 6:30pm for the programs.



The schedule for Sunday has once again been left open for those who wish to explore the many local historic sites and museums on their own, or head home for Mother's Day. It is anticipated that Steamtown will have their short trips with the steam locomotive in operation by that weekend, and the Electric City Trolley Museum will be offering rides. There should be some freight train action on nearby lines for the train chasers, as well.

Online registration for the convention is available on the KL&L website at [www.klnl.org](http://www.klnl.org), or by mail with the forms that are included at the end of this newsletter. Reservations for the Hotel Anthracite at the special KL&L rate of \$109 per night plus tax should be made by calling the hotel directly at 570-536-6020. Be sure to register early, as hotel rooms and table space are limited. This year's convention is shaping up to be another great event, so get onboard today!





# Annual Key Lock & Lantern Membership Meeting to be Held on May 11, 2024



The annual membership meeting of Key Lock & Lantern will be held on Saturday, May 11, 2024, at 2:00pm, at the Hotel Anthracite, 25 S. Main Street, Carbondale, PA. The annual meeting of the KL&L Board of Trustees will be held at the same location on Friday, May 10, 2024.

A summary of the reports of the officers of the organization will be presented by the president at the meeting. If any member in good standing wishes to inspect the detailed financial reports and meeting minutes, they will be available for review at the meeting upon request.

If any member has new business that they would like to have addressed at the general membership meeting or the Board of Trustees meeting, please forward it to KL&L president David Hamilton prior to May 1, 2024. Contact information for KL&L officers and trustees may be found in the latest issue of the *Key Lock & Lantern* magazine, in this newsletter, and at [www.klnl.org](http://www.klnl.org).

## Calling All Members: Help Spread the Word!

When we discover a rare lantern at a country auction in the middle of nowhere, we are generally happy when no other collectors show up. On the other hand, events such as the KL&L Convention are a success when more people attend. And, the cost of publishing the KL&L magazine is lower on a per-issue basis when the press run is larger. In short, the more members we have, the better the organization will be!

The internet and social media have allowed KL&L to reach many historians and collectors that would have likely never heard of the organization in the past. There are many people out there who would probably enjoy being members of Key Lock & Lantern, if they knew about everything that we have to offer.

Our current members are the key to successfully promoting KL&L, whether it is through social media or in-person events such as train shows and related historical society events. The easiest thing that our members can do to help grow KL&L is to spread the word through social media.

Following the Key Lock & Lantern Facebook page helps boost its visibility to other users. When KL&L makes a post about the convention, the publication of a newsletter, or just some photos, sharing them with relevant Facebook groups (after checking that they haven't already been posted) helps increase traffic to the KL&L page. When traffic goes up, the KL&L postings are more likely to appear in news feeds.

The same goes for the KL&L YouTube Channel. Videos are more visible when there are more subscribers to the channel, and individual videos are more likely to be seen when they have more "likes" and comments. The more exposure that KL&L gets, the more potential members learn about it.



For those members who aren't ready to take the plunge into the world of social media or YouTube accounts, then good old-fashioned networking at train shows and events is a great way to get the word out. Having a few convention flyers to hand out to prospective attendees is always good (there are two at the end of this newsletter), and will also increase the traffic to the KL&L website.

Let's get the word out about KL&L, and help make the organization bigger and better! You may hope to still be the only railroading collector who shows up at an estate sale, but when it comes to shows and meetings, we love a crowd!





# The Flying Yankee Association Submits its Proposal for Ownership of B&M 6000



The Flying Yankee Association (FYA) has officially submitted its proposal to the New Hampshire Department of Transportation (NHDOT) Bureau of Rails & Transit to transfer ownership of the Flying Yankee from the State to the FYA.

The NHDOT formally released a Request For Proposals (RFP) in November of 2023 to receive applications from businesses, groups, or individuals to make their cases as to why they believe they should take ownership of this historic streamliner train. The RFP's submission window officially closed on January 3, 2024.

“We believe we’ve put our best foot forward with our submission to the State,” said FYA’s Charman Brian LaPlant. “The FYA was well prepared for this opportunity; the past few years have been spent laying out strong plans, forging valuable partnerships, and seeking various resources to help create a solid proposal for the future of the Flying Yankee. Whatever the outcome of the RFP, we are excited to learn that the Flying Yankee will soon have a new purpose and direction. Sitting untouched for over twenty years has been a long time to wait.”

The Flying Yankee Restoration Group d/b/a Flying Yankee Association is a 501(c)(3) non-profit charitable organization that is responsible for raising and managing funds related to the restoration of the famous Flying Yankee train, originally owned and operated by the Boston & Maine Railroad. For more information, please visit the FYA website at [www.flyingyankee.org](http://www.flyingyankee.org), or find the organization on Facebook, X (formerly Twitter), and Instagram. *News & photos from the Flying Yankee Association.*



**Railroad Museums &  
Historical Societies  
Send in news & photos to  
**KEY LOCK & LANTERN**  
E-mail: [transportsim@aol.com](mailto:transportsim@aol.com)**



# Three Iron Horse Rambles Featuring Steam Locomotive #2102 Slated for Summer 2024

The Reading & Northern Railroad will continue the tradition of Iron Horse Ramble excursions in the summer of 2024. These excursions will feature one of the largest operating steam locomotives on the east coast, 4-8-4 T-1 class #2102, built in 1945 in nearby Reading, PA. Passenger Department Senior VP/General Manager, Matt Fisher, states “We listened to feedback from our loyal passengers and fans and decided to carry on with these great steam excursions. One of the Rambles will be over the familiar Reading-to-Jim Thorpe route; but the other two will be to exciting new destinations never before visited by the #2102.”



The first Iron Horse Ramble on Saturday, May 25, 2024, will operate from Reading Outer Station to Jim Thorpe, PA. The train will depart at 9:00am sharp, make a station stop at Port Clinton, and continue to the classic destination of Jim Thorpe; where passengers will have over four hours to explore the town, take photographs of the #2102, meet the crew, and experience a ride on the Lehigh Gorge Scenic Railway. The train will return to Reading Outer Station in the evening. To help make this trip even more affordable, Reading & Northern will offer Standard Coach tickets for \$79.00 (previously \$99.00) per passenger, and Crown Class Coach tickets for \$99.00 (previously \$110.00) per passenger. Additional upscale seating options will also be available by calling our ticket office.

The second and third Iron Horse Rambles for this year will be all-new. Both will feature the #2102 operating over the entire length of our Lehigh Division Main Line. On Saturday, June 22, 2024, #2102 will power the very first steam passenger excursion from our Nesquehoning Campus to Tunkhannock, PA, for the town's 43rd Annual Founder's Day Festival. This lively event, sponsored by the Tunkhannock Business and Professional Association, will feature food and craft vendors, live music, entertainment, and more. Departure will be at 9:00am, and passengers will receive ample time to enjoy the festival before returning to Nesquehoning in the evening. Along the way, railfans will marvel at the power of steam locomotive #2102 as it pulls the train upgrade through Lehigh Gorge State Park, over Penobscot Mountain, through the Wyoming Valley, and along the east bank of the

Susquehanna River to Tunkhannock. Tickets will be priced at \$99.00 for Standard Coach and \$110.00 for Crown Class Coach. Limited additional premium seating options will also be available by phone.

Expanding upon the theme of new destinations for 2024, the third and final Iron Horse Ramble will operate on Saturday, August 17, from Nesquehoning to Pittston, PA for the annual Tomato Festival. This one-of-a-kind event features great food (including a spaghetti eating contest), rides, bingo, live entertainment, and the Little Mr. and Miss Tomato contests. As always, departure will be 9:00am, and once more feature #2102 thundering through the Lehigh Gorge on its way to Pittston. Passengers will of course have lots of time to take in the Tomato Festival before returning to Nesquehoning in the evening. As with the June Ramble from Nesquehoning, tickets will be \$99.00 for Standard Coach and \$110.00 for Crown Class Coach. A limited number of premium seating options will be available by phone. Tickets for these exciting steam excursions which will take place on May 25, June 22, and August 17, go on sale at 9:00am on Thursday, February 15, 2024, at 9:00am by phone at 610-562-2102, or online at [www.rbmrr-passenger.com](http://www.rbmrr-passenger.com). *News courtesy of Reading & Northern RR. John McCardell photo courtesy of Reading & Northern Railroad.*

**KEY LOCK & LANTERN**  
Ads Reach Serious Collectors  
Contact KL&L at [transportsim@aol.com](mailto:transportsim@aol.com)

# Union Pacific Big Boy Locomotive No. 4014 Preparing for “Four Corners” 2024 Tour



Union Pacific’s famed Big Boy No. 4014, the world’s largest steam locomotive, will return to the rails in 2024 for a tour celebrating the railroad’s deep history and connection to communities, and its employees. The tour is expected to reach all four corners of Union Pacific’s 23-state system with anticipated stops in: Chicago, Dallas/Ft. Worth, Houston, Nampa, ID, Portland, Roseville, CA, Salt Lake City.

“As we move forward at Union Pacific, we remember where we came from; the Big Boy represents the history of Union Pacific and the United States,” said Union Pacific CEO Jim Vena. “When No. 4014 comes to town, we will celebrate with the communities where we operate, our employees and their families. Together, we will marvel at how far technology has brought us.”

No. 4014 is the only Big Boy in operation today. Weighing in at 1.1 million pounds, it was restored in 2019 to celebrate the 150th anniversary of the transcontinental railroad’s completion. The Big Boy locomotives were built for Union Pacific to haul heavy freight during World War II, but only eight still exist. The other seven are on display around the United States.

Twenty-five Big Boys were built exclusively for Union Pacific Railroad, the first of which was delivered in 1941. The locomotives were 132 feet long and weighed 1.2 million pounds. Because of their great length, the frames of the Big

Boys were “hinged,” or articulated, to allow them to negotiate curves. They had a 4-8-8-4 wheel arrangement, which meant they had four wheels on the leading set of “pilot” wheels which guided the engine, eight drivers, another set of eight drivers, and four wheels following which supported the rear of the locomotive. The massive engines normally operated between Ogden, Utah, and Cheyenne, Wyo.

Tour dates and route information will be released soon. In addition to public stops, Union Pacific employees and their families will be invited along the route. When the Big Boy goes on tour, many people race to find a prime spot to take photos or put coins on the track. Union Pacific reminds everyone to keep safety top of mind, always stay 25-feet back, and refrain from putting anything on the rails. *News & photos courtesy of Union Pacific.*

## **KEY LOCK & LANTERN**

**Can Help Promote Your  
Auction, Show or Event**  
Contact KL&L at [transportsim@aol.com](mailto:transportsim@aol.com)



# Bessemer & Lake Erie Locomotive #643 Arrives at Age of Steam Roundhouse

Age of Steam Roundhouse Museum is pleased to share that former Bessemer and Lake Erie Railroad steam locomotive #643 has arrived in Sugarcreek, Ohio. This massive 2-10-4 will now be unloaded, reassembled, and restored for display in AoSRM's 18-stall roundhouse facility.

This occasion marks the conclusion of a 4+ year project to extract the locomotive from its longtime home in McKees Rocks, Pennsylvania. The tender of #643 made the trip via truck several years ago, but the boiler and frame traveled via heavy-duty railroad flatcars. Due to its proximity to active rail lines, utilities, public roadways, and other obstacles, moving #643 to Sugarcreek was a complicated process involving tireless coordination with many different organizations and stakeholders.

As just one example of this collaboration, #643's railroad journey involved three distinct railroad handoffs ("interchanges") and movement in nine different trains to arrive at the Roundhouse. We thank our friends at CSX Transportation, Norfolk Southern Railway, and Genesee and Wyoming Inc. for helping #643 arrive safely and efficiently.



The arrival of 643 also fulfills a longtime dream of AoSRM Founder Jerry Jacobson, who long dreamt of adding the locomotive to his stable of historic steam locomotives. "The King," as Jerry called it, will now be well-cared for and on public display for the first time in decades because of Jerry's vision. We look forward to sharing this incredible representative of America's industrial heritage with Roundhouse visitors. Tickets for tours and events are available at [www.ageofsteamroundhouse.org](http://www.ageofsteamroundhouse.org). *News and photos courtesy of Age of Steam Roundhouse Museum.*



B&LE #643 is a heavy-haul steam locomotive that was designed and built to move iron ore, coal, and other high-density commodities to and from the Great Lakes region. Built in 1944, the 643 saw an early retirement in 1952 due to the increased introduction of diesels to the Bessemer & Lake Erie's locomotive roster. Fortunately, the 643 and two other smaller steamers were preserved by the B&LE in its roundhouse in Greenville, Pa.

B&LE 643 will become the largest locomotive in the AoSRM collection. This behemoth is just over 108' long, stands over 16' high, and weighs 308.32 tons without coal and water. Add 26 tons of coal, and 23,000 gallons of water, and B&LE 643 tops the scales at 908,720 lbs., or more than 454 tons!



**Railroad Museums & Historical Societies**  
Send in news & photos to  
**KEY LOCK & LANTERN**  
E-mail: [transportsim@aol.com](mailto:transportsim@aol.com)



A \$375 high bid bought this West End Street Railway (of Boston) Driver badge made by Aborn Hatter.



A Grand Trunk Railroad bellbottom by Wright with a red cast GTR globe sold for a high bid of \$450.



A round-bottom Delaware & Hudson logo lounge car glass went to a new collection for a high bid of \$150.



A \$2000 bid was needed to take home the Erie RR CT. Ham with a matching green cast Erie RR globe.



A \$300 bid was needed to purchase this Stop On Red signal porcelain sign with cat's eyes intact.





A \$1050 bid was needed to buy this Northern Pacific Yellowstone Park Line logo 2" watch fob with chain.



A Denver Laramie & North Western Railway brass heart lock by Miller went to a new owner for a \$3200 bid.



A 14k gold 50-year Illinois Central Railroad pass issued to Fred Douglas George went to a new home for \$2700.



A \$9000 high bid sent this 1892 Otto Mears silver filigree pass from the Rio Grande Southern to a new home.



A \$7000 bid purchased this Santa Fe brass heart lock with Adams & Westlake hexagon logo on the shackle.



A Denver & Rio Grande Western Alco/GE builders plate from a PA-1 locomotive sold for a \$6750 high bid.

**KEY LOCK & LANTERN**  
Ads Reach Serious Collectors  
Contact KL&L at [transportsim@aol.com](mailto:transportsim@aol.com)

**KEY LOCK & LANTERN**  
Can Help Promote Your  
Auction, Show or Event  
Contact KL&L at [transportsim@aol.com](mailto:transportsim@aol.com)





A 27x24" porcelain sign by Verbrite of Chicago, with the Missouri-Kansas-Texas Lines logo sold for \$4000.



A \$350 high bid took home this porcelain 3-piece Railway Express Agency sign, with a total length of 83 inches.



A \$375 bid was needed to buy this Chicago & Northwestern Flambeau 400 dinner plate by Shenango China.



This porcelain New York City subway "No Smoking / Spitting" sign went to a new collection for \$475.



One of several maps in the auction, this 1890 Cram's Township & Railroad Map of New York sold for \$160.



A \$70 bid took home this Oregon Short Line Railroad 1899 public timetable with a few condition issues.





A Toledo Railway & Terminal Company brass lock and matching TR&T Co key sold for a high bid of \$160.



A \$575 bid took home this 17" aluminum sign of the Atlantic Coast Line logo, with a fair amount of wear from use.



A \$500 bid purchased this 5" Pullman Company Indian Tree milk pitcher by Onondaga Pottery of Syracuse.



A Richmond & Danville Railroad brass lock with matching key went to a new collection for a high bid of \$2600.



A Pyle National marker lamp with collector-installed wiring and rotating green lens sold for a \$1400 high bid.

## KEY LOCK & LANTERN

Can Help Promote Your  
Auction, Show or Event  
Contact KL&L at [transportsim@aol.com](mailto:transportsim@aol.com)

# CLASSIFIED ADS

Classified ad listings are free for Key Lock & Lantern members. Ad size must fit in four lines, and must include a name and contact email address (the word "at" may be substituted for "@" in the email address, if desired) or website address. A maximum of five ads per person may be run at the same time. Send ads to Dave Hamilton at [transportsim@aol.com](mailto:transportsim@aol.com).

## Auctions

**Brookline Auction Gallery.** Brookline, NH. Railroadiana consignment & estate auctions. Contact sales manager Scott Czaja at [sczaja@hotmail.com](mailto:sczaja@hotmail.com) or visit [www.tagtown.net](http://www.tagtown.net).

**JM Hobby Supply & Railroad Artifacts.** Luxemburg, WI. Railroadiana consignment & estate auctions. Contact John DeBeck at [jmhobbysupplyandrrartifacts@gmail.com](mailto:jmhobbysupplyandrrartifacts@gmail.com) or visit [www.jmhobbysupply.com](http://www.jmhobbysupply.com).

**Railroad Memories.** Georgetown, CO. Online consignment & estate auctions. Contact Sue Knous at [railroadmemories@gmail.com](mailto:railroadmemories@gmail.com) or visit [www.railroadmemories.com](http://www.railroadmemories.com).

**Rail & Road Auctions.** Lafayette, IN. Online railroadiana auctions. Contact Derek Thomas at [info@RARauctions.com](mailto:info@RARauctions.com) or visit <https://rarauctions.com>.

## Locks & Keys

**Wanted: Switch Key** from the Baltimore Transit Company (B T Co.) Will pay a good price for a key in decent condition. Dan Allen: [NJSRR\(at\)aol.com](mailto:NJSRR(at)aol.com).

**Wanted: Locks** - fancy cast back railroad switch locks. Warren Nyerges: [warrennyergesjr@hotmail.com](mailto:warrennyergesjr@hotmail.com) or visit [www.antiquerailroadlock.com](http://www.antiquerailroadlock.com).

## Locomotive & Rolling Stock Hardware

**Builder's Plates for Sale.** Original steam, diesel & electric builder's & number plates. Contact us for a current list of plates. Ron Muldowney: [rjmuldowney@comcast.net](mailto:rjmuldowney@comcast.net).

## Railroadiana Dealers

**Times Treasures** Railroad & Country Collectibles on Ruby Lane. All types of railroadiana, with new items added on a regular basis. <http://www.rubylane.com/shop/timestreasures>

## Trolleys & Transit

**Wanted: Photos of Syracuse, NY** trolley car #1024 & trolley cars around Syracuse University & Archbold Stadium. Dave Hamilton: [transportsim@aol.com](mailto:transportsim@aol.com).

## The Bi-Monthly Digital

## KEY LOCK & LANTERN NEWS

Sent by Email Link to 520+ Subscribers

Visible to 200+ Daily Website Visitors

Appears in Internet Searches

Submit your ad to: [transportsim@aol.com](mailto:transportsim@aol.com)

*Want Ads Are Back!*

*Free for KL&L  
Members!*

*Read Submission  
Guidelines & Send to  
the Editor!*



- Apr 6** DeLand, FL - Florida Rail Fair. Golden Spike Enterprises  
Info: www.gserr.com.
- Apr 6-7** Denver, CO - Rocky Mountain Train Show. Train Collectors Association.  
Info: http://rockymountaintrainshow.com
- Apr 6** Monaca, PA - Beaver County Model RR & Historical Society Train Show  
Info: www.bcmrr.railfan.net.
- Apr 7** Amsterdam, NY - Rails Along the Mohawk Train Show  
Info: www.ahts.org.
- Apr 12-13** Brookline, NH - Railroadiana Consignment Auction. Brookline Auction Gallery.  
Info: www.tagtown.net.
- Apr 14** Batavia, NY - Great Batavia Train Show. Genesee Society of Model Engineers.  
Info: www.gsme.org.
- Apr 20-21** Calgary, AB - Calgary Super Train Railroad Show.  
Info: www.supertrain.ca.
- Apr 21** Griffith, IN - Blackhawk Chapter NRHS Swap Meet Railroadiana Show.  
Info: www.blackhawknrhs.org.
- Apr 21** New Braunfels, TX - New Braunfels Train Show.  
Info: www.nbrmm.org
- Apr 25-28** St. Louis, MO - Katy Railroad Historical Society Convention.  
Info: www.katyrailroad.org.
- Apr 26-28** Indianapolis, IN - New York Central Historical Society Convention.  
Info: http://nycshs.org.
- Apr 27** Boonsboro, MD - Hagerstown Model RR Museum Train Show  
Info: www.antietamstation.com.
- Apr 27** Columbus, OH - Buckeye Railroadiana Show by Golden Spike Enterprises.  
Info: www.gserr.com.
- May 4-6** Bennington, VT - Rutland Railroad Historical Society Annual Convention.  
Info: https://www.rutlandrailroad.org/
- May 8-12** Altoona, PA - Pennsylvania Railroad Tech & Historical Society Meeting.  
Info: www.prrths.org.
- May 9-12** Carbondale, PA - Key, Lock & Lantern Convention. Transportation History Expo  
Info: www.klnl.org.

## Send listings to: [transportsim@aol.com](mailto:transportsim@aol.com)

There is no charge for calendar listings. Train shows must include dealers of authentic railroad memorabilia or related material, and auctions must include at least 20 lots of railroadiana. Other events must be directly related to railroad history (special exhibitions, lecture programs, conventions, limited excursions, etc.). Regular monthly group meetings, model train meets & scheduled tourist train trips are not eligible, unless related to a special event. Events are listed space permitting, at the editor's discretion. Listings are subject to error or change. Always check show web sites before traveling.

Visit [www.klnl.org](http://www.klnl.org) for More Listings

# Key Lock & Lantern News & Information

## Key Lock & Lantern Email List

If you are not already receiving the link to this newsletter directly from KL&L, go to the "Contact KL&L" page on the Key Lock & Lantern website at [www.klnl.org](http://www.klnl.org) and sign up for our email list. You will receive links to the *KL&L News* when it is published and occasional notifications of events of interest to members. The email list is hosted by MailChimp, which makes it easy to unsubscribe at any time, and KL&L never sells or shares its email list with outside parties. Don't miss important news and announcements - sign up today!

## KL&L Facebook Page

For current news and announcements, visit the Key Lock & Lantern page on Facebook at <https://www.facebook.com/railroadiana>. Up to date information about the Key Lock & Lantern Convention, newsletter & magazine publication, and upcoming shows and auctions is posted on the page. There are also hundreds of photos of modern & historical railroad operations, railroad & transportation memorabilia, and views of recent shows and events. Be sure to "follow" the page, so that posts show up in your news feed.

## KL&L YouTube Channel

The Key Lock & Lantern YouTube channel showcases videos of modern and historical railroad operations, steam train excursions, and KL&L Convention highlights. Visit the channel at <https://www.youtube.com/user/KeyLockLantern>. Be sure to hit the subscribe button and leave comments on the videos that you enjoyed!

## Want Ads for KL&L Members

As noted in previous issues, the "Want Ad" section of the *KL&L News* is undergoing an update to remove outdated notices. If you would like to submit an ad for inclusion in future issues, contact KL&L editor Dave Hamilton at [transportsim@aol.com](mailto:transportsim@aol.com). Basic want ads are free for current Key Lock & Lantern members.

## Member Address Changes & Corrections

The *Key Lock & Lantern* magazine is sent via First Class Mail and is therefore forwarded by the U.S. Postal Service for the designated period following an address change. However, due to the frequency of publication of the magazine, the time for forwarding may expire in between issues, and your magazine may be returned to KL&L. Please make sure that Key Lock & Lantern is on your list of organizations to notify in the event of a change of address. Also, please check your mailing label when receiving your copy of the magazine, and advise KL&L if any corrections are needed. Contact Marie Brainard at [j944wb@aol.com](mailto:j944wb@aol.com) if changes are required.



For News & Information, Visit the KL&L Page on Facebook. Use the link at [www.klnl.org](http://www.klnl.org).

# KEY LOCK & LANTERN

Can Help Promote Your  
**Auction, Show or Event**

With Advertising in KL&L Publications

**2600+ Facebook Followers**

**200+ Daily Website Visits**

**520+ Newsletter Subscribers**

Contact KL&L Editor Dave Hamilton at  
[transportsim@aol.com](mailto:transportsim@aol.com)



**All submissions for the KL&L magazine,  
news items for the digital KL&L News  
& general inquiries should be sent to:**

KL&L President & Editor  
David Hamilton  
E-mail: [transportsim@aol.com](mailto:transportsim@aol.com)

**Send membership applications, dues  
payments, and address changes to:**

KL&L Chairman John Brainard &  
VP-Membership Marie Brainard  
E-mail: [j944wb@aol.com](mailto:j944wb@aol.com)

Join or Renew Your  
**KEY LOCK & LANTERN**  
Membership Online at  
[www.klnl.org](http://www.klnl.org)

## KL&L Membership Form (2024 Membership Year)

Please make check or money order payable to Key, Lock & Lantern, Inc. and forward to:  
Marie Brainard, KL&L Membership, 35 Nordhoff Place, Englewood, NJ 07631-4810

Name \_\_\_\_\_

Representing (business or museum, if applicable) \_\_\_\_\_

Address \_\_\_\_\_

City \_\_\_\_\_ State/Prov \_\_\_\_\_ Zip/Mail Code \_\_\_\_\_

Phone \_\_\_\_\_ E-mail \_\_\_\_\_

Basic membership at \$40 per year (1st Class mailing in USA) or \$60 per year (non-USA).....\$ \_\_\_\_\_

Additional Donation.....\$ \_\_\_\_\_

Enclosed is my check / money order payable to Key Lock & Lantern, Inc. for.....\$ \_\_\_\_\_

Membership in KL&L includes 4 issues of the printed magazine, special member rates for KL&L Convention registration, and access to "members only" content on the KL&L website. New members joining before September will receive all previously published magazines for the year, and will be due for renewal in the following January. New members joining in September or later will have their dues applied to the next membership period, beginning with the Jan/Feb/Mar issue, unless otherwise requested.



# 52nd ANNUAL KEY LOCK & LANTERN CONVENTION

May 9-12, 2024, Carbondale, PA

## KL&L Member Registration Form

**\*\*Check Your Mailing Label. If it shows "182" then you are due to renew your membership.\*\***  
**Please add your dues payment on the appropriate line.**

This year's convention will once again be held at the Hotel Anthracite in Carbondale, PA. On Friday, May 10th, a KL&L excursion train on the Reading & Northern will depart from the Pittston station at 10am (boarding at 9:45am), return at 4:30pm. On Friday night, "room hopping" will take place at the hotel. The Transportation History Expo will be held in the hotel on Saturday, May 11th, with setup & early admission at 7:30am and regular opening at 9:00am. Exhibits and/or items for sale/trade must be related to railroad, transportation & industrial history. No misrepresented or unidentified reproductions allowed. A box lunch is available for attendees to purchase (the hotel restaurant will not be open). The annual meeting & fundraiser sale will take place at 2pm. At 5pm, a buffet dinner and railroad history programs will be held in the hotel's banquet room. The Hotel Anthracite special rate is \$109 per night +tax. The hotel is located at 25 S. Main St, Carbondale, PA, 18407. Call (570) 536-6020 and ask for the Key, Lock & Lantern rate. **Make reservations early - there are a limited number of rooms available!** You may register online at [www.klnl.org](http://www.klnl.org), or use the attached form. Visit the KL&L website for more details. **Please provide all contact information on the form.**

Name: \_\_\_\_\_ Companion(s): \_\_\_\_\_

Address: \_\_\_\_\_

Phone: \_\_\_\_\_ Cell Phone: \_\_\_\_\_

E-Mail: \_\_\_\_\_

***Each member, companion, family member, etc. must register for \$5 each to cover administrative costs. Registration includes Expo admission during regular hours - other activities may be selected as desired.***

KL&L Membership (if your label shows "182" you are due to renew).....\$40 = \_\_\_\_\_  
Registration for each Member & family/companion (includes Expo admission)..... \_\_\_\_\_ x \$5 each = \_\_\_\_\_  
Exhibit/Sales Tables (8-foot) (Includes 2 early admissions for setup)..... \_\_\_\_\_ x \$40 each = \_\_\_\_\_  
Early Admission (Allows non-table holders entry to show during setup hours)..... \_\_\_\_\_ x \$20 each = \_\_\_\_\_  
Saturday Box Lunch (indicate choices below)..... \_\_\_\_\_ x \$12 each = \_\_\_\_\_  
How many \_\_\_\_\_Chicken Salad \_\_\_\_\_Turkey \_\_\_\_\_Ham \_\_\_\_\_Tuna \_\_\_\_\_Roast Beef  
Saturday Buffet Dinner..... \_\_\_\_\_ x \$29 each = \_\_\_\_\_  
Friday Train Ride (Coach Seat)..... \_\_\_\_\_ x \$39 each = \_\_\_\_\_  
Total Submitted..... \_\_\_\_\_

Please make checks or money orders payable to **Key, Lock & Lantern, Inc.** and mail to: **Marie Brainard, 35 Nordhoff Place, Englewood, NJ 07631-4810.** If you have any questions, email John & Marie Brainard at [j944wb@aol.com](mailto:j944wb@aol.com) or call 201-569-9758 between 7 and 9 pm EST any evening, or Dave Hamilton at [transportsim@aol.com](mailto:transportsim@aol.com) or 518-526-6941.

**Please register early** - tables are rented, so last minute requests cannot be filled. Train ride is subject to change in route and equipment. Transportation to the train station is on your own; contact Dave Hamilton if you need a ride. Lunch & Dinner must be reserved in advance - don't forget to order! The hotel is smaller than some previous venues - make reservations early and be sure to speak to someone at the hotel front desk to get the KL&L rate. **If rooms at the KL&L rate are sold out when you call, please contact Marie Brainard.**

***Important: Don't forget to include an email & cell phone on your registration form!***

# 52nd ANNUAL KEY LOCK & LANTERN CONVENTION

May 9-12, 2024, Carbondale, PA

## Non-Member Registration Form

This year's convention will once again be held at the Hotel Anthracite in Carbondale, PA. On Friday, May 10th, a KL&L excursion train on the Reading & Northern will depart from the Pittston station at 10am (boarding at 9:45am), return at 4:30pm. On Friday night, "room hopping" will take place at the hotel. The Transportation History Expo will be held in the hotel on Saturday, May 11th, with setup & early admission at 7:30am and regular opening at 9:00am. Exhibits and/or items for sale/trade must be related to railroad, transportation & industrial history. No misrepresented or unidentified reproductions allowed. A box lunch is available for attendees to purchase (the hotel restaurant will not be open). The annual meeting & fundraiser sale will take place at 2pm. At 5pm, a buffet dinner and railroad history programs will be held in the hotel's banquet room. The Hotel Anthracite special rate is \$109 per night +tax. The hotel is located at 25 S. Main St, Carbondale, PA, 18407. Call (570) 536-6020 and ask for the Key, Lock & Lantern rate. **Make reservations early - there are a limited number of rooms available!** You may register online at [www.klnl.org](http://www.klnl.org), or use the attached form. Visit the KL&L website for more details. **Please provide all contact information on the form.**

Name: \_\_\_\_\_ Companion(s): \_\_\_\_\_

Address: \_\_\_\_\_

Phone: \_\_\_\_\_ Cell Phone: \_\_\_\_\_

E-Mail: \_\_\_\_\_

***Each attendee, companion, family member, etc. must register for \$10 each to cover administrative costs. Registration includes Expo admission during regular hours - other activities may be selected as desired.***

Registration for each Member & family/companion (includes Expo admission)..... \_\_\_\_\_ x \$10 each = \_\_\_\_\_

Exhibit/Sales Tables (8-foot) (Includes 2 early admissions for setup)..... \_\_\_\_\_ x \$40 each = \_\_\_\_\_

Early Admission (Allows non-table holders entry to show during setup hours)..... \_\_\_\_\_ x \$20 each = \_\_\_\_\_

Saturday Box Lunch (indicate choices below)..... \_\_\_\_\_ x \$12 each = \_\_\_\_\_

How many \_\_\_\_\_ Chicken Salad \_\_\_\_\_ Turkey \_\_\_\_\_ Ham \_\_\_\_\_ Tuna \_\_\_\_\_ Roast Beef

Saturday Buffet Dinner..... \_\_\_\_\_ x \$29 each = \_\_\_\_\_

Friday Train Ride (Coach Seat)..... \_\_\_\_\_ x \$39 each = \_\_\_\_\_

Total Submitted..... \_\_\_\_\_

Please make checks or money orders payable to **Key, Lock & Lantern, Inc.** and mail to: **Marie Brainard, 35 Nordhoff Place, Englewood, NJ 07631-4810.** If you have any questions, email John & Marie Brainard at [j944wb@aol.com](mailto:j944wb@aol.com) or call 201-569-9758 between 7 and 9 pm EST any evening, or Dave Hamilton at [transportsim@aol.com](mailto:transportsim@aol.com) or 518-526-6941.

**Please register early** - tables are rented, so last minute requests cannot be filled. Train ride is subject to change in route and equipment. Transportation to the train station is on your own; contact Dave Hamilton if you need a ride. Lunch & Dinner must be reserved in advance - don't forget to order! The hotel is smaller than some previous venues - make reservations early and be sure to speak to someone at the hotel front desk to get the KL&L rate. **If rooms at the KL&L rate are sold out when you call, please contact Marie Brainard.**

***Important: Don't forget to include an email & cell phone on your registration form!***



# KEY LOCK & LANTERN

52nd Annual Convention - May 9-12, 2024

Hotel Anthracite - Carbondale, PA

Railroadiana Show & Sale - May 11th

Lanterns, Timetables, Books, Locks, Photos, Memorabilia,  
Tools, Keys, Ephemera, China, Badges, & More

Special Excursion Train Pittston  
to Jim Thorpe, PA - May 10th

Transportation History Exhibits  
Lectures - Slide Shows - Banquet



[WWW.KLNL.ORG](http://WWW.KLNL.ORG)

Visit the KL&L Website for Registration Information & Free Newsletters



# KEY LOCK & LANTERN

52nd Annual Convention - May 9-12, 2024

Hotel Anthracite - Carbondale, PA

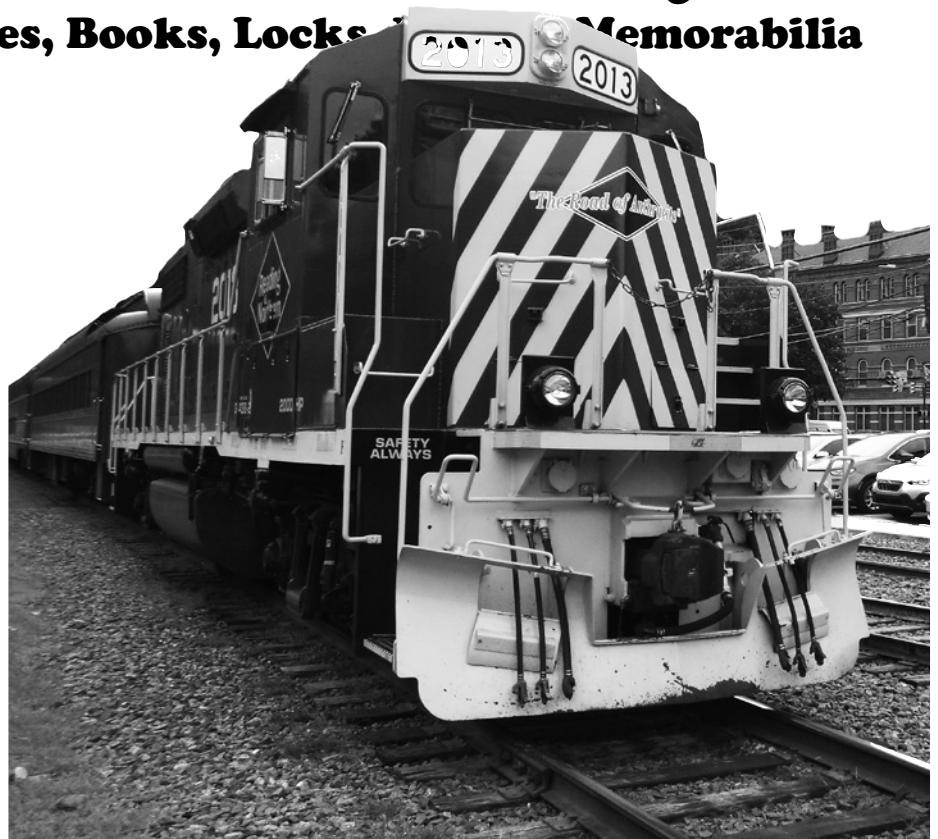
Special Excursion Train Pittston to  
Jim Thorpe, PA - Friday, May 10th

Railroadiana Show & Sale - May 11th

Lanterns, Timetables, Books, Locks & Memorabilia



History Exhibits  
Lectures - Slide Shows  
Banquet Dinner



[WWW.KLNL.ORG](http://WWW.KLNL.ORG)

Visit the KL&L Website for Registration Information & Free Newsletters

