



# KEY LOCK & LANTERN NEWS

Jul/Aug 2025

Issue No.87



*The Bi-Monthly Digital Supplement to Key Lock & Lantern Magazine*



**Railroadiana  
Auction Results**

**Railroad Museum &  
Preservation News**

**KL&L News &  
Announcements**



The Bi-Monthly Digital Supplement to Key Lock & Lantern Magazine  
WWW.KLNL.ORG

July/August 2025 Issue #87

From the President's Desk .....	3
Railroad Event Calendar .....	3
Brookline Railroadiana Auction.....	4
Railroad Memories Auction.....	6
JM Hobby Railroadiana Auction.....	8
Rail & Road Auction Report.....	10
Big Boy Cab Rides.....	12
Schoharie Valley Museum Show .....	13
Southern California Railway Museum Show.....	14
Colfax Railroad Days.....	15
Painesville Railroad Museum Events.....	16
Genesee Valley Transportation Alcos.....	17
Remembering Sam Lombardi & Ken Andrews.....	18
2026 KL&L Convention.....	24
Classified Ads.....	26

The Key, Lock & Lantern News is published bi-monthly as a digital supplement to the quarterly Key, Lock & Lantern magazine. Recipients may repost or forward complete and unmodified copies of this newsletter to other hobbyists and websites, but its content may not otherwise be copied or distributed without the permission of the KL&L Board of Trustees. Copyrights are held by the respective authors and photographers. Excerpts of news items may be published with the credit line "Key, Lock & Lantern News." Descriptions, photos, and prices in auction reports and ads are supplied by the auction companies and do not represent an evaluation or endorsement of value or authenticity by Key, Lock & Lantern.

Annual membership dues for Key, Lock & Lantern are \$40 for residents of the USA, and \$60 for outside of the USA (by money order or electronic payment in US funds). Members receive four issues of the quarterly KL&L magazine, delivered via first class mail. Applications for membership & address changes should be forwarded to the VP-Membership at the e-mail address listed at right. Online membership forms and dues payment via Paypal are available at [www.klnl.org](http://www.klnl.org).

Contributions of articles, photos, and news may be forwarded to the editor at the e-mail address listed at right. The submission of material in digital format is preferred, with text files in DOC, TXT, or PDF format, and images in JPG, TIF, BMP or GIF format. Digital files may be sent by e-mail or on a computer CD or flash drive. Please contact the editor regarding optimum file sizes and formats, or for the submission of hard copy material.

By submitting material to Key, Lock & Lantern, the contributor grants permission for use in any edition of the KL&L magazine, digital newsletter, websites, and other publications. All material will be retained by KL&L for future use, unless the contributor specifically requests that it be returned, and includes a suitable, self-addressed, stamped envelope. Current deadlines are listed in the Key, Lock & Lantern Advertising Guide, which is available on the KL&L website at [www.klnl.org](http://www.klnl.org), or by contacting the editor.

## Key, Lock & Lantern

A non-profit membership corporation dedicated to the preservation of transportation history and railroad memorabilia

*The mission of Key, Lock & Lantern is to gather and publish information on the history of the transportation industry, and to support the preservation of railroad artifacts. KL&L members have an interest in all aspects of railroad & transportation history, from research and preservation projects to the conservation and restoration of all types of historical memorabilia. Originally formed in 1966, Key, Lock & Lantern, Inc. was officially incorporated in 1988 as a non-profit, educational, membership corporation in the State of New Jersey, under the provisions of Section 501(c)(3) of the United States Internal Revenue Code. Membership is open to anyone with an interest in transportation history and in achieving the goals of the organization.*

## Officers & Trustees

### Chairman of the Board

John Brainard  
[j944wb@aol.com](mailto:j944wb@aol.com)

### President & Editor

David Hamilton  
[transportsim@aol.com](mailto:transportsim@aol.com)

### VP- Membership / Treasurer

Marie Brainard  
[j944wb@aol.com](mailto:j944wb@aol.com)

### Secretary

Jeremy Tuke

### Chaplain / Sgt at Arms

Chip Greiner

### Historian

Peter Gores

### Trustees at Large

Lyman Gray, Joel Shaw, Leonard Gordy, Bob Lipman, Randy Bushart, William Sternitzke, Bill Roberts, Bob Myers, Joey Senese, Matthew Bushart, Michael Decker

[www.klnl.org](http://www.klnl.org)



For Current News  
"Like" KL&L on

facebook



## From the President's Desk.....

It seems that I have been spending a greater amount of time writing obituaries for KL&L board members in recent months. It is a plain fact that time marches on and we all will reach the end of the line some day, but it still is a sad occasion when we lose one of our friends. It also serves as a reminder to attempt to enjoy every day, because we never know what the next week will bring.

As collectors, we likely worry about what will happen to all of the things that we have accumulated once we are gone. We acquire transportation memorabilia because it has some degree of importance to us, to the extent that we feel that it should be preserved. When we are no longer its caretaker, we would like to think that it will be passed along to someone else who will do the same.

While most of us aren't as concerned about the monetary value of our collections, we should at least let those family members who will be responsible for handling it know that it does represent a significant investment. This fact will hopefully keep them from simply throwing things away, and will encourage them to seek an auction house or other means of maximizing the sale price. If specific information regarding the disposal of a collection isn't made part of a will, then it is a good idea to at least leave some auction flyers and KL&L magazines with a collection, to give family members an idea of where to start.

An area that is often overlooked is the research that we have done about the artifacts in our collections and transportation history in general. While a nickel plated conductor's lantern will likely be recognized as valuable, a file box containing hand written notes from years of research might not be as obvious. The same goes for original railroad documents and ephemera that have historical significance, but look like a pile of musty old papers. Boxes of that sort of material should be labeled, with instructions regarding who should receive them.

Better yet, we shouldn't simply leave unfinished research for the next historian to continue the process. We sometimes feel the need to gather every piece of information before publishing or sharing the results of our work, but we risk having it never see the light of day if we wait too long. A KL&L article that is a "Part 1" or "here is what we have found so far" is better than a complete one that is never put to paper.

Thinking back to the KL&L conventions where I spent time with our recently departed friends, I remember how they welcomed me into the group and shared their knowledge of history and collecting. The phrase "pay it forward" is perhaps overused these days, but since we can't always return the favor to those who have helped us in the past, the next best thing is to follow their example and do something good for someone who is new to the hobby.

As always, thanks for your ongoing support of KL&L, and the next magazine will be going to press soon!

*Dave Hamilton*

KL&L President & Editor

## Railroad Event Calendar



**Upcoming historical society conventions, special events, railroadiana shows & auctions. Listings subject to change. Check show web sites before traveling and visit [www.klnl.org](http://www.klnl.org) for updates. See submission guidelines at the end of the calendar.**

**Look for Advertisements in this Issue & on the Key Lock & Lantern Website for [Events Shown in Blue](http://www.klnl.org)**

- Jul 26**      **Painesville, OH** - Painesville Depot Hobo Day Railroad Flea Market.  
http://painesvillerrailroadmuseum.org.
- Jul 26**      **Prescott, AZ** - Central Arizona Model Railroad Club Train Show  
Info: <https://camrrc.com/>.
- Jul 26-27**   **Luxemburg, WI** - JM Hobby Supply & Railroad Artifacts Railroadiana Auction.  
Info: <http://www.jmhobbysupply.com>.
- Aug 8-9**     **Suffolk, VA** - Virginia Train Collectors Summer Tidewater Train Show..  
Info: <https://www.vatraincollectors.com>.
- Aug 9**      **Marion, OH** - Summerail Railroad Programs & Railroadiana show.  
Info: <https://www.summerail.com/>.
- Aug 9**      **Joplin, MO** - Joplin Museum Train Show.  
Joplin Museum Complex.  
Info: [www.tristatemodelrailroaders.com](http://www.tristatemodelrailroaders.com).
- Aug 13-14**   **Lafayette, IN** - Railroadiana & Transportation Auction. Rail & Road Auctions.  
Info: <https://rarauctions.com>
- Aug 16**     **Como, CO** - Boreas Pass Railroad Day - South Park Rail Society.  
Info: <https://southparkrailsociety.org/>.

*Continued on Page 27*

Front Cover: Restored Union Pacific Big Boy Locomotive 4014 pulls an excursion train.  
Photo Courtesy of Union Pacific Railroad.

# Several Large Collections Continue to be Sold by Brookline Auction Gallery

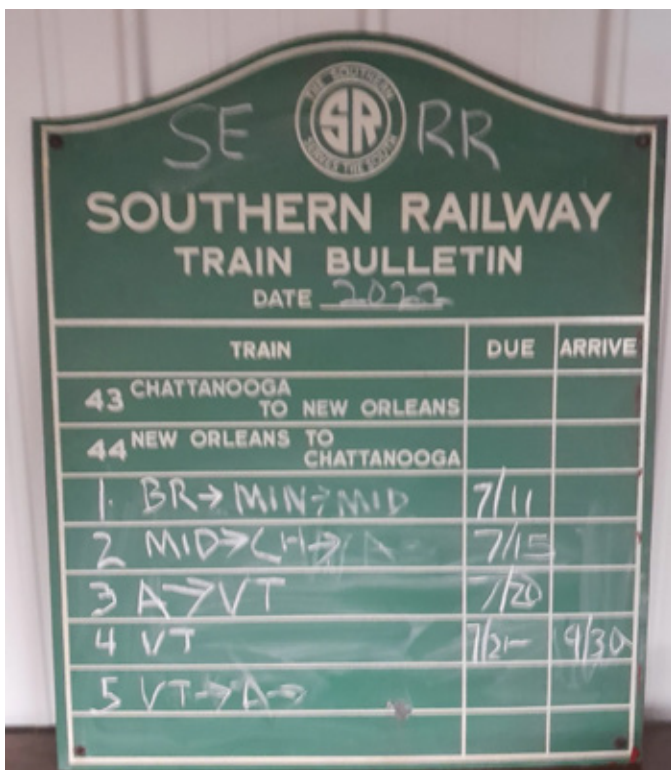
A variety of rare and unusual railroadiana continues to flow through the Brookline Auction Gallery, with several large collections being sold. While many auctions have shifted to an online-only format, Brookline continues to hold onsite sales, with online bidding also offered. *Photos, descriptions and prices realized courtesy of Brookline Auction Gallery and do not include buyers premiums and shipping.*



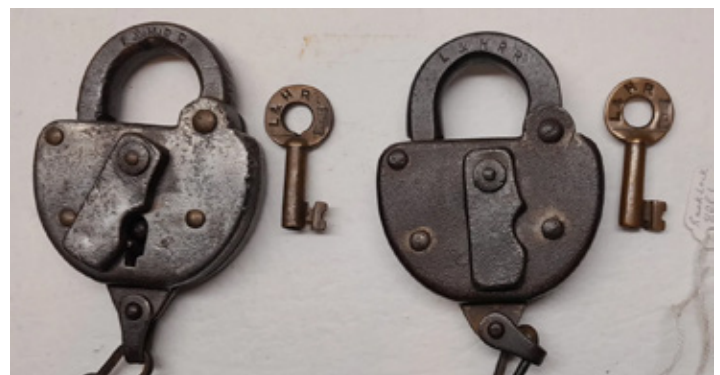
A Boston & Maine Railroad Bar Harbor pattern 6 1/2" compote by M&L China sold for a high bid of \$325.



A Portland & Ogdensburg RR Adams & Westlake brass top with green cast Maine Central globe sold for \$5000.



A \$2100 bid bought this steel Southern Railway bulletin board from the Chattanooga to New Orleans route.



An \$1800 bid was needed to buy this pair of Lehigh & Hudson River Railroad locks with matching Fraim keys.

Continued on Page 20



# Railroadiana Auctions - Spring & Fall - Brookline, NH

Railroadiana Consignment Auctions Held Each Spring & Fall

Brookline Auction Gallery LLC - 32 Proctor Hill Rd, Brookline, NH 03033

**[www.brooklineauctiongallery.com](http://www.brooklineauctiongallery.com)**

Scott Czaja - Sales Manager

***Next Sale: October, 2025***

***Now Accepting Consignments for the Fall Auction***



In-house online bidding this fall - We also accept absentee bids via: e-mail & mail  
Quality consignments are welcome for future sales - email Scott: [sczaja@hotmail.com](mailto:sczaja@hotmail.com)



# Railroad Memories Auction 122 Features Large Variety of Rare Memorabilia

Railroad Memories continues to offer high end railroadiana in its catalog and online auctions, with several well known collections gradually being dispersed to new owners. There is much more to come in upcoming sales, with the usual selection of western material and some from the east coast. *Photos, descriptions and prices realized courtesy of Railroad Memories Auctions and do not include buyers premiums and shipping.*



*A high bid of \$525 purchased this Los Angeles & Salt Lake RR police badge by Los Angeles Rubber Stamp Co.*



*A Hopi-inspired "Mother Earth" plaque from a Budd built Santa Fe El Capitan car went to new home for \$7500.*

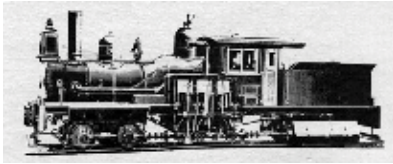


*A Denver & Rio Grande Railroad brass top with clear cast D&RG RR globe sold for a high bid of \$17,250.*



*A \$725 bid took home this Duluth & Manitoba Railroad tapered barrell brass key made by J.L. Howard.*

*Continued on Page 21*



# Railroad Memories

Offering Quality Railroadiana Since 1987  
Now Accepting Consignments for Auction 123



RARE Santa Fe  
Illuminated panel



STL&ATHRR  
tapered key



Rare Badges



Beautiful D&RGRR  
BT/BB Lantern



D&IRRR  
Tapered Key



Santa Fe  
Mother Earth Kachina



Builders Plates



Brass lanterns



Presentation Lanterns



Santa Fe Crews  
Quarter Clock



Santa Fe  
Kachina Plaque



SP Mission Service Plate



W&STPRR  
Tapered key



Rare Santa Fe  
Badges



More Locks from  
the Kidd Museum



V&M RR  
Tapered key



Passes Including Colorado



Columbine China

P.O. Box 415

Georgetown, Colorado 80444

Phone: 303-569-5185

Email: [railroadmemories@gmail.com](mailto:railroadmemories@gmail.com) Website: [www.railroadmemories.com](http://www.railroadmemories.com)



# JM Hobby Supply Offers Memorabilia from Several Collections in Recent Auctions

The spring auction by JM Hobby Supply & Railroad Artifacts had something for every collector, from top shelf memorabilia to reasonably priced lots. A large collection of model trains rounded out the two day sale. There are more collections on deck for the spring auction, and consignments are still being accepted for upcoming sales. *Photos, descriptions and prices realized courtesy of JM Hobby Supply & Railroad Artifacts and do not include buyers premiums and shipping.*



A Central Railroad of New Jersey police badge by F.G. Clover of New York sold for a high bid of \$130.



A \$60 bid was needed to purchase this 1893 Rand McNally & Co. color railroad map of the state of Minnesota.

Continued on Page 22



A \$550 bid purchased this Adams & Westlake 1895 patent switch lamp with an applied "C.C. & C.S." tag.



A 24" cast iron Passengers Must Keep Off The Platform Until the Train Stops sign went to a new home for \$450.

## KEY LOCK & LANTERN

Can Help Promote Your  
**Auction, Show or Event**

Contact KL&L at [transportsim@aol.com](mailto:transportsim@aol.com)



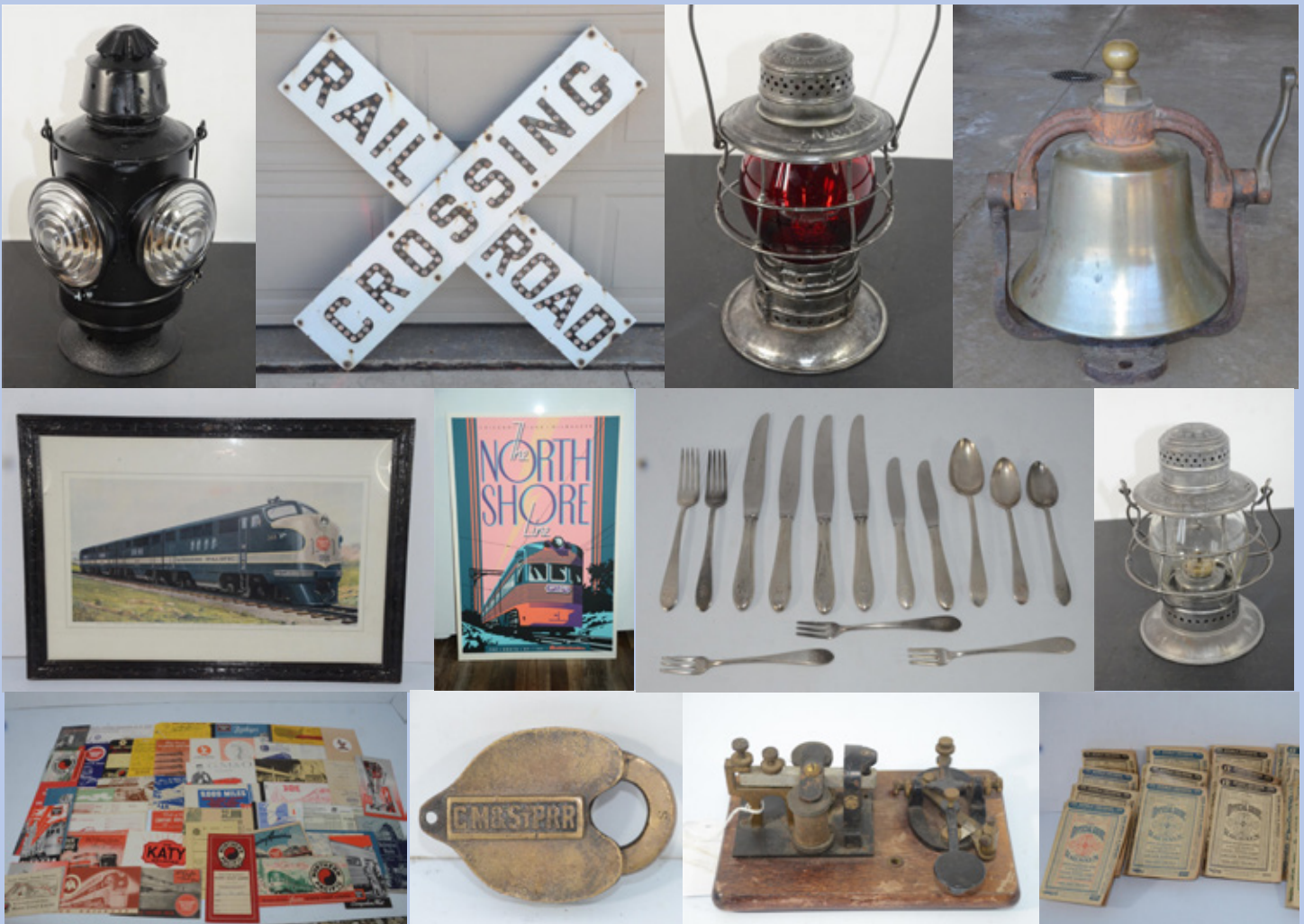
# JM HOBBY SUPPLY & RAILROAD ARTIFACTS

## Railroadiana Auctions

In Conjunction with Ihander Auctioneering

Two Day Sale of Hardware, Paper, & Model Trains

**July 26-27, 2025**



**WE OFFER THE LOWEST SELLERS COMMISSIONS AND BUYERS FEES IN THE U.S.A!**

**SHIPPING IS AT ACTUAL COST....NOT INFLATED!**

Call us today to discuss selling your collection at 920-857-9670!

PO Box 25, Luxemburg, WI 54217

Online bidding will be available on Hi-Bid

Email us at [jmhobbysupplyandrrartifacts@gmail.com](mailto:jmhobbysupplyandrrartifacts@gmail.com)

Or visit our website at [www.jmhobbysupply.com](http://www.jmhobbysupply.com)

# Rail & Road Continues to Hold Monthly Auctions with a Variety of Railroadiana

Rail & Road Auctions is not slowing down, with live online auctions held monthly, featuring memorabilia of every sort from all over the country. From higher end artifacts to bargain lots for newer collectors, there has been something for everyone in recent auctions, with plenty to come in upcoming sales. *Photos, descriptions and prices realized courtesy of Rail & Road Auctions and do not include buyers premiums and shipping.*



*A \$2500 bid took home this Baltimore & Ohio Railroad Train Porter badge by Robbins & Co. of Attleboro, MA.*



*A 24" double-sided Philadelphia Red Arrow Lines "Car Stop" sign went to a new collection for an \$800 bid.*



*A \$350 bid purchased this Chicago Transit Authority subway roll sign in wooden frame with operating crank.*



*A shoulder-marked Lehigh Valley Transit Company lantern by Armspear with unmarked globe sold for \$1100.*



*An \$850 bid was needed to buy this amazing full size display of Chicago Transit Authority hardware.*

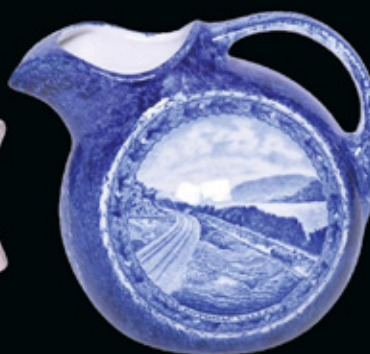
*Continued on Page 23*



# RAIL & ROAD AUCTIONS

Now Accepting Consignments for  
2025 Railroad & Transportation Auctions

Next Auctions - August 13-14, 2025



View the catalogs on our website & register to bid.  
Rail & Road offers online, absentee, and telephone bidding.



## RAIL & ROAD AUCTIONS

[WWW.BIDRAR.COM](http://WWW.BIDRAR.COM)

765-412-7926



# Union Pacific Big Boy Cab Rides Raise \$79,000 For UP Museum

As part of this year's Union Pacific Big Boy summer excursion schedule, the Union Pacific Railroad Museum sponsored four exclusive cab rides between Cheyenne, Wyoming, and Denver, Colorado. The seats were auctioned off by Rail & Road Auctions, with all proceeds going to the museum, a nonprofit that shares American history through the lens of the railroad. The auction closed on June 23rd, with a total amount raised of \$79,000.

The lucky bidders rode the massive locomotive on July 17, 2025, as part of Big Boy's preparations for Cheyenne Frontier Days, with two riders in the cab on July 17 inbound into Greeley, Colorado, and two riders in the cab July 17 inbound to Denver, Colorado.



Although this year's excursions are limited, Big Boy will return to the rails in a big way in 2026 to celebrate America's 250th anniversary. The 2025 excursion schedule calls for the locomotive to depart from Cheyenne, Wyoming on July 17th and depart from Greeley, Colorado on the return trip on July 19th. Twenty-five Big Boys were built during World War II, but only eight survived. No. 4014 is the only one of the eight still in operation and remains the world's largest operating steam locomotive.

To stay informed about Big Boy's schedule and future steam excursions, join the Union Pacific Steam Club at [up.com/SteamClub](http://up.com/SteamClub). A map showing No. 4014's location and route will be available during the trips on [upsteam.com](http://upsteam.com). *News & photos courtesy of Union Pacific, the Union Pacific Railroad Museum, and Rail & Road Auctions*

## KEY LOCK & LANTERN

Ads Reach Serious Railroad Enthusiasts  
Contact KL&L at [transportsim@aol.com](mailto:transportsim@aol.com)



*Union Pacific Big Boy #4014 makes the run to the 2025 Cheyenne Frontier Days with guest cab riders.*



*Four lucky bidders had the ride of a lifetime in the cab of the Union Pacific Big Boy enroute to Denver, CO.*



# Schoharie Valley Railroad Museum to Host 2025 Annual Model Train Show & Sale

The Schoharie Valley Railroad Museum will be holding its annual Train Show on Saturday, September 20, 2025, on the grounds of the museum in Schoharie, NY. Vendors will fill the old Mill Building with model trains, supplies, books, and memorabilia, along with displays from local historical groups. Previous year's exhibitors included several collectors of railroadiana, and there were also some deals to be found on original railroad artifacts mixed in with the model trains.



*A vendor of railroadiana at the 2022 Schoharie Valley Railroad Museum Train Show. Photo by Dave Hamilton.*

The show will be held from 10am to 4pm, with an admission fee of \$6 for adults and free for kids. The museum complex is located at 143 Depot Lane in Schoharie, off Route 30, and an easy drive from Interstate 88 between Albany and Oneonta. All proceeds from the event will help support the activities of the museum.

The Schoharie Valley Railroad Museum is part of a group of local museums and historic sites operated by the Schoharie Colonial Heritage Association. The museum will be open to visitors during the show, with buildings including



*The museum's lumber mill building is filled with vendors for the annual train show. Photo by Dave Hamilton.*



*The Schoharie Valley Railroad Museum includes several buildings and rolling stock. Photo by Dave Hamilton.*

the original station house and freight house/engine house used by the Schoharie Valley and Middleburgh & Schoharie Railroads. Other structures preserved on the grounds include the Borden's Creamery and John Fain Co. coal weigh station and office building.

The museum collection also includes an 1891 combine car used in passenger service on the Middleburgh & Schoharie Railroad, a 1917 Delaware & Hudson Railroad wooden caboose, and several freight cars. A variety of memorabilia related to local railroads and industries is on display in the museum, along with a model train layout.

Nearby museums include the affiliated 1743 Palatine House and the Schoharie County Historical Society's Old Stone Fort Museum. For information about the railroad museum and show, visit [www.schoharieheritage.org](http://www.schoharieheritage.org).



*Museum buildings contain exhibits of local railroad and industrial history. Photo by Dave Hamilton.*



# Southern California Railway Museum to Hold Annual Fall Railroadiana Swap Meet

The Southern California Railway Museum (formerly the Orange Empire Railway Museum) will hold its annual Fall Railroadiana Swap Meet on Saturday, September 13, 2025, on the grounds of the museum in Perris, CA. Billed as the largest outdoor railroadiana swap meet in California, dozens of vendors will be selling a variety of antiques and railroad memorabilia.

In addition to authentic railroad artifacts, there will be all types of collectibles, art, books, models, and toy trains for sale. Railroad historians and preservationists will be on hand to tell the story of Southern California's railway history. This event will be not only be of interest to railroad collectors, but fun for the entire family.



The show is included with general admission to the museum, which is \$10 for adults and \$9 for children, or \$15 for adults and \$14 for children for admission and tickets for the train and trolley rides. The event runs from 9am to 2pm, and additional information is available on the museum's web site at <https://socalrailway.org>. *News & photos courtesy of the Southern California Railway Museum.*



**Railroad Museums &  
Historical Societies**

Send in news & photos to

**KEY LOCK & LANTERN**

E-mail: [transportsim@aol.com](mailto:transportsim@aol.com)



# Colfax Celebrates Transcontinental Railroad History With Annual Railroad Days Festival

Colfax, California will celebrate its role in the construction of the Transcontinental Railroad during its annual Railroad Days festival on September 13th & 14th, 2025. A variety of family-oriented and kid-friendly events will take place in downtown Colfax between 10am and 5pm each day.

Attractions will include the Black Flag Gang from Old Sacramento, the Mormon Battalion Pioneer re-enactment group, and history tours. There will be several model train layouts, and the Lego train exhibit for the kids. Numerous craft and food vendors are expected to attend.

Railroad enthusiasts will enjoy modern locomotives and rolling stock from the Union Pacific Railroad, that will be on display and open to the public for tours. Railroad history displays and local antique shops will also be of interest to railroad collectors and history buffs. For more information and schedules, visit <https://colfaxrailroaddays.com>. *News and photos courtesy of Colfax Railroad Days.*



## KEY LOCK & LANTERN

Can Help Promote Your  
Auction, Show or Event  
Contact KL&L at [transportsim@aol.com](mailto:transportsim@aol.com)



# Painesville Railroad Museum to Hold Summer & Fall Events & Flea Markets

The Painesville Railroad Museum, located in the former Lake Shore & Michigan Southern station in Painesville, OH has a variety of events planned for this summer and early fall. All events include activities that are of interest to both serious railroad historians and families and include a railroad flea market with vendors of model trains and memorabilia.

On June 26th, the museum is sponsoring "Hobo Day" with a cookout, costume contest, and live music. "Northeast Ohio Historical Day" will take place on August 23rd, with exhibits and representatives from local historical societies and book signings by railroad authors. September 21st is "Railfanning Day" at the museum, with museums exhibits open and train watching on the active CSX mainline.

All events are open from 10am to 3pm at the museum on Railroad Street in Painesville, and include the flea market at the depot and refreshments. For more information, visit <http://painesvillerrailroadmuseum.org/index.htm>. *Photos by Painesville Railroad Museum.*



## KEY LOCK & LANTERN

Can Help Promote Your  
Auction, Show or Event

Contact KL&L at [transportsim@aol.com](mailto:transportsim@aol.com)



# Genesee Valley Transportation Returns Alco PA to Service & Repaints D&H RS-3



Genesee Valley Transportation and Delaware-Lackawanna Railroad has repainted historic former D&H RS-3, #4068 into the Delaware & Hudson lightning stripe scheme at their Von Storch shop in Scranton Pennsylvania. The locomotive had been previously painted in the early D&H freight scheme and operated on the Delaware-Lackawanna.

It was repainted to reflect and commemorate the rich railroad history of northeast Pennsylvania and the influence the Delaware & Hudson railroad had on the industrial development of the region. The classic blue and grey is a testament to former D&H Penn Division, a portion of which is now operated by the the Delaware-Lackawanna and owned by the Pennsylvania Northeast Regional Rail Authority (PNRRA).

In additional news, restoration of PA-1, DL #190 has been completed, and inaugural trips were operated on July 11th and 12th. Attendance on these trips was by invitation only, and were the first use of the 190 (Former D&H 18) since being wrecked in Mexico and repatriated through the efforts of Doyle McCormack. Mr. McCormack was on hand for this historic occasion and first run over the railroad. Future public excursions planned with the PA #190 later this summer. *News courtesy of Genesee Valley Transportation, photos by Bill Moll.*



## KEY LOCK & LANTERN

Ads Reach Serious Railroad Enthusiasts  
Contact KL&L at [transportsim@aol.com](mailto:transportsim@aol.com)



# *KL&L Remembers Board Members Sam Lombardi & Ken Andrews*

While organizations such as Key Lock & Lantern rely on all of their members to help achieve the group's goals, there have been a few individuals in KL&L over the years who have played a major role in its success. Sadly, KL&L recently lost two of those members - long time board members who made significant contributions to its publications, the annual convention, and the railroading collecting hobby in general.

Ken Andrews was one of the original "old timers" in the organization, who often exhibited at the KL&L Convention when it was held in Albany. He contributed numerous photos

of memorabilia in his collection for publication in the Key Lock & Lantern magazine, and always brought something interesting to the convention to be photographed. During periods when member submissions were light, he could be counted on to provide interesting material to fill in the gaps.

A long-time member remembers Ken as being among the group of "gentlemen" of KL&L; someone who was always a fair trader and helpful to new collectors. While collecting railroading can be highly competitive, Ken was courteous in his dealings with other collectors, and was happy to share his knowledge of history and memorabilia.



*Ken Andrews (right) discusses railroad history with Lyman Gray at the 2009 Key Lock & Lantern Convention.*



*Ken Andrews shares memorabilia from his collection in his exhibit at the 2008 Key Lock & Lantern Convention.*

In addition to his contributions to the KL&L magazine, Ken was a trustee on the Key Lock & Lantern board for many years, retiring from that position in 2012. His long tenure and experience on the board were invaluable to the organization's efforts to expand and reimagine its mission as it transitioned into the internet age.

Ken Andrews passed away on January 25, 2025, at the age of 93, in his home in Langhorne, Pennsylvania. He will always be remembered by Key Lock & Lantern members for his many contributions to the organization, and by his fellow collectors who enjoyed his company at KL&L events and railroading shows.

*Continued on Page 19*





*Sam Lombardi assists with the annual meeting at the Key Lock & Lantern Convention in Carbondale, PA.*

Sam Lombardi discovered Key Lock & Lantern in the early 1990s, when he read about the group in Richard Barrett's lantern book. It didn't take long for Sam to volunteer to become more involved with KL&L, and he and his wife Pat took over as co-editors of the magazine in 2000. During the period that they managed the publication, Sam and Pat introduced color covers, switched to computer design and layout, and arranged for a new printing company.

The next ten years were probably the most challenging for Key Lock & Lantern, as many of the old timers passed away and membership began to decline. Despite these hurdles, Sam and Pat managed to produce a quality magazine, often working with minimal amounts of contributed material. Their hard work kept KL&L moving forward when it faced the real possibility of fading away.

Sam was a "low profile" collector who was rarely seen at major auctions, but he assembled an impressive collection by scouring flea markets around metropolitan New York and the Catskills. He often brought something interesting to the Key Lock & Lantern Convention that he had discovered at antique shops on his way to Albany.



*Sam and Pat Lombardi served as co-editors of the Key Lock & Lantern magazine from 2000 through 2009.*

Besides all of the work that they did for KL&L, Sam and Pat were great people to know, and many members counted them among their friends. Those who regularly joined them for dinner at the hotel restaurant in Gaithersburg enjoyed long evenings of conversations about railroad history and almost everything else.

Sam resigned from the position of magazine editor when Pat passed away in 2009, but remained on the KL&L Board of Trustees. He was a regular volunteer at the Key Lock & Lantern Convention, assisting at the registration table and with the fundraiser auction. Despite increasing health issues, he continued to make the trip to the conventions and board meetings each year through 2024.

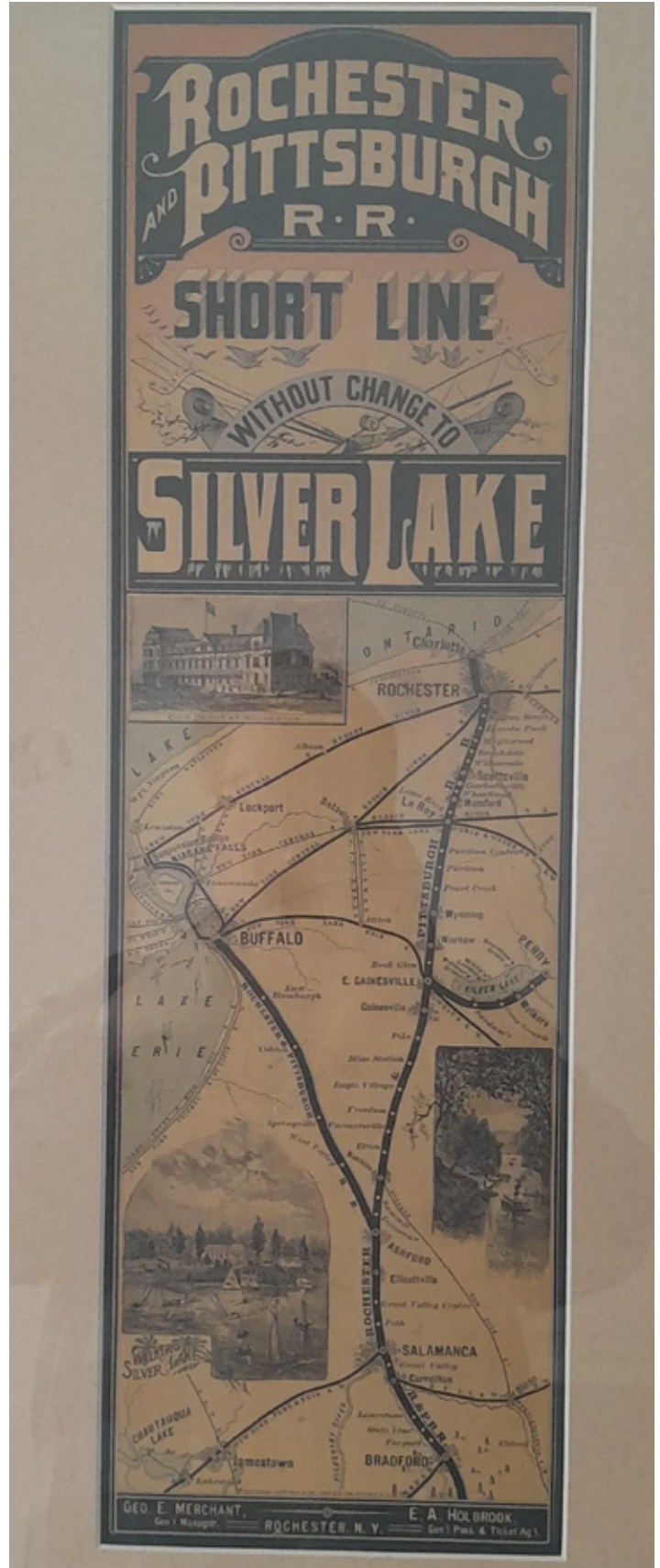
Sam Lombardi passed away on July 4, 2025, at the age of 74, reuniting with his wife Pat. His work for the organization will long be appreciated, and his friendship will always be remembered by the members of Key Lock & Lantern.



*Sam Lombardi mans the registration table with John & Marie Brainard at the KL&L Convention in Scranton, PA.*



A bid of \$550 purchased this New England Glass fixed globe lantern cut for the Portland Saco & Portsmouth.



A Rochester & Pittsburgh Railroad broadside for service to Silver Lake went to a new home for a \$5600 bid.



A 10" chamber three-chime brass whistle by Crosby went to a new collection for a high bid of \$1600.

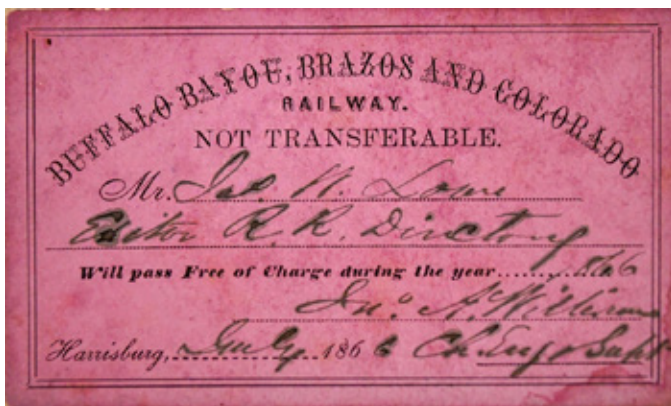




A Mission San Miguel Arcangel 10" Southern Pacific service plate went to a new collector for a \$3700 bid.



A \$460 bid purchased this set of Denver & Salt Lake Railroad Moffat Tunnel 5x5" brass bookends.



An 1866 Buffalo Bayou, Brazos & Colorado pass issued to J.W. Low of the Railway Directory sold for \$1350.



A 32-inch Seth Thomas clock from the Santa Fe Railroad San Bernadino agents' office sold for \$5500.



A \$1400 bid took home this set of silver flatware from the Duluth Missabe & Northern business car Northland.

**KEY LOCK & LANTERN**

Ads Reach Serious Collectors

Contact KL&L at [transportsim@aol.com](mailto:transportsim@aol.com)



A switch lamp with an 1886, 1888 & 1895 patent tag and an applied "MID. T. RY." tag sold for a \$500 high bid.



A Pennsylvania Railroad lounge car smoking stand with keystone logo sold for a high bid of \$275.



A \$170 bid took home this Union Pacific semaphore lamp made by Adams & Westlake Company of Chicago.



A high bid of \$325 was needed to add this 29 x 12" cast iron Beware of Trains sign to a new collection.

**KEY LOCK & LANTERN**

**Ads Reach Serious Collectors**

**Contact KL&L at [transportsim@aol.com](mailto:transportsim@aol.com)**





*An Ann Arbor Railroad Station Agent cap badge by American Railway Supply sold for a bid of \$425.*



*The Lehigh Valley Traction 38" wooden station sign from Lansdale, Pennsylvania sold for a high bid of \$1150.*



*A \$775 bid took home this Chicago Transit Authority subway roll sign in original metal housing.*



*A 48" porcelain Wayne - St. Davids sign from the Philadelphia & Western Railroad sold for \$1350.*



*A number & builders plate set from Montreal Locomotive Works Canadian National 0-6-0 #7355 sold for \$2500.*



*A \$3400 bid was needed to purchase this Chesapeake & Ohio Railroad club car smoking & drink stand.*



*An 18" brass Pennsylvania Railroad emblem mounted on a wooden panel sold for a high bid of \$375.*

# Railroad Historical Societies Invited to Participate in 2026 KL&L Convention

In its early days as a newsletter for collectors of railroad hardware, Key Lock & Lantern subscribers often arranged informal gatherings to trade memorabilia. It was from these small get-togethers that KL&L began to grow from a simple publication into an organization for railroaders collectors. By the time Forbes Hauptman and Irwin Lloyd started the formal Key Lock & Lantern Convention in the early 1970s, KL&L membership had become diversified to include hobbyists who had an interest in almost every aspect of railroad history and collecting.

With the move from its longtime home in Albany, NY to Utica, NY and later Scranton, PA, the Key Lock & Lantern Convention expanded from primarily being a railroaders show to include excursions, lecture programs, and related events. Registration for the convention was also opened up to all collectors and railroad history buffs, and attendance at the show more than doubled, while still maintaining the close-knit atmosphere for which it was known.



Today, at its current home of the Hotel Anthracite in historic Carbondale, PA, the KL&L Convention not only continues to be a premier event to trade memorabilia, but it also offers an excellent networking opportunity for railroad historians. Public trains shows usually require exhibitors to be “tied” to their booths, and the busy schedules of historical society conventions often leave less time to visit with other attendees. The casual atmosphere of the Key Lock & Lantern Convention allows participants to meet other like-minded individuals and share information about their research and historical preservation projects.

To help facilitate this exchange of ideas, and to encourage more serious historians and preservationists to attend the convention, KL&L is offering a limited number of exhibit tables at the show to other non-profit railroad historical societies. The table fee will be waived for qualifying groups, and representatives will only be required to pay the fees for other events that they attend.



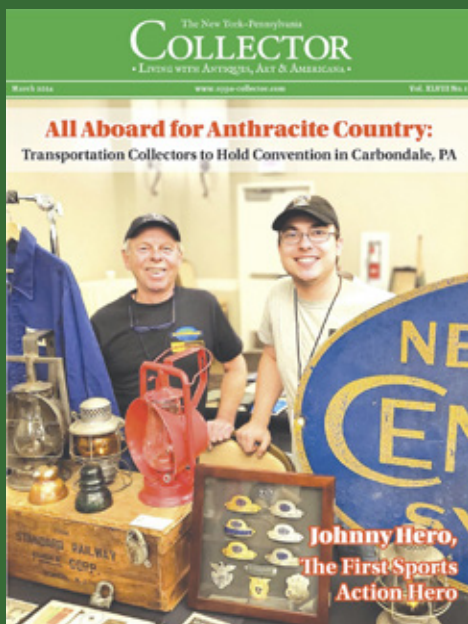
The 2026 Key Lock & Lantern Convention will once again be held at the Hotel Anthracite in Carbondale, PA, with the show taking place on Saturday, May 9, 2026. For additional information about participating in the convention, please contact Dave Hamilton at [transportsim@aol.com](mailto:transportsim@aol.com).



# The New York-Pennsylvania COLLECTOR

Living with Antiques, Art & Americana

A Monthly Publication Featuring News & Articles  
About Antique Collecting & History



18 - April 2025 - New York-Pennsylvania Collector

## Get Onboard with Railroad's Past

Continued from Page 17

it organization dedicated to the preservation of transportation history and memorabilia. There are over 80 issues of the group's newsletters available for viewing and downloading on

ia Collector

## Time Like the Present to d with Railroad's Past



The Key Lock & Lantern Convention offers the opportunity to network with other historians and view museum quality exhibits of memorabilia.



Tickets please! A Pennsylvania Railroad conductor's hat badge provides a reminder of the days of the luxury Broadway Limited train.

Railroadiana collections often feature larger artifacts such as signs and locomotive parts. This Pennsylvania Railroad action sign is from a junction near Buffalo.

houses that specialize in railroadiana, and many dealers at shows have recently added new finds to their stock. Although higher end memorabilia still commands top dollar, many serious collectors are thinning out to make room on the shelf for these new purchases, and common artifacts are now selling for more reasonable prices.

Needless to say, it is important to first acquire some basic knowledge before bidding at an auction or making a deal at a show. There are many railroad-theme decorations, reproductions, and fakes out there, masquerading as genuine artifacts. Experienced collectors properly identify



A piece of memorabilia of railroadiana, this New York & Hudson RR candelabra lantern is from the early 1900s.

It didn't take long for con to create suburbs around this 1865 Hudson Riv

Streetcar and bus way to add memo form of transpo

Collectors of ironware may recognize the name J.A. Groves, who also briefly produced locks for the New York Central Railroad during the 1880s.

at auction for \$3,600 doesn't mean that the dozens of New York Central Vestas that are currently hanging in antique shops are a bargain for \$150. Of course, the answer to the question of "what is it worth?" is simply whatever makes both the buyer and seller happy.

An excellent source of information about railroadiana is the website of Key Lock & Lantern, a non-profit from the Lehigh & Hudson River Railroad recently sold

Continued on Page 16

New York-Pennsylvania Collector - April 2025 - 17



A new generation has added items such as Amtrak memorabilia to the category of "historical memorabilia." This timetable shows trains on the first day of service



- Auction & Show Listings
- Club Meetings & Events
- Identification & Fakes
- Antique Restoration Tips
- Museums & Historic Sites
- Dealer & Flea Market Ads

Read Current & Past  
Issues Online at:

[www.nypa-collector.com](http://www.nypa-collector.com)

**NYPACollector**

# CLASSIFIED ADS

Classified ad listings are free for Key Lock & Lantern members. Ad size must fit in four lines, and must include a name and contact email address (the word "at" may be substituted for "@" in the email address, if desired) or website address. A maximum of two ads per person may be run at the same time. Send ads to Dave Hamilton at [transportsim@aol.com](mailto:transportsim@aol.com).

## Auctions

**Brookline Auction Gallery.** Brookline, NH. Railroadiana consignment & estate auctions. Contact sales manager Scott Czaja at [sczaja@hotmail.com](mailto:sczaja@hotmail.com) or visit [www.tagtown.net](http://www.tagtown.net).

**JM Hobby Supply & Railroad Artifacts.** Luxemburg, WI. Railroadiana consignment & estate auctions. Contact John DeBeck at [jmhobbysupplyandrrartifacts@gmail.com](mailto:jmhobbysupplyandrrartifacts@gmail.com) or visit [www.jmhobbysupply.com](http://www.jmhobbysupply.com).

**Railroad Memories.** Georgetown, CO. Online consignment & estate auctions. Contact Sue Knous at [railroadmemories@gmail.com](mailto:railroadmemories@gmail.com) or visit [www.railroadmemories.com](http://www.railroadmemories.com).

**Rail & Road Auctions.** Lafayette, IN. Online railroadiana auctions. Contact Derek Thomas at [info@RARAuctions.com](mailto:info@RARAuctions.com) or visit <https://rarauctions.com>.

## Locks & Keys

**Wanted: Switch Key** from the Baltimore Transit Company (B T Co.) Will pay a good price for a key in decent condition. Dan Allen: [NJSRR\(at\)aol.com](mailto:NJSRR(at)aol.com).

**Wanted: Locks** - fancy cast back railroad switch locks. Warren Nyerges: email [warrennyergesjr@hotmail.com](mailto:warrennyergesjr@hotmail.com) or visit [www.antiquerailroadlock.com](http://www.antiquerailroadlock.com).

## Locomotive & Rolling Stock Hardware

**Builder's Plates for Sale.** Original steam, diesel & electric builder's & number plates. Contact us for a current list of plates. Ron Muldowney: [rjmuldowney@comcast.net](mailto:rjmuldowney@comcast.net).

## Railroadiana Dealers

**Times Treasures** Railroad & Country Collectibles on Ruby Lane. All types of railroadiana, with new items added on a regular basis. <http://www.rubylane.com/shop/timestreasures>

## Timetables & Paper

**Wanted:** Interested in buying railroad paper collections, especially pre-1950 public and employee timetables, passes, name train and travel brochures and dining car menus. No collection too small or large to be of interest. Willing to travel to purchase and pick-up. 45 years in the railroadiana collecting hobby and strict confidence assured. Please contact Doug McIntyre at [dm021949@aol.com](mailto:dm021949@aol.com).

**Wanted:** Delaware & Hudson RR Employee Timetable #3 dated April 28, 1940. Also, anything related to Wayland, MA, on the Boston & Maine and Central Mass Railroad. Contact Rick Conard at [RRConard@earthlink.net](mailto:RRConard@earthlink.net)

## Trolleys & Transit

**Wanted: Photos of Syracuse, NY** trolley car #1024 & trolley cars around Syracuse University & Archbold Stadium. Dave Hamilton: [transportsim@aol.com](mailto:transportsim@aol.com).

*Want Ads Are Back!*

*Free for KL&L  
Members!*

*Read Submission  
Guidelines & Send to  
the Editor!*

The Bi-Monthly Digital  
**KEY LOCK & LANTERN NEWS**  
Sent by Email Link to 520+ Subscribers  
Visible to 200+ Daily Website Visitors  
Appears in Internet Searches  
Submit your ad to: [transportsim@aol.com](mailto:transportsim@aol.com)



- Aug 16-17** **Van Wert, OH** - Van Wert Railroad Heritage Weekend.  
Info: <https://www.vwrrhw.com/>.
- Aug 23** **Atlanta, GA** - Atlanta Railroad Show. Golden Spike Enterprises  
Info: [www.gserr.com](http://www.gserr.com).
- Aug 23-24** **Austin, TX** - Austin Area Train Show - Austin Model Railway Society  
Info: [www.austinrailway.org](http://www.austinrailway.org).
- Aug 23** **Painesville, OH** - Painesville Depot Railroad Memorabilia Show.  
<http://painesvillerrailroadmuseum.org>.
- Aug 24** **Allenwood, PA** - Central Pennsylvania NRHS Train Show  
Info: <https://www.centralpanrhs.org/>.
- Aug 30** **Colfax, WI** - Colfax Railroad Museum Railroad Show & Sale  
Info: <https://www.colfaxrrmuseum.org/>.
- Sep 4-6** **Scranton, PA** - Nickel Plate Road Historical & Technical Society Convention.  
Info: [www.nkphts.org](http://www.nkphts.org).
- Sep 6** **New London, CT** - New Haven Railroad Historical & Tech Association Reunion.  
Info: [www.nhrhta.org](http://www.nhrhta.org).
- Sep 7** **Batavia, NY** - Great Batavia Train Show - Genesee Society of Model Engineers  
Info: [www.gsme.org](http://www.gsme.org).
- Sep 10-13** **St. Paul, MN** - Great Northern Railroad Historical Society Convention.  
Info: [www.gnrhs.org](http://www.gnrhs.org).
- Sep 12-13** **Indianapolis, IN** - North American Transit Historical Society Hoosier Traction Meet.  
Info: [www.hoosiertractionmeet.com](http://www.hoosiertractionmeet.com).
- Sep 12-14** **Stafford, CT** - Central Vermont Railway Historical Society Convention  
Info: [www.cvrhs.com](http://www.cvrhs.com).
- Sep 13** **Bradford, OH** - Bradford Ohio Railroad Heritage Days.  
Info: [www.bradfordrrmuseum.org](http://www.bradfordrrmuseum.org).
- Sep 13-14** **Colfax, CA** - Colfax California Annual Railroad Days  
Info: <https://colfaxrailroaddays.com/>.
- Sep 13** **Perris, CA** - Fall Swap Meet. Southern California Railway Museum.  
Info: <https://socalrailway.org/>.
- Sep 17-20** **Rock Island, IL** - Union Pacific Historical Society Convention.  
Info: <http://uphs.org>.

## Send listings to: [transportsim@aol.com](mailto:transportsim@aol.com)

There is no charge for calendar listings. Train shows must include dealers of authentic railroad memorabilia or related material, and auctions must include at least 20 lots of railroadiana. Other events must be directly related to railroad history (special exhibitions, lecture programs, conventions, limited excursions, etc.). Regular monthly group meetings, model train meets & scheduled tourist train trips are not eligible, unless related to a special event. Events are listed space permitting, at the editor's discretion. Listings are subject to error or change. Always check show web sites before traveling.

## Visit [www.klnl.org](http://www.klnl.org) for More Listings

# Key Lock & Lantern News & Information

## Key Lock & Lantern Email List

If you are not already receiving the link to this newsletter directly from KL&L, go to the "Contact KL&L" page on the Key Lock & Lantern website at [www.klnl.org](http://www.klnl.org) and sign up for our email list. You will receive links to the *KL&L News* when it is published and occasional notifications of events of interest to members. The email list is hosted by MailChimp, which makes it easy to unsubscribe at any time, and KL&L never sells or shares its email list with outside parties. Don't miss important news and announcements - sign up today!

## KL&L Facebook Page

For current news and announcements, visit the Key Lock & Lantern page on Facebook at <https://www.facebook.com/railroadiana>. Up to date information about the Key Lock & Lantern Convention, newsletter & magazine publication, and upcoming shows and auctions is posted on the page. There are also hundreds of photos of modern & historical railroad operations, railroad & transportation memorabilia, and views of recent shows and events. Be sure to "follow" the page, so that posts show up in your news feed.

## KL&L YouTube Channel

The Key Lock & Lantern YouTube channel showcases videos of modern and historical railroad operations, steam train excursions, and KL&L Convention highlights. Visit the channel at <https://www.youtube.com/user/KeyLockLantern>. Be sure to hit the subscribe button and leave comments on the videos that you enjoyed!

## Want Ads for KL&L Members

As noted in previous issues, the "Want Ad" section of the *KL&L News* is undergoing an update to remove outdated notices. If you would like to submit an ad for inclusion in future issues, contact KL&L editor Dave Hamilton at [transportsim@aol.com](mailto:transportsim@aol.com). Basic want ads are free for current Key Lock & Lantern members.

## Member Address Changes & Corrections

The *Key Lock & Lantern* magazine is sent via First Class Mail and is therefore forwarded by the U.S. Postal Service for the designated period following an address change. However, due to the frequency of publication of the magazine, the time for forwarding may expire in between issues, and your magazine may be returned to KL&L. Please make sure that Key Lock & Lantern is on your list of organizations to notify in the event of a change of address. Also, please check your mailing label when receiving your copy of the magazine, and advise KL&L if any corrections are needed. Contact Marie Brainard at [j944wb@aol.com](mailto:j944wb@aol.com) if changes are required.



For News & Information, Visit the KL&L Page on Facebook. Use the link at [www.klnl.org](http://www.klnl.org).

# KEY LOCK & LANTERN

Can Help Promote Your  
**Auction, Show or Event**

With Advertising in KL&L Publications

**2800+ Facebook Followers**

**200+ Daily Website Visits**

**520+ Newsletter Subscribers**

Contact KL&L Editor Dave Hamilton at  
[transportsim@aol.com](mailto:transportsim@aol.com)



**All submissions for the KL&L magazine,  
news items for the digital KL&L News  
& general inquiries should be sent to:**

KL&L President & Editor  
David Hamilton  
E-mail: [transportsim@aol.com](mailto:transportsim@aol.com)

**Send membership applications, dues  
payments, and address changes to:**

KL&L Chairman John Brainard &  
VP-Membership Marie Brainard  
E-mail: [j944wb@aol.com](mailto:j944wb@aol.com)

Join or Renew Your  
**KEY LOCK & LANTERN**  
Membership Online at  
[www.klnl.org](http://www.klnl.org)

## KL&L Membership Form (2025 Membership Year)

Please make check or money order payable to Key, Lock & Lantern, Inc. and forward to:  
Marie Brainard, KL&L Membership, 35 Nordhoff Place, Englewood, NJ 07631-4810

Name\_\_\_\_\_

Representing (business or museum, if applicable)\_\_\_\_\_

Address\_\_\_\_\_

City\_\_\_\_\_ State/Prov\_\_\_\_\_ Zip/Mail Code\_\_\_\_\_

Phone\_\_\_\_\_ E-mail\_\_\_\_\_

Basic membership at \$40 per year (1st Class mailing in USA) or \$60 per year (non-USA).....\$\_\_\_\_\_

Additional Donation.....\$\_\_\_\_\_

Enclosed is my check / money order payable to Key Lock & Lantern, Inc. for.....\$\_\_\_\_\_

Membership in KL&L includes 4 issues of the printed magazine, special member rates for KL&L Convention registration, and access to "members only" content on the KL&L website. New members joining before September will receive all previously published magazines for the year, and will be due for renewal in the following January. New members joining in September or later will have their dues applied to the next membership period, beginning with the Jan/Feb/Mar issue, unless otherwise requested.