



KEY LOCK & LANTERN NEWS



Mar/Apr 2026

Issue No.91

The Bi-Monthly Digital Supplement to the Key Lock & Lantern Journal

All Aboard for the KL&L Convention!



**Union Pacific Big Boy
Schedule Announced**

**50th Anniversary of
the Start of Conrail**

**Railroad Museum &
Preservation News**



KEY LOCK & LANTERN NEWS



The Bi-Monthly Digital Supplement to Key Lock & Lantern Magazine
WWW.KLNL.ORG

March/April 2026 **Issue #91**

Railroad Event Calendar.....	3
From the President’s Desk.....	3
KL&L Transportation History Expo.....	8
2026 KL&L Convention Excursion.....	10
KL&L Convention Activities.....	12
Conrail Programs at the 2026 KL&L Convention.....	14
2026 KL&L Convention Schedule.....	16
Carbondale Historical Society.....	18
New York Central Convention.....	19
Union Pacific Big Boy Schedule.....	20
Big Boy Reunion at Steamtown.....	22
KL&L News & Information.....	25
KL&L Convention Flyer.....	27

KL&L News Editor.....David Hamilton

Send News to transportsim@aol.com

The Key, Lock & Lantern News is published bi-monthly as a digital supplement to the quarterly Key, Lock & Lantern magazine. Recipients may repost or forward complete and unmodified copies of this newsletter to other hobbyists and websites, but its content may not otherwise be copied or distributed without the permission of the KL&L Board of Trustees. Copyrights are held by the respective authors and photographers. Excerpts of news items may be published with the credit line “Key, Lock & Lantern News.” Descriptions, photos, and prices in auction reports and ads are supplied by the auction companies and do not represent an evaluation or endorsement of value or authenticity by Key, Lock & Lantern.

Annual membership dues for Key, Lock & Lantern are \$40 for residents of the USA, and \$60 for outside of the USA (by money order or electronic payment in US funds). Members receive four issues of the quarterly KL&L magazine, delivered via first class mail. Applications for membership & address changes should be forwarded to the VP-Membership at the e-mail address listed at right. Online membership forms and dues payment via Paypal are available at www.klnl.org.

Contributions of articles, photos, and news may be forwarded to the editor at the e-mail address listed at right. The submission of material in digital format is preferred, with text files in DOC, TXT, or PDF format, and images in JPG, TIF, BMP or GIF format. Digital files may be sent by e-mail or on a computer CD or flash drive. Please contact the editor regarding optimum file sizes and formats, or for the submission of hard copy material.

By submitting material to Key, Lock & Lantern, the contributor grants permission for use in any edition of the KL&L magazine, digital newsletter, websites, and other publications. All material will be retained by KL&L for future use, unless the contributor specifically requests that it be returned, and includes a suitable, self-addressed, stamped envelope. Current deadlines are listed in the Key, Lock & Lantern Advertising Guide, which is available on the KL&L website at www.klnl.org, or by contacting the editor.

Key, Lock & Lantern

A non-profit membership corporation dedicated to the preservation of transportation history and railroad memorabilia

The mission of Key, Lock & Lantern is to gather and publish information on the history of the transportation industry, and to support the preservation of railroad artifacts. KL&L members have an interest in all aspects of railroad & transportation history, from research and preservation projects to the conservation and restoration of all types of historical memorabilia. Originally formed in 1966, Key, Lock & Lantern, Inc. was officially incorporated in 1988 as a non-profit, educational, membership corporation in the State of New Jersey, under the provisions of Section 501(c)(3) of the United States Internal Revenue Code. Membership is open to anyone with an interest in transportation history and in achieving the goals of the organization.

Officers & Trustees

Chairman of the Board

John Brainard
j944wb@aol.com

President & Editor

David Hamilton
transportsim@aol.com

VP- Membership / Treasurer

Marie Brainard
j944wb@aol.com

Secretary

Jeremy Tuke

Chaplain / Sgt at Arms

Chip Greiner

Historian

Peter Gores

Trustees at Large

Lyman Gray, Joel Shaw, Leonard Gordy, Bob Lipman, Randy Bushart, William Sternitzke, Bill Roberts, Bob Myers, Joey Senese, Matthew Bushart, Michael Decker

www.klnl.org



For Current News
“Like” KL&L on

facebook

From the President's Desk.....



It is that time of the year again! As I am writing this, the Key Lock & Lantern Convention is only about two weeks away. We have a great train ride scheduled for Friday, more than sixty tables reserved for displays and memorabilia for sale, and some great presenters lined up for the Saturday night dinner. This year's event is on track to be even better than last year!

While the convention has always revolved around the show, with plenty of railroading to buy and exhibits to see, it is the additional events that make it unique. From the legendary "parking lot deals" and Friday night "room hopping," to the railroad stories told at the bar, it is the social aspect of the convention that keeps us coming back each year. Despite the fact that online auctions and social media have made shows and meetings somewhat less essential for collectors and historians, the KL&L Convention continues to grow.

This year, we have almost 100 people registered in advance for the weekend, with many more expected to register at the door on Saturday for the show. Many exhibitors don't sell at regular train shows or online, and this is the one time of the year that they thin out their collections. It is also the only opportunity to see some scarce memorabilia from private collections that only comes out for this event.

I still remember the first KL&L Convention that I attended. I didn't have anything really remarkable to display, nothing to sell, and not enough money to buy the top shelf lanterns that were offered (many were "trade only" anyway). I did manage to buy a few timetables, which had to be purchased in John Brainard's room on Friday night, because Saturday was still "hardware only" at the time. Nevertheless, I still had a great time, meeting other collectors, railroaders, and history buffs, staying up until 3am visiting with new friends.

The convention is bigger these days, with timetables & paper now included, and non-members welcome, but it still has that same atmosphere that makes it such an enjoyable event. There is still time to get onboard, by registering online at www.klnl.org, or just show up on Saturday for the show. I hope to see you there!

Dave Hamilton
KL&L President & Editor

Railroad Event Calendar



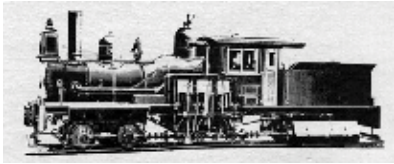
Upcoming historical society conventions, special events, railroading shows & auctions. Listings subject to change. Check show web sites before traveling and visit www.klnl.org for updates. See submission guidelines at the end of the calendar.

Look for Advertisements in this Issue & on the Key Lock & Lantern Website for [Events Shown in Blue](http://www.klnl.org)

- Apr 30-May 1 Lafayette, IN** - Rail & Road Auctions - Railroading Auction
Info: www.BIDRAR.com.
- May 7-10 Carbondale, PA** - Key, Lock & Lantern Annual Convention.
Info: www.klnl.org.
- May 9-10 Portland, OR** - National Train Day at Oregon Rail Heritage Center.
Info: <https://orhf.org/>.
- May 14-17 Durand, MI** - Durand Railroad Days - Various Events Around Town.
Info: www.durandrailroaddays.com.
- May 14-16 Gettysburg, PA** - Pennsylvania Railroad Tech & Historical Society Meeting.
Info: www.prrths.org.
- May 15-17 Kalamazoo, MI** - New York Central Historical Society Convention.
Info: <http://nycshs.org>.
- May 16 Newark, OH** - Baltimore & Ohio Railroad Historical Society Mini-Convention.
Info: www.borhs.org.
- May 16-17 Spencer, NC** - North Carolina Transportation Museum Spencer Shops Train Show.
Info: www.nctrans.org.

Continued on Page 25

Front Cover: Delaware & Hudson lightning stripe locomotive #4068 is lined up for the 2026 KL&L excursion. Photo by Bill Moll.



Railroad Memories

Offering Quality Railroadiana Since 1987

Now Accepting Consignments for Upcoming Sales



RARE Santa Fe
Illuminated panel



STL&ATHRR
tapered key



Rare Badges



Beautiful D&RGRR
BT/BB Lantern



D&IRRR
Tapered Key



Santa Fe
Mother Earth Kachina



Builders Plates



Brass lanterns



Presentation Lanterns



Santa Fe Crews
Quarter Clock



Santa Fe
Kachina Plaque



SP Mission Service Plate



V&M RR
Tapered key



W&STPRR
Tapered key



Rare Santa Fe
Badges



More Locks from
the Kidd Museum



Passes Including Colorado



Columbine China

P.O. Box 415

Georgetown, Colorado 80444

Phone: 303-569-5185

Email: railroadmemories@gmail.com Website: www.railroadmemories.com

Railroadiana Auctions - Spring & Fall - Brookline, NH

Railroadiana Consignment Auctions Held Each Spring & Fall

Brookline Auction Gallery LLC - 32 Proctor Hill Rd, Brookline, NH 03033

www.brooklineauctiongallery.com

Scott Czaja - Sales Manager

Next Sale: May 22, 2026

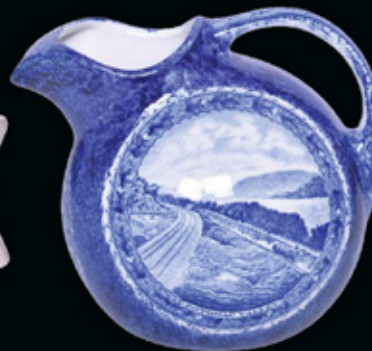


New in-house online bidding platform - We also accept absentee bids via: e-mail & mail
Quality consignments are welcome for future sales - email Scott: sczaja@hotmail.com

RAIL & ROAD AUCTIONS

Now Accepting Consignments for
2026 Railroad & Transportation Auctions

Next Auction - April 30th & May 1, 2026



View the catalogs on our website & register to bid.
Rail & Road offers online, absentee, and telephone bidding.



RAIL & ROAD AUCTIONS
WWW.BIDRAR.COM

765-412-7926



JM HOBBY SUPPLY & RAILROAD ARTIFACTS

Railroadiana Auctions

In Conjunction with Ihander Auctioneering

Next Auction: July 25 & 26, 2026

Locomotive Horns & Lights, Paper, Lanterns, Trolley Roll Signs, Lamps, Parts, & HO, HOOn3, O, & On3 Model Trains

We Will be Accepting Consignments for Upcoming Sales at the Key Lock & Lantern Convention in Carbondale, PA on May 8th & May 9th - Contact Us for Details



Wanted to Buy - Artifacts from Iron Ore Railroads & Related Lines - Bring Your Midwestern Memorabilia to the Key Lock & Lantern Convention!



WE OFFER THE LOWEST SELLERS COMMISSIONS AND BUYERS FEES IN THE U.S.A!

SHIPPING IS AT ACTUAL COST....NOT INFLATED!

Call us today to discuss selling your collection at 920-857-9670!

PO Box 25, Luxemburg, WI 54217

Email us at jmhobbysupplyandrrartifacts@gmail.com

Visit our website at www.jmhobbysupply.com

KL&L Railroadiana Show to Fill the Hotel Anthracite with Exhibits & Vendors



On Saturday, May 9th, the 6000 square foot Gravity Hall banquet room at the Hotel Anthracite in Carbondale, PA will once again be filled with museum-quality exhibits and over fifty tables of transportation memorabilia for sale. The Transportation History Exposition is the “main event” of the Key Lock & Lantern Convention, providing members with a venue to showcase interesting artifacts from their collections and the results of their research.

KL&L members competing for the “Best in Show” award have presented a variety of exhibits in recent years, with topics ranging from lantern manufacturers to local railroad history. Some of the displays at recent shows included: the Nail City Lantern Company, Delaware Lackawanna & Western Railroad memorabilia, early Amtrak timetables,

passes from New York & Pennsylvania railroads of the 1850-1890 period, railroad uniform badges, and an original CTC machine panel from the New York Central Railroad. The Erie Railroad, the Northern Central Railroad, the Delaware & Hudson Canal Company, the Chicago & Alton Railroad, Taylor Manufacturing Company, street & post lamps, railroad police badges, and lantern patent models have been featured in recent years.



In addition to the displays, most exhibitors also offer authentic memorabilia for sale or trade. A collector will find every type of railroadiana at the show, from hardware to paper and everything in between. A nice selection of lanterns (including non-railroad models) is usually offered by several collectors, along with globes, founts, and other parts.



Continued on Page 9

2026 KL&L Transportation History Expo

Continued from Page 8

Several exhibitors are experts at lantern restoration, and are always happy to give advice, or to offer their repair services. Lock and key collectors will find plenty of scarce examples for their collections, and can exchange “want lists” with others who are looking for similar artifacts.

A growing number of timetable and paper collectors have been participating in the show in recent years, with several members of the National Association of Timetable Collectors scheduled to exhibit this year. From rare 19th century employee timetables to modern public timetables in the “dollar bin,” there is something available to fit every ephemera collector’s budget. A variety of used books on transportation and industrial history subjects are also usually offered for sale by various exhibitors.



Several historical societies are also expected to have tables at the show, offering books and memorabilia for sale, and providing information about their group’s activities. The KL&L Convention is an excellent event for networking with fellow historians, and members of these groups are looking forward to meeting collectors with similar interests.

The KL&L fundraiser sale will take place in the afternoon, with several tables of donated memorabilia to be sold to the highest bidder. All proceeds from this event are used to keep registration fees at a reasonable level, with the convention operating on a break-even basis every year as a result.



There is always some interesting (and sometimes scarce) memorabilia to buy, and it is a great opportunity to pass along something that is no longer needed in a collection, while supporting a good cause.

The annual membership meeting of Key Lock & Lantern will be held at 1:30pm on Saturday afternoon, in the exhibit hall. The “Best in Show” award will also be presented to the member whose display receives the most votes from show attendees.

Setup for the Transportation History Exposition begins at 7:30am, with doors to the Gravity Hall opening at 9:00am. All interested collectors and transportation history buffs



are invited to attend, with a \$10 registration fee per person collected at the door. Early admission passes are available for \$20 per person (in addition to the registration fee), which allows entry to the exhibit hall during setup.

Several new exhibitors are registered to attend this year, along with members who don’t do shows and are thinning collections, and the regulars with their usual selection of rare artifacts. Don’t miss out - make plans to attend today!

Coach Tickets Still Available for the Key Lock & Lantern Convention Excursion Over the Former D&H Penn Division Mainline

The KL&L Convention excursion train will return to the former Delaware & Hudson Railroad Penn Division this year, departing from the Carbondale platform, conveniently located two blocks from the Hotel Anthracite. The route will be similar to that of our 2022 excursion, heading south to the South Side Plaza in Scranton, with several photo stops along the way.

Boarding is planned for 9:15am, with a 9:30am departure on Friday, May 8th. Arrival back in Carbondale depends on the length of stops and freight traffic, but is expected to be no later than 4:00pm.



It is planned to have the Delaware-Lackawanna Railroad's repainted D&H lightning stripe RS3 and CNJ RS3 as power for the train, subject to mechanical availability. Once again, the railroad will be providing its inspection train for the excursion, consisting of a former EL comet coach, a DL&W shop-built caboose, the Pullman City of Lima sleeper, and Erie Lackawanna #2 business car. The passenger equipment is heated and air conditioned, and the caboose has a stove if needed. There are restrooms in both the caboose and the passenger cars.



Photo stops are planned at the Delaware-Lackawanna Von Storch Shop, and beneath the DL&W Bridge 60 at Scranton. Other historic equipment is expected to be posed as part of the photo sessions. There are several fast food options for lunch during a one hour layover at the South Side Plaza.

Coach tickets in the Comet car are still available for \$50 to KL&L members as part of the convention registration, or \$60 for non-members. Tickets may be purchased online at www.klnl.org, and if any seats are still open on the day of the excursion, for exact change on the platform.

There is a waiting list for seats in the sold out EL #2, the City of Lima, and the DL&W caboose. If seats open up in any of those cars, coach ticket holders on the waiting list will be contacted to upgrade first, followed by non-ticket holders. Contact Dave Hamilton at transportsim@aol.com to be added to the list.

Continued on Page 17



All registered train riders will be contacted by email during the week prior to the convention with final details of the train schedule, stops, and lunch options. Updates will also be posted on the KL&L page on Facebook. This trip offers mileage that isn't covered by regular excursions to Carbondale, and the opportunity to ride in equipment and tour facilities that aren't open to the public. Reserve your tickets today to avoid disappointment!



From Room Hopping to Slide Programs: The KL&L Convention is More than Just a Show

When Forbes Hauptman and Irwin Lloyd organized the first KL&L meet in Albany, NY in the early 1970's, it was initially planned simply as a railroading show where members could trade memorabilia. However, before it even began, it was obvious that the event was going to be a social gathering, as participants started arriving at the motel on Friday evening before the show. Soon, "room hopping" as it was known, became an integral part of the weekend, as members wandered from room to room to visit and get a head start on making deals.

Awards for the best railroading displays, auctions, and dinners were added to the list of activities within the first few years, and the KL&L Convention was born. Although the size of the show has tripled in recent years, and events such as train excursions and lectures have been added to the program, that spirit of camaraderie among historians and collectors is still at the heart of the convention.



After the Friday excursion, many participants meet for dinner in the Hotel Anthracite's Kol Steakhouse or one of the nearby restaurants in downtown Carbondale. After dinner, most exhibitors unload their cars and bring memorabilia to their rooms to get ready for the show. Traditional room hopping (which hasn't been practical in the facilities that KL&L has used since Albany) has been replaced by bringing memorabilia to the lounge or courtyard. Those late night bull sessions that took place in the old days are still a part of the convention!

Continued on Page 13



With the addition of the Friday train ride, many members arrive on Thursday night, and the Hotel Anthracite bar and canary lounge (and courtyard) are usually filled with convention goers. While some unloading takes place, most people focus on getting settled in, catching up with old friends, and making new ones. There are plenty of railroad stories to be told, and discussions of railroad preservation and collecting.

KEY LOCK & LANTERN

**Can Help Promote Your
Auction, Show or Event**
Contact KL&L at transportsim@aol.com



2026 KL&L Convention Activities

Continued from Page 12

During the final years that the convention was held in Albany, the motel restaurant had closed, leaving a gap in the Saturday schedule. As an alternative, a few members started ordering pizzas and watching slides and movies after the show ended. When the convention moved to hotels that had open restaurants, the dinners resumed, and the slide shows became part of the formal Saturday evening schedule.

The Hotel Anthracite offers a complimentary breakfast, so Sunday morning offers one more chance to get together with friends before heading out to visit local historic sites, chase trains, or return home for Mother's Day. Steamtown, the Electric City Trolley Museum, Lackawanna Coal Mine, Stourbridge Line, and Reading & Northern Railroad are located within a short drive from Carbondale.



Hopefully, by the end of the weekend, everyone will have found something new for their collections, sold a few things that they no longer wanted, and made some contacts with people who have similar interests. More than just a show, the Key Lock & Lantern Convention is about sharing your interest in this fascinating hobby!



KEY LOCK & LANTERN

Can Help Promote Your
Auction, Show or Event

Contact KL&L at transportsim@aol.com

KL&L Programs Recognize the 50th Anniversary of the Creation of Conrail



April 1st, 1976 was a significant date in railroad history, as the Consolidated Rail Corporation, better known as Conrail, took over the operations of six bankrupt railroads in the northeast. For many railroaders, it was a sad day that saw many lines and facilities downgraded or closed, while others celebrated the start of the revitalization of rail service in the region. Most of the railroads that turned over their tracks and equipment to the government-owned company would likely not have survived for much longer, and Conrail was the only hope for keeping trains running.

Fifty years later, the creation of Conrail can be viewed as a success, as key parts of its component railroads were retained, rolling stock fleets were modernized, and lost business was regained. The company eventually began turning a profit, and the government was able to return it to the private sector in a major stock offering. The railroad was attractive enough that

it garnered the attention of neighboring CSX and Norfolk Southern, which purchased and split Conrail in 1999. Today, the Conrail name survives as a local service carrier in the territory that is held jointly by CSX and NS.

In recognition of the 50th anniversary of the creation of Conrail, several presentations at the Key Lock & Lantern evening programs on Saturday, May 9th, will focus on the history of "Big Blue." Rudy Garbely, author and director of the Conrail Historical Society, will give a presentation entitled "Conrail: Railroad's Successful Experiment," providing an overview of the company.



Noted photographer and retired locomotive engineer Devan Lawton will present the results of his efforts to capture the final days of Conrail in western New York on film. Bill Moll, retired Conrail & CSX dispatcher, will give a program on "The Evolution of the Selkirk Dispatching Office."

Continued on Page 15





The presentations will begin at approximately 6:30pm, in the Hotel Anthracite Gravity Hall banquet room, following the annual KL&L dinner. All convention registrants are invited to attend, including those who registered at the door for the show, and attending the dinner itself is not required. The dinner is always an enjoyable event, though, with good stories shared by current and former railroaders, so it is certainly worth attending. Registration is only open for a few more days at www.klnl.org, so don't wait!



KEY LOCK & LANTERN
Can Help Promote Your
Auction, Show or Event
Contact KL&L at transportsim@aol.com

2026 Key Lock & Lantern Convention Schedule



A variety of activities are planned for the 2026 Key Lock & Lantern Convention, with plenty of unscheduled time to allow for visiting with fellow history buffs & collectors, and for making those “parking lot deals” that the convention is known for. There are also many other attractions of interest in the area, along with modern railroad action for train chasers. The following schedule of events outlines the activities that

are planned. The schedule is subject to last minute change, if an unforeseen event occurs, so if your email and/or cell phone number has changed since you registered, please contact Marie by email at j944wb@aol.com. Registration for the show is available at the door, but some other events are closed and some are sold out, so please contact KL&L first or register online at www.klnl.org.

Thursday, May 7

- 9:00am-5:00pm Open schedule for those wishing to visit Steamtown, the Carbondale Historical Museum, Electric City Trolley Museum, and other local historic sites.
- 5:00pm-8:00pm Dinner on your own (many KL&L members meet in the hotel restaurant).
- 8:00pm-11:00pm Informal social hour at the Hotel Anthracite lounge & early memorabilia trading.

Friday, May 8

- 7:00am-10:00am Continental breakfast for guests at the Hotel Anthracite.
- 9:15am Check-in & boarding for KL&L excursion train at Carbondale Platform. KL&L volunteers will check in passengers and issue name badges.
- 9:30am KL&L excursion train on the Delaware-Lackawanna Railroad from Carbondale to Scranton, with a one hour layover for lunch.
- 1:30pm KL&L excursion train departs from South Scranton.
- 4:00-5:00pm Approximate arrival time of KL&L excursion train back in Carbondale.
- 5:00pm-7:00pm Dinner on your own (many KL&L members meet in the hotel restaurant).

Continued on Page 17

Friday, May 8 (continued)

- 8:00pm-11:00pm Room hopping & informal social hour at the Hotel Anthracite bar & lounge.
11:00pm Room hopping ends. For the comfort of those going to bed early, any late get-togethers should be held in the hotel bar and/or lounge.

Saturday, May 9

- 6:30am-10:00am Continental breakfast for guests at the Hotel Anthracite.
7:30am Convention check-in opens at the Hotel Anthracite banquet room. Table-holders and anyone who registered for early admission may enter the show room for setup.
9:00am The Transportation History Exposition opens in the Hotel Anthracite banquet room for those who did not register for a table or early admission. Anyone who did not register in advance is welcome to register at the door for a \$10 fee.
12:00pm Box lunches will be available for pickup by those who ordered them in advance. The restaurant in the hotel will NOT be open for lunch, but there is a Dunkin Donuts and a pizza shop located right across the street.
1:15pm Please have votes for the “Best in Show” award turned in to the registration desk.
1:30pm Annual membership meeting of Key Lock & Lantern at the Hotel Anthracite banquet room. The presentation of the “Best in Show” award will take place during the meeting. After the meeting, any last-minute donations to the fundraiser sale may be placed on the auction table.
1:45pm Annual Key Lock & Lantern fundraiser sale. Donated memorabilia will be sold in an auction style sale, with all proceeds going to support the activities of KL&L.
3:00pm Transportation History Exposition exhibits close - exhibitors may take down their displays.
4:00pm Pre-dinner social hour in the banquet room.
5:00pm Key Lock & Lantern Annual Banquet in the Hotel Anthracite banquet room for those who registered in advance.
6:30pm Transportation history program, following dinner in the Hotel Anthracite banquet room. Anyone who registered (either in advance or at the door) for the Transportation History Expo is welcome to attend.
10:00pm Bull sessions, late memorabilia trading, sharing photos, etc. by KL&L members continue in the Canary Lounge & social hour in the bar.

Sunday, May 10

- 7:00am-10:00am Continental breakfast for guests at the Hotel Anthracite.
9:00am-7:00pm Open schedule for those wishing to visit Steamtown, the Electric City Trolley Museum, and other local historic sites.



Carbondale Historical Society Museum Preserves Fascinating History of Region

It is not merely by chance that the Key Lock & Lantern Convention has returned to Carbondale, PA for the past several years - the region is filled with numerous reminders of its fascinating transportation and industrial history. Located on the third floor of City Hall, the Carbondale Historical Society and Museum houses a collection of artifacts related to the industries that led to the growth of the city. For visitors who are exploring historic sites in the area, it is worth making a stop at the museum.

Memorabilia from the region's railroads and coal mines is on display, along with artifacts from businesses in the local community where many of the workers lived. In addition to the exhibits, the Historical Society also maintains a research room in the museum, for those studying the history of the region, its industries, and local genealogy.

City Hall is located at One North Main Street in downtown Carbondale. The museum's hours are generally from noon to 5:00PM, Monday through Friday, but it is highly recommended that visitors call ahead to confirm that it will be open. Call 570-282-0385 or email the historical society at carbondalehistorical@gmail.com for more information, to confirm hours, or make an appointment. The society also maintains a website at <https://carbondalepahistorical.org>.



A variety of railroad memorabilia is on display at the Carbondale Historical Society Museum. CHSM photo.



The Carbondale Historical Society Museum exhibits explore the area's transportation history. CHSM photo.



Other displays include artifacts from local businesses and the surrounding community. CHSM photo.

New York Central System Historical Society Convention Heads to Kalamazoo

The 2026 New York Central System Historical Society convention will be held from May 15th through 17th at the Delta Hotel & Conference Center in Kalamazoo, MI. A variety of activities are planned, including presentations, tours of local model railroad layouts, and an excursion on the Indiana Northeastern Railroad's former NYC trackage.

A model train and railroad memorabilia show and sale will be held at the Delta Hotel on Sunday, May 17th. At past conventions, there has been a nice selection of railroadiana offered by NYCSHS members at the show. The society's Collinwood Shop store will be set up, with books, models and convention souvenirs.



Membership in the NYCSHS is required for full registration (and is available as part of the package), but tickets for the train ride are available to non-members, along with admission to the train show. For more information about the various convention events, and to register online, visit <https://www.nycshs.org/nycshs-2026-annual>.



KEY LOCK & LANTERN
Can Help Promote Your
Auction, Show or Event
Contact KL&L at transportsim@aol.com

Union Pacific Announces Summer Tour Schedule for Big Boy Locomotive



Union Pacific's famed Big Boy No. 4014, the world's largest operating steam locomotive, will journey to the East Coast for the first time in collaboration with Norfolk Southern as part of a historic coast-to-coast tour as both railroads celebrate America's 250th anniversary. The tour includes a Fourth of July celebration in Philadelphia, major display events in eight cities and more than 50 whistle-stops in 10 states, including stops for the first time in Indiana, Ohio, New York and Pennsylvania.

This will be the first time No. 4014 has ever steamed east of Chicago. As the Big Boy makes this highly anticipated journey, the eastern portion of the tour will operate across the Norfolk Southern network, marking a historic collaboration between two of the nation's storied railroads and bringing the legendary locomotive back to communities that helped power America's industrial rise.

"Union Pacific couldn't be prouder to share this powerful piece of history with the nation and to be a part of America's birthday celebration," said Union Pacific CEO Jim Vena. "This tour celebrates our company's rich 164-year history, our nation's amazing story and the people who have helped build our great country and our railroad."

"Railroads helped build this nation by connecting people, communities and commerce— work carried forward for generations by dedicated railroaders," said Norfolk Southern President and CEO Mark George. "As the United States approaches its 250th anniversary, Union Pacific's Big Boy's return to the East on Norfolk Southern rails reflects a shared legacy."



Continued on Page 21



The Coast-to-Coast tour resumes from Cheyenne, Wyoming, on May 25. Big Boy No. 4014 returned April 24 from the western leg, featuring a ceremony in downtown Sacramento, near the historic Milepost 0 of the Central Pacific, where eastward construction on the nation's first transcontinental railroad began in 1863.

Eight major public display events will be held:

May 30 – Omaha, Nebraska

June 3 – West Chicago, Illinois

June 10 – Buffalo, New York

June 15-16 – Scranton, Pennsylvania

July 4-5 – Philadelphia, Pennsylvania

July 9-10 – Altoona, Pennsylvania

July 14 – Fostoria, Ohio

July 19 – St. Louis, Missouri

In addition to the public display days, rail fans can see this historic machine in action at over four dozen whistle-stops, generally 15- to 30- minutes long. Complete details can be found on UP.com in the official steam schedule.

As part of the tour, the Union Pacific Museum will be selling tickets for rides in vintage passenger cars pulled by Big Boy through the Poconos Mountains in Pennsylvania on June 14. Interested riders can purchase tickets from the Museum at www.UPtrainTix.org/. This will be the ONLY passenger excursion opportunity on this tour.

On the eastern leg of the trip, Big Boy will be accompanied by Norfolk Southern commemorative locomotives as well as several historical passenger cars from Norfolk Southern's Heritage Fleet.

The coast-to-coast tour highlights the histories of Union Pacific in the West and Norfolk Southern and its predecessors in the East, reflecting the shared legacy of American railroads serving as the backbone of the country's economic growth. In the coming weeks, Norfolk Southern will unveil its commemorative U.S. 250 series. *News & Photos courtesy of Union Pacific.*

KEY LOCK & LANTERN

Can Help Promote Your
Auction, Show or Event
Contact KL&L at transportsim@aol.com



Reservations Open for Big Boy Reunion Event at Steamtown NHS in Scranton

Steamtown National Historic Site is honored and thrilled to be hosting a visit from Union Pacific Big Boy No. 4014, the largest operating steam locomotive in the country, as it makes its way from coast to coast to honor America's 250th birthday.

Don't miss this once in a lifetime opportunity to see No. 4014 reunited with Steamtown's own Big Boy No. 4012! It'll be the only place to see two Big Boys lined up side by side and for two weeks in June Steamtown National Historic Site will be the center of the railfan universe!



Steamtown is pleased to partner with Union Pacific to offer two public display days on Monday, June 15 and Tuesday, June 16. Visitors can get up close and personal with both Big Boys, visit the Union Pacific Museum Experience car, and check out two Union Pacific special commemorative diesel engines (No. 1616 and No. 1776) on display in our core complex.

No. 4014 will remain at Steamtown from June 17 through June 30 while Union Pacific completes servicing on the locomotive. Both Big Boys will remain on view during that time, though viewing of No. 4014 may be more distant than the up close opportunity on the public display days.

Steamtown is expecting a huge crowd for this event every day, and an especially massive turnout on the public display days. To accommodate the number of visitors and to get as many people as possible the opportunity to visit, timed reservations will be required for entry to the park. Reservation times will range from 9 a.m. to 3 p.m. daily, and all ticket holders are welcome to visit until the park closes at 5 p.m.

Reservations will be available starting on Wednesday, April 29, at 10 a.m. EDT through www.recreation.gov (though there is no entrance fee for the park, recreation.gov does charge a nonrefundable \$1 service fee for each ticket).

As additional site logistics are confirmed, there may be additional releases of tickets for some entry days and times. For complete information, visit the Steamtown website at <https://www.nps.gov/stea/index.htm>. *News from Steamtown NHS. Above photo by Dave Hamilton, others courtesy UP.*

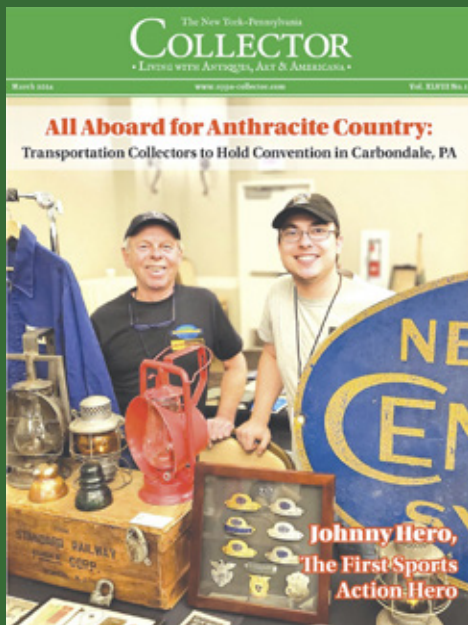


KEY LOCK & LANTERN
Ads Reach Serious Collectors
Contact KL&L at transportsim@aol.com

The New York-Pennsylvania COLLECTOR

Living with Antiques, Art & Americana

A Monthly Publication Featuring News & Articles About Antique Collecting & History



18 - April 2025 - New York-Pennsylvania Collector

Get Onboard with Railroad's Past

Continued from Page 17

it organization dedicated to the preservation of transportation history and memorabilia. There are over 80 issues of the group's newsletters available for viewing and downloading on

Collector

Time Like the Present to Get Onboard with Railroad's Past



The Key Lock & Lantern Convention offers the opportunity to network with other historians and view museum-quality exhibits of memorabilia.



Tickets please! A Pennsylvania Railroad conductor's hat badge provides a reminder of the days of the luxury Broadway Limited train.

Railroadiana collections often feature larger artifacts such as signs and locomotive parts. This Pennsylvania Railroad station sign is from a junction near Buffalo.

houses that specialize in railroadiana, and many dealers at shows have recently added new finds to their stock. Although higher end memorabilia still commands top dollar, many serious collectors are thinning out to make room on the shelf for these new purchases, and common artifacts are now selling for more reasonable prices.

Needless to say, it is important to first acquire some basic knowledge before bidding at an auction or making a deal at a show. There are many railroad-theme decorations, reproductions, and fakes out there, masquerading as genuine artifacts. Experienced collectors properly identify



A piece of memorabilia sought after by collectors of railroadiana, stocks, and autographs: a New York & Hudson RR certificate signed by William Vanderbilt and Cornelius Vanderbilt II.



It didn't take long for convenient transportation by train to create suburbs around major cities, as illustrated by this 1865 Hudson River Railroad commuter ticket.



Streetcar and bus tokens offer an inexpensive way to add memorabilia from this classic form of transportation to a collection.



New York Central & Hudson River Railroad lanterns appeals to both railroad enthusiasts and collectors. Lanterns from Rochester's Herz Headlight Company.

an auction for \$3,600 doesn't mean that the dozens of New York Central Vestas that are currently hanging in antique shops are a bargain for \$150. Of course, the answer to the question of "what is it worth?" is simply whatever makes both the buyer and seller happy. An excellent source of information about railroadiana is the website of Key Lock & Lantern, a non-profit from the Lehigh & Hudson River Railroad recently sold

Continued on Page 16

New York-Pennsylvania Collector - April 2025 - 17



A new generation has added items such as Amtrak timetables to the category of "historical memorabilia." This timetable shows trains on the first day of service



- Auction & Show Listings
- Club Meetings & Events
- Identification & Fakes
- Antique Restoration Tips
- Museums & Historic Sites
- Dealer & Flea Market Ads

Read Current & Past Issues Online at:

www.nypa-collector.com

NYPACollector

CLASSIFIED ADS

Classified ad listings are free for Key Lock & Lantern members. Ad size must fit in four lines, and must include a name and contact email address (the word "at" may be substituted for "@" in the email address, if desired) or website address. A maximum of two ads per person may be run at the same time. Send ads to Dave Hamilton at transportsim@aol.com.

Auctions

Brookline Auction Gallery. Brookline, NH. Railroadiana consignment & estate auctions. Contact sales manager Scott Czaja at sczaja@hotmail.com or visit www.tagtown.net.

JM Hobby Supply & Railroad Artifacts. Luxemburg, WI. Railroadiana consignment & estate auctions. Contact John DeBeck at jmhobbysupplyandrrartifacts@gmail.com or visit www.jmhobbysupply.com.

Railroad Memories. Georgetown, CO. Online consignment & estate auctions. Contact Sue Knous at railroadmemories@gmail.com or visit www.railroadmemories.com.

Rail & Road Auctions. Lafayette, IN. Online railroadiana auctions. Contact Derek Thomas at info@RARauctions.com or visit <https://rarauctions.com>.

Locks & Keys

Wanted: Switch Key from the Baltimore Transit Company (B T Co.) Will pay a good price for a key in decent condition. Dan Allen: [NJSRR\(at\)aol.com](mailto:NJSRR(at)aol.com).

Wanted: Locks - fancy cast back railroad switch locks. Warren Nyerges: email warrennyergesjr@hotmail.com or visit www.antiquerailroadlock.com.

Locomotive & Rolling Stock Hardware

Builder's Plates for Sale. Original steam, diesel & electric builder's & number plates. Contact us for a current list of plates. Ron Muldowney: rjmuldowney@comcast.net.

Railroadiana Dealers

Times Treasures Railroad & Country Collectibles on Ruby Lane. All types of railroadiana, with new items added on a regular basis. <http://www.rubylane.com/shop/timestreasures>

Timetables & Paper

Wanted: Interested in buying railroad paper collections, especially pre-1950 public and employee timetables, passes, name train and travel brochures and dining car menus. No collection too small or large to be of interest. Willing to travel to purchase and pick-up. 45 years in the railroadiana collecting hobby and strict confidence assured. Please contact Doug McIntyre at dm021949@aol.com.

Wanted: Delaware & Hudson RR Employee Timetable #3 dated April 28, 1940. Also, anything related to Wayland, MA, on the Boston & Maine and Central Mass Railroad. Contact Rick Conard at RRConard@earthlink.net

Trolleys & Transit

Wanted: Photos of Syracuse, NY trolley car #1024 & trolley cars around Syracuse University & Archbold Stadium. Dave Hamilton: transportsim@aol.com.

Want Ads Are Back!

Free for KL&L Members!

Read Submission Guidelines & Send to the Editor!

The Bi-Monthly Digital

KEY LOCK & LANTERN NEWS

Sent by Email Link to 520+ Subscribers

Visible to 200+ Daily Website Visitors

Appears in Internet Searches

Submit your ad to: transportsim@aol.com

- May 22 Brookline, NH** - Brookline Auction Gallery
Railroadiana Auction
Info: www.brooklineauctiongallery.com.
- May 23 Chester, MA** - Chester On Track Festival.
Chester Railway Museum.
Info: <https://chesterontrack.com/>.
- May 23 Painesville, OH** - Painesville Railroad
Museum Model Train Day Show.
Info: www.painesvillerrailroadmuseum.org.
- May 28-31 Norfolk, VA** - Society for Industrial
Archeology Annual Conference.
Info: www.sia-web.org.
- Jun 5-7 Phoenix, AZ** - Santa Fe Historical Society
Annual Convention.
Info: www.atsfrr.com.
- Jun 6-7 Montreal, PQ** - Montreal Model Train
Exposition & Collectibles Show
<https://montrealmodeltrainexposition.com>.
- Jun 11-14 Roanoke, VA** - Norfolk & Western Historical
Society Convention
Info: www.nwhs.org.
- Jun 14 St. Charles, IL** - Kane County Railroadiana
Show.
Info: www.rsshows.com.
- Jun 16-20 Harrisburg, PA** - Railway & Locomotive
Historical Society Convention.
Info: <http://www.rlhs.org>.
- Jun 18-21 Madison, WI** - Milwaukee Road Historical
Association Convention..
Info: www.mrha.com/.
- Jun 20 Waupaca, WI** - Annual Strawberry Fest
Railroad Show & other events.
Info: www.wamrltd.com.
- Jun 25-28 Galesburg, IL** - Galesburg Railroad Days -
Various events & train show.
<https://www.galesburgrailroaddays.net/>.
- Jun 27-28 Dayton, OH** - Miami Valley Rail Festival at
Carrillon Park.
Info: www.railfestival.com.
- Jun 27 Painesville, OH** - Painesville Depot Railroad
Memorabilia Show.
<http://painesvillerrailroadmuseum.org>.
- Jul 11 DeLand, FL** - Florida Rail Fair. Golden Spike
Enterprises
Info: www.gserr.com
- Jul 18 Eldersburg, MD** - Baltimore & Ohio Railroad
Historical Society Mini-Convention.
Info: www.borhs.org.

Send listings to: transportsim@aol.com

There is no charge for calendar listings. Train shows must include dealers of authentic railroad memorabilia or related material, and auctions must include at least 20 lots of railroadiana. Other events must be directly related to railroad history (special exhibitions, lecture programs, conventions, limited excursions, etc.). Regular monthly group meetings, model train meets & scheduled tourist train trips are not eligible, unless related to a special event. Events are listed space permitting, at the editor's discretion. Listings are subject to error or change. Always check show web sites before traveling.

Visit www.klnl.org for More Listings

Key Lock & Lantern News & Information

Key Lock & Lantern Email List

If you are not already receiving the link to this newsletter directly from KL&L, go to the "Contact KL&L" page on the Key Lock & Lantern website at www.klnl.org and sign up for our email list. You will receive links to the *KL&L News* when it is published and occasional notifications of events of interest to members. The email list is hosted by MailChimp, which makes it easy to unsubscribe at any time, and KL&L never sells or shares its email list with outside parties. Don't miss important news and announcements - sign up today!

KL&L Facebook Page

For current news and announcements, visit the Key Lock & Lantern page on Facebook at <https://www.facebook.com/railroadiana>. Up to date information about the Key Lock & Lantern Convention, newsletter & magazine publication, and upcoming shows and auctions is posted on the page. There are also hundreds of photos of modern & historical railroad operations, railroad & transportation memorabilia, and views of recent shows and events. Be sure to "follow" the page, so that posts show up in your news feed.

KL&L YouTube Channel

The Key Lock & Lantern YouTube channel showcases videos of modern and historical railroad operations, steam train excursions, and KL&L Convention highlights. Visit the channel at <https://www.youtube.com/user/KeyLockLantern>. Be sure to hit the subscribe button and leave comments on the videos that you enjoyed!

Want Ads for KL&L Members

As noted in previous issues, the "Want Ad" section of the *KL&L News* is undergoing an update to remove outdated notices. If you would like to submit an ad for inclusion in future issues, contact KL&L editor Dave Hamilton at transportsim@aol.com. Basic want ads are free for current Key Lock & Lantern members.

Member Address Changes & Corrections

The *Key Lock & Lantern* magazine is sent via First Class Mail and is therefore forwarded by the U.S. Postal Service for the designated period following an address change. However, due to the frequency of publication of the magazine, the time for forwarding may expire in between issues, and your magazine may be returned to KL&L. Please make sure that Key Lock & Lantern is on your list of organizations to notify in the event of a change of address. Also, please check your mailing label when receiving your copy of the magazine, and advise KL&L if any corrections are needed. Contact Marie Brainard at j944wb@aol.com if changes are required.



For News & Information, Visit the KL&L Page on Facebook. Use the link at www.klnl.org.

KEY LOCK & LANTERN

Can Help Promote Your
Auction, Show or Event

With Advertising in KL&L Publications

2900+ Facebook Followers

200+ Daily Website Visits

520+ Newsletter Subscribers

Contact KL&L Editor Dave Hamilton at
transportsim@aol.com



**All submissions for the KL&L magazine,
news items for the digital KL&L News
& general inquiries should be sent to:**

KL&L President & Editor
David Hamilton
E-mail: transportsim@aol.com

**Send membership applications, dues
payments, and address changes to:**

KL&L Chairman John Brainard &
VP-Membership Marie Brainard
E-mail: j944wb@aol.com

Join or Renew Your
KEY LOCK & LANTERN
Membership Online at
www.klnl.org

KL&L Membership Form (Issues 183-186)

Please make check or money order payable to Key, Lock & Lantern, Inc. and forward to:
Marie Brainard, KL&L Membership, 35 Nordhoff Place, Englewood, NJ 07631-4810

Name _____

Representing (business or museum, if applicable) _____

Address _____

City _____ State/Prov _____ Zip/Mail Code _____

Phone _____ E-mail _____

Basic membership at \$40 per year (1st Class mailing in USA) or \$60 per year (non-USA).....\$ _____

Additional Donation.....\$ _____

Enclosed is my check / money order payable to Key Lock & Lantern, Inc. for.....\$ _____

Membership in KL&L includes 4 issues of the printed magazine, special member rates for KL&L Convention registration, and access to "members only" content on the KL&L website. New members joining before September will receive all previously published magazines for the year, and will be due for renewal in the following January. New members joining in September or later will have their dues applied to the next membership period, beginning with the Jan/Feb/Mar issue, unless otherwise requested.

KEY LOCK & LANTERN

**54th Annual Convention - May 7-10, 2026
Hotel Anthracite - Carbondale, PA**

May 9th Railroadiana Show & Sale
Lanterns, Timetables, Books, Locks, Photographs, Tools, Keys, Ephemera, China, Badges

**Friday May 8th Excursion
Carbondale - Scranton**

**Transportation History Exhibits
Lectures - Slide Shows - Banquet**



WWW.KLNL.ORG

Visit the KL&L Website for Registration Information & Free Newsletters

